

8 SPEED 4WD (Full Electronic Control)

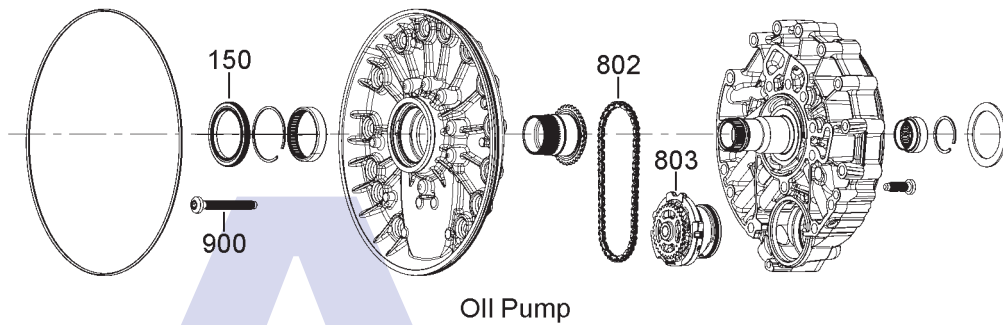


AUTOMATIC CHOICE

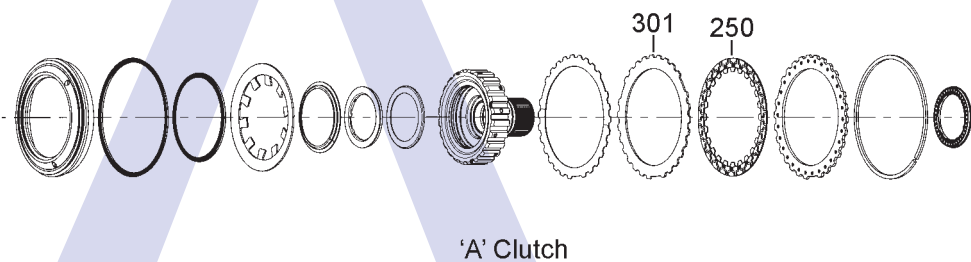


THE AUTOMATIC TRANSMISSION PARTS WAREHOUSE

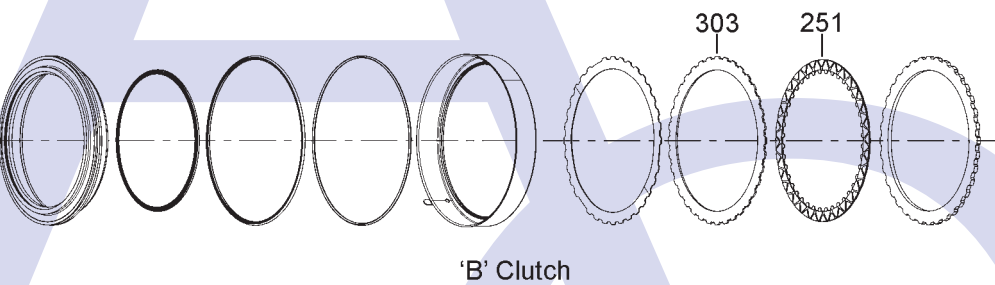
A



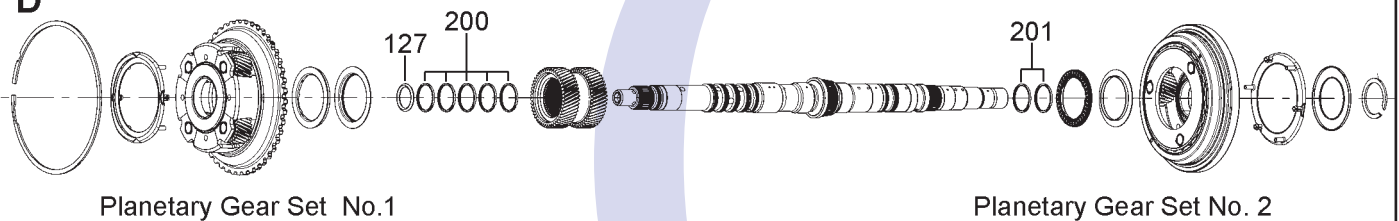
B



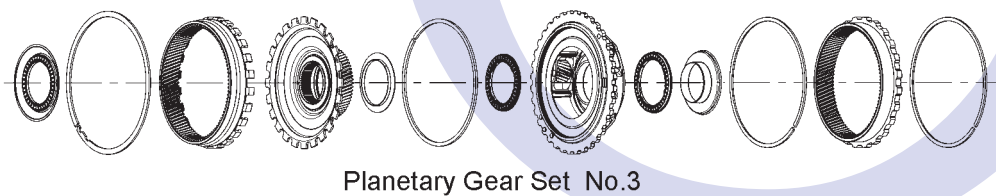
C



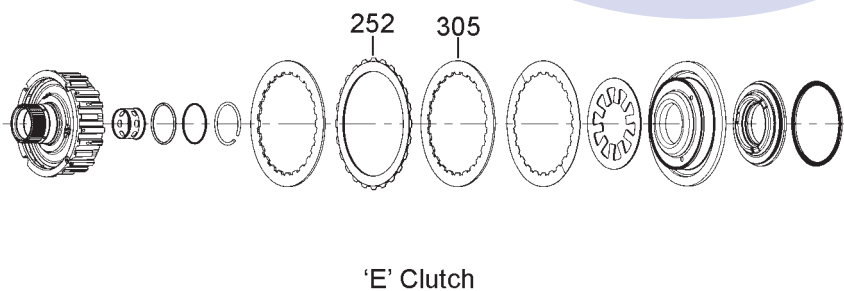
D



E



F



8 SPEED 4WD (Full Electronic Control)

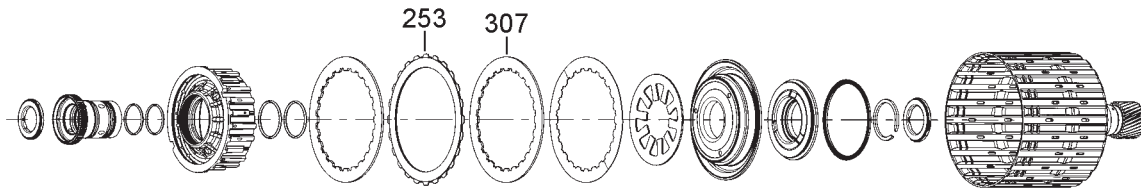


AUTOMATIC CHOICE



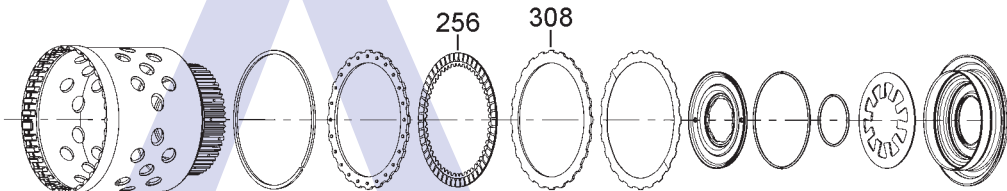
THE AUTOMATIC TRANSMISSION PARTS WAREHOUSE

G



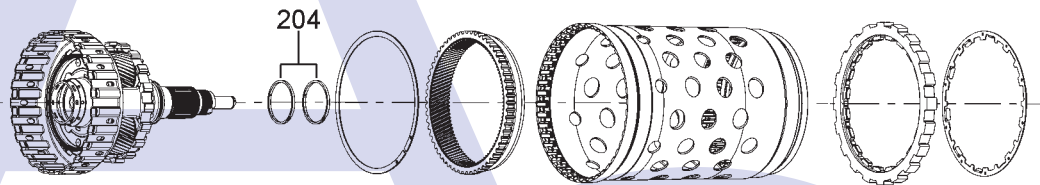
'C' Clutch

H



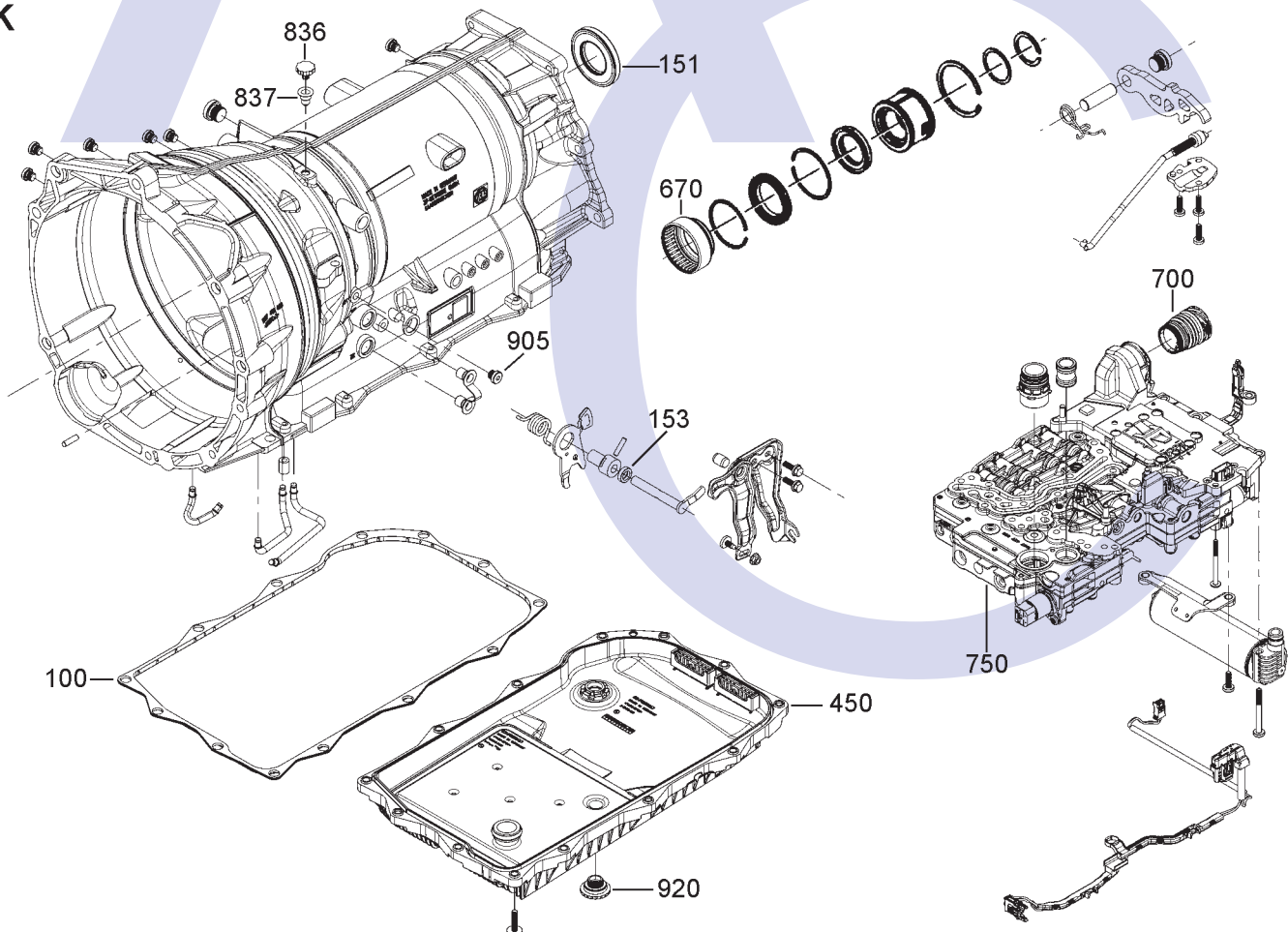
'D' Clutch

J



Planetary Gear Set No. 4

K



8 SPEED 4WD (Full Electronic Control)



AUTOMATIC CHOICE



THE AUTOMATIC TRANSMISSION PARTS WAREHOUSE

ILL NO.	DESCRIPTION	YEARS	QTY	PART NO
KITS				
Kit	Overhaul Kit (OEM)..... All		1	8HP70.OHK01
Kit	Overhaul Kit (Transtec®)..... All		1	8HP70.OHK03
GASKETS				
100K	Pan Gasket, Rubber (OE)..... All		1	8HP45.GAS01
100K	Pan Gasket, Rubber (Transtec®) All		1	8HP45.GAS11
RUBBER COMPONENTS				
127D	'O' Ring, Input Shaft Lock Up.... All		1	8HP45.OR02
METAL CLAD SEALS				
150A	Converter to Centring Plate (OE) All		1	8HP45.MCS01
150A	Converter to Centring Plate (Transtec®) All		1	8HP45.MCS11
151K	Output Seal (Transtec®) All		1	8HP45.MSC13
153K	Manual Shaft Seal (Transtec®). All		1	8HP70.MCS04
MOULDED PISTONS				
SEALING RINGS				
Kit	Sealing Ring (Transtec®)..... 11-ON		1	8HP45.SRK01
200D	Input Shaft Front (Transtec®) ... 11-ON		5	8HP45.SSR01
201D	Input Shaft Rear (Transtec®).... 11-ON		2	8HP45.SSR01
204J	Output Shaft to 'D' Clutch (Transtec®) 11-ON		2	8HP45.SSR02
FRICTION PLATES				
250B	'A' Clutch All		5	8HP70.FRP01
251C	'B' Clutch All		5	8HP70.FRP02
252F	'E' Clutch (Outer Teeth)..... All		5	8HP70.FRP03
253G	'C' Clutch (Outer Teeth)..... All		6	8HP70.FRP03
256H	'D' Clutch..... All		4	8HP70.FRP04
STEEL PLATES				
301B	'A' Clutch All		5	8HP70.STP01
303C	'B' Clutch All		5	8HP70.STP02
305F	'E' Clutch (Inner Teeth)..... All		5	8HP70.STP03
307G	'C' Clutch (Inner Teeth) All		6	8HP70.STP03
308H	'D' Clutch..... All		4	8HP70.STP04
PRESSURE PLATES				
SPRINGS & CIRCLIPS				

ILL NO.	DESCRIPTION	YEARS	QTY	PART NO
FILTERS				
450K	Oil Pan and Filter Kit W/ Bolts (8HP70X) (Codes: 1087 020 012) All		1	8HP70.PAN01
450K	Oil Pan and Filter Kit W/ Bolts (8HP70X) (Codes: 1087 020 002, 017, 047-50) All		1	8HP70.PAN02
FILTERS Cont...				
450K	Oil Pan and Filter Kit W/ Bolts (8HP70X) (Codes: 1087 020 003, 007, 009-011, 013, 014, 016, 018, 023, 035, 040-044, 055-060) All		1	8HP70.PAN03
450K	Oil Pan and Filter Kit W/ Bolts (8HP70X HIS) (Codes: 1087 024 005) All		1	8HP70.PAN01
450K	Oil Pan and Filter Kit W/ Bolts (8HP70X HIS) (Codes: 1087 024 045) All		1	8HP70.PAN02
450K	Oil Pan and Filter Kit W/ Bolts (8HP70X HIS) (Codes: 1087 024 006, 008, 009, 011, 026, 029-031, 034-036, 041, 042, 057-063) All		1	8HP70.PAN03
450K	Oil Pan and Filter Kit W/ Bolts (Aftermarket) All		1	8HP70.PAN11
BUSHINGS				
THRUST WASHERS & BEARINGS				
670K	Needle Bearing, Output Shaft... All		1	6HP26.BE02
ELECTRICAL COMPONENTS				
700K	Case Connector/Guide Sleeve . All		1	8HP45.ELE01
VALVE BODY PARTS				
750K	Mechatronic Unit, Exchange Vehicle & Transmission Details Required All		1	8HP70.VBxx
HARD PARTS				
802A	Drive Chain, Oil Pump All		1	8HP55.CH01
803A	Oil Pump All		1	8HP45.PUM01
836K	Plastic Breather Cap All		1	5HP19.CAP01
837K	Plastic Breather Tube..... All		1	5HP19.BRE01
SPECIAL ITEMS				
900A	Bolt, Pump to Case (Aluminium) . All		14	8HP45.NUT01
905K	Screw Plug, Casing (M10x1) All		1	4HP20.PLU01
920K	Plug, Oil Pan (Plastic)..... All		1	8HP45.PLU01
NI	LifeGuardFluid8 Transmission Fluid (1 x 1 Ltr Bottle) All		AR	OIL.67
	(1 x 10 Ltr Canister) All		AR	OIL.77
	(1 x 20 Ltr Canister) All		AR	OIL.68
	(1 x 209 Ltr Barrel)..... All		AR	OIL.65



AUTOMATIC CHOICE



THE AUTOMATIC TRANSMISSION PARTS WAREHOUSE

[illegible][illegible]