

ZF 6HP26A61 1068 030 xxx, ZF 6HP28A61 1068 090 xxx (Audi, Bentley)

ZF 6HP28AF 1084 030 xxx (Audi, Bentley)

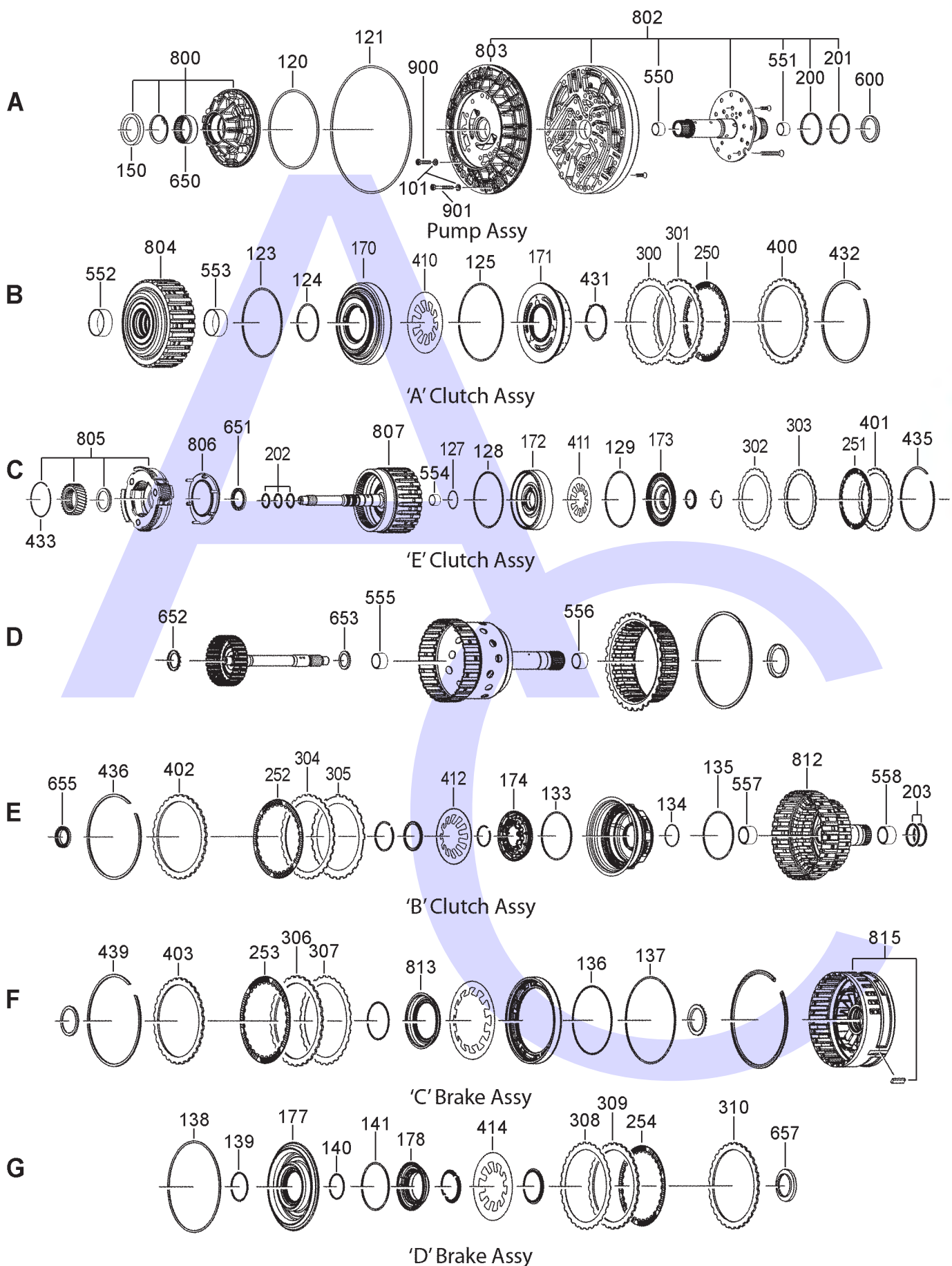
6 SPEED IN LINE AWD (Full Electronic Control)



AUTOMATIC CHOICE



THE AUTOMATIC TRANSMISSION PARTS WAREHOUSE



ZF 6HP26A61 1068 030 xxx, ZF 6HP28A61 1068 090 xxx (Audi, Bentley)
 ZF 6HP28AF 1084 030 xxx (Audi, Bentley)
6 SPEED IN LINE AWD (Full Electronic Control)

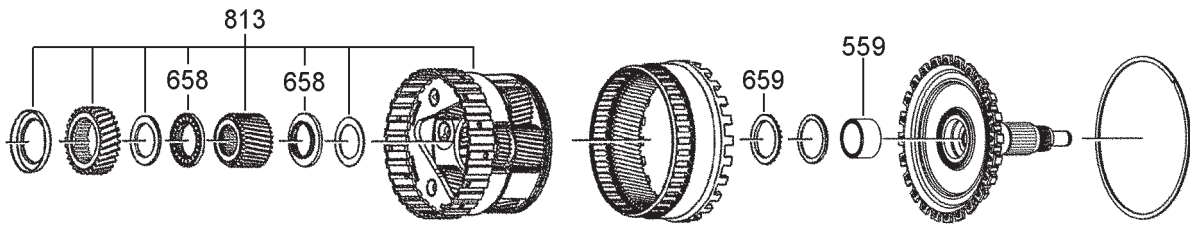


AUTOMATIC CHOICE



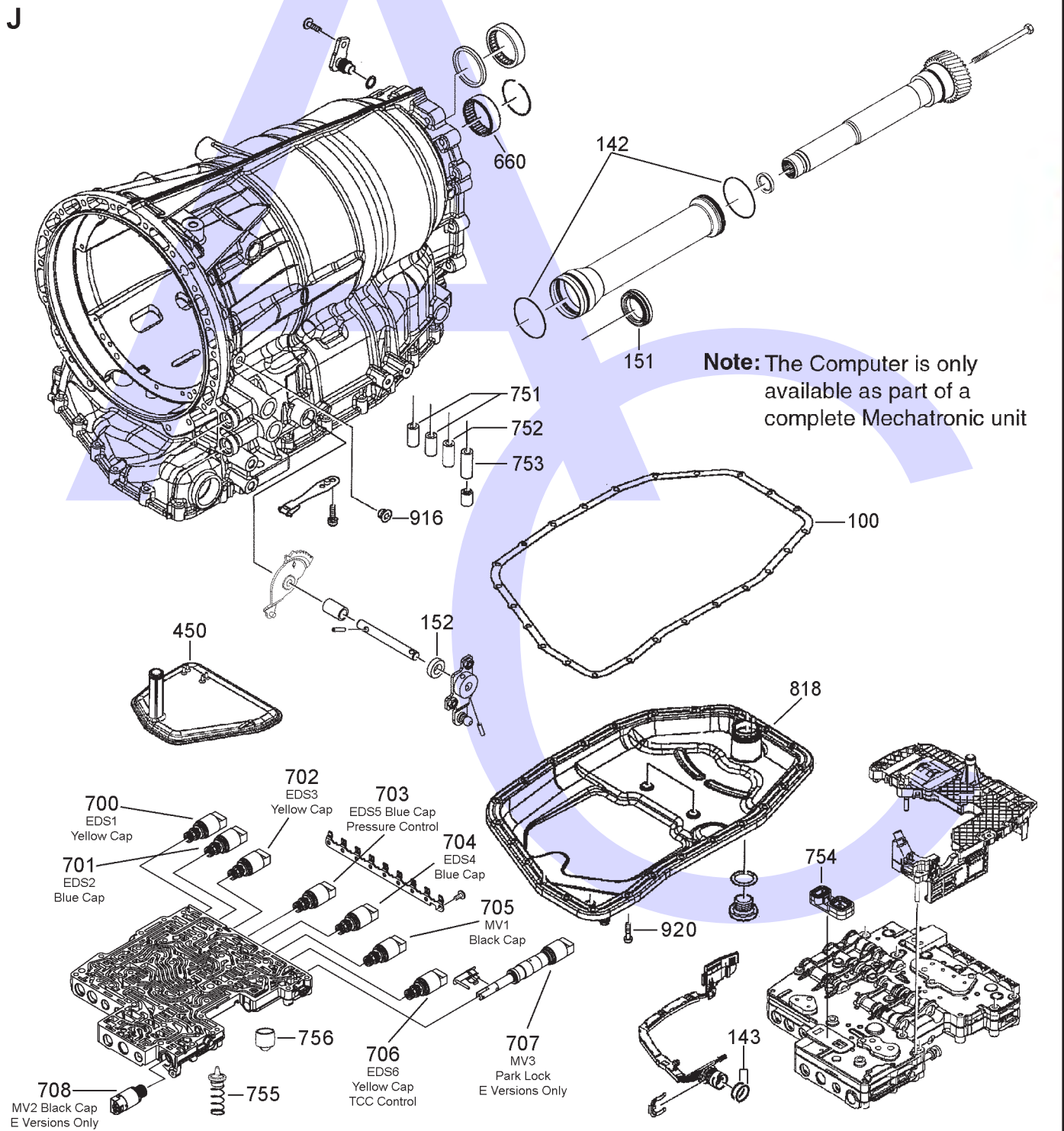
THE AUTOMATIC TRANSMISSION PARTS WAREHOUSE

H



Rear Planet & Output

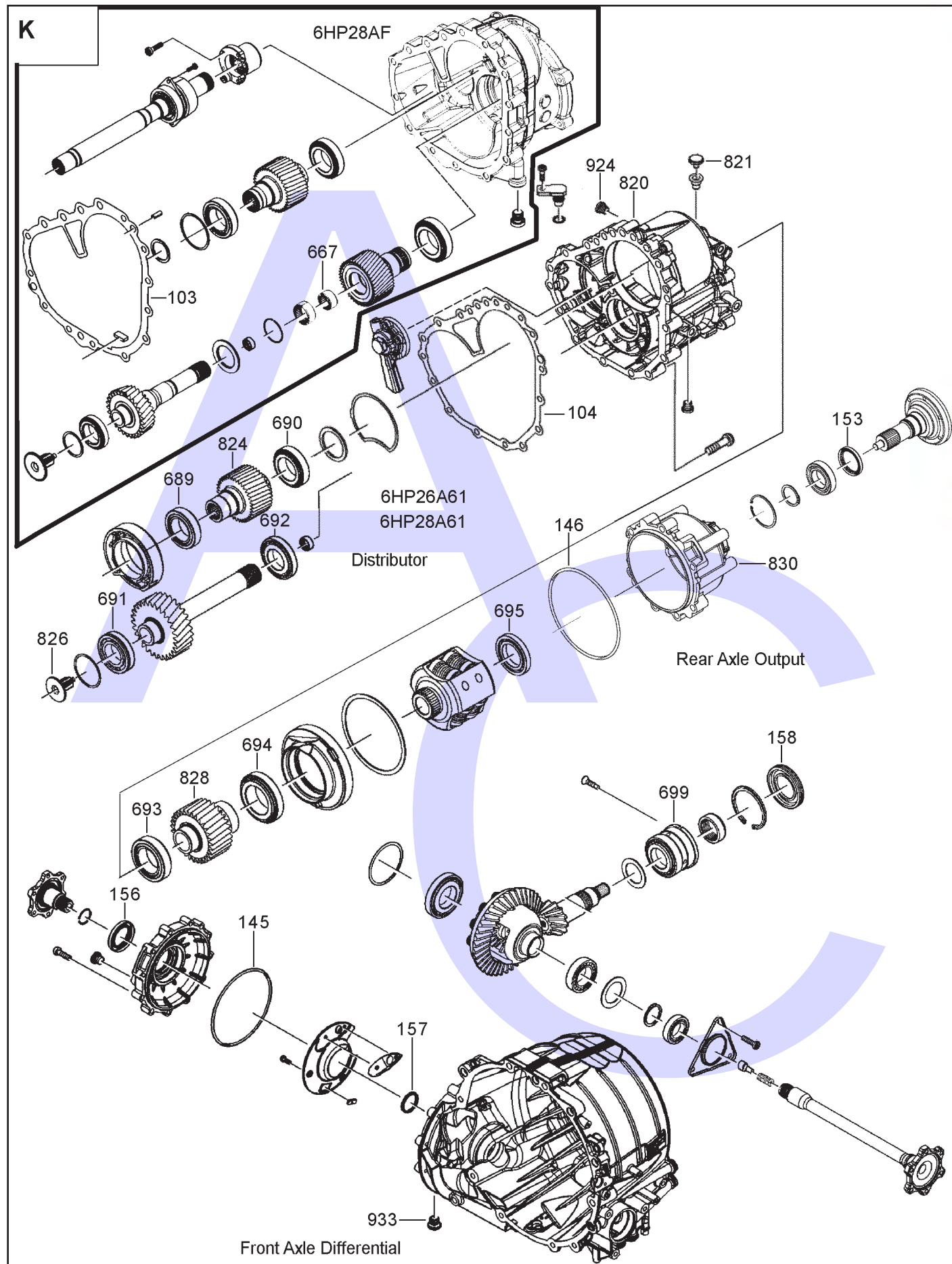
J



ZF 6HP26A61 1068 030 xxx, ZF 6HP28A61 1068 090 xxx (Audi, Bentley)

ZF 6HP28AF 1084 030 xxx (Audi, Bentley)

6 SPEED IN LINE AWD (Full Electronic Control)



AUTOMATIC CHOICE



THE AUTOMATIC TRANSMISSION PARTS WAREHOUSE

ZF 6HP26A61 1068 030 xxx, ZF 6HP28A61 1068 090 xxx (Audi, Bentley)
ZF 6HP28AF 1084 030 xxx (Audi, Bentley)
6 SPEED IN LINE AWD (Full Electronic Control)



AUTOMATIC CHOICE



THE AUTOMATIC TRANSMISSION PARTS WAREHOUSE

ILL NO.	DESCRIPTION	YEARS	QTY	PART NO
KITS				
Kit	Overhaul Kit (6HP26A) (OEM) (Transmission) All	1		6HP26A.OHK01
Kit	Overhaul Kit (6HP28A61) (Audi RS6, Code: 1068 090 003). All	1		6HP28A.OHK01
Kit	Seal Kit (6HP26A) (OEM) (Differential A61) All	1		6HP26A.OHK03
GASKETS				
100J	Oil Pan (6HP26A61) (Codes: 1068 030 014, 015, 017, 018, 024, 027, 029-033, 035-041, 043, 044, 048, 049, 058-061, 072, 084) (OEM) All	1		6HP26A.GAS01
	(AM) All	1		6HP26A.GAS51
100J	Oil Pan (6HP26A61) (Codes: 1068 030 056, 064, 067-070, 073-075, 077-083, 085) (OEM) All	1		6HP28A.GAS01
100J	Oil Pan (6HP28A, 6HP28AF, 6HP26A61) (OEM) All	1		6HP28A.GAS01
101A	Pump Bolt Sealing Washer All	14		5HP18.GAS04
103K	Intermediate Housing to Main Case (6HP28AF) All	1		8HP55A.GAS04
104K	Intermediate Housing to Main Case (6HP26A61, 6HP28A61) All	1		6HP26A.GAS02
RUBBER COMPONENTS				
120A	'O' Ring, Pump to Stator All	1		4HP24.OR01
121A	'O' Ring, Stator to Case All	1		5HP18.OR02
123B	'O' Ring, 'A' Clutch Piston Outer... All	1		6HP28A.OR02
124B	'O' Ring, 'A' Clutch Piston Inner... All	1		4HP22.OR07
125B	'O' Ring, 'A' Clutch Damper Outer . All	1		6HP28A.OR04
127C	'O' Ring, 'E' Clutch Piston (Inner) (6HP26A61) All	1		6HP26.OR03
128C	'O' Ring, 'E' Clutch Piston (Outer) (6HP26A61) All	1		6HP26.OR04
129C	'O' Ring, 'E' Clutch Damper (6HP26A61) All	1		6HP19.OR06
133E	'O' Ring, 'B' Damper Outer All	1		6HP26.OR06
134E	'O' Ring, 'B' Piston Inner All	1		4HP14.OR06
135E	'O' Ring, 'B' Piston Outer All	1		6HP26.OR06
136F	'O' Ring, 'C' Piston Inner (6HP26A61) All	1		6HP26.OR08
136F	'O' Ring, 'C' Piston Inner (6HP28A61, 6HP28AF) All	1		6HP28A.OR08
137F	'O' Ring, 'C' Piston Outer (6HP26A61) All	1		5HP24.OR10
137F	'O' Ring, 'C' Piston Outer (6HP28A61, 6HP28AF) All	1		6HP28A.OR07
138G	'O' Ring, 'D' Piston Outer (6HP26A61) All	1		6HP26.OR09
138G	'O' Ring, 'D' Piston Outer (6HP28A61, 6HP28AF) All	1		6HP28A.OR06
139G	'O' Ring, 'D' Piston Inner (6HP26A61) (Codes: 1068 030 002-005, 007-009, 011, 012, 014, 015, 017, 018, 022, 027, 031, 032, 035, 040, 041) All	1		5HP19.OR16
140G	'O' Ring, 'D' Damper Inner All	1		6HP19.OR02
141G	'O' Ring, 'D' Damper Outer All	1		5HP19.OR09
142J	'O' Ring, Protective Tube (6HP26A61, 6HP28A61) All	2		4HP22.OR07
143J	Case Connector 'O' Ring All	2		5HP18.OR03
145K	'O' Ring, Differential Cover All	1		5HP19.OR04
146K	'O' Ring, Distributor Hsg to Intermediate Hsg All	1		5HP30.OR01

ILL NO.	DESCRIPTION	YEARS	QTY	PART NO
METAL CLAD SEALS				
150A	Front Pump All	1		6HP26.MCS01
151J	Double Lip Output Seal (66mm x 44mm x 14mm/64mm x 44mm x 14mm) All	1		6HP26A.MSC01
152J	Selector Shaft Seal (10mm x 18mm x 5mm) All	1		3HP22.MCS03
153K	Rear Output Flange All	1		6HP28A.MCS03
156K	Front Axle R/Hand (OEM) All	1		6HP19A.MCS01
156K	Front Axle R/Hand (AM) All	1		6HP19A.MCS51
157K	Front Axle (L/Hand) All	1		6HP19A.MCS02
158K	Pinion Shaft (6HP28AF) All	1		6HP28A.MCS01
PISTONS				
170B	'A' Clutch (Fits Box Code 1068 030 017, 018) All	1		6HP26.PIS01
170B	'A' Clutch (Fits Box Code 1068 030 014, 015, 027, 031, 032, 035, 040, 041) All	1		6HP26.PIS03
171B	'A' Clutch Damper Piston (Fits Box Code 1068 030 017, 018) All	1		6HP26.PIS02
171B	'A' Clutch Damper Piston (Fits Box Code 1068 030 014, 015, 027, 031, 032, 035, 038, 040, 041, 043, 060, 067, 082) All	1		6HP26.PIS04
172C	'E' Clutch (6HP26A61) (Fits Codes 1068 030 002, 003, 004, 005, 007) All	1		6HP26.PIS05
172C	'E' Clutch (6HP26A61) (Fits Codes 1068 030 006-049, 056-064, 067-070, 072-085) All	1		6HP26.PIS09
172C	'E' Clutch (6HP28AF) (Fits Codes 1084 030 003-023) 01-ON	1		6HP26.PIS09
173C	'E' Clutch Damper Piston All	1		6HP26.PIS06
174E	'B' Clutch Damper Piston All	1		6HP26.PIS07
177G	'D' Brake Piston (6 Plate) All	1		6HP26.PIS10
177G	'D' Brake Piston (7 Plate) All	1		6HP26.PIS11
178G	'D' Brake Damper Piston All	1		6HP26.PIS08
SEALING RINGS				
200A	Pump Stator (Front) All	1		6HP26.SSR01
201A	Pump Stator (Rear) All	1		6HP26.SSR02
202C	Input Shaft ('E' Clutch 24mm Ø) All	3		5HP19.SSR03
202C	Input Shaft ('E' Clutch 28mm Ø) All	3		6HP26.SSR05
202C	Input Shaft (1068 030 029, 033) All	3		6HP32.SSR01
203E	'B' Clutch Drum All	2		6HP26.SSR03
FRICTION PLATES				
Kit	Friction Plate (OEM) (Codes 1068 030 017, 018, 024, 027, 029, 030, 032, 033, 035, 036, 037, 038, 043, 044, 048, 049, 060, 061, 063, 067, 068) All	1		6HP26.FRK01
Kit	Friction Plate (OEM) (Codes 1068 030 040, 041, 056, 058, 059, 062, 064, 070, 072, 073, 074, 075, 077) All	1		6HP26.FRK02
250B	'A' Clutch (6HP26A61) (Except Codes 1068 030 039, 069) All	4-5		6HP26.FRP01
250B	'A' Clutch (6HP26A61) (Codes 0168 030 039, 069) All	5		6HP26.FRP07
250B	'A' Clutch (6HP28AF) All	5		6HP26.FRP07

ZF 6HP26A61 1068 030 xxx, ZF 6HP28A61 1068 090 xxx (Audi, Bentley)
ZF 6HP28AF 1084 030 xxx (Audi, Bentley)
6 SPEED IN LINE AWD (Full Electronic Control)



AUTOMATIC CHOICE

ILL NO.	DESCRIPTION	YEARS	QTY	PART NO
FRICION PLATES Cont...				
251C	'E' Clutch	All	5-7	6HP26.FRP06
252E	'B' Clutch	All	4-5	6HP26.FRP03
253F	'C' Brake	All	4-5	6HP26.FRP03
254G	'D' Brake (6HP26A61)	All	6-7	6HP26.FRP01
254G	'D' Brake (6HP28AF)	All	6-7	6HP26.FRP07
STEEL PLATES				
Kit	Steel Plate (OEM) (Codes 1068 030 017, 018, 027, 031, 032, 035, 040, 041)	All	1	6HP26.STK01
Kit	Steel Plate (OEM) (Codes 1068 030 024, 029, 030, 033, 036, 037, 038, 039, 043, 044, 048, 049, 056, 058, 059, 060, 061, 064, 067, 068, 069, 070, 072, 073, 074, 075, 077)	All	1	6HP26.STK02
300B	Wavy Steel 'A' Clutch (Fits Codes 1068 030 024, 027, 029, 030, 033, 035-038, 039-041, 043, 044, 048, 049, 056, 058-061, 064, 067-070, 072-075, 077-084)	All	1	6HP26.STP11
300B	Wavy Steel 'A' Clutch (Fits Codes 1068 030 014, 015, 017, 018, 031, 032)	All	1	6HP26.STP06
301B	'A' Clutch Steel (3.0mm)	All	4-5	6HP26.STP01
302C	Waved Steel 'E' Clutch, 6HP26A61 (Fits Codes 1068 030 002-009, 014, 015, 017, 018, 020, 022, 025, 027, 028, 031, 032, 035, 040, 041)	All	1	6HP26.STP07
302C	Waved Steel 'E' Clutch, 6HP26A61 (Fits Codes 1068 030 010, 013, 016, 019, 021, 023-026, 028-030, 033, 034, 036-039, 042-049, 056-064, 067-070, 072-085)	All	1	6HP26.STP12
302C	Waved Steel 'E' Clutch, 6HP28AF	All	1	6HP26.STP12
303C	'E' Clutch Steel 6HP26A61 (2.40mm) (Codes: 1068 030 024, 029, 030, 033, 036-039, 043, 044, 048, 049, 056, 058-061, 064, 067-070, 072-075, 077-084)	All	7	6HP26.STP04
303C	'E' Clutch Steel 6HP28AF (2.40mm) (Codes: 1084 030 011)	All	7	6HP26.STP04
303C	'E' Clutch Steel 6HP26A61 (3.00mm) (Codes: 1068 030 014, 015, 017, 018, 027, 031, 032, 035, 040, 041)	All	6	6HP26.STP02
303C	'E' Clutch Steel 6HP28AF (3.00mm) (Codes: 1084 030 007, 013-016, 018)	All	6	6HP26.STP02
304E	'B' Clutch Steel (2.10mm)	All	4-5	6HP26.STP03
305E	Wavy Steel 'B' Clutch (Fits Codes 1068 030 014, 015, 017, 018, 024, 027, 029-033, 035-041, 043, 044, 048, 049, 056, 058-061, 064, 067-070, 072-075, 077-084)	All	1	6HP26.STP08
305E	Wavy Steel 'B' Clutch (Fits Codes 1068 030 024, 027, 029, 030, 033, 035-041, 043, 044, 048, 049, 056, 058-061, 064, 067-070, 072-075, 077-084)	All	1	6HP26.STP11
306F	'C' Brake Steel (3.00mm)	All	4-5	6HP26.STP01
307F	Waved Steel 'C' Brake	All	1	6HP26.STP08
308G	Wavy Steel 'D' Brake (Fits Codes 1068 030 024, 027, 029, 030, 033, 035-041, 043, 044, 048, 049, 056, 058-061, 064, 067-070, 072-075, 077-084)	All	1	6HP26.STP11

ILL NO.	DESCRIPTION	YEARS	QTY	PART NO
STEEL PLATES Cont...				
308G	Wavy Steel 'D' Brake (Fits Codes 1068 030 014, 015, 017, 018, 031, 032)	All	1	6HP26.STP06
309G	'D' Brake Steel (2.10mm)	All	6-7	6HP26.STP03
310G	End Steel 'D' Brake (Selective) (2.10mm Thick)	All	1	6HP26.STP03
	(3.00mm Thick)	All	1	6HP26.STP01
PRESSURE PLATES				
400B	'A' Clutch	All	1	6HP26.PP04
401C	'E' Clutch	All	1	6HP26.PP02
402E	'B' Clutch	All	1	6HP26.PP03
403F	'C' Brake (3.90mm)	All	1	6HP26.PP01
SPRINGS & CIRCLIPS				
410B	Diaphragm 'A' Clutch	All	1	6HP26.DIA01
411C	Diaphragm 'E' Clutch	All	1	6HP26.DIA02
412E	Diaphragm 'B' Clutch	All	1	6HP26.DIA03
414G	Diaphragm 'D' Brake	All	1	6HP26.DIA04
431B	'A' Clutch Damper, Retaining K Ring Circlip	All	1	6HP28A.RET01
433C	Snap Ring, Front Planet to 'A' Clutch Drum	All	1	6HP26.RET01
432B	Circlip, 'A' Clutch Retaining (2.20mm).....	01-ON	AR	6HP26.CIR01
	(2.40mm).....	01-ON	AR	6HP26.CIR02
	(2.60mm).....	01-ON	AR	6HP26.CIR03
	(2.80mm).....	01-ON	AR	6HP26.CIR04
	(3.00mm).....	01-ON	AR	6HP26.CIR05
	(3.20mm).....	01-ON	AR	6HP26.CIR06
	(3.40mm).....	01-ON	AR	6HP26.CIR07
	(3.60mm).....	01-ON	AR	6HP26.CIR08
	(3.80mm).....	01-ON	AR	6HP26.CIR09
	(4.00mm).....	01-ON	AR	6HP26.CIR10
	(4.20mm).....	01-ON	AR	6HP26.CIR11
	(4.40mm).....	01-ON	AR	6HP26.CIR12
	(4.60mm).....	01-ON	AR	6HP26.CIR13
435C	Circlip, 'E' Clutch Retaining (1.80mm).....	All	AR	5HP24.CIR04
	(2.00mm).....	All	AR	5HP24.CIR05
	(2.20mm).....	All	AR	5HP24.CIR06
	(2.40mm).....	All	AR	5HP24.CIR07
	(2.60mm).....	All	AR	5HP24.CIR08
	(2.80mm).....	All	AR	5HP24.CIR16
	(3.00mm).....	All	AR	5HP24.CIR01
	(3.20mm).....	All	AR	5HP24.CIR10
	(3.40mm).....	All	AR	5HP24.CIR11
	(3.60mm).....	All	AR	5HP24.CIR12
436E	Circlip, 'B' Clutch Retaining (2.20mm).....	01-ON	AR	6HP26.CIR01
	(2.40mm).....	01-ON	AR	6HP26.CIR02
	(2.60mm).....	01-ON	AR	6HP26.CIR03
	(2.80mm).....	01-ON	AR	6HP26.CIR04
	(3.00mm).....	01-ON	AR	6HP26.CIR05
	(3.20mm).....	01-ON	AR	6HP26.CIR06
	(3.40mm).....	01-ON	AR	6HP26.CIR07
	(3.60mm).....	01-ON	AR	6HP26.CIR08
	(3.80mm).....	01-ON	AR	6HP26.CIR09
	(4.00mm).....	01-ON	AR	6HP26.CIR10
	(4.20mm).....	01-ON	AR	6HP26.CIR11
	(4.40mm).....	01-ON	AR	6HP26.CIR12
	(4.60mm).....	01-ON	AR	6HP26.CIR13



THE AUTOMATIC TRANSMISSION PARTS WAREHOUSE

ZF 6HP26A61 1068 030 xxx, ZF 6HP28A61 1068 090 xxx (Audi, Bentley)
ZF 6HP28AF 1084 030 xxx (Audi, Bentley)
6 SPEED IN LINE AWD (Full Electronic Control)



AUTOMATIC CHOICE



THE AUTOMATIC TRANSMISSION PARTS WAREHOUSE

ILL NO.	DESCRIPTION	YEARS	QTY	PART NO
SPRINGS & CIRCLIPS Cont...				
439F	Circlip, 'C' Clutch Retaining (2.20mm).....	01-ON	AR	6HP26.CIR01
	(2.40mm).....	01-ON	AR	6HP26.CIR02
	(2.60mm).....	01-ON	AR	6HP26.CIR03
	(2.80mm).....	01-ON	AR	6HP26.CIR04
	(3.00mm).....	01-ON	AR	6HP26.CIR05
	(3.20mm).....	01-ON	AR	6HP26.CIR06
	(3.40mm).....	01-ON	AR	6HP26.CIR07
	(3.60mm).....	01-ON	AR	6HP26.CIR08
	(3.80mm).....	01-ON	AR	6HP26.CIR09
	(4.00mm).....	01-ON	AR	6HP26.CIR10
	(4.20mm).....	01-ON	AR	6HP26.CIR11
	(4.40mm).....	01-ON	AR	6HP26.CIR12
	(4.60mm).....	01-ON	AR	6HP26.CIR13
FILTERS				
450J	Pick Up Filter (6HP26A61 OE) . All		1	6HP26A.FIL01
450J	Pick Up Filter (6HP26A61 AM) . All		1	6HP26A.FIL11
450J	Pick Up Filter (6HP28A/AF OE) (92mm Outlet Tube)..... All		1	6HP28A.FIL01
450J	Pick Up Filter (6HP28A/AF AM) (92mm Outlet Tube)..... All		1	6HP28A.FIL11
BUSHINGS				
Kit	Bushing Kit Bronze (14 Bushings) (Complete, All Rear Stator Options) 01-ON		1	6HP26.BK01
Kit	Bushing Kit (12 Bushings) Does Not Contain 31x 28 x 16.50 Rear Stator Option . 01-ON		1	6HP26.BK02
550A	Stator, Front (26 x 23 x 16.50mm) 01-ON		1	6HP26.BUS02
551A	Stator, Rear (Options) (29mm x 26mm x 15.90mm)..... 01-ON		1	6HP26.BUS03
	(29mm x 26mm x 15.90mm)..... 01-ON		1	6HP26.BUS13
	(31mm x 28mm x 16.50mm)..... 01-ON		1	6HP26.BUS05
	(33mm x 30mm x 18.80mm Bronze) 01-ON		1	6HP26.BUS04
	(33mm x 30mm x 18.80mm Babbit) . 01-ON		1	6HP26.BUS06
552B	'A' Clutch Drum, Front (63 x 60 x 7.90mm)..... 01-ON		1	6HP26.BUS07
553B	'A' Clutch Drum, Rear (53 x 50 x 7.40mm)..... 01-ON		1	6HP26.BUS08
554C	'E' Clutch Drum (20 x 17 x 10mm) . 01-ON		1	6HP26.BUS12
555D	Sun Gear Shaft, Front (Options) (27 x 24 x 11.50mm)..... 01-ON		1	6HP26.BUS09
	(28 x 25 x 11.50mm)..... 01-ON		1	6HP26.BUS10
556D	Sun Gear Shaft, Rear (Options) (27 x 24 x 11.50mm)..... 01-ON		1	6HP26.BUS09
	(28 x 25 x 11.50mm)..... 01-ON		1	6HP26.BUS10
557E	'B' Clutch Drum, Front (37 x 34 x 11.5mm)..... 01-ON		1	6HP26.BUS11
558E	'B' Clutch Drum, Rear (37 x 34 x 11.5mm)..... 01-ON		1	6HP26.BUS11
559H	Output Shaft (20 x 17 x 10mm) ... 01-ON		1	6HP26.BUS12
NI	Bushing Installer Kit..... 01-ON		1	6HP26.TOOL02
THRUST WASHERS & BEARINGS				
600A	Shim, Selective (Rear of Pump) (2.60mm Thick)..... All		AR	6HP26.SHIM01
	(2.80mm Thick)..... All		AR	6HP26.SHIM02
	(3.00mm Thick)..... All		AR	6HP26.SHIM03
	(3.20mm Thick)..... All		AR	6HP26.SHIM04
	(3.40mm Thick)..... All		AR	6HP26.SHIM05
	(3.60mm Thick)..... All		AR	6HP26.SHIM06
	(3.80mm Thick)..... All		AR	6HP26.SHIM07
	(4.00mm Thick)..... All		AR	6HP26.SHIM08
	(4.20mm Thick)..... All		AR	6HP26.SHIM09
	(4.40mm Thick)..... All		AR	6HP26.SHIM10
	(4.60mm Thick)..... All		AR	6HP26.SHIM11
	(4.80mm Thick)..... All		AR	6HP26.SHIM12

ILL NO.	DESCRIPTION	YEARS	QTY	PART NO
THRUST WASHERS & BEARINGS Cont...				
650A	Needle Bearing (Front Pump)..... All		1	6HP26.BE01
651C	Radial Bearing, 'E' Clutch to Front Planetary..... All		1	6HP26.TOR01
652D	Radial Bearing, 'E' Clutch to Intermediate Shaft..... All		1	6HP26.TOR02
653D	Radial Bearing, Sun Gear Shaft to Intermediate Shaft..... All		1	6HP26.TOR01
655E	Radial Bearing, 'B' Clutch to Sun Gear Shaft..... All		1	6HP26.TOR03
657G	Radial Bearing, ('D' Brake to Rear Sun Gear) All		1	6HP26.TOR05
658H	Radial Bearing, Rear Planetary All		2	6HP26.TOR04
659H	Radial Bearing, (Rear Planet to O. Shaft) All		1	6HP26.TOR06
660J	Needle Bearing, Output Shaft... All		1	6HP26.BE02
667K	Bearing, Output Gear (Rear) (6HP28AF)..... All		1	6HP19A.BE01
689K	Roller Bearing Input (Front) All		1	6HP26A.BE01
690K	Roller Bearing Input (Rear)..... All		1	6HP26A.BE01
691K	Bearing, Front Axle Shaft (Front).. All		1	6HP26A.BE04
692K	Bearing, Front Axle Shaft (Rear) .. All		1	6HP26A.BE04
693K	Roller Bearing Output (Front).... All		1	6HP26A.BE01
694K	Roller Bearing Output (Rear) All		1	6HP26A.BE02
695K	Roller Bearing Differential (Rear) . All		1	6HP26A.BE03
699K	Pinion Bearing Assy (6HP26A61) . All		1	5HP19.BE05
699K	Pinion Bearing Assy (6HP28AF)... All		1	6HP28A.BE01
ELECTRICAL COMPONENTS				
Kit	Solenoid Kit (6HP26A61 , OEM) (Codes: 1068 030 014, 015, 017, 018, 024, 026, 027, 029-033 035-038, 048, 049, 056, 063, 072, 073, 078) All		1	6HP19.SOL02
Kit	Solenoid Kit (6HP26A61 , OEM) (Codes: 1068 030 039-041, 043, 044, 046, 047, 057-061, 067-070, 075, 080, 081-083) All		1	6HP19.SOL03
Kit	Solenoid Kit (6HP28AF , OEM) (Codes: 1084 030 003-023) All		1	6HP19.SOL04
700J	EDS1 Solenoid (PWM) (Yellow Cap)..... All		1	6HP26.SOL03
701J	EDS2 Solenoid (PWM) (Blue Cap)..... All		1	6HP26.SOL04
702J	EDS3 Solenoid (PWM) (Yellow Cap)..... All		1	6HP26.SOL03
703J	EDS5 Solenoid (PWM) (Pressure Control Blue Cap)..... All		1	6HP26.SOL04
704J	EDS4 Solenoid (PWM) (Blue Cap)..... All		1	6HP26.SOL04
705J	MV1 Solenoid (On/Off) (Black Cap) All		1	6HP26.SOL02
706J	EDS6 Solenoid (PWM) (TCC Control Yellow Cap)..... All		1	6HP26.SOL03
707J	MV3 Solenoid (On/Off) (Park Lock, E Versions Only) All		1	6HP26.SOL05
708J	MV2 Solenoid (On/Off) (Black Cap, E Versions Only).... All		1	6HP26.SOL02

ZF 6HP26A61 1068 030 xxx, ZF 6HP28A61 1068 090 xxx (Audi, Bentley)
ZF 6HP28AF 1084 030 xxx (Audi, Bentley)
6 SPEED IN LINE AWD (Full Electronic Control)



AUTOMATIC CHOICE



THE AUTOMATIC TRANSMISSION PARTS WAREHOUSE

ILL NO.	DESCRIPTION	YEARS	QTY	PART NO
VALVE BODY PARTS				
Kit	Valve Body End Plug Kit	All	1	6HP26.VA02
751J	Sealing Sleeve, Valve Body to Case.....	All	2	6HP26.TU01
752J	Sealing Sleeve, Valve Body to Case.....	All	1	6HP26.TU02
753J	Sealing Sleeve, Valve Body to Case.....	All	1	6HP26.TU03
754J	Valve Body to Case (Rubber Spacer Gasket)	All	1	6HP26A.TU01
755J	Spring & Cap Assy (Return Valve for Clutches & Retaining Valve for Converter Pressure)	All	2	6HP26.VA01
756J	Damper Piston (Gen1).....	All	6	5HP19.ACC02
756J	Damper Piston (Gen2).....	All	7	5HP19.ACC02
NI	Bonded Rubber Intermediate Plate for Mechatronic Unit / Valve Body (Gen1, A & B052 Bonded to Plate) (OEM)	All	1	6HP26.SP01
	(AM)	All	1	6HP26.SP51
	(Sonnax® Info)	All	1	6HP26.SP31
	(Gen1, A & B051 Bonded to Plate) (OEM)	All	1	6HP26.SP03
	(AM)	All	1	6HP26.SP53
	(Gen2, A & B063 Bonded to Plate) (OEM)	01-ON	1	6HP21.SP01
	(AM)	01-ON	1	6HP21.SP51
	(Gen2, A & B065 Bonded to Plate) (OEM)	01-ON	1	6HP21.SP02
	(AM)	01-ON	1	6HP21.SP52
Kit	Gen1 , Pressure Regulator Valve (Oversize) Requires Toolkit 6HP19.VA02 & AG4.VA05 Universal Fixture (Sonnax® Click here for Info) ...	01-ON	1	6HP19.VA01
Kit	Toolkit for 6HP19.VA01 (Sonnax®).....	01-ON	1	6HP19.VA02
Kit	Gen1 , Sleeve, Pressure Regulator Valve (Sonnax® Click here for Info) ...	01-ON	1	6HP19.VA03
Kit	Valve Body End Plug (13mm & 17mm) (Sonnax® Click here for Info) ...	01-ON	1	6HP19.VA04
Kit	Gen1 , Valve Body End Plug (12mm) (Sonnax® Click here for Info) ...	01-ON	1	6HP19.VA05
Kit	Gen1 , Boost Valve & Sleeve (Sonnax® Click here for Info) ...	01-ON	1	6HP19.VA06
Kit	Gen1 & Gen2 , Accumulator Pistons & Springs (Sonnax® Click here for Info) ...	01-ON	1	6HP19.VA07
Kit	Gen1 , Lubrication Control Valve (Oversize) Requires Toolkit 6HP19.VA09 & AG4.VA05 Universal Fixture (Sonnax® Click here for Info) ...	01-ON	1	6HP19.VA08
Kit	Toolkit for 6HP19.VA08 (Sonnax®).....	01-ON	1	6HP19.VA09
Kit	Gen1 , Solenoid Pressure Regulator Valve (Oversize) Requires Toolkit 6HP19.VA11 & AG4.VA05 Universal Fixture (Sonnax® Click here for Info) ...	01-ON	1	6HP19.VA10
Kit	Toolkit for 6HP19.VA10 (Sonnax®).....	01-ON	1	6HP19.VA11
Kit	Gen1 & Gen2 , Converter Release Regulator Valve (Oversize) Requires Toolkit 6HP19.VA14 & AG4.VA05 Universal Fixture (Sonnax® Click here for Info) ...	01-ON	1	6HP19.VA13
Kit	Toolkit for 6HP19.VA13 (Sonnax®).....	01-ON	1	6HP19.VA14

ILL NO.	DESCRIPTION	YEARS	QTY	PART NO
VALVE BODY PARTS Cont...				
Kit	Gen1 , Bypass Clutch Control Valve (Oversize) Requires Toolkit 6HP19.VA16 & AG4.VA05 Universal Fixture (Sonnax® Click here for Info) ...	01-ON	1	6HP19.VA15
Kit	Toolkit for 6HP19.VA15 (Sonnax®).....	01-ON	1	6HP19.VA16
Kit	Gen1 , 'D1'/E' Clutch Control Valve (Oversize) Requires Toolkit 6HP19.VA12 & AG4.VA05 Universal Fixture (Sonnax® Click here for Info) ...	01-ON	1	6HP19.VA17
Kit	Gen1 , 'A' Clutch Control Valve (Oversize) Requires Toolkit 6HP19.VA12 & AG4.VA05 Universal Fixture (Sonnax® Click here for Info) ...	01-ON	1	6HP19.VA18
Kit	Toolkit for 6HP19.VA17 & VA18 (Sonnax®).....	01-ON	1	6HP19.VA12
Kit	Valve Body Correction Package (1st Generation) (Sonnax® ZIP KIT) (Click here for Info)	All	1	6HP19.ZIP01
Kit	Valve Body Correction Package (2nd Generation) (Sonnax® ZIP KIT) (Click here for Info)	All	1	6HP19.ZIP02
Kit	Valve Body Parts (Contains Accumulator Rubbers, Check Balls, Check Valves and Filters for the Valve Body).....	All	1	6HP26.GK01
Kit	Gen1 & Gen2 , Pressure Regulator Valve (Oversize) Requires Toolkit 6HP19.VA21 & AG4.VA05 Universal Fixture (Sonnax® Click here for Info) .	01-ON	1	6HP19.VA20
Kit	Toolkit for 6HP19.VA20 (Sonnax®).....	01-ON	1	6HP19.VA21
Kit	Gen2 , Oversized Clutch A & Clutch E Control Valve Requires Toolkit 6HP21.VA04 & AG4.VA05 Universal Fixture (Sonnax® Click here for Info) .	01-ON	1	6HP21.VA03
Kit	Toolkit for 6HP21.VA03 (Sonnax®).....	01-ON	1	6HP21.VA04
Kit	Gen2 , 'O' Ringed End Plug Kit (13 & 15mm) (Sonnax® Click here for Info) ...	All	1	6HP21.VA05
Kit	Gen2 , 'O' Ringed End Plug Kit (12mm) (Sonnax® Click here for Info) ...	All	1	6HP21.VA06
Kit	Gen2 , Oversized Bypass Clutch Control Valve Requires Toolkit 6HP21.VA08 & AG4.VA05 Universal Fixture (Sonnax® Click here for Info) ...	All	1	6HP21.VA07
Kit	Toolkit for 6HP21.VA07 (Sonnax®).....	All	1	6HP21.VA08
Kit	Gen2 , Oversized Clutch A & Clutch E Control Valve Requires Toolkit 6HP21.VA10 & AG4.VA05 Universal Fixture (Sonnax® Click here for Info) ...	All	1	6HP21.VA09
Kit	Toolkit for 6HP21.VA09 (Sonnax®).....	All	1	6HP21.VA10
Kit	Gen2 , Oversized Lubrication Control Valve Requires Toolkit 6HP21.VA12 & AG4.VA05 Universal Fixture (Sonnax® Click here for Info) ...	All	1	6HP21.VA11
Kit	Toolkit for 6HP21.VA11 (Sonnax®).....	All	1	6HP21.VA12
Kit	Gen2 , Oversized Position Valve Requires Toolkit 6HP21.VA14 & AG4.VA05 Universal Fixture (Sonnax® Click here for Info) ...	All	1	6HP21.VA13
Kit	Toolkit for 6HP21.VA13 (Sonnax®).....	All	1	6HP21.VA14

ZF 6HP26A61 1068 030 xxx, ZF 6HP28A61 1068 090 xxx (Audi, Bentley)
ZF 6HP28AF 1084 030 xxx (Audi, Bentley)
6 SPEED IN LINE AWD (Full Electronic Control)



AUTOMATIC CHOICE



THE AUTOMATIC TRANSMISSION PARTS WAREHOUSE

ILL NO.	DESCRIPTION	YEARS	QTY	PART NO
VALVE BODY PARTS Cont...				
Kit	Gen2 , Oversized Shift Valve 3 Requires Toolkit 6HP21.VA16 & AG4.VA05 Universal Fixture (Sonnax® Click here for Info) ... All	1		6HP21.VA15
Kit	Toolkit for 6HP21.VA15 (Sonnax®)..... All	1		6HP21.VA16
Kit	Gen2 , Oversized Solenoid Pressure Regulator Valve Requires Toolkit 6HP19.VA11 & AG4.VA05 Universal Fixture (Sonnax® Click here for Info) ... All	1		6HP21.VA17
Kit	Toolkit for 6HP21.VA17 (Sonnax®)..... All	1		6HP19.VA11
Kit	Gen2 , Oversized Pressure Regulator Valve Requires Toolkit 6HP21.VA20 & AG4.VA05 Universal Fixture (Sonnax® Click here for Info) ... All	1		6HP21.VA19
Kit	Toolkit for 6HP21.VA19 (Sonnax®)..... All	1		6HP21.VA20
Click here for complete Sonnax® Valve Body Diagram				
Vacuum Test Point Locations (Sonnax®) - Generation 1				
Vacuum Test Point Locations (Sonnax®) - Generation 2				
HARD PARTS				
800A	Short Pump Assy (6HP26A61) (Codes: 1068 030 024, 029, 033, 037, 039, 058, 059, 064, 069, 070, 074, 075, 077, 084) All	1		6HP26.PUM01
800A	Short Pump Assy (6HP28AF) (Codes: 1084 030 011, 021) All	1		6HP26.PUM01
802A	Stator Assembly (6HP26A61) (Codes: 1068 030 014, 015, 017, 018, 024, 031, 032) All	1		6HP26.PUM06
802A	Stator Assembly (6HP26A61) (Codes: 1068 030 027, 029, 030, 033, 035-041, 043, 044, 048, 049, 056, 060, 061, 067-069, 072, 073, 078-083, 085) All	1		6HP26.PUM09
802A	Stator Assembly (6HP28AF)..... All	1		6HP28.PUM03
803A	Centering Plate (6HP26A61) All	1		6HP26.PUM04
804B	'A' Clutch Drum (6HP26A61) All	1		6HP26.DRU05
804B	'A' Clutch Drum (Codes: 1084 030 007, 011, 013-016, 018) 07-ON	1		6HP26.DRU05
805C	Front Planetary Kit (Fits Codes: 1068 030 014, 015, 017, 018, 027, 031, 032, 035, 038, 040, 041, 043, 060, 067) All	1		6HP26.PLK01
805C	Front Planetary Kit (Fits Codes: 1068 030 024, 029, 030, 033, 036, 037, 039, 044, 048, 049, 056, 058, 059, 061, 063, 064, 068, 069, 070, 072, 073) All	1		6HP26.PLK03
807C	'E' Clutch Drum & Input Shaft, (6HP26A61) 24mm Ø Sealing Rings (Codes: 1068 030 002-005, 007, 010, 013-019, 021, 023, 024, 031, 032) All	1		6HP26.DRU01
807C	'E' Clutch Drum & Input Shaft (6HP26A61) (28mm Ø Sealing Rings) (Codes: 1068 030 026, 027, 029, 030, 033, 035-049, 056-061, 063, 064, 067-070, 072-085) All	1		6HP26.DRU02
807C	'E' Clutch Drum & Input Shaft (6HP28AF) (28mm Ø Sealing Rings) (Codes: 1084 030 003-023) All	1		6HP26.DRU06

ILL NO.	DESCRIPTION	YEARS	QTY	PART NO
HARD PARTS Cont...				
812E	'B' Clutch Drum/Sun Gear Shaft (6HP26/28A61, 6HP28AF) 01-ON	1		6HP26.DRU09
813F	Split Ring Retainer, 'C' Brake Diaphragm (Pair)..... All	1		6HP26.RET02
815F	Drum, 'C' & 'D' Brake, 4 Plate (6HP26A61) All	1		6HP26.DRU04
815F	Drum, 'C' & 'D' Brake, 5 Plate (6HP26A61, 6HP28AF) All	1		6HP26.DRU08
818J	Oil Pan All	1		6HP26A.PAN01
820K	Case, Intermediate Housing (6HP26A61) (Codes: 1068 030 059, 064, 074, 076, 077, 079, 084) All	1		6HP26A.CAS03
820K	Case, Intermediate Housing (6HP28A61) (Codes: 1068 090 003, 004) All	1		6HP26A.CAS03
821K	Plastic Breather Cap All	1		5HP19.CAP01
824K	Gear, Input All	1		6HP26A.GE01
826K	Tube, Oil Lubrication All	1		6HP26.TU05
828K	Gear, Output All	1		6HP26A.GE02
830K	Case, Distributor Housing (6HP26A61) All	1		6HP26A.CAS04
830K	Case, Distributor Housing (6HP28A61) All	1		6HP26A.CAS04
SPECIAL ITEMS				
Kit	Bolt for Oil Pan (13 Pieces) (6HP28A61, 6HP28AF) All	1		6HP28A.NUT01
900A	Bolt, Pump to Case W/Washer (M6 x 22mm)..... 01-ON	1		6HP26.NUT04
901A	Bolt, Pump to Case W/Washer (M6 x 52mm)..... 01-ON	13		6HP19.NUT01
916J	Screw Plug, Casing (M10x1) 01-ON	1		4HP20.PLU01
920J	Bolt, Oil Pan to Case (6HP26A61) All	24		5HP19.NUT05
924K	Screw Plug, Distributor (M10x1) . 01-ON	1		4HP20.PLU01
933K	Screw Plug, Front Axle Differential 6HP28AF (M10x1) 01-ON	1		4HP20.PLU01
NI	LifeGuardFluid6 Transmission Fluid (Shell M-1375.4) (Except Audi W12 Engine) (1 x 1 Ltr Bottle) All	AR		OIL.53
	(1 x 20 Ltr Canister) All	AR		OIL.54
	(1 x 209 Ltr Barrel)..... All	AR		OIL.55
NI	LifeGuardFluid8 Transmission Fluid (6HP26A61 With Audi W12 Engine Only & 6HP28AF) (1 x 1 Ltr Bottle) All	AR		OIL.67
	(1 x 10 Ltr Canister) All	AR		OIL.77
	(1 x 20 Ltr Canister) All	AR		OIL.59
	(1 x 209 Ltr Barrel)..... All	AR		OIL.65
	(1 x 1000 Ltr Container)..... All	AR		OIL.78
Note: Fill differential and transfer box with gear oil Burmah SAF-AG4				
TOOLS & MANUALS				
NI	6HP21-28 2nd Generation Tech Guide (ATSG) All	AR		6HP28.MAN01
NI	Bushing Installer Kit 01-ON	1		6HP26.TOOL02
Click here to view special tools for this transmission				