

# ZF 5HP19 HL (PORSCH) Code: 1060 050 xxx

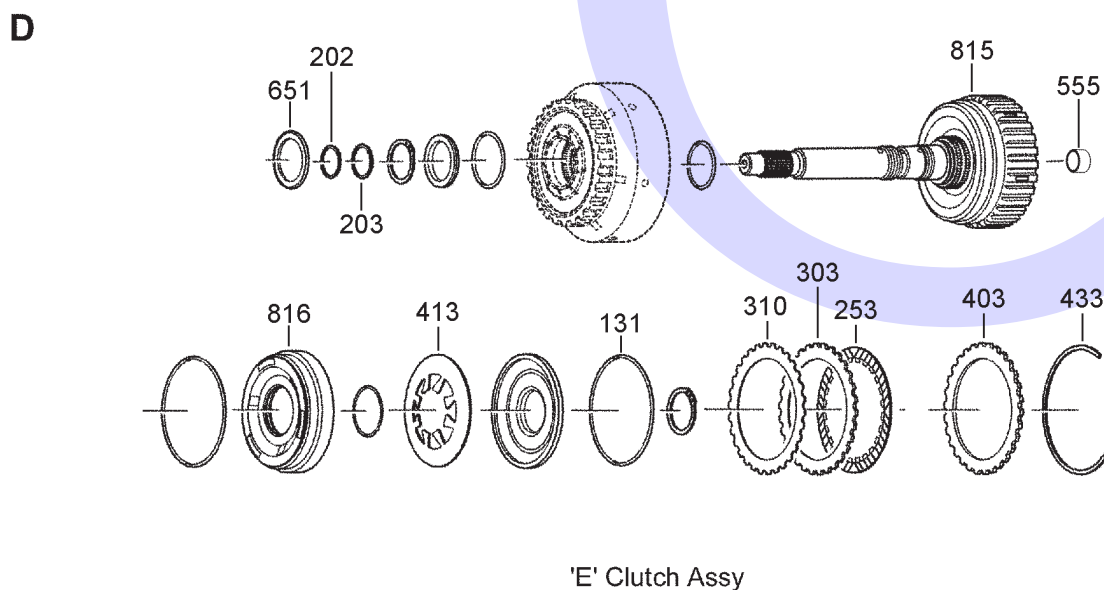
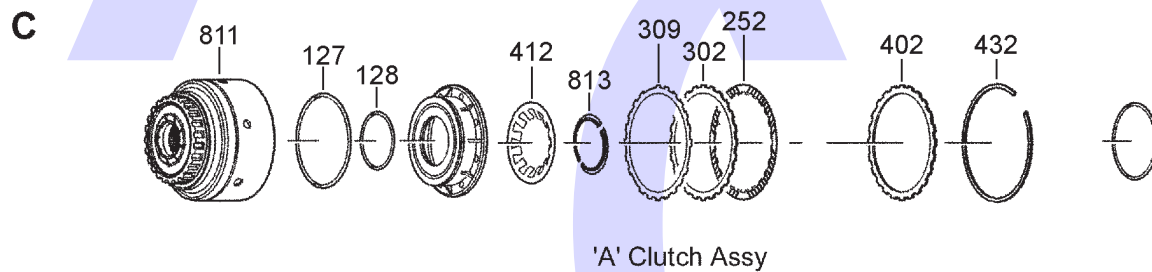
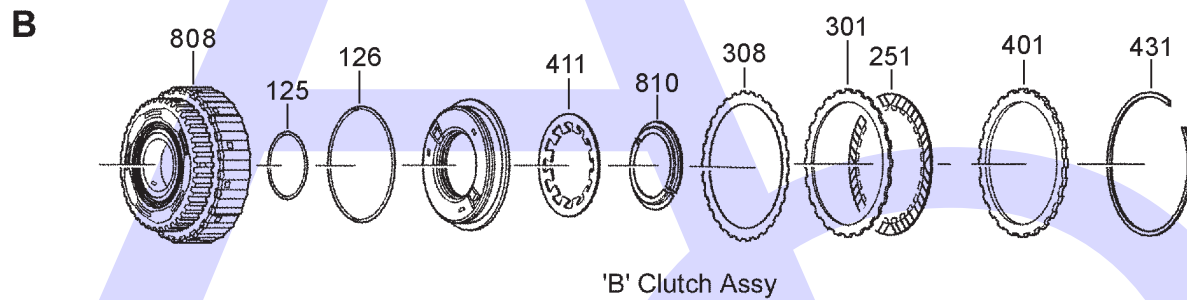
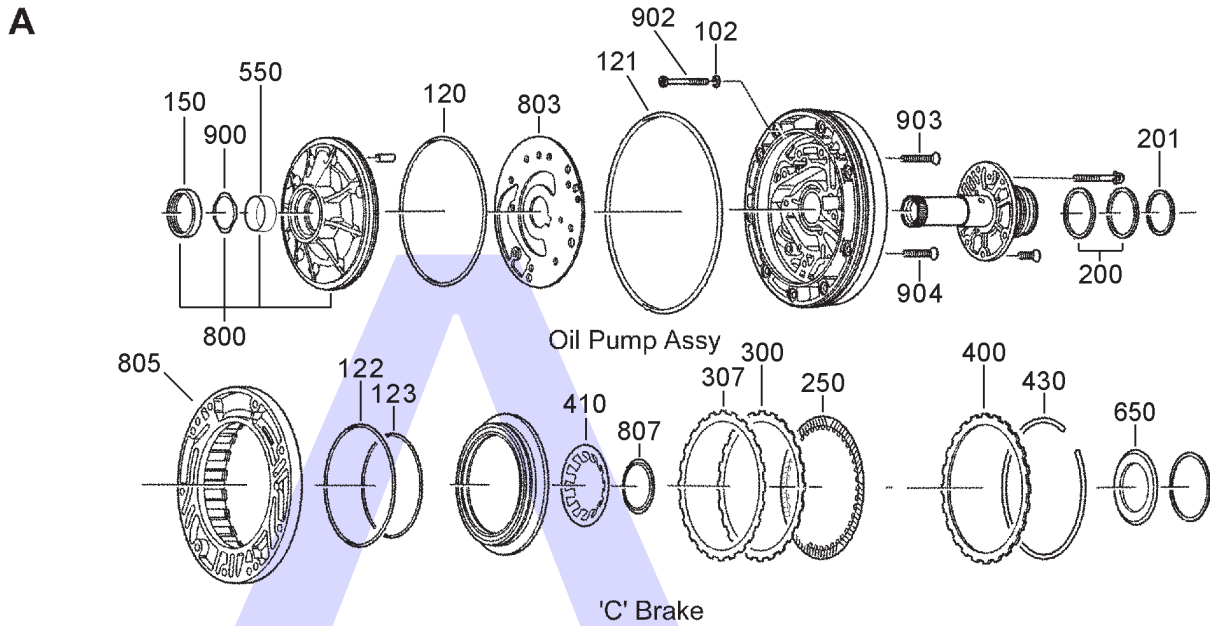
## 5 SPEED FWD (Full Electronic Control)



AUTOMATIC CHOICE



THE AUTOMATIC TRANSMISSION PARTS WAREHOUSE



**ZF 5HP19 HL (PORSCHE) Code: 1060 050 xxx**  
**5 SPEED FWD (Full Electronic Control)**



This diagram shows an exploded view of a mechanical assembly. The components are numbered as follows:

- 818**: A small cylindrical component with a central hole.
- 556**: A small cylindrical component with a central hole.
- 654**: A small cylindrical component with a central hole.
- 820**: A large, complex component with a central hole and multiple small holes around its perimeter.
- 656**: A small cylindrical component with a central hole.

The assembly is shown in two rows. The top row shows the components in a linear sequence, with the central hole of each component aligned. The bottom row shows the components in a circular arrangement, with the central hole of each component aligned. The components are shown in a perspective view, with the central hole of each component clearly visible.

## Front Planetary Assy

This diagram shows an exploded view of a mechanical assembly, likely a planetary gear set. The components are arranged in three rows and are identified by the following part numbers:

- Top Row:** 825, 826, 204, 828
- Middle Row:** 434, 404, 254, 304, 254, 304, 311, 415, 827, 134, 135
- Bottom Row:** 136, 137, 829, 416, 600, 435, 305, 312, 255, 305, 255, 405

The assembly includes various gears (e.g., 404, 254, 304, 311, 415, 827, 134, 135, 305, 312, 255, 405), shafts (e.g., 825, 826, 828), and housing components (e.g., 434, 435, 136, 137, 829, 416, 600, 435). The exploded view illustrates the relative positions and assembly sequence of these parts.

## 'D' & 'G' Brake Assy

**G**

Diagram G shows an exploded view of a mechanical assembly. The components are numbered as follows: 561 (a small circular washer), 831 (a large cylindrical component with internal teeth), 138 (a small circular washer), 139 (a small circular washer), 832 (a small cylindrical component), 414 (a small cylindrical component with a central hole), 313 (a large circular gear), 306 (a large circular gear), 256 (a large circular gear), 306 (a large circular gear), 406 (a large circular gear), and 406 (a large circular gear). The components are arranged in a linear sequence, with some components (831, 414, 313, 306, 256, 306, 406) highlighted in blue.

835  
'F' Brake Assy

## Rear Planetary Assy

# ZF 5HP19 HL (PORSCHE) Code: 1060 050 xxx

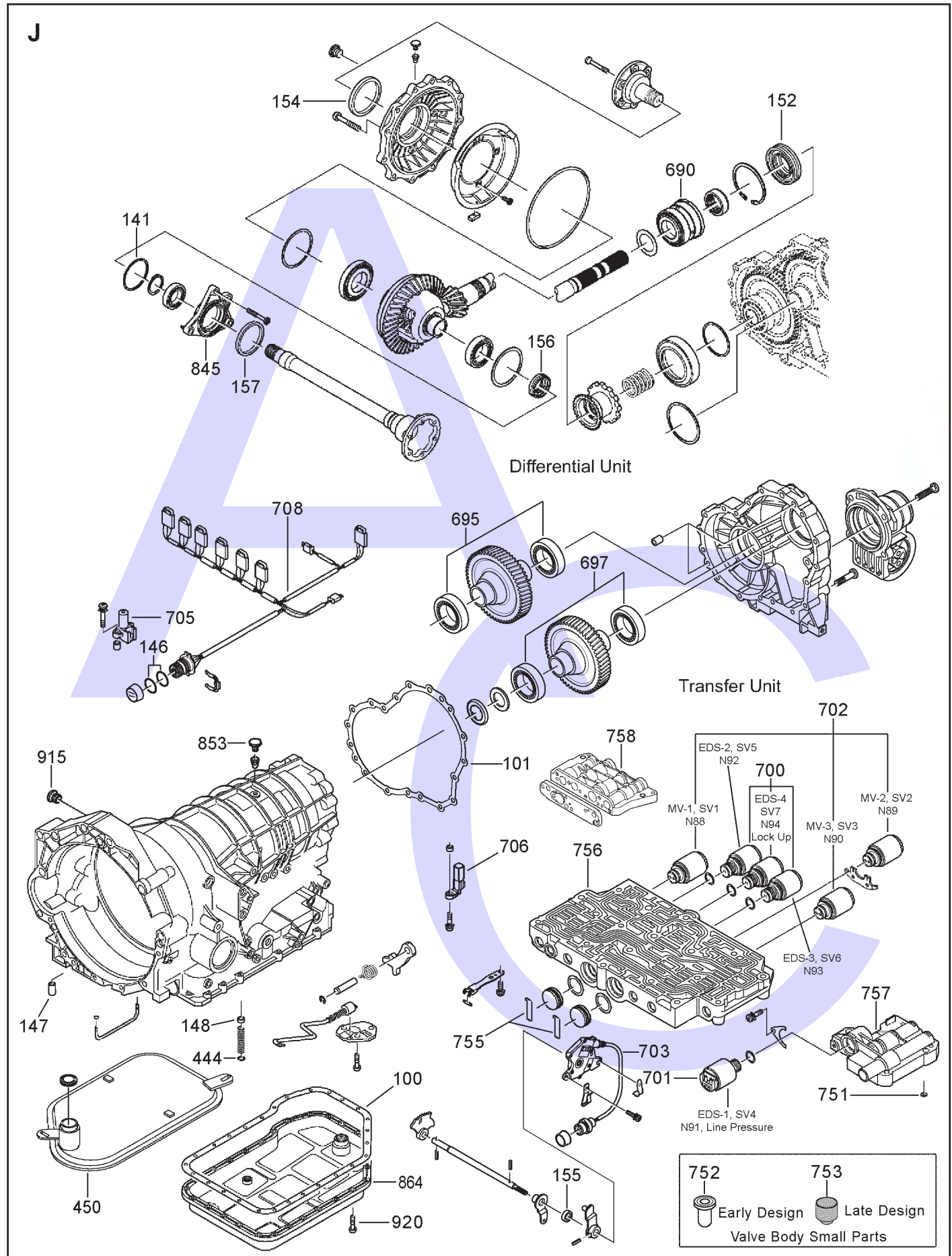
## 5 SPEED FWD (Full Electronic Control)



AUTOMATIC CHOICE



THE AUTOMATIC TRANSMISSION PARTS WAREHOUSE





# ZF 5HP19 HL (PORSCHE) Code: 1060 050 xxx

## 5 SPEED FWD (Full Electronic Control)



AUTOMATIC CHOICE



THE AUTOMATIC TRANSMISSION PARTS WAREHOUSE

ILL NO.	DESCRIPTION	YEARS	QTY	PART NO
<b>KITS</b>				
Kit	Overhaul Kit (OEM)..... All		1	5HP19.OHK04
Kit	Supplement Kit (Precision) (For Use With Standard Audi Kit) ..... All		1	5HP19.OHK53
<b>GASKETS</b>				
100J	Pan Gasket (OEM)..... All		1	5HP19.GAS03
100J	Pan Gasket (AM) ..... All		1	5HP19.GAS53
101J	Transfer Case to Main Case ..... All		1	5HP19.GAS07
102A	Pump Bolt Sealing Washer ..... All		9	5HP18.GAS04
NI	Valve Body Gasket..... All		1	5HP19.GAS05
<b>RUBBER COMPONENTS</b>				
120A	Pump to Stator 'O' Ring ..... All		1	5HP19.OR01
121A	Stator to Case 'O' Ring ..... All		1	5HP19.OR03
122A	'O' Ring, 'C' Brake Outer ..... All		1	5HP19.OR11
123A	'O' Ring, 'C' Brake Inner ..... All		1	5HP18.OR05
125B	'O' Ring, 'B' Clutch Inner ..... All		1	5HP19.OR08
126B	'O' Ring, 'B' Clutch Outer ..... All		1	6HP26.OR04
127C	'O' Ring, 'A' Clutch Outer ..... All		1	5HP19.OR17
128C	'O' Ring, 'A' Clutch Inner ..... All		1	5HP19.OR16
131D	'O' Ring, 'E' Clutch Damper ..... All		1	5HP19.OR09
134F	'O' Ring, 'D' Clutch Outer ..... All		1	5HP19.OR11
135F	'O' Ring, 'D' Clutch Inner ..... All		1	5HP19.OR12
136F	'O' Ring, 'G' Brake Inner ..... All		1	5HP19.OR08
137F	'O' Ring, 'G' Brake Outer ..... All		1	5HP19.OR07
138G	'O' Ring, 'F' Brake Inner ..... All		1	5HP19.OR09
139G	'O' Ring, 'F' Clutch Outer ..... All		1	5HP19.OR08
141J	'O' Ring, Speedo Drive Housing to Case All		1	5HP19.OR10
146J	Case Connector 'O' Ring ..... All		2	5HP18.OR03
147J	V. Body to Case Sealing Rubber (Long)..... All		5	5HP19.RUB01
148J	V. Body to Case Sealing Rubber (Short)..... All		3	5HP19.RUB02
<b>METAL CLAD SEALS</b>				
150A	Converter Seal ..... All		1	4HP18.MCS01
152J	Transfer Shaft Seal (OEM) (37.50mm x 88mm x 16mm)..... All		1	5HP19.MCS04
152J	Transfer Shaft Seal (AM) (37.50mm x 88mm x 16mm)..... All		1	5HP19.MCS54
154J	Left Hand Outer D. Shaft Seal (60mm x 80mm x 7.50mm)..... All		1	5HP19.MCS07
155J	Selector Shaft Seal (12mm x 22mm x 5mm) ..... All		1	4HP20.MCS08
156J	Output Seal, Inner (OE) (34mm x 46/48mm x 12/16mm) All		1	5HP19.MCS11
156J	Output Seal, Inner (AM) (34mm x 46/48mm x 12/16mm) All		1	5HP19.MCS61
157J	Left Hand Outer D. Shaft Seal (55mm x 42mm x 8mm)..... All		1	5HP19.MCS15
<b>MOULDED PISTONS</b>				
<b>SEALING RINGS</b>				
200A	Stator Support (Large) ..... All		2	5HP19.SSR01
201A	Stator Support (Small) ..... All		1	5HP19.SSR02
202D	Input Shaft Front (Small)..... All		1	5HP19.SSR03
203D	Input Shaft Rear (Large) ..... All		1	5HP18.SSR04
204F	'D'/G' Carrier..... All		2	5HP18.SSR06

ILL NO.	DESCRIPTION	YEARS	QTY	PART NO
<b>FRICTION PLATES</b>				
Kit	Friction Kit ..... All		1	5HP19.FRK02
Kit	Friction Kit (Alto) ..... All		1	5HP19.FRK51
250A	'C' Brake..... All		5	5HP19.FRP02
250A	'C' Brake (Alto)..... All		5	5HP19.FRP53
251B	'B' Clutch ..... All		2	5HP19.FRP01
251B	'B' Clutch (Alto) ..... All		2	5HP19.FRP52
252C	'A' Clutch ..... All		5	4HP18.FRP03
252C	'A' Clutch (Alto) ..... All		5	5HP19.FRP51
253D	'E' Clutch ..... All		5	5HP19.FRP04
253D	'E' Clutch (Alto) ..... All		5	5HP19.FRP54
254F	'D' Brake..... All		5	4HP18.FRP02
254F	'D' Brake (Alto)..... All		5	5HP19.FRP51
255F	'G' Brake ..... All		4	5HP18.FRP03
255F	'G' Brake (Alto)..... All		4	5HP19.FRP55
256G	'F' Clutch ..... All		5	5HP18.FRP03
256G	'F' Clutch (Alto)..... All		5	5HP19.FRP55
<b>STEEL PLATES</b>				
Kit	Steel Plate Kit ..... All		1	5HP19.STK02
Kit	Steel Plate Kit (Alto)..... All		1	5HP19.STK51
300A	'C' Brake..... All		5	4HP20.STP05
301B	'B' Clutch ..... All		2	5HP19.STP04
302C	'A' Clutch ..... All		5	5HP19.STP02
303D	'E' Clutch ..... All		5	5HP19.STP05
304F	'D' Brake..... All		6	5HP19.STP02
305F	'G' Brake ..... All		4	5HP19.STP07
306G	'F' Clutch ..... All		5	5HP19.STP03
307A	'C' Brake Waved Steel ..... All		1	5HP19.STP10
308B	'B' Clutch Waved Steel..... All		1	5HP19.STP11
309C	'A' Clutch Waved Steel..... All		1	5HP18.STP04
310D	'E' Clutch Waved Steel..... All		1	5HP19.STP13
311F	'D' Brake Waved Steel ..... All		1	5HP19.STP18
312F	'G' Brake Waved Steel ..... All		1	5HP19.STP17
313G	'F' Clutch Waved Steel ..... All		1	5HP19.STP17
<b>PRESSURE PLATES</b>				
400A	Pressure Plate 'C' Brake (4.00mm)..... All		1	5HP19.PP01
401B	Pressure Plate 'B' Clutch ..... All		1	5HP19.PP02
402C	Pressure Plate 'A' Clutch ..... All		1	5HP19.PP03
403D	Pressure Plate 'E' Clutch ..... All		1	5HP19.PP04
404F	Pressure Plate 'D' Brake ..... All		1	5HP19.PP03
405F	Pressure Plate 'G' Brake..... All		1	5HP19.PP06
406G	Pressure Plate 'F' Brake ..... All		1	5HP19.STP03
<b>SPRINGS &amp; CIRCLIPS</b>				
410A	Diaphragm Spring 'C' Brake..... All		1	5HP19.DIA01
411B	Diaphragm Spring 'B' Clutch ..... All		1	5HP19.DIA02
412C	Diaphragm Spring 'A' Clutch ..... All		1	5HP19.DIA03
413D	Diaphragm Spring 'E' Clutch ..... All		1	5HP19.DIA04
414G	Diaphragm Spring 'F' Clutch ..... All		1	5HP19.DIA05
415F	Diaphragm Spring 'D' Brake..... All		1	5HP19.DIA06
416F	Diaphragm Spring 'G' Brake ..... All		1	5HP19.DIA07
430A	Circlip - 'C' Brake Retaining (2.80mm)		AR	5HP19.CIR01
430A	Circlip - 'C' Brake Retaining (2.60mm)		AR	5HP19.CIR02
430A	Circlip - 'C' Brake Retaining (2.40mm)		AR	5HP19.CIR03
430A	Circlip - 'C' Brake Retaining (2.20mm)		AR	5HP19.CIR04
430A	Circlip - 'C' Brake Retaining (2.00mm)		AR	5HP19.CIR05
430A	Circlip - 'C' Brake Retaining (1.80mm)		AR	5HP19.CIR06
430A	Circlip - 'C' Brake Retaining (1.60mm)		AR	5HP19.CIR07
430A	Circlip - 'C' Brake Retaining (1.40mm)		AR	5HP19.CIR08
431B	Circlip - 'B' Clutch Retaining (2.00mm)		AR	5HP19.CIR09
431B	Circlip - 'B' Clutch Retaining (1.80mm)		AR	5HP19.CIR10

# ZF 5HP19 HL (PORSCHE) Code: 1060 050 xxx

## 5 SPEED FWD (Full Electronic Control)



AUTOMATIC CHOICE



THE AUTOMATIC TRANSMISSION PARTS WAREHOUSE

ILL NO.	DESCRIPTION	YEARS	QTY	PART NO
<b>SPRINGS &amp; CIRCLIPS Cont...</b>				
431B	Circlip - 'B' Clutch Retaining (1.60mm)	AR		<b>5HP19.CIR11</b>
431B	Circlip - 'B' Clutch Retaining (1.40mm)	AR		<b>5HP19.CIR12</b>
431B	Circlip - 'B' Clutch Retaining (1.20mm)	AR		<b>5HP19.CIR13</b>
431B	Circlip - 'B' Clutch Retaining (1.00mm)	AR		<b>5HP19.CIR14</b>
432C	Circlip - 'A' Clutch Retaining (2.80mm)	AR		<b>5HP19.CIR15</b>
432C	Circlip - 'A' Clutch Retaining (2.60mm)	AR		<b>5HP19.CIR16</b>
432C	Circlip - 'A' Clutch Retaining (2.40mm)	AR		<b>5HP19.CIR17</b>
432C	Circlip - 'A' Clutch Retaining (2.20mm)	AR		<b>5HP19.CIR18</b>
432C	Circlip - 'A' Clutch Retaining (2.00mm)	AR		<b>5HP19.CIR19</b>
432C	Circlip - 'A' Clutch Retaining (1.80mm)	AR		<b>5HP19.CIR20</b>
432C	Circlip - 'A' Clutch Retaining (1.60mm)	AR		<b>5HP19.CIR21</b>
432C	Circlip - 'A' Clutch Retaining (1.40mm)	AR		<b>5HP19.CIR22</b>
432C	Circlip - 'A' Clutch Retaining (1.20mm)	AR		<b>5HP19.CIR23</b>
432C	Circlip - 'A' Clutch Retaining (1.00mm)	AR		<b>5HP19.CIR24</b>
433D	Circlip - 'E' Clutch Retaining (2.80mm)	AR		<b>5HP19.CIR25</b>
433D	Circlip - 'E' Clutch Retaining (2.60mm)	AR		<b>5HP19.CIR26</b>
433D	Circlip - 'E' Clutch Retaining (2.40mm)	AR		<b>5HP19.CIR27</b>
433D	Circlip - 'E' Clutch Retaining (2.20mm)	AR		<b>5HP19.CIR28</b>
433D	Circlip - 'E' Clutch Retaining (2.00mm)	AR		<b>5HP19.CIR29</b>
433D	Circlip - 'E' Clutch Retaining (1.80mm)	AR		<b>5HP19.CIR30</b>
433D	Circlip - 'E' Clutch Retaining (1.60mm)	AR		<b>5HP19.CIR31</b>
433D	Circlip - 'E' Clutch Retaining (1.50mm)	AR		<b>5HP19.CIR32</b>
433D	Circlip - 'E' Clutch Retaining (1.40mm)	AR		<b>5HP19.CIR33</b>
433D	Circlip - 'E' Clutch Retaining (1.20mm)	AR		<b>5HP19.CIR34</b>
433D	Circlip - 'E' Clutch Retaining (1.00mm)	AR		<b>5HP19.CIR35</b>
434F	Circlip - 'D' Brake Retaining (4.20mm)	AR		<b>5HP19.CIR36</b>
434F	Circlip - 'D' Brake Retaining (4.00mm)	AR		<b>5HP19.CIR37</b>
435F	'G' Brake Thrust Ret Circlip..... All		1	<b>5HP18.CIR02</b>
444J	V.B. to Case			
	Rubber Seal Retaining Clip..... All		3	<b>5HP19.CIR38</b>
<b>FILTERS</b>				
450J	Filter, Oil Pick Up ..... All		1	<b>5HP19.FIL05</b>
NI	Valve Body Oil Screen ..... All		1	<b>5HP19.FIL04</b>
<b>BUSHINGS</b>				
Kit	Bushing Kit..... All		1	<b>5HP19.BK01</b>
550A	Pump Body Bush (Standard Size) All		1	<b>5HP19.BUS11</b>
550A	Pump Body Bush (Oversize OD) (Pump requires machining) (Sonnax® <a href="#">Click here for Info</a> ) ... All		1	<b>5HP19.BUS01</b>
550A	Pump Body Bush (Oversize OD & Undersize ID) (Pump requires machining & Bush requires machining after fitting to fit converter neck) (Sonnax® <a href="#">Click here for Info</a> ) .. All		1	<b>5HP19.BUS02</b>
555D	Bushing, 'E' Clutch Rear (15mm OD x 12mm ID x 10.20mm) ..... All		1	<b>5HP19.BUS03</b>
556E	Bushing, Sun Gear Shaft (15mm OD x 12mm ID x 10.20mm) ..... All		1	<b>5HP19.BUS03</b>
561G	'F' Clutch Drum (Bronze)..... All		1	<b>5HP18.BUS05</b>
561G	'F' Clutch Drum (Sonnax)..... All		1	<b>5HP18.BUS07</b>
<b>THRUST WASHERS &amp; BEARINGS</b>				
600F	'G' Brake Thrust Plate ..... All		1	<b>5HP18.THW01</b>
650A	Bearing Radial, Rear of Stator Support..... All		1	<b>5HP19.TOR02</b>
651D	Bearing Radial, 'A' to 'B' Clutch. All		1	<b>5HP19.TOR03</b>
654E	Bearing Radial, Sun Gear Shaft to Sun Gear Shell..... All		1	<b>5HP19.BE04</b>
656E	Bearing Kit, Shaft to Carrier ..... All		1	<b>5HP18.TK05</b>
690J	Pinion Bearing Assy ..... All		1	<b>5HP19.BE05</b>
695J	Bearing, Helical Gear (Transfer Unit) (Front & Rear)..... All		2	<b>4HP20.BE02</b>

ILL NO.	DESCRIPTION	YEARS	QTY	PART NO
<b>ELECTRICAL COMPONENTS</b>				
697J	Bearing, Pinion Gear (Transfer Unit) (Front & Rear) ..... All		2	<b>4HP20.BE02</b>
700J	Solenoid (PWM)..... All		3	<b>4HP20.SOL02</b>
701J	Solenoid Main Pressure Reg (1060 050 003, 004)..... All		1	<b>5HP19.SOL04</b>
701J	Solenoid Main Pressure Reg (1060 050 002)..... All		1	<b>4HP20.SOL03</b>
702J	Solenoid Shift (On Off) ..... All		3	<b>5HP30.SOL02</b>
703J	Range Sensor ..... All		1	<b>5HP19.ELE10</b>
705J	Turbine Speed Sensor (Inductive) (Fits on Valve Body)..... All		1	<b>5HP18.ELE01</b>
706J	Output Speed Sensor (Inductive) (Fits on Casing)..... All		1	<b>4HP20.ELE01</b>
708J	Valve Body Loom ..... All		1	<b>5HP19.ELE12</b>
<b>VALVE BODY PARTS</b>				
751J	Orifice Disc/Valve (Pressure Reg Body) ..... All		1	<b>5HP19.VA07</b>
752J	Damper Plug (Rubber) (Early Design) ..... All		3	<b>5HP19.ACC01</b>
753J	Damper Plug (Aluminium) (Late Design) ..... All		3	<b>5HP19.ACC02</b>
755J	Retainer Valve Body End Plug.. All		2	<b>5HP19.RET03</b>
756J	Lower Rear Valve Body Housing ..... All		1	<b>5HP19.VB02</b>
757J	Pressure Regulator Housing ..... All		1	<b>5HP19.VB12</b>
758J	Valve Body Housing, Upper Front ..... All		1	<b>5HP19.VB13</b>
NI	Pressure Regulator Spring..... All		1	<b>5HP19.SPR04</b>
Kit	Pressure Regulator Valve (Early E17 Valve Body) (Requires Toolkit 5HP19.VA03) (Sonnax® <a href="#">Click Here for Info</a> ) ... All		1	<b>5HP19.VA06</b>
Kit	Toolkit for 5HP19.VA06 (Sonnax®)..... All		1	<b>5HP19.VA03</b>
Kit	Pressure Regulator Valve (Late E18.2 Valve Body) (Requires Toolkit 5HP19.VA05) (Sonnax® <a href="#">Click Here for Info</a> ) ... All		1	<b>5HP19.VA04</b>
Kit	Toolkit for 5HP19.VA04 (Sonnax®)..... All		1	<b>5HP19.VA05</b>
Kit	Replacement Reamer for Toolkit 5HP19.VA05 (Sonnax®)..... All		1	<b>5HP19.VA18</b>
NI	Valve Body Oil Screen ..... All		1	<b>5HP19.FIL04</b>
NI	Encapsulated Plastic Ball Valve (Fit in Rear of Front Lower Valve Body) ..... All		1	<b>4HP22.VA01</b>
NI	'F' Accumulator Spring ..... All		1	<b>4HP14.SPR23</b>
NI	Housing, Valve Body Lower Front ..... All		1	<b>5HP19.VA02</b>
NI	Orifice Disc/Valve 9In Vave Body) (1.00mm)..... All		AR	<b>4HP18.VA03</b>
NI	Accumulator Piston (Small Fits in Duct Plate) ..... All		3	<b>5HP24.VA06</b>
Kit	Pressure Regulator Valve (Type 2 Valve Body) (TransGo® <a href="#">Click Here for Info</a> ) . All		1	<b>5HP19.VA19</b>

# ZF 5HP19 HL (PORSCHE) Code: 1060 050 xxx

## 5 SPEED FWD (Full Electronic Control)



AUTOMATIC CHOICE



THE AUTOMATIC TRANSMISSION PARTS WAREHOUSE

ILL NO.	DESCRIPTION	YEARS	QTY	PART NO
<b>HARDWARE</b>				
800A	Short Pump Assy .....	All	1	5HP19.PUM01
803A	Pump Wear Plate.....	All	1	5HP19.SP01
805A	'C' Brake Cylinder (5 Lined Plates).....	All	1	5HP19.DRU10
807A	Retainer, 'C' Brake Diaphragm..	All	1	5HP19.RET04
808B	'B' Clutch Cylinder.....	All	1	5HP19.DRU11
810B	Retainer, 'B' Clutch Diaphragm.	All	1	5HP19.RET04
811C	'A' Clutch Cylinder (5Plate) .....	All	1	5HP19.DRU03
813C	Retainer 'A' Clutch .....	All	1	5HP19.RET01
815D	'E' Clutch Cylinder.....	All	1	5HP19.DRU13
816D	Piston, 'E' Clutch .....	All	1	5HP19.PIS04
818E	Intermediate Shaft.....	All	1	5HP18.SH02
820E	Drive Shell/Sun Gear .....	All	1	5HP19.POT02
825F	Carrier & OWC Inner.....	All	1	5HP19.OWC02
826F	O.W.C. Assy 'D'/G' Carrier.....	All	1	5HP19.OWC01
827F	Piston 'D' Brake (aluminium).....	All	1	5HP18.PIS03
828F	'D'/G' Cylinder (5/4 Plates) .....	All	1	5HP19.DRU06
829F	Piston 'G' Brake (aluminium).....	All	1	5HP19.PIS02
831G	'F' Clutch Cylinder (5 Plate) (Modified *) .....	All	1	5HP19.DRU04
832G	Piston 'F' Clutch .....	All	1	5HP19.PIS01
835G	'F' Clutch Assembly (Complete)	All	1	5HP19.DRU09
845J	Housing, L/H Axle Seal .....	All	1	5HP19.COV02
853J	Plastic Breather Cap .....	All	1	5HP19.CAP01
864J	Oil Pan .....	All	1	5HP19.PAN01
<p>* Modified Items May Require Replacement of Extra Components To Make Them Compatible With Existing Transmissions, Please Furnish Transmission Code and Ask Us To Check Compatibility</p>				
<b>SPECIAL ITEMS</b>				
900A	Washer - Oil Dam (Fits Behind T.C. Seal) .....	All	1	5HP19.THW01
902A	Bolt, Stator (M6 x 65mm) .....	All	9	5HP19.NUT08
903A	Bolt, Pump to Stator (48mm) ....	All	1	5HP19.NUT04
904A	Bolt, Pump to Stator (40mm) ....	All	8	5HP19.NUT03
915J	Screw Plug, (M10x1).....	All	1	4HP20.PLU01
920J	Bolt, Oil Pan to Case.....	All	27	5HP19.NUT05
NI	Repair Manual (OEM) .....			5HP19.MAN02
NI	Factory Repair Manual (ATSG). All			5HP19.MAN04
NI	LifeGuardFluid5 x 1Ltr Bottle (Esso LT71141) .....	All	AR	OIL.50
NI	LifeGuardFluid5 x 20Ltr Canister (Esso LT71141) .....	All	AR	OIL.51
NI	LifeGuardFluid5 x 209Ltr Drum (Esso LT71141) .....	All	AR	OIL.52