

ZF 4HP24A (AUDI) Code: 1043 040 xxx

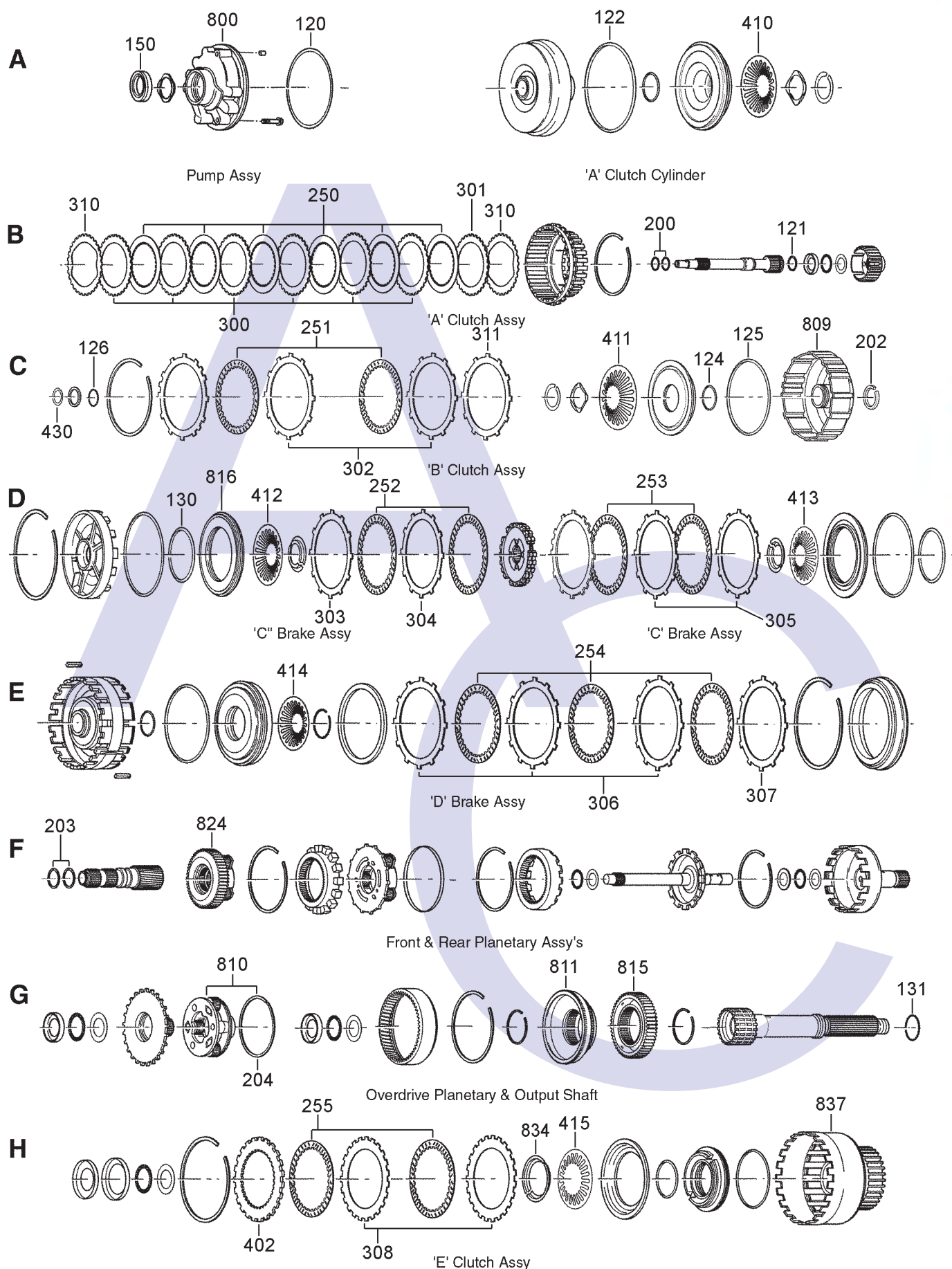
4 SPEED 4WD (Electronic Control)



AUTOMATIC CHOICE



THE AUTOMATIC TRANSMISSION PARTS WAREHOUSE



ZF 4HP24A (AUDI) Code: 1043 040 xxx

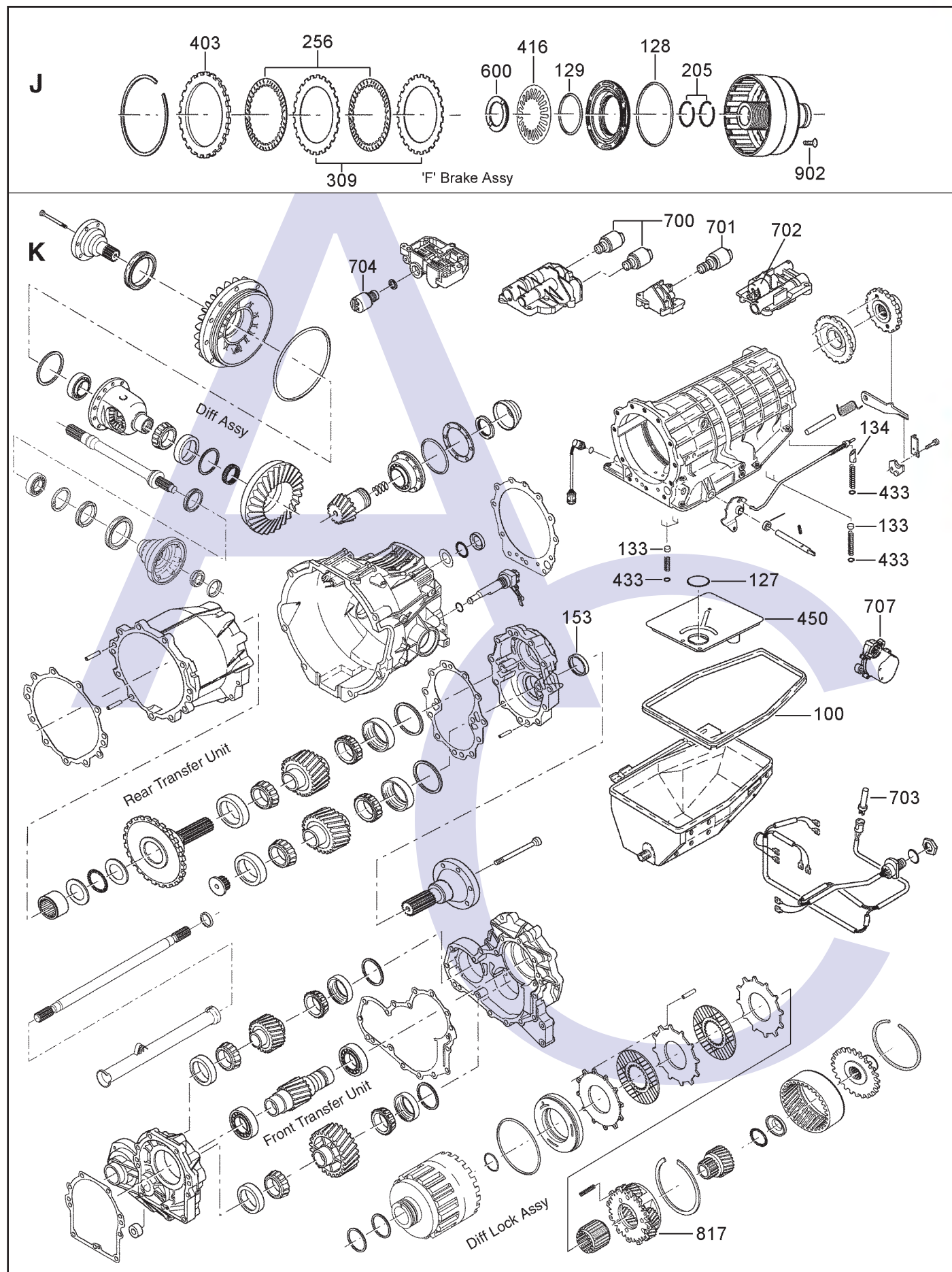
4 SPEED 4WD (Electronic Control)



AUTOMATIC CHOICE



THE AUTOMATIC TRANSMISSION PARTS WAREHOUSE



ZF 4HP24A (AUDI) Code: 1043 040 xxx

4 SPEED 4WD (Electronic Control)



AUTOMATIC CHOICE



THE AUTOMATIC TRANSMISSION PARTS WAREHOUSE

ILL NO.	DESCRIPTION	YEARS	QTY	PART NO
KITS				
Kit	Overhaul Kit (OEM).....	88-ON	1	4HP24A.OHK01
Kit	Overhaul Kit (Precision) (Transmission & Transfer Case) 88-ON	88-ON	1	4HP24.OHK51
GASKETS				
100K	Pan Gasket	88-ON	1	4HP22.GAS01
NI	Valve Body Gasket.....	88-ON	1	4HP22.GAS08
RUBBER COMPONENTS				
120A	Pump 'O' Ring.....	88-ON	1	4HP24.OR01
121B	Input Shaft 'O' Ring.....	88-ON	1	4HP22.OR14
122A	'A' Clutch Outer 'O' Ring.....	88-ON	1	4HP22.OR01
124C	'B' Clutch Inner 'O' Ring	88-ON	1	4HP22.OR12
125C	'B' Clutch Outer 'O' Ring	88-ON	1	4HP22.OR06
125C	'B' Clutch Outer 'O' Ring (Codes: 1043 040 014, 019, 020, 022)	88-ON	1	5HP19.OR09
126C	'B' Clutch to Sun Shaft 'O' Ring.....	88-ON	1	4HP22.OR14
127K	Filter to Valve Body 'O' Ring	88-ON	1	4HP22.OR11
128J	'F' Brake Outer 'O' Ring	88-ON	1	4HP22.OR04
129J	'F' Brake Inner 'O' Ring	88-ON	1	4HP22.OR07
130D	'C1' Brake Inner 'O' Ring.....	88-ON	1	4HP22.OR05
131G	Output Shaft 'O' Ring	88-ON	1	4HP22.OR15
133K	V. Body to Case Seal	88-ON	6	4HP22.RUB01
134K	V. Body to Case Seal Angled ...	88-ON	1	4HP22.RUB02
METAL CLAD SEALS				
150A	Front Pump Body (OEM)	88-ON	1	3HP22.MCS01
150A	Front Pump Body (AM)	88-ON	1	3HP22.MCS51
152K	Selector Shaft	88-ON	1	3HP22.MCS03
153K	Output Seal	88-ON	1	5HP24.MCS02
SEALING RINGS				
200B	Input Shaft.....	88-ON	2	5HP18.SSR03
202C	'B' Clutch Drum	88-ON	1	4HP22.SSR02
203F	Sun Gear Shaft	88-ON	2	4HP22.SSR03
204G	Planetary Set	88-ON	1	4HP22.SSR07
205J	'F' Brake to 'E' Clutch	88-ON	2	4HP22.SSR04
FRICITION PLATES				
Kit	Friction Plate.....	88-ON	1	4HP24.FRK02
Kit	Friction Plate (Alto) (Without Tranfer Box.....	88-ON	1	4HP24.FRK51
Kit	Friction Plate (Alto) (With Tranfer Box.....	88-ON	1	4HP24.FRK52
250B	'A' Clutch (Forward)	88-ON	6	4HP22.FRP11
251C	'B' Clutch (Third & Reverse).....	88-ON	5	3HP22.FRP22
252D	'C1' Brake (Intermediate & Overrun)	88-ON	2	3HP22.FRP23
253D	'C' Brake (Intermediate)	88-ON	3	3HP22.FRP23
254E	'D' Clutch.....	88-ON	5	4HP24.FRP22
254E	'D' Clutch (Alto)	88-ON	5	4HP24.FRP51
255H	'E' Clutch (Overdrive Clutch).....	88-ON	4	4HP22.FRP11
256J	'F' Brake (Overdrive Brake).....	88-ON	4	4HP22.FRP11
256J	'F' Brake (OD Brake) (Alto)	88-ON	4	4HP22.FRP52

ILL NO.	DESCRIPTION	YEARS	QTY	PART NO
STEEL PLATES				
Kit	Steel Plate Kit	88-ON	1	4HP24.STK01
Kit	Steel Plate (Alto) (With Tranfer Box.....	88-ON	1	4HP24.STK51
Kit	Steel Plate (Alto) (Without Tranfer Box.....	88-ON	1	4HP24.STK52
300B	'A' Clutch (2.10mm).....	88-ON	5	4HP22.STP01
301B	'A' Clutch Selective (2.10mm) ...	88-ON	1	4HP22.STP01
301B	'A' Clutch Selective (1.50mm) ...	88-ON	1	4HP22.STP02
302C	'B' Clutch (2.10mm).....	88-ON	5	3HP22.STP04
303D	'C1' Brake (1.80mm)	88-ON	1	3HP22.STP03
304D	'C1' Brake (2.10mm)	88-ON	1	3HP22.STP04
305D	'C' Brake (2.10mm)	88-ON	3	3HP22.STP04
306E	'D' Brake (1.20mm)	88-ON	5	4HP24.STP01
307E	'D' Brake Selective (2.10mm).....	88-ON	1	4HP24.STP04
307E	'D' Brake Selective (1.80mm).....	88-ON	1	4HP24.STP03
307E	'D' Brake Selective (1.50mm).....	88-ON	1	4HP24.STP02
307E	'D' Brake Selective (1.20mm).....	88-ON	1	4HP24.STP01
308H	'E' Clutch (1.50mm).....	88-ON	5	4HP22.STP02
309J	'F' Brake (2.10mm).....	88-ON	4	4HP22.STP01
310B	'A' Clutch Waved.....	88-ON	2	4HP22.STP05
311C	'B' Clutch Waved.....	88-ON	1	4HP22.STP06
PRESSURE PLATES				
402H	'E' Clutch	88-ON	1	4HP22.PP05
403J	'F' Brake	88-ON	1	4HP22.PP06
SPRINGS & CIRCLIPS				
410A	'A' Clutch Diaphragm Spring.....	88-ON	1	4HP24.DIA01
411C	'B' Clutch Diaphragm Spring.....	88-ON	1	4HP22.DIA05
412D	'C1' Brake Diaphragm Spring.....	88-ON	1	4HP22.DIA06
413D	'C' Brake Diaphragm Spring.....	88-ON	1	4HP22.DIA06
414E	'D' Brake Diaphragm Spring.....	88-ON	1	4HP22.DIA03
415H	'E' Clutch Diaphragm Spring.....	88-ON	1	4HP22.DIA04
416J	'F' Brake Diaphragm Spring.....	88-ON	1	4HP22.DIA02
430C	Circlip 'B' Clutch to Sun Shaft ...	88-ON	1	4HP22.CIR01
433K	Circlip Case sealing Rubber Compression Spring	88-ON	8	4HP22.CIR03
FILTERS				
450K	Pan Filter.....	88-ON	1	4HP24.FIL01
BUSHINGS				
550A	Front Pump Body Bush (17mm Wide)	88-ON	1	4HP22.BUS01
THRUST WASHERS & BEARINGS				
600J	'F' Brake Retainig 'C' Clip.....	88-ON	1	4HP22.THW01

ZF 4HP24A (AUDI) Code: 1043 040 xxx

4 SPEED 4WD (Electronic Control)



AUTOMATIC CHOICE



THE AUTOMATIC TRANSMISSION PARTS WAREHOUSE

ILL NO.	DESCRIPTION	YEARS	QTY	PART NO
ELECTRICAL COMPONENTS				
700K	Shift Solenoid.....	88-ON	2	5HP18.SOL01
701K	Lock Up Solenoid.....	88-ON	1	5HP18.SOL03
702K	Pressure Control Solenoid.....	88-ON	1	5HP18.SOL02
703K	Inductive Speed Sensor (Except Codes: 1043 040 026 & 1043 040 027).....	88-ON	1	4HP22.ELE01
704K	Transfer Case Solenoid	88-ON	1	4HP22.SOL05
707K	Range Switch (Codes: 1043 040 014, 019, 020, 022, 025, 026, 027)	88-ON	1	4HP24A.ELE01
VALVE BODY COMPONENTS				
NI	Valve Body Plastic Check Ball (6.50mm).....	88-ON	AR	4HP22.BALL01
NI	Valve Body Plastic Check Ball (4.50mm).....	88-ON	AR	4HP22.BALL02
NI	Encapsulated Plastic Ball Valve Fits in Rear of Lower Valve Body	88-ON	1	4HP22.VA01
NI	'C' Accumulator Spring (Codes; 1043 040 014,019, 020, 022, 025, 026, 027)	88-ON	1	4HP14.SPR23
NI	'E' Accumulator Spring (Codes 1043 040 025, 026, 027)	88-ON	1	4HP22.SPR11
HARD PARTS				
800A	Pump Body & Gears	88-ON	1	4HP24.PUM03
809C	'B' Clutch Cylinder (4 Plate)	88-ON	1	4HP22.DRU09
810G	Over Drive Planet Assembly	87-ON	1	4HP22.PL01
811G	Overdrive One Way Clutch Assy.....	87-ON	1	4HP22.OWC02
815G	Splined Hub Overdrive One Way Clutch	87-ON	1	4HP22.HUB02
816D	'C1' Brake Piston.....	87-ON	1	4HP24.PIS03
817K	Transfer Case Planetary	88-ON	1	4HP24A.PL01
824F	Planetary Assembly (4 Pinion) ..	87-ON	1	4HP24.PL02
834H	Retainer 'E' Clutch Diaphragm..	88-ON	1	4HP22.CIR05
837H	'E' Clutch Drum (Codes 1043 040 014, 019, 020, 022, 025, 026, 027)	91-ON	1	4HP22.DRU10
SPECIAL ITEMS				
902J	'F' Brake to Case Screw.....	83-ON	10	4HP22.NUT01
NI	Rebuild Manual (OEM) (Special Order).....	88-ON		4HP24A.MAN01

ILL NO.	DESCRIPTION	YEARS	QTY	PART NO