

TH 700-R4 (4L60) 82-93

4 SPEED RWD (Electronic & Hydraulic Control)

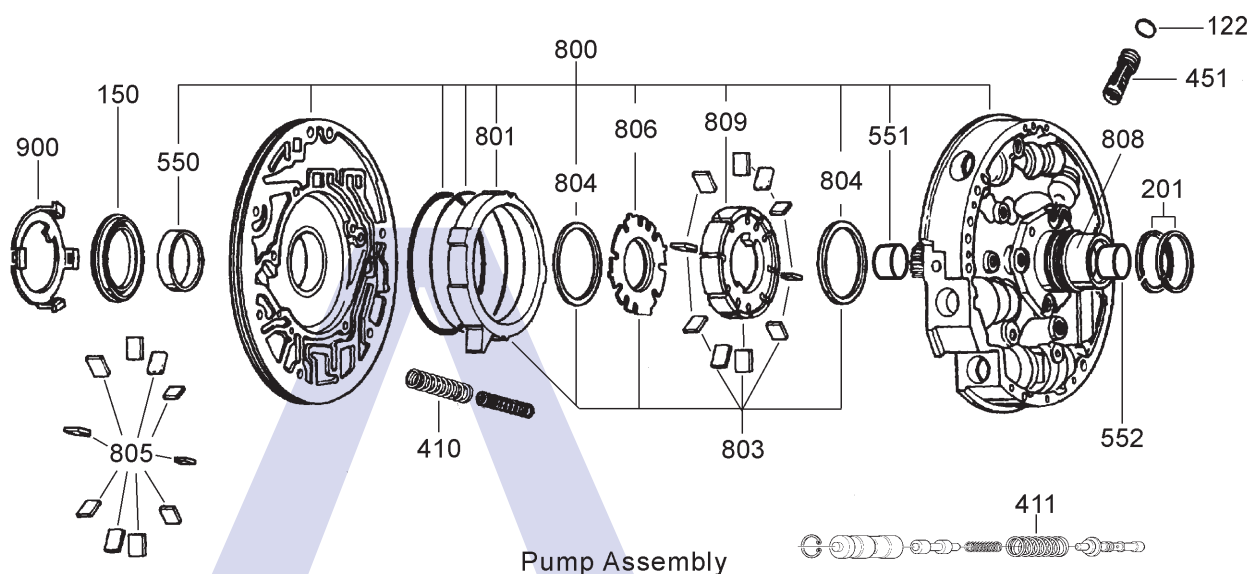


AUTOMATIC CHOICE



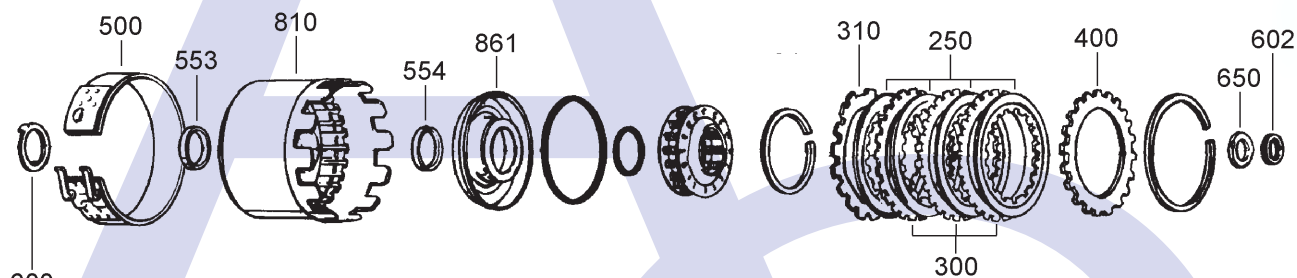
THE AUTOMATIC TRANSMISSION PARTS WAREHOUSE

A



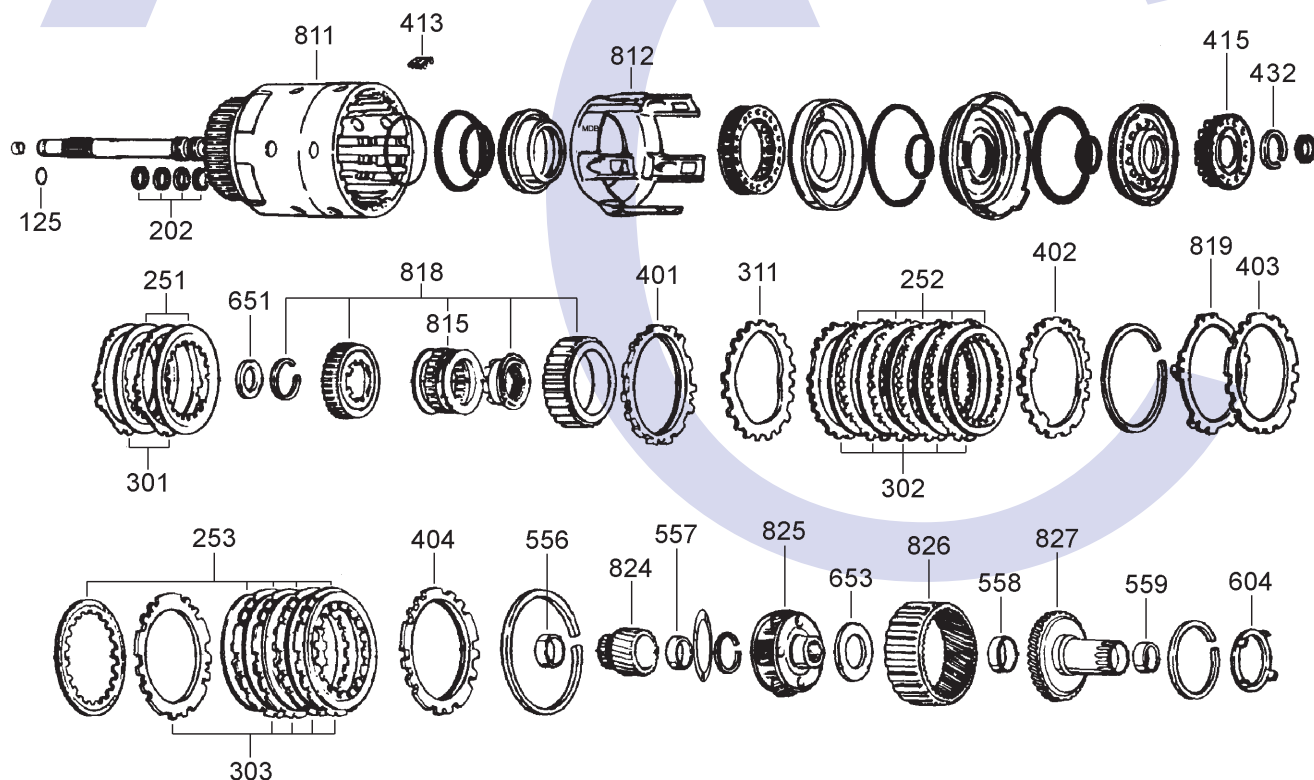
Pump Assembly

B



Reverse Input Clutch

C



Coast, Forward and 3-4 Clutch

TH 700-R4 (4L60) 82-93

4 SPEED RWD (Electronic & Hydraulic Control)

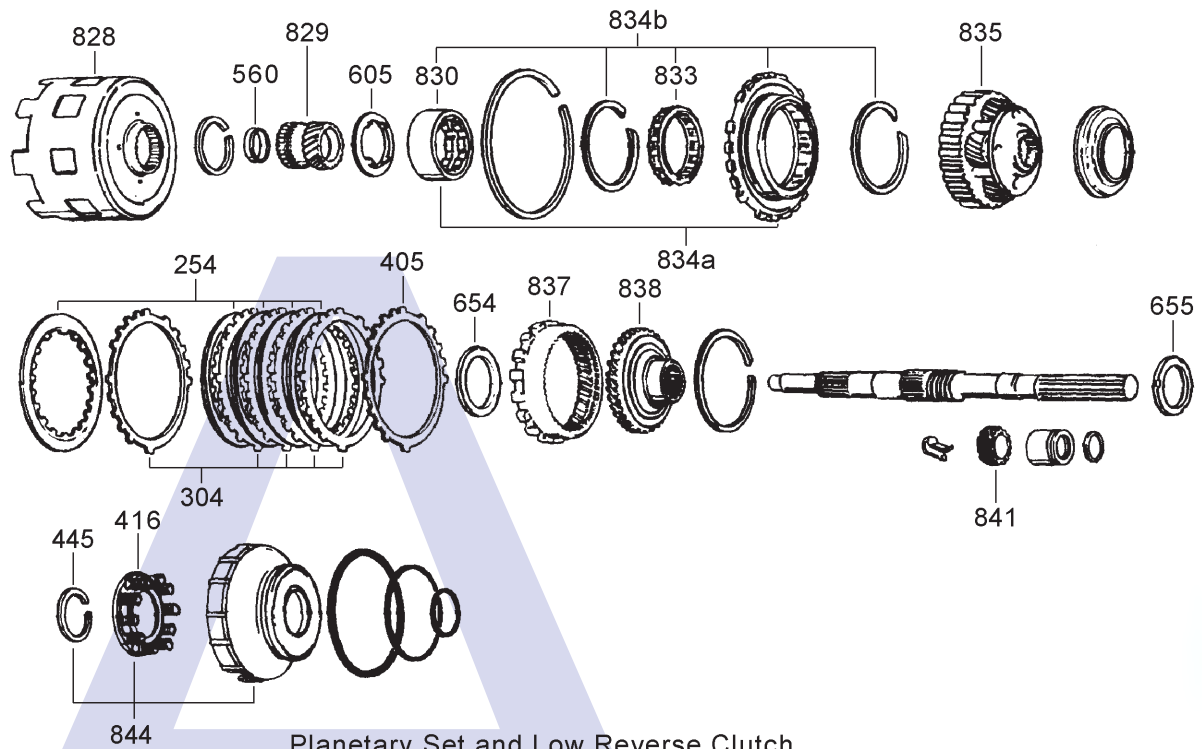


AUTOMATIC CHOICE



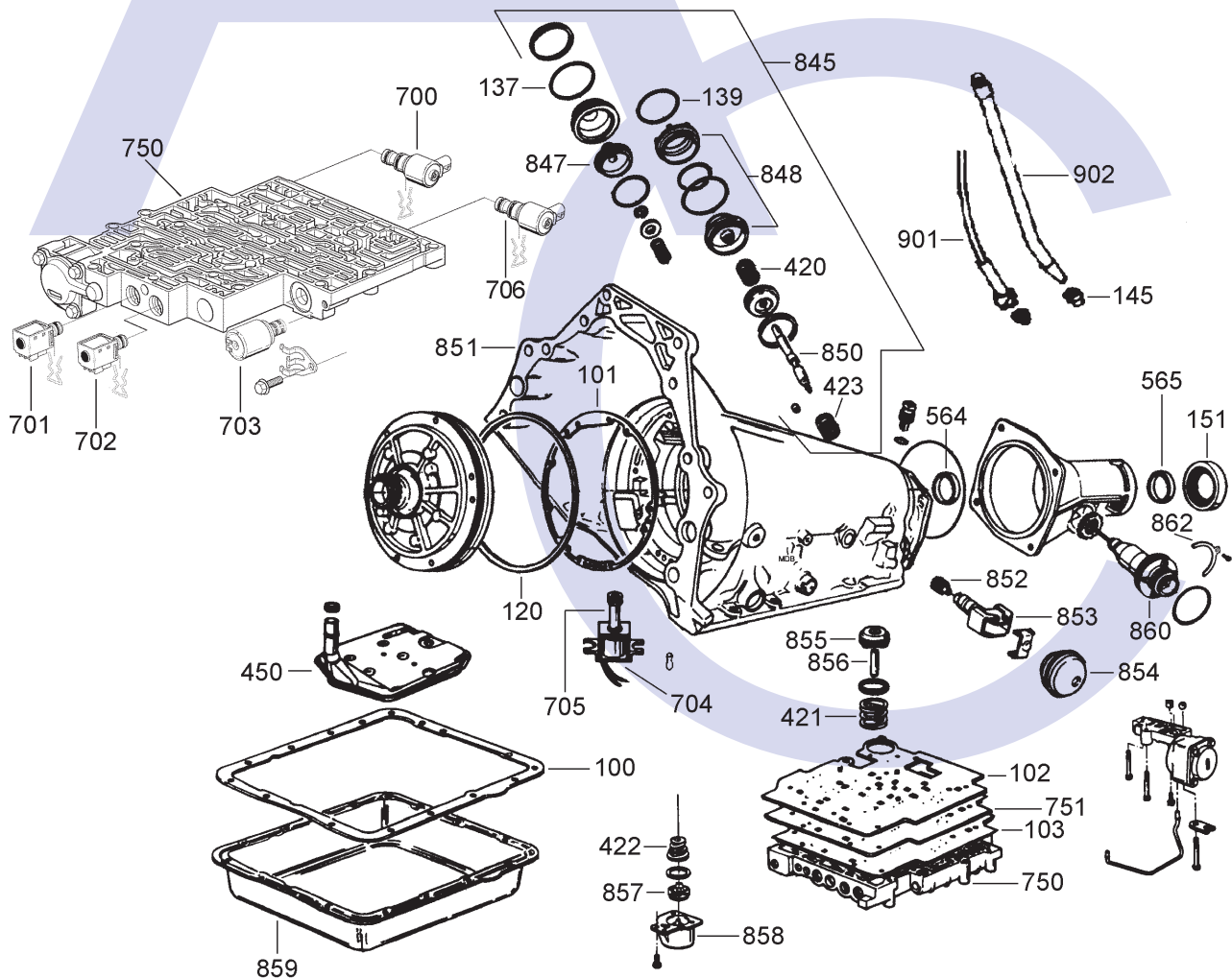
THE AUTOMATIC TRANSMISSION PARTS WAREHOUSE

D



Planetary Set and Low Reverse Clutch

E



Case, Servo and Governor

TH 700-R4 (4L60) 82-93

4 SPEED RWD (Electronic & Hydraulic Control)



AUTOMATIC CHOICE



THE AUTOMATIC TRANSMISSION PARTS WAREHOUSE

ILL NO.	DESCRIPTION	YEARS	QTY	PART NO
KITS				
Kit	Super Overhaul Kit W/O Aux Valve Body (4L60).....	85-E87	1	TH700.SOHK02
Kit	Overhaul Kit (Transtec) (4L60).....	82-93	1	TH700.OHK01
Kit	Overhaul Kit (Precision) (4L60).....	82-93	1	TH700.OHK51
Kit	Sonnax "Sure Cure" Transmission Reconditioning Kit 4L60	82-93	1	TH700.SCK01
GASKETS				
100E	Pan Gasket (Cork)	82-93	1	TH700.GAS01
100E	Pan Gasket (Fibre).....	82-93	1	TH700.GAS10
101E	Front Pump to Case Gasket	82-E83	1	TH700.GAS03
101E	Front Pump to Case Gasket	L83-ON	1	TH700.GAS02
102E	Upper Valve Body 4L60	82-86	1	TH700.GAS06
102E	Upper Valve Body 4L60	87-93	1	TH700.GAS07
103E	Lower Valve Body 4L60	82-86	1	TH700.GAS04
103E	Lower Valve Body 4L60	87-93	1	TH700.GAS05
<i>Main Case to Transfer Box Gasket see Appropriate Transfer Box Section</i>				
RUBBER COMPONENTS				
Kit	Replacement Seal Kit for Sonnax 4th Gear "Super Hold" Servo (TH700.ACC11)	82-93	1	TH700.SRK05
120E	Pump to Case Lathe Cut Seal ..	82-93	1	TH400.SQR01
122A	Pump Screen 'O' Ring.....	82-93	1	DPO.OR08
125C	Turbine Shaft 'O' Ring (Green Coated)	82-93	1	TH125.OR01
137E	O-Ring, Servo Cover (Outer Blue)	82-93	1	TH700.OR01
139E	O-Ring, Servo Cover (Inner Red).....	82-93	1	TH700.OR03
145E	Filler Tube to Case Multi Lip Seal (Replaces O Ring)	82-93	1	TH125.LIP03
NI	'O' Ring, Pump Bolt.....	L86-93	7	TH700.OR02
NI	2nd Apply Servo Saver Seal (Sonnax®, 5 per bag)	82-93		4L60E.SL01
NI	Servo Pisto Bore Seal.....	82-93	1	4L60E.MCS05
METAL CLAD SEALS				
150A	Front Pump Seal	82-93	1	TH700.MCS01
151E	Extension Housing.....	82-93	1	TH180.MCS02
NI	Selector Shaft	82-93	1	TH180.MCS03
MOULDED PISTONS				
SEALING RINGS				
Kit	Sealing Ring Kit (Combo Kit)	82-ON	1	TH700.SRK01
201A	Stator Support Rear (Scarf Cut Teflon®)	82-93	2	TH700.SSR02
202C	Turbine Shaft Sealing Ring (Solid Teflon®)	82-93	4	TH700.SSR01

ILL NO.	DESCRIPTION	YEARS	QTY	PART NO
FRICITION & STEEL KITS				
Kit	Friction & Steel Plate, Full Kit (Alto) (High Perf with PowerPack®) ...	87-ON	1	TH700.FRK66
Kit	Friction & Steel Plate (Alto) (High Perf Red Eagle®)	82-84	1	TH700.CK60
Kit	Friction & Steel Plate (Alto) (High Perf Red Eagle®)	84-E87	1	TH700.CK61
Kit	Friction & Steel Plate (Alto) (H.Perf With 3-4 Powerpack)	84-E87	1	TH700.CK62
Kit	3rd & 4th Clutch Hi Performance Kit (Borg Warner) With Friction & Steel Plates	82-ON	1	TH700.CK01
Kit	3rd & 4th Clutch Improver Kit (Alto) With Friction & Steel Plates	82-ON	1	TH700.CK02
Kit	3rd & 4th Clutch Hi Performance Kit (Alto) With Friction & Steel Plates	82-ON	1	TH700.CK03
Kit	Friction & Steel Kit, 3/4 Clutch Z Pak (7 Friction, 7 Steel Kit & 2 Press. Plates) (Raybestos®)	82-ON	1	TH700.CK04
FRICITION PLATES				
Kit	Friction Plate (4L60).....	82-86	1	TH700.FRK03
Kit	Friction Plate (4L60) (Alto)	85-E87	1	TH700.FRK51
Kit	Friction Plate (4L60) (Without 4th Clutch)	82-86	1	TH700.FRK04
Kit	Friction Plate (4L60/4L60E)	87-ON	1	TH700.FRK01
Kit	Friction Plate (4L60/4L60E) (Alto With Heg Frictions)	87-ON	1	TH700.FRK62
Kit	Friction Plate (4L60) (Alto)	82-84	1	TH700.FRK54
Kit	Friction Plate (4L60) (Alto)	85-93	1	TH700.FRK53
Kit	Friction Plate (4L60) (Alto) (With Heg Frictions)	85-93	1	TH700.FRK63
Kit	Friction Plate (Without 4th Clutch)	87-93	1	TH700.FRK02
250B	Reverse Input (153mm OD x 2.00mm x 41T) ..	82-E87	4	TH700.FRP02
250B	Reverse Input (153mm OD x 1.80mm x 41T) ..	L87-93	4	TH700.FRP07
251C	Overrun Clutch (128mm OD x 2.00mm x 36T)....	82-93	2	TH700.FRP03
252C	Forward Clutch (135mm OD x 2.00mm x 41T) ..	82-E85	5	TH700.FRP04
252C	Forward Clutch (135mm OD x 1.75mm x 41T) ..	L85-93	5	TH700.FRP06
253C	3rd & 4th Clutch 4L60 (146mm OD x 2.00mm x 20T) ..	82-93	6	TH700.FRP05
253C	3rd & 4th Clutch Hi Capacity (146mm OD x 1.60mm x 20T) ..	82-93	AR	TH700.FRP08
253C	3rd & 4th Clutch Hi Energy (146mm OD x 2.00mm x 20T) ..	82-93	6	TH700.FRP10
254D	Low & Reverse Brake (164mm OD x 2.20mm x 25T) ..	82-93	5	TH350.FRP05
STEEL PLATES				
Kit	Steel Plate 4L60.....	82-86	1	TH700.STK03
Kit	Steel Plate 4L60 (Alto)	82-84	1	TH700.STK53
Kit	Steel Plate 4L60 (Alto)	85-E87	1	TH700.STK51
Kit	Steel Plate 4L60 (Without 4th Clutch)	82-86	1	TH700.STK04
Kit	Steel Plate 4L60.....	87-93	1	TH700.STK01
Kit	Steel Plate 4L60 (Alto)	85-92	1	TH700.STK52
Kit	Steel Plate 4L60 (Without 4th Clutch)	87-93	1	TH700.STK02
Kit	3rd & 4th Clutch Improver Kit (Borg Warner)	82-93	1	TH700.CK01
Kit	3rd & 4th Clutch Improver Kit (Alto)	82-93	1	TH700.CK02

TH 700-R4 (4L60) 82-93

4 SPEED RWD (Electronic & Hydraulic Control)



AUTOMATIC CHOICE



THE AUTOMATIC TRANSMISSION PARTS WAREHOUSE

ILL NO.	DESCRIPTION	YEARS	QTY	PART NO
STEEL PLATES Cont...				
300B	Reverse Input (129mm ID x 2.00mm x 36T)	82-93	3	TH700.STP01
300B	Reverse Input Oversize (Alto) (129mm ID x 2.28mm x 36T)	82-93	AR	TH700.STP15
301C	Overrun Clutch (108mm ID x 2.30mm x 10T)	82-93	2	TH700.STP11
302C	Forward Flat 4L60 (108mm ID x 2.00mm x 20T)	82-84	4	TH700.STP02
302C	Forward Flat 4L60/4L60E (108mm ID x 2.30mm x 20T) -	85-93	4-5	TH700.STP03
303C	3rd & 4th Clutch (127mm ID x 1.93mm x 20T)	82-1/93	5	TH700.STP09
303C	3rd & 4th Clutch (Alto) (127mm ID x 1.93mm x 20T)	82-1/93	5	TH700.STP14
303C	3rd & 4th Clutch (Use With TH700.FRP08) (127mm ID x 1.50mm x 20T)	82-4/93	AR	TH700.STP10
304D	Low & Reverse (145mm ID x 1.73mm x 17T)	82-93	5	TH350.STP03
310B	Rev Input Waved 4L60 (129mm ID x 2.00mm x 36T)	82-E87	1	TH700.STP06
310B	Rev Input Waved 4L60 (Alto) (129mm ID x 2.00mm x 36T)	84-87	1	TH700.STP17
310B	Rev Input Dished (129mm ID x 1.30mm x 36T)	L87-93	1	TH700.STP08
310B	Rev Input Dished (129mm ID x 1.80mm x 36T)	L87-93	1	4L60E.STP05
310B	Rev Input Dished (129mm ID x 2.20mm x 36T)	L87-93	1	TH700.STP07
311C	Forward Waved (108mm ID x 1.80mm x 20T)	84-93	1	TH700.STP04
PRESSURE & SPACER PLATES				
400B	Reverse Input Clutch (6.7-6.9mm)	82-93	1	TH700.PP15
401C	Apply Plate, Forward Clutch (6.44mm) 4L60.....	82-86	1	TH700.PP07
401C	Apply Plate, Forward Clutch 4L60 (1.95mm).....	82-93	1	TH700.PP06
401C	Apply Plate, Forward Clutch (4.32mm).....	87-93	1	TH700.PP08
402C	Forward Clutch (5.87mm).....	82-93	1	TH700.PP16
402C	Forward Clutch (6.43mm).....	82-93	1	TH700.PP14
403C	Apply Plate, 3/4 Clutch (3.30mm Flat).....	82-93	1	TH700.PP04
403C	Apply Plate, 3/4 Clutch (4.00mm Bevelled).....	87-93	1	TH700.PP05
404C	3/4 Clutch 4L60 (5.00mm - 5.25mm Cast# 3).....	82-93	1	TH700.PP01
404C	3/4 Clutch (5.65mm).....	82-93	1	TH700.PP11
404C	3/4 Clutch (6.0-6.25mm Cast# 2).....	82-93	1	TH700.PP12
404C	3/4 Clutch (7.0-7.25mm Cast# 1).....	82-93	1	TH700.PP13
405D	Spacer Plate, Low/ Rev Brake (1.25mm Thick)	82-93	1	TH700.PP02
405D	Spacer Plate, Low/ Rev Brake (2.26mm Thick)	82-93	1	TH700.PP03
405D	Spacer Plate, Low/ Rev Brake (2.46mm Thick)	82-93	1	TH700.PP18
405D	Spacer Plate, Low/ Rev Brake (3.17mm Thick)	82-93	1	TH700.PP19

ILL NO.	DESCRIPTION	YEARS	QTY	PART NO
SPRINGS & CIRCLIPS				
Kit	Circlip Set (All Circlips)	82-93	1	TH700.CIR10
410A	Pump Slide Spring, High Output (Sonnax®, Replaces 2 OEM Springs) (5 Per Pack)	82-93	1	TH700.SPR04
411A	Elevated Pressure Regulator Spring (Sonnax® Click here for Info) ...	82-93	1	TH700.SPR10
NI	Spacer, Pump Slide Spring (Performance) (Sonnax® Click here for Info) ...	82-93	1	4L60E.SP01
NI	Spring, Fits Under Slide Pin.....	82-93	1	TH700.PUM24
413C	Release Spring Assyembly 3-4 Clutch Load.....	82-93	5	TH700.SPR09
416D	Return Spring Assembly Low & Reverse Clutch	82-93	1	TH700.SPR06
420E	Cushion Spring, Servo Apply Pin.....	82-93	1	TH700.SPR03
421E	3-4 Accumulator Spring (Purple 5 Pack) (Sonnax® Click here for Info) ...	82-93	1	4L60E.SPR02
421E	Performance 3-4 Accumulator Spring (Sonnax)	82-93	1	TH700.ACC13
422E	Spring, 1-2 Accumulator (Purple) Outer	82-93	1	TH700.ACC03
422E	1-2 Accumulator Spring (Purple 5 Pack) (Sonnax® Click here for Info) ...	82-93	1	4L60E.SPR02
422E	Spring, 1-2 Accumulator (Red) Outer	82-93	1	TH700.ACC04
422E	Spring, 1-2 Accumulator (White) Outer	82-93	1	TH700.ACC05
422E	Spring, 1-2 Accumulator (Orange, Cone Shaped) Outer..	82-93	1	TH700.ACC06
422E	Spring, 1-2 Accumulator (Yellow) Outer	82-93	1	TH700.ACC07
422E	Spring, 1-2 Accumulator (Green) Outer.....	82-93	1	TH700.ACC08
422E	Performance 1-2 Accumulator Spring (Sonnax)	82-93	1	TH700.ACC13
423E	Return Spring, Band Apply Servo (Silver 30mm Dia x 25mm Long 3 Coils)	82-93	1	TH700.SPR07
NI	Release Spring Assembly, 3-4 Clutch Load.....	82-93	1	TH700.SPR01
NI	TV Helper Spring 4L60	82-93	1	TH700.SPR02
445D	Circlip, Low & Reverse Clutch Spring Retainer	82-93	1	TH700.CIR01
FILTERS				
450E	Filter	82-86	1	TH2004R.FIL01
450E	Filter (Retro's All Early)	87-93	1	TH700.FIL01
451A	Screen, Pump 4L60	82-93	1	TH700.FIL03
NI	Governor & TCC Screen 4L60 (Fit in Casing Under V.B)	82-93	2	TH700.FIL02
BANDS				
500B	Second & Fourth Band (2 Tang) Retros All	82-93	1	TH700.BAN01
500B	Second & Fourth Band (Extra Wide 66.67mm)	82-93	1	TH700.BAN02
500B	Second & Fourth Band (Wide With Carbon Lining).....	82-93	1	TH700.BAN03
500B	Second & Fourth Band (Wide High Energy Lining)	82-93	1	TH700.BAN04
500B	Second & Fourth Band (Alto) (Heavy Duty Red Lining).....	82-93	1	TH700.BAN05

TH 700-R4 (4L60) 82-93

4 SPEED RWD (Electronic & Hydraulic Control)



AUTOMATIC CHOICE



THE AUTOMATIC TRANSMISSION PARTS WAREHOUSE

ILL NO.	DESCRIPTION	YEARS	QTY	PART NO
BUSHES				
Kit	Bush Kit (30 Spline)	82-93	1	TH700.BK01
Kit	Stator Bushings.....	82-93	1	TH700.BUS15
550A	Front Pump Bush (Babbitt)	82-93	1	TH700.BUS01
550A	Front Pump Bush (Dura Life)....	82-93	1	TH700.BUS03
551A	Stator (Front) 22.86mm ID.....	82-E84	1	TH700.BUS11
551A	Stator (Front) 25.40mm ID.....	L84-93	1	TH700.BUS06
552A	Stator (Rear) 11mm Wide	82-91	1	TH700.BUS04
553B	Reverse Input Housing (Front)...	82-93	1	TH700.BUS12
554B	Reverse Input Housing (Rear) ..	82-93	1	TH700.BUS13
556C	Input Sun Gear (Front).....	82-93	1	TH700.BUS07
557C	Input Sun Gear (Rear)	82-93	1	TH700.BUS07
558C	Reaction Carrier Shaft (Front)...	82-93	1	TH700.BUS08
559C	Reaction Carrier Shaft (Rear) ...	82-93	1	TH700.BUS09
560D	Reaction Sun Gear	82-93	1	TH700.BUS10
560D	Reaction Sun Gear (Wide) (Sonnax)	82-93	1	TH700.BUS14
564E	Case Bronze	82-93	1	TH700.BUS05
564E	Case Oversize (Sonnax).....	82-93	1	4L60E.BUS10
565E	Extension Housing Babbitt.....	82-93	1	TH700.BUS02
565E	Extension Housing (Teflon Coated)	82-93	1	4L60E.BUS09
THRUST WASHERS & BEARINGS				
Kit	Thrust Washer Kit	82-93	1	TH700.TWK01
Kit	Thrust Bearing Kit	82-93	1	TH700.TWK02
Kit	End Play Shim Kit (Sonnax Contains 10 x 0.38mm Shims for Adjusting Front End Play)	82-93	AR	TH700.TWK03
Kit	End Play Shim Kit (Sonnax Contains 10 x 0.254mm Shims for Adjusting Rear Unit End Play)	82-93	AR	TH700.TWK04
600B	Pump to Reverse Drum	82-93	1	TH700.THW01
604C	Reaction Shaft to Shell (Brass). ..	82-93	1	TH700.THW14
605D	Rear One Way Clutch Race To Driving Shell Washer.....	82-93	1	TH700.THW19
605D	Rear One Way Clutch Race To Driving Shell Washer (The Beast).....	82-93	1	TH700.THW03
650B	Stator Support to Input Drum Bearing.....	82-93	1	TH700.THW02
651C	Input Drum to Sun Gear.....	82-93	1	TH700.THW11
653C	Input Carrier to Reaction Shaft Bearing	82-93	1	TH700.THW18
654D	Rear Planet to Support	82-93	1	TH700.THW16
655D	Reaction Gear Support To Case Bearing	82-93	1	TH700.THW18
ELECTRICAL COMPONENTS				
704E	Solenoid, TCC Type 9 (Orange) (4L60).....	82-93	1	TH700.SOL04
704E	Solenoid, TCC Universal (Teckpack).....	82-93	1	TH700.SOL03
705E	Replacement TCC Solenoid Snout (Aluminium Non PWM Sonnax) ..	82-93	1	TH700.SOL05
Kit	Switch, 4th Gear Lock-Up Delay Kits (Superior®)	82-93	1	TH700.ELE10
NI	Switch, 4th Gear Pressure 4L60 1 Prong	82-93	1	TH700.ELE02
NI	Switch, TCC Signal 4L60 (1 Prong) (Normally Open).....	82-93	1	TH700.ELE03
NI	Switch, 4-3 Pulse 4L60 (On Valve Body, 2 Prong) (Normally Closed)	82-93	1	TH700.ELE04
NI	Switch, Temperature 4L60	82-93	1	TH700.ELE07
NI	Case Connector (3 Prong).....	82-93	1	TH700.ELE09

ILL NO.	DESCRIPTION	YEARS	QTY	PART NO
VALVE BODY PARTS				
751E	Plate, Valve Body (Stamp # BV) (All "B" Series Interchange).....	88-91	1	TH700.VBP01
751E	Plate, Valve Body (Stamp # BY) (All "B" Series Interchange).....	88-91	1	TH700.VB12
751E	Plate, Valve Body (Universal - Replaces All 4L60/700-R4's) (Transgo)	82-93	1	TH700.VB16
Kit	Valve Body Shift Kit®, 4L60 (Transgo Senior)	82-93	1	TH700.SK01
Kit	Valve Body Shift Kit®, 4L60 (Transgo Junior).....	82-93	1	TH700.SK02
Kit	Reprogramming Kit™, 700-R4 Hi-Perf & HD Automatic or Manual Shift (Transgo®).....	82-93	1	TH700.SK03
Kit	Upshift Sleeve, (Superior) (Full Throttle 3-4 Upshift) 4L60 .	82-93	1	TH700.VA18
Kit	TH700/4L60 Hydraulic Lock Up (Superior)	82-93	1	TH700.VA19
Kit	Kit, Lock-up In 4th Gear Only (In Valve Body) 4L60 (2 Valves, 1 Sleeve, 1 Spring)...	82-93	1	TH700.VA01
Kit	Pressure Regulator Valve Kit (Sonnax) 4L60E (Requires TH700.TOOL01).....	82-93	1	TH700.VA03
Kit	Throttle Valve & Plunger Kit (Sonnax) 4L60 "93"	82-93	1	TH700.VA14
Kit	Throttle Valve & Plunger Kit (Sonnax) 4L60 "94"	82-93	1	TH700.VA13
Kit	Throttle Valve & Plunger Kit (Sonnax) High Performance 4L60	82-93	1	TH700.VA15
Kit	Throttle Boost Valve & Sleeve Kit (Sonnax) 10.744mm Dia.....	82-93	1	TH700.VA17
Kit	Check Ball Repair Kit, Fixes 5 Valve Body Plate Holes Most w/ 1/4" Check Balls	82-93	1	TH700.VB11
Kit	Oversized Accumulator Pin & Reamer Kit 4L60 (Sonnax)	82-93	1	TH700.TOOL03
Kit	4-3 Sequence Valve Kit (TH700) (Sonnax™).....	82-93	1	TH700.VA21
Kit	Oversized Throttle Valve 4L60 (Sonnax, Requires Reamer (TH700.TOOL05)	82-93	1	TH700.VA16 TH700.TOOL05
Kit	Reamer For TH700.VA16	82-93		
NI	Pinless Forward Accumulator Piston (Sonnax®).....	82-93	1	TH700.ACC16
NI	Forward Accumulator Piston (Aluminium to Replace Plastic) .	82-93	1	TH700.ACC17
NI	TV Helper Spring 4L60	82-93	1	TH700.SPR02
NI	Reverse Boost Valve (O' Ring Type Sonnax)	82-93	1	TH700.VA02
NI	TCC Apply Valve (Sonnax) (4L60 & 4L60E Non PWM)	82-93	1	TH700.VA04
NI	Throttle Boost Valve 4L60 11.963mm Dia (Sonnax)	82-93	1	TH700.VA05
NI	Throttle Boost Valve 4L60 12.70mm Dia (Sonnax)	82-93	1	TH700.VA06
NI	Accumulator Valve Train Assy (8.00mm Dia Light Vehicles) (Sonnax)	82-93	1	TH700.VA07
NI	Accumulator Valve Train Assy (8.382mm Dia Medium Vehicles) (Sonnax)	82-93	1	TH700.VA08
NI	Accumulator Valve Train Assy (8.661mm Dia Heavy Vehicles) (Sonnax)	82-93	1	TH700.VA09
NI	Check Valve 3rd Accumulator (OEM) (Can be used with TH700.VA12). ..	82-93	1	TH700.VA10

TH 700-R4 (4L60) 82-93

4 SPEED RWD (Electronic & Hydraulic Control)



AUTOMATIC CHOICE



THE AUTOMATIC TRANSMISSION PARTS WAREHOUSE

ILL NO.	DESCRIPTION	YEARS	QTY	PART NO
VALVE BODY PARTS Cont...				
Kit	Check Valve, Servo Release Use with EO Check Valve TH700.VA10) (Sonnax@ Click here for Info) ... 82-93	1		TH700.VA12
NI	Plate Saver, (Inserts Between Accumulator Cover to Valve Body Plate)..... 82-93	1		TH700.VB10
NI	Valve & Bushing Assembly (TransGo@ Click Here for Info) . 82-93	1		TH700.VA22
Kit	Line Pressure Booster Kit (TH700 R4, 4L60) (Sonnax@ Click here for Info) ... 93-ON	1		TH700.VA23
HARD PARTS				
800A	Pump, Small (22.86mm) Input Shaft (Stator Cast # 031 or 025) (Body Cast # 380) 4L60 82-E84	1		TH700.PUM01
800A	Pump, Large (25.40mm) Input Shaft (Non Auxiliary Type) (Stator Cast # 025, 031, 304, or 570) (Body Cast # 132, 303, 380, or 732) (025 & 031 Stator Fits 380 Body) (570 & 304 Stator Fits 132,303,732 Body)..... L84-03/87	1		TH700.PUM05
800A	Pump, Large Input Shaft (Auxiliary Valve Body Type) (Stator Cast # 570, 596, 612, or 828) (Body Cast # 132, 303, or 732). 04/87-93	1		TH700.PUM07
802A	Rotor Kit, 10 Vane (17.95mm Rotor) (Heavy Duty). 82-93	1		TH700.PUM02
804A	Ring, Pump Rotor to Vane (Black Steel)..... 82-93	2		TH700.PUM03
805A	Vane Kit (Package of 13) 82-93	1		TH700.PUM08
806A	Rotor Guide, 7 Vane 4L60 82-93	1		TH700.PUM12
806A	Rotor Guide, 10 Vane 82-93	1		TH700.PUM16
807A	Vane & Ring Kit, (10 Vane, Heavy Duty)..... 82-93	1		TH700.PUM13
808A	Stator Support Shaft (Sonnax) (298mm Converter)..... 82-93	1		TH700.PUM14
809A	Rotor, 10 Vane 82-93	1		TH700.PUM15
NI	Pin, Pump Slide Pivot (Sonnax) 82-ON	1		TH700.PUM17
810B	Reverse Input (w/ Check Ball) (Steel) 82-02/87	1		TH700.DRU01
810B	Reverse Input (No Check Ball) (Has Round Oil Holes In Bore) . 03/87-93	1		TH700.DRU02
810B	Drum, Reverse Input (No Check Ball) (Large Feed Hole)..... 3/87-93	1		4L60E.DRU01
810B	Drum Assy, Reverse Input (Replacement Kit) 82-93	1		TH700.DRU04
811C	Input & Shaft w/ Pilot, (Exc 2.8L or 4 Cyl) (298mm/ 30 Spl Converter)..... 87-93	1		TH700.DRU03
811C	Input Housing Kit with Heavy Duty Input Shaft (298mm/ 30 Spl Converter) (Sonnax@ Click Here for Info) ... 87-93	1		4L60E.DRU05
811C	Input & Shaft no Pilot, (2.8L & 4 Cyl) (245mm/ 27 Spl Converter)..... 82-93	1		TH700.DRU06
812C	Apply Ring, 3-4 Clutch (5 Fingers)... 82-93	1		TH700.RET06
Kit	Input Drum Reinforcment Sleeve, Seal & Piston Kit (Sonnax@ Click Here for Info) ... 82-ON	1		4L60E.PIS06
815C	Forward Sprag (26 Element)..... L82-86	1		TH180.OWC01
815C	Sprag, Forward Clutch (29 Elements, Dual Cage)..... 87-93	1		TH700.OWC04
818C	Sprag Assembly, Forward Clutch (29 Elements, Includes Sprag).. 87-93	1		TH700.OWC16
819C	Retainer, 3-4 Clutch 4 Tab (Tin) 4L60..... 82-93	1		TH700.RET04

ILL NO.	DESCRIPTION	YEARS	QTY	PART NO
HARD PARTS Cont...				
824C	Sun Gear, Input (Front)	L82-93	1	TH700.SUN01
825C	Front Planetary (w/ Batwing Washers) (4 Pinion).....	82-93	1	TH700.PL01
825C	Front Planetary (5 Pinion, Retro Fits All)	82-93	1	TH700.PL09
826C	Ring Gear, Front Planet (34.92mm Long Clutch Spline) .	82-93	1	TH700.PL07
827C	Hub w/ Shaft, Reaction Carrier (4L60).....	82-93	1	TH700.PL03
828D	Shell, Reaction Sun (Std) (Washer Type).....	82-93	1	TH700.POT01
828D	Shell, Reaction Sun (Hardened) (Washer Type).....	82-93	1	TH700.POT02
829D	Sun Gear, Reaction (Rear)	82-93	1	TH700.SUN02
830D	Inner Race, Low/Rev OWC.....	86-93	1	TH700.OWC05
833D	Sprag, Low/ Reverse	82-86	1	TH350.OWC01
833D	Sprag, Low/ Reverse (Wide Plastic Cage)	86-93	1	TH700.OWC01
834aD	Inner & Outer Races Low/Rev Late Wide Type	86-93	1	TH700.OWC15
834bD	Centre Support Assy Late Wide Sprag Type	86-93	1	TH700.SUP01
835D	Rear Planetary (with Bat Wing Washers & with Oil Slinger) (Can Use TH700.PL06)	82-93	1	TH700.PL05
835D	Rear Planetary (with Bat Wing Washers without Oil Slinger) (Can Use TH700.PL05)	82-93	1	TH700.PL06
835D	Rear Planetary (5 Pinion) (Retrofits)	82-93	1	TH700.PL08
NI	Repair Kit, Rear Planetary (Sonnax® Click here for Info) ...	82-93	1	TH700.PL11
837D	Ring Gear, Rear (Hardened).....	82-93	1	TH700.PL02
838D	Hub, Support Internal Reaction Gear Late (Cut For Oil Slinger) .	82-93	1	TH700.PL04
841D	Reluctor Ring Speed Sensor (40Teeth).....	82-93	1	TH700.GE02
844D	Reverse Piston Kit (Exc 2.8)	2/87-93	1	TH700.PIS04
845E	Servo Assembly, 2-4 (Cast D758 # 8642093) (Corvette) High Output.....	82-93	1	TH700.SER01
845E	Servo Assembly, 2-4 (Cast # 553) Medium Output.....	82-93	1	TH700.SER02
845E	Servo Assembly, 2-4 (Cast # 554) Low Output.....	82-93	1	TH700.SER03
847E	Piston, 4th Servo (Super Hold) (Sonnax®).....	82-93	1	TH700.ACC11
Kit	Replacement Seal Kit for Sonnax 4th Gear "Super Hold" Servo (TH700.SER04)	82-93	1	TH700.SRK05
848E	2nd Gear Super Hold Servo Assy (Sonnax®).....	82-93	1	TH700.ACC19
848E	2nd Gear Small Size Servo.....	82-93	1	TH700.SER08
848E	2nd Gear Super Servo (Superior ®)	82-93	1	TH700.SER07
850E	Pin, 2nd Apply (1 Ring)	82-93	AR	TH700.PIN01
850E	Pin, 2nd Apply (2 Ring)	82-93	AR	TH700.PIN02
850E	Pin, 2nd Apply (3 Ring, & 1 Wide Band).....	82-93	AR	TH700.PIN03
851E	Main Case 4X4 TH700 R4 Non Aux V.B. (Not 2.8L or 4.3L)	82-93	1	TH700.CAS01
852E	Kit, Governor Gear 4L60.....	82-93	1	TH700.GOV01
853E	Governor, w/ 4mm Square Weight (Petrol 6 & 8 Cyl.) 4L60.....	82-93	1	TH700.GOV02
853E	Governor, w/ 4.57mm Square Weight (Diesel) 4L60.....	82-93	1	TH700.GOV03
853E	Governor, w/ 2.74mm Square Weight (Petrol 8 Cyl.) 4L60	82-93	1	TH700.GOV04

TH 700-R4 (4L60) 82-93

4 SPEED RWD (Electronic & Hydraulic Control)



AUTOMATIC CHOICE



THE AUTOMATIC TRANSMISSION PARTS WAREHOUSE

ILL NO.	DESCRIPTION	YEARS	QTY	PART NO
HARD PARTS Cont...				
853E	Governor, w/ 1.5mm Pointed Weight (Z-28/Corvette) 4L60.....	82-93	1	TH700.GOV05
854E	Cover, Governor.....	82-93	1	TH700.COV01
855E	Repair Kit, 3-4 Accumulator (Repair Sleeve, Piston & Pin) (Sonnax)	82-93	1	TH700.SL01
856E	Pin & Reamer Kit 1-2 & 3-4 Accumulator (10 Pins & 1 Reamer) 4L60	82-93	AR	TH700.TOOL03
856E	Pin, 1-2 & 3-4 Accumulator (Oversize) (Requires Reamer see TH700.TOOL03) (Sonnax Pack of 4) 4L60	82-93	AR	TH700.PIN04
858E	Cover, 1-2 Accumulator (4L60).....	82-93	1	TH700.ACC15
859E	Cooler, Transmission Pan Type (Derafe).....	82-93	1	TH700.PAN02
860E	Housing, Speedo Driven Gear (40 - 45 Teeth).....	82-93	1	TH700.GE03
861B	Piston, Reverse Input Clutch (Aluminium 3 Plate Units)	82-93	1	TH700.PIS01
862E	Retaining Bracket, Speedometer Gear Housing	82-93	1	TH700.RET05
NI	Piston Kit, 1-2 & 3-4 Accumulator (7.87mm Pin Dia) (Exc 2.8L).....	82-93	1	TH700.ACC02
NI	Kit, 1-2 & 3-4 Pin less Accumulator Piston (Sonnax) ...	82-93	1	TH700.ACC14
NI	Detent/Selector Shaft.....	82-93	1	4L60E.SH01
NI	Second Apply Servo Kit (Sonnax ®).....	82-93	1	TH700.SER06
MISCELLANEOUS COMPONENTS				
900A	Retainer, (Front Seal Lock)	82-ON	1	TH700.RET03
901E	Throttle Cable, Universal (Fitzall)	82-93	1	TH700.CAB01
902E	Filler Tube & Dip Stick, Fitz All (Teckpak)	82-ON	1	TH700.TUB01
NI	'Tear Drop' Clip, Throttle Cable End.....	82-93	1	TH700.CAB03
NI	Shortened Throttle Cable Link ..	82-93	1	TH700.LIN01
NI	Capsule, Reverse Piston (Package of 10).....	82-93	AR	TH700.CAP01
NI	Throttle Cable Repair Kit.....	82-93	1	TH700.CAB04
NI	Inner Throttle Cable Repair Kit .	82-93	1	TH700.CAB05
NI	Capsule w/ Ck Ball, Input Drum (Fits In Turbine Shaft)	82-93	1	TH700.CAP02
NI	Clip, Retaining Governor Cover (4L60).....	82-93	1	TH700.RET02
NI	Capsule w/ Ck Ball, Under Low/ Reverse Piston	82-93	1	TH700.VA11
NI	Check Valve, Servo Release (Sonnax)	82-93	1	TH700.VA12
NI	Plastic Case Breather	82-93	1	TH700.BRE01
TOOLS & MANUALS				
NI	ATSG Rebuild Manual (4L60).....	82-86		TH700.MAN01
NI	ATSG Rebuild Manual (4L60).....	87-93		TH700.MAN02
NI	ATSG Update Manual (4L60).....	89-ON		TH700.MAN03

[Click here to view special tools for this transmission](#)

ILL NO.	DESCRIPTION	YEARS	QTY	PART NO
---------	-------------	-------	-----	---------