

# MITSUBISHI R4A-51, R5A51, V4A-51, V5A-51

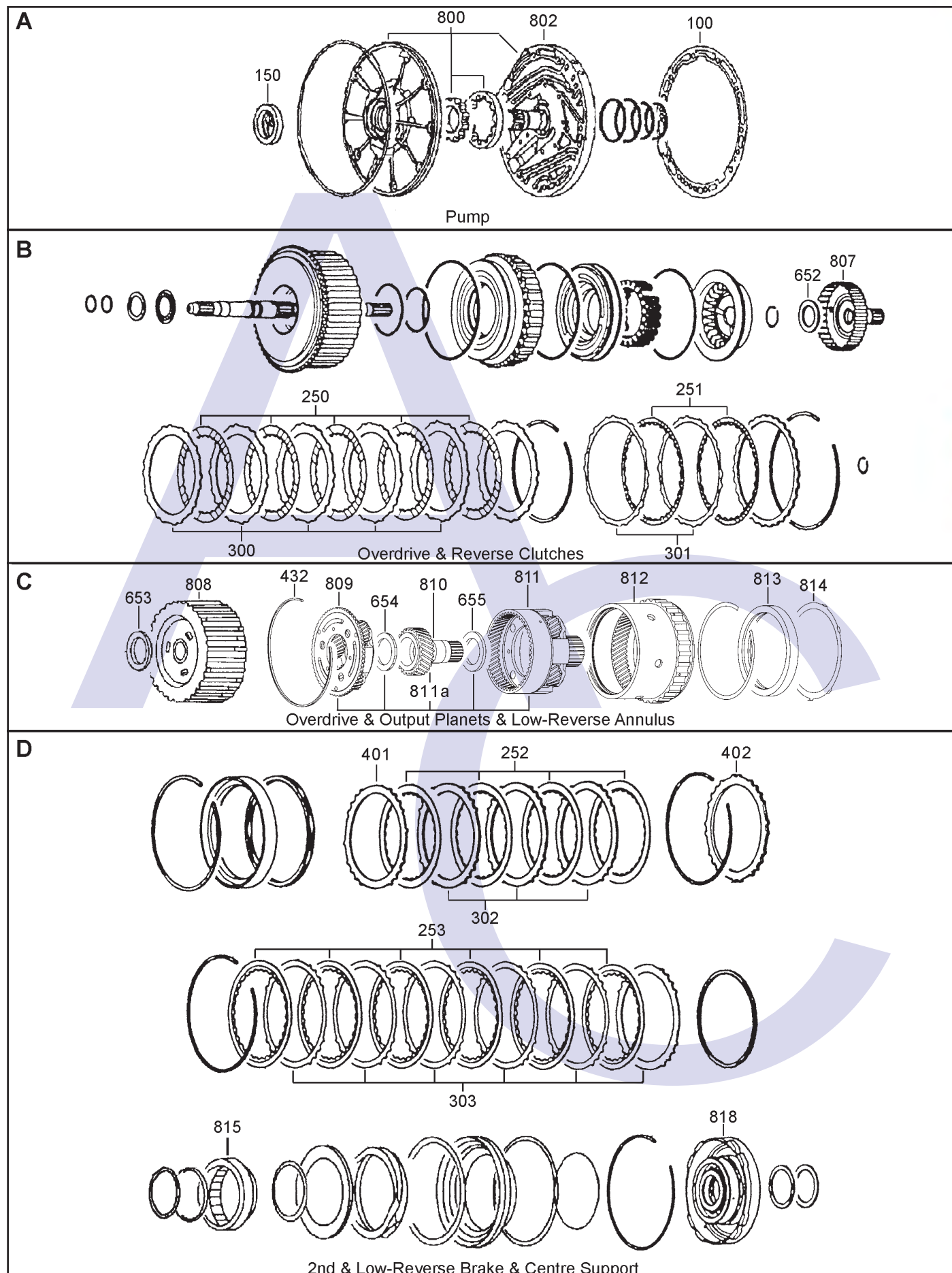
## 4 & 5 SPEED RWD & 4WD (Pajero)



AUTOMATIC CHOICE



THE AUTOMATIC TRANSMISSION PARTS WAREHOUSE



# MITSUBISHI R4A-51, R5A51, V4A-51, V5A-51 4 & 5 SPEED RWD & 4WD (Pajero)

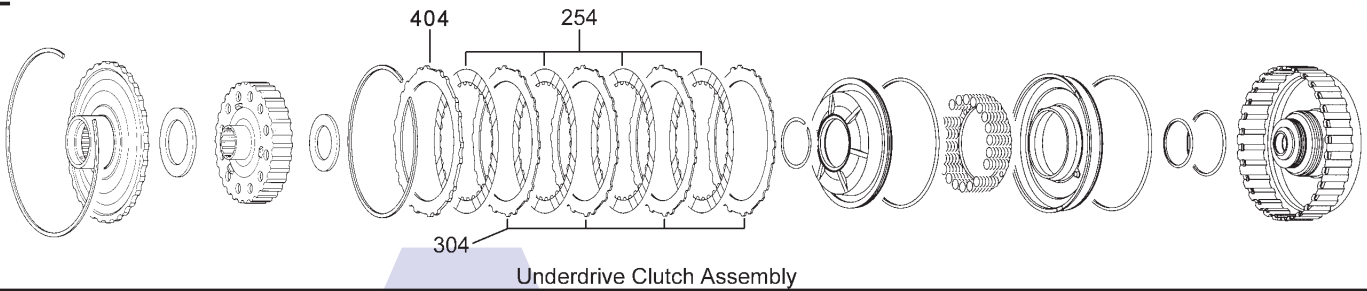


AUTOMATIC CHOICE



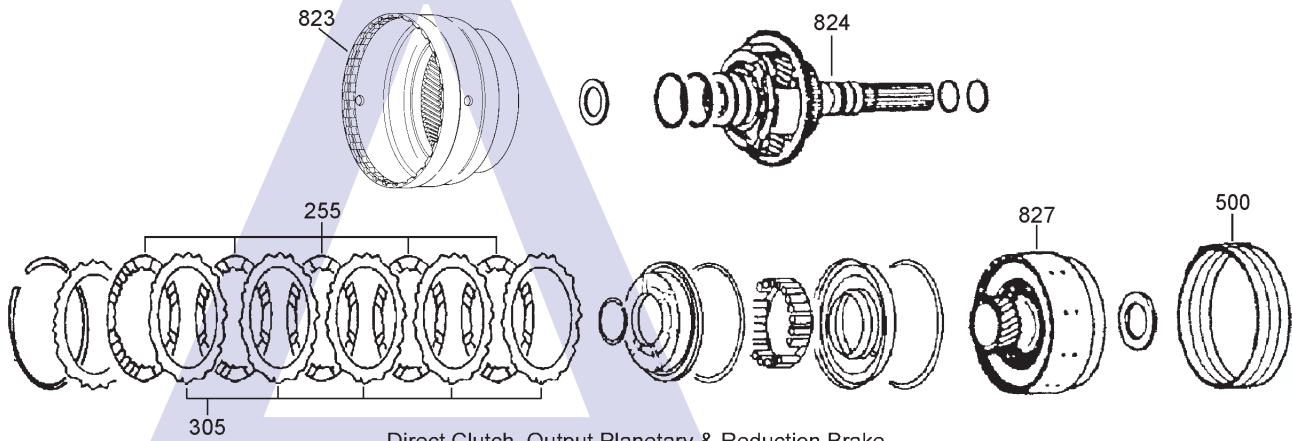
THE AUTOMATIC TRANSMISSION PARTS WAREHOUSE

E



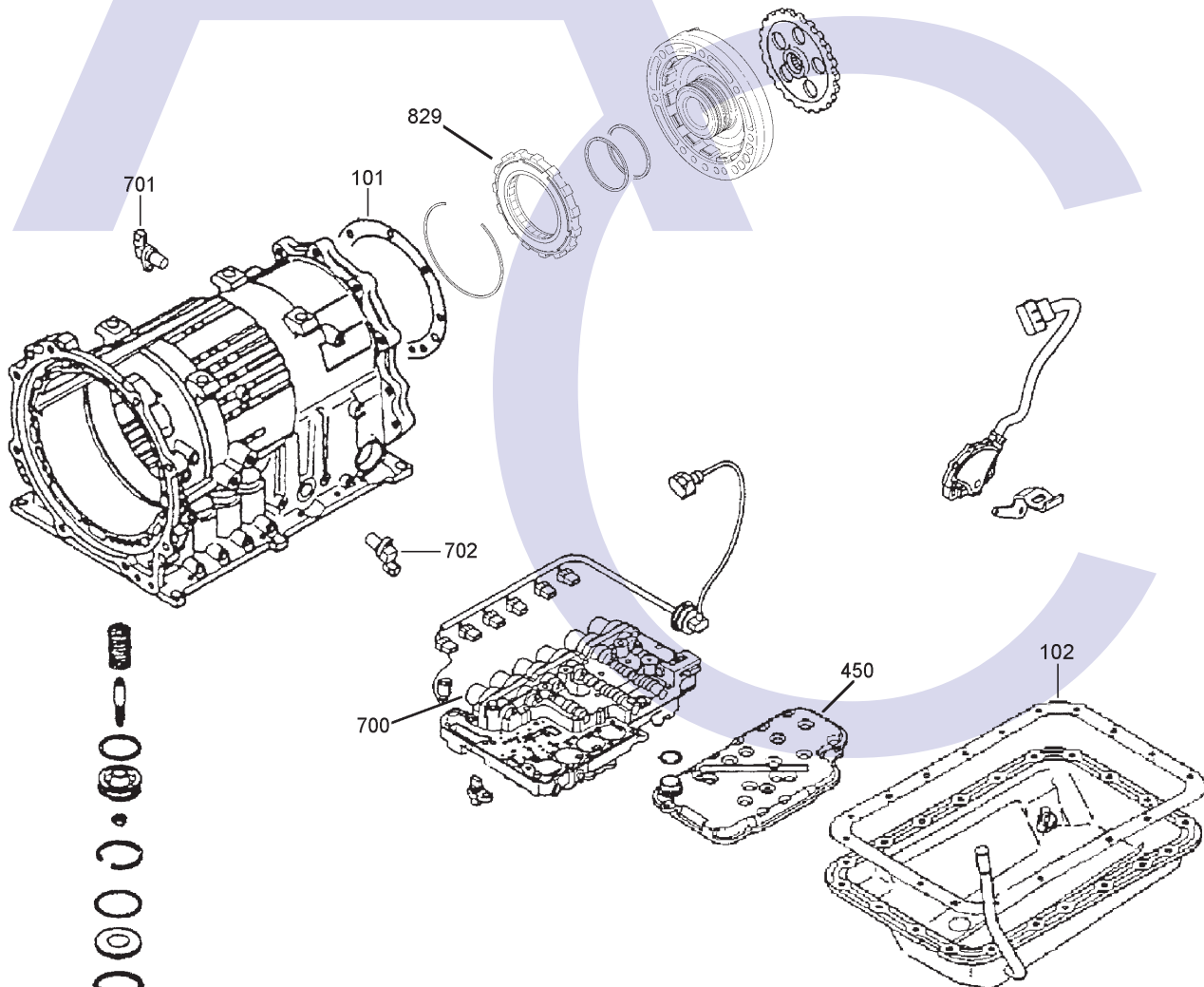
Underdrive Clutch Assembly

F



Direct Clutch, Output Planetary & Reduction Brake

G



Main Case, Servo, Valve Body, Pan & Pan Filter

# MITSUBISHI R4A-51, R5A51, V4A-51, V5A-51 4 & 5 SPEED RWD & 4WD (Pajero)



AUTOMATIC CHOICE



THE AUTOMATIC TRANSMISSION PARTS WAREHOUSE

ILL NO.	DESCRIPTION	YEARS	QTY	PART NO
<b>KITS</b>				
Kit	Overhaul Kit With Filter (OE) V4A-51, V5A-51 .....	96-ON	1	<b>KMV5A.OHK01</b>
Kit	Overhaul (Transtec) R4A-51, V4A-51, V5A-51 .....	96-ON	1	<b>KMV5A.OHK02</b>
Kit	Overhaul (Precision) R4A-51, V4A-51, V5A-51 .....	96-ON	1	<b>R4.OHK51</b>
<b>GASKETS</b>				
Kit	Valve Body Gasket Kit .....	96-ON	1	<b>KMV5A.GK02</b>
100A	Pump Gasket (R/V4A51, R/V5A51) .....	96-ON	1	<b>KMV5A.GAS02</b>
101G	Gasket, Case Adaptor (R/V5A51) .....	96-ON	1	<b>KMV5A.GAS06</b>
102G	Oil Pan .....	96-ON	1	<b>KMV5A.GAS01</b>
NI	Gasket, Valve Body Upper .....	96-ON	1	<b>KMV5A.GAS03</b>
NI	Gasket, Valve Body Lower .....	96-ON	1	<b>KMV5A.GAS04</b>
NI	Gasket, Sep Plate to Lower VB .....	96-ON	1	<b>KMV5A.GAS05</b>
<b>SEALS</b>				
150A	Converter Seal .....	96-ON	1	<b>KM170.MCS01</b>
NI	Adaptor Housing Seal 4WD .....	96-ON	1	
<b>FRICTION &amp; STEEL KITS</b>				
Kit	2nd Brake Clutch Kit .....	96-ON	1	<b>KMV5A.CLK03</b>
<b>Above Kits contain Frictions, Steel &amp; Pressure Plates</b>				
<b>FRICTION PLATES</b>				
Kit	Friction Plate (Combi) .....	96-ON	1	<b>KMF5A.FRK01</b>
250B	Overdrive (148mm OD x 30T x 1.70mm) ..	96-ON	4	<b>KMF4A.FRP15</b>
251B	Reverse (166mm OD x 30T x 1.70mm) ..	96-ON	2	<b>KMF4A.FRP14</b>
252D	2nd Brake (179mm OD x 30T x 1.70mm) ..	96-ON	4	<b>KMF4A.FRP13</b>
252D	2nd Brake (Alto) (179mm OD x 30T x 1.70mm) ..	96-ON	4	<b>KMV5A.FRP52</b>
253D	Low/Reverse Brake (179mm OD x 30T x 1.70mm) ..	96-ON	6	<b>KMF4A.FRP12</b>
253D	Low/Reverse Brake F5A-51 (179mm OD x 30T x 1.70mm) ..	99-ON	5	<b>KMF4A.FRP12</b>
254E	Underdrive (148mm OD x 30T x 1.70mm) ..	96-ON	4	<b>KMF4A.FRP15</b>
255F	Direct Clutch F5A-51 Only (122mm OD x 30T x 1.70mm) ..	99-ON	3-5	<b>KMF5A.FRP01</b>

ILL NO.	DESCRIPTION	YEARS	QTY	PART NO
<b>STEEL PLATES</b>				
Kit	Steel Plate (Aftermarket) (V5A51 Combi) .....	96-ON	1	<b>KMV5A.STK01</b>
Kit	Steel Plate (Alto) (R4A51, V4A51) .....	96-ON	1	<b>F4A51.STK51</b>
Kit	Steel Plate (Alto) (V5A51) .....	99-ON	1	<b>F5A51.STK51</b>
300B	Overdrive (123mm ID x 2.50mm x 20T) ....	96-ON	3	<b>KMF4A.STP15</b>
301B	Reverse (153mm ID x 1.80mm x 20T) ....	96-ON	2	<b>KMF4A.STP14</b>
302D	2nd Brake (153mm ID x 3.90mm x 16T) ....	96-ON	3	<b>KMF4A.STP17</b>
303D	Low/Reverse Brake (160mm ID x 1.00mm x 16T) ....	96-ON	5	<b>KMF4A.STP12</b>
303D	Low/Reverse Brake F5A-51 (160mm ID x 1.00mm x 16T) ....	99-ON	4	<b>KMF4A.STP12</b>
304E	Underdrive (123mm ID x 1.80mm x 20T) ....	96-ON	4	<b>KMF4A.STP11</b>
305F	Direct Clutch F5A-51 Only (88mm ID x 2.50mm x 20T) .....	99-00	3-4	<b>KMF5A.STP01</b>
<b>PRESSURE PLATES</b>				
401D	2nd Brake, Bottom .....	96-ON	1	<b>KMF5A.PP02</b>
402D	2nd Brake, Reaction .....	96-ON	1	<b>KMV5A.PP03</b>
404E	Under Drive Clutch .....	96-ON	1	<b>KMF5A.PP01</b>
<b>SPRINGS &amp; CIRCLIPS</b>				
432C	Circlip, Front Planet Retaining ..	96-ON	1	<b>KMV5A.CIR01</b>
<b>FILTERS</b>				
450G	Filter V5A51 .....	96-ON	1	<b>KMV5A.FIL01</b>
450G	Filter V5A51 (Deep Pick Up) .....	00-ON	1	<b>KMV5A.FIL02</b>
<b>BANDS</b>				
500F	Reduction Brake Band .....	96-ON	1	<b>KMF5A.BAN01</b>
<b>BUSHINGS</b>				
Kit	Bush Kit .....	99-ON	1	<b>KMV5A.BK01</b>
<b>THRUST WASHERS &amp; BEARINGS</b>				
652B	Thrust Bearing Overdrive Hub (Front) .....	96-ON	1	<b>KMV5A.THW01</b>
653C	Thrust Bearing Overdrive Hub (Rear) .....	96-ON	1	<b>KMV5A.THW01</b>
654C	Thrust Bearing (Sun Gear) .....	96-ON	1	<b>KMV5A.THW02</b>
655C	Thrust Bearing, Rear Planet (Front) .....	96-ON	1	<b>KMV5A.THW01</b>
656C	Thrust Bearing, Rear Planet (Rear) .....	96-ON	1	<b>KMV5A.THW04</b>

# MITSUBISHI R4A-51, R5A51, V4A-51, V5A-51

## 4 & 5 SPEED RWD & 4WD (Pajero)



AUTOMATIC CHOICE



THE AUTOMATIC TRANSMISSION PARTS WAREHOUSE

ILL NO.	DESCRIPTION	YEARS	QTY	PART NO
<b>ELECTRICAL COMPONENTS</b>				
700G	Shift Solenoids.....	96-ON	1-6	KMF4A.SOL01
701G	Output Speed Sensor (3 Pin) (Angled Connector).....	96-ON	1	KMF4A.ELE02
702G	Input Speed Sensor (3 Pin) (Vertical Connector) .....	96-ON	1	KMF4A.ELE01
NI	Vehicle Speed Sensor (VSS) (Fits on Tranfer Box Extension)	96-ON	1	KMF5A.ELE03

<b>VALVE BODY PARTS</b>				
Kit	Accumulator Piston With Dual Seals (Sonnax® <a href="#">Click here for Info</a> ) .	96-ON	1	KMF4A.VA02
Kit	TCC Control Valve & Sleeve (Sonnax® <a href="#">Click here for Info</a> ) .	96-ON	1	KMF4A.VA03
Kit	Pressure Control Valve Without Orifice With Sleeve (Sonnax® <a href="#">Click here for Info</a> ) .	96-ON	1	KMF4A.VA04
Kit	Pressure Control Valve With Orifice and Sleeve (Sonnax® <a href="#">Click here for Info</a> ) .	96-ON	1	KMF4A.VA05

<b>HARD PARTS</b>				
800A	Pump Assembly (V4A51) .....	96-ON	1	KMV4A.PUM01
800A	Pump Assembly (V5A51) .....	96-ON	1	KMV5A.PUM01
802A	Pump Stator (V4A51).....	96-ON	1	KMV4A.SUP01
807B	Overdrive Clutch Hub.....	96-ON	1	KMV5A.HUB01
808C	Reverse Sun Gear .....	96-ON	1	KMV5A.HUB02
809C	Overdrive Planetary Carrier .....	96-ON	1	KMV5A.PL05
810C	Sun Gear, Output Planetary (V4A51) (38 T Use With KMV5A.PL01) ..	96-ON	1	KMV5A.SUN02
810C	Sun Gear, Output Planetary (V5A51) (42 T Use With KMV5A.PL02) ..	96-ON	1	KMV5A.SUN01
811C	Output Planetary Carrier (V4A51) (17 T Pinion 3 x Ident Marks) (Use With KMV5A.SUN02) .....	96-ON	1	KMV5A.PL01
811C	Output Planetary Carrier (V5A51) (15 T Pinion 1 x Ident Mark) (Use With KMV5A.SUN01) .....	96-ON	1	KMV5A.PL02
811aC	Planetary Kit, (V4A51) Overdrive & Output Planets .....	96-ON	1	KMV4A.PLK01
812C	(Outer Race/Annulus) Low/Rev One Way Clutch .....	96-ON	1	KMV5A.PL03
813D	Low/Rev One Way Clutch (Front) 130mm O.D.....	96-ON	1	KMV5A.OWC01
814D	Low/Rev One Way Clutch Retaining Clip.....	96-ON	1	KMV5A.RET01
815D	Inner Race Low/Rev O.W.C.....	96-ON	1	KMV5A.OWC03
818D	Centre Support/Low Rev Drum (Need VIN Code) .....	96-ON	1	KMV5A.SUP01
823F	Output Annulus/Hub (V5A51)....	96-ON	1	KMV5A.GE01
824F	Rear Planetary With Shaft (R4/V4A51) .....	96-ON	1	KMV4A.SH01
824F	Rear Planetary With Shaft (R5/V5A51) .....	96-ON	1	KMV5A.PL06
827F	Drum, Direct Clutch (V5A51) ....	96-ON	1	KMV5A.DRU01
829G	Direct One Way Clutch (Rear) Includes Outer Race .....	97-ON	1	KMV5A.OWC04

ILL NO.	DESCRIPTION	YEARS	QTY	PART NO
<b>SPECIAL ITEMS</b>				
<b>TOOLS &amp; MANUALS</b>				
NI	ATSG Repair Manual (KMV4A / V5A).....	96-ON	1	KMV5A.MAN01