

BORG WARNER 35TA

3 SPEED FWD

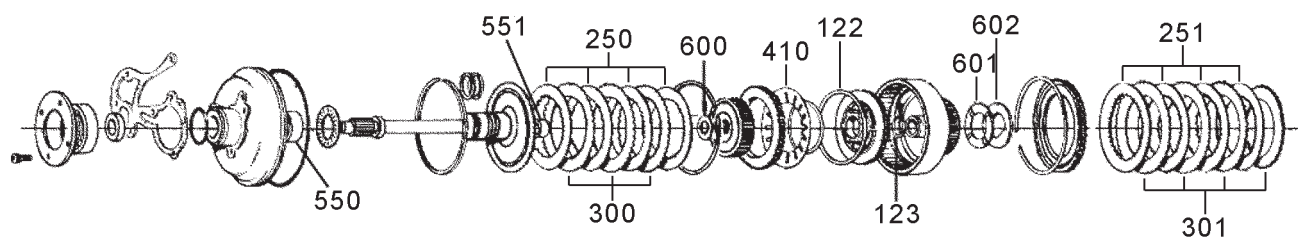


AUTOMATIC CHOICE

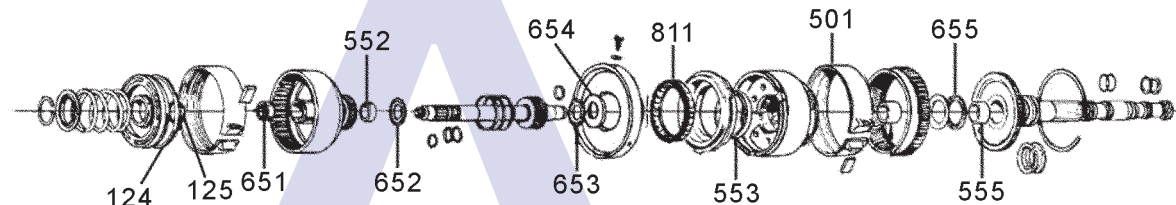


THE AUTOMATIC TRANSMISSION PARTS WAREHOUSE

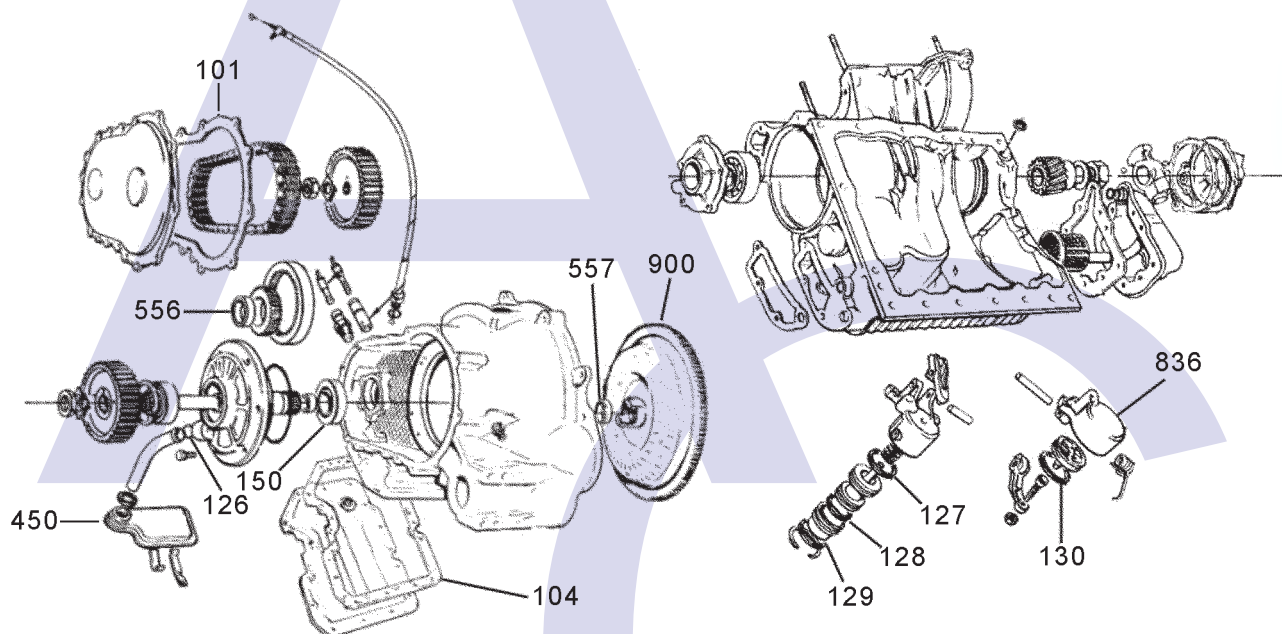
A



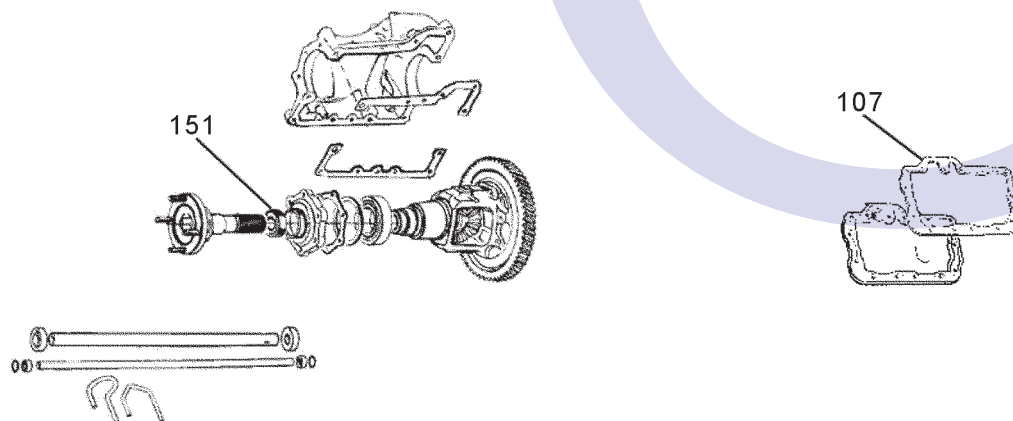
B



C



D



BORG WARNER 35TA

3 SPEED FWD

ILL NO.	DESCRIPTION	YEARS	QTY	PART NO
KITS				
Kit	Overhaul Kit (1800).....	1		BW35TA.OHK01
Kit	Overhaul Kit (2200).....	1		BW35TA.OHK02
Kit	Gasket & Seal Kit (1800)	1		BW35TA.GSK01
Kit	Gasket Kit	1		BW35TA.GK01
GASKETS				
101C	Chain Cover	1		BW35TA.GAS01
104C	Valve Body Cover	1		BW35TA.GAS02
107D	Servo Cover	1		BW35TA.GAS03
NI	Engine to Transmission (4 Cyl) .	1		BW35TA.GAS04
RUBBER COMPONENTS				
122A	Forward Clutch Outer.....	1		BW35.SQR02
123A	Forward Clutch Inner	1		BW35.OR01
124B	High & Reverse Clutch Outer....	1		BW35.SQR03
125B	High & Reverse Clutch Inner ...	1		BW35.OR02
126C	Pump Pick-up O Ring	1		BW35.OR09
127C	Front Servo Piston Outer Small(4Cyl)	1		BW35.OR03
127C	Front Servo Piston Outer Medium(6 Cyl)	1		BW35.OR04
128C	Front Servo Piston Inner.....	1		BW35.OR06
129C	Front Servo Cover Small (4 Cyl)	1		BW35.OR03
129C	Front Servo Cover Medium (6 Cyl)	1		BW35.OR04
130C	Rear Servo O Ring.....	1		BW35.OR08
METAL CLAD SEALS				
150C	Front Pump (Early)..... AR	1		BW35TA.MCS01
150C	Front Pump (Late)..... AR	1		BW37.MCS01
151D	Axle Seal 1800..... All	2		BW35TA.MCS02
151D	Axle Seal 2200..... All	2		BW35TA.MCS03
SEALING RINGS				
FRICTION PLATES				
Kit	Friction Plate (Alto)	1		BW35.FRK51
250A	Forward Clutch Borg Warner Grooved Heavy Duty (OEM).....	3-5		BW35.FRP02
251A	High & Reverse Borg Warner Grooved Heavy Duty (OEM).....	3-5		BW35.FRP02
STEEL PLATES				
Kit	Steel Plate (Alto).....	1		BW35.STK51
300A	Forward Flat (1.70mm)	2-4		BW35.STP01
300A	Forward Flat Oversize (2.00mm).....	A.R		BW35.STP04
301A	High & Reverse Dished.....	3-5		BW35.STP02
PRESSURE PLATES				
SPRINGS & CIRCLIPS				
410A	Diaphragm Spring Heavy Duty .	1		BW35.DIA01

ILL NO.	DESCRIPTION	YEARS	QTY	PART NO
FILTERS				
450C	Filter	1		BW35TA.FIL01
BANDS				
501D	Rear Band Rigid Heavy Duty	1		BW35.BAN02
BUSHINGS				
550A	End Sealing Plate	1		BW35.BUS04
551A	Input Shaft	1		BW35.BUS05
552B	Rear Clutch Drum	1		BW35.BUS08
553B	Centre Support.....	1		BW35.BUS07
555B	Output Shaft (Grooved).....	1		BW35.BUS09
556C	Pump Gear Bush Early (0.375" Wide)	1		BW35TA.BUS02
557C	Converter Assy.....	1		BW35.BUS02
THRUST WASHERS & BEARINGS				
600A	Thrust Washer Forward Clutch Hub	1		BW35.THR02
601A	Thrust Washer Forward Clutch to Top & Reverse Clutch (Bronze)	1		BW35.THR03
602A	Thrust Washer Forward Clutch to Top & Reverse Clutch (Steel)....	1		BW35.THR04
651B	High Clutch Drum Bearing	1		BW35.BUS06
652B	Sungear Needle Bearing (1.55mm).....	2		BW35.TOR01
653B	Sungear Needle Bearing (3.13mm).....	1		BW35.TOR02
654B	Needle Roller Plate (Sun Gear)	1		BW35.THR06
655B	Planetary Needle Bearing 1.55mm	1		BW35.TOR03
ELECTRICAL COMPONENTS				
NI	Inhibitor Switch (Late)	1		BW35TA.INH01
VALVE BODY PARTS				
HARD PARTS				
811B	One Way Clutch.....	1		BW35TA.OWC01
836C	Rear Servo Assy	1		BW35TA.SER01
SPECIAL ITEMS				
TOOLS & MANUALS				
TORQUE CONVERTERS				
900C	Austin 1700cc Only	1		BW35TA.TC177
900C	Austin All Except 1700cc.....	1		BW35TA.TC84



AUTOMATIC CHOICE



THE AUTOMATIC TRANSMISSION PARTS WAREHOUSE