

BORG WARNER MODEL 8 & 12

3 SPEED RWD

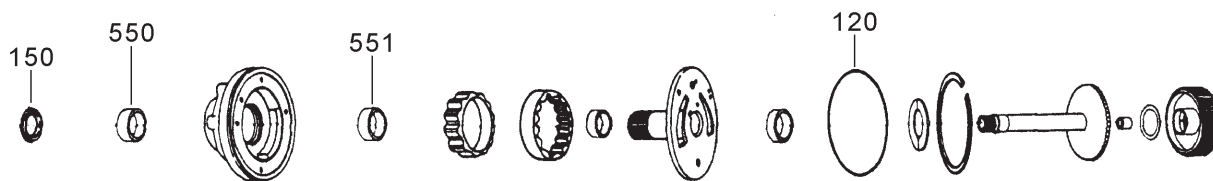


AUTOMATIC CHOICE



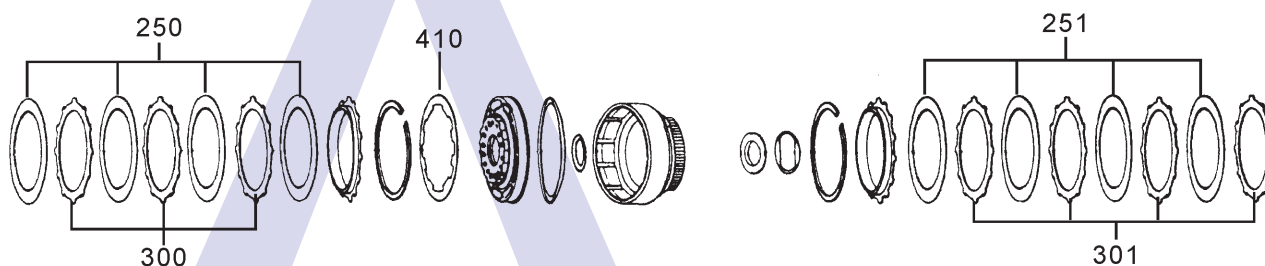
THE AUTOMATIC TRANSMISSION PARTS WAREHOUSE

A



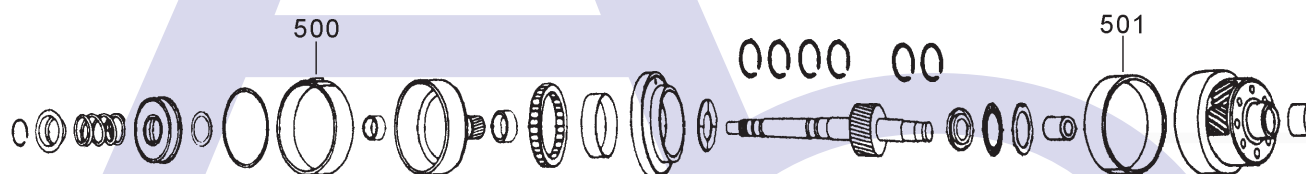
Pump Assembly

B



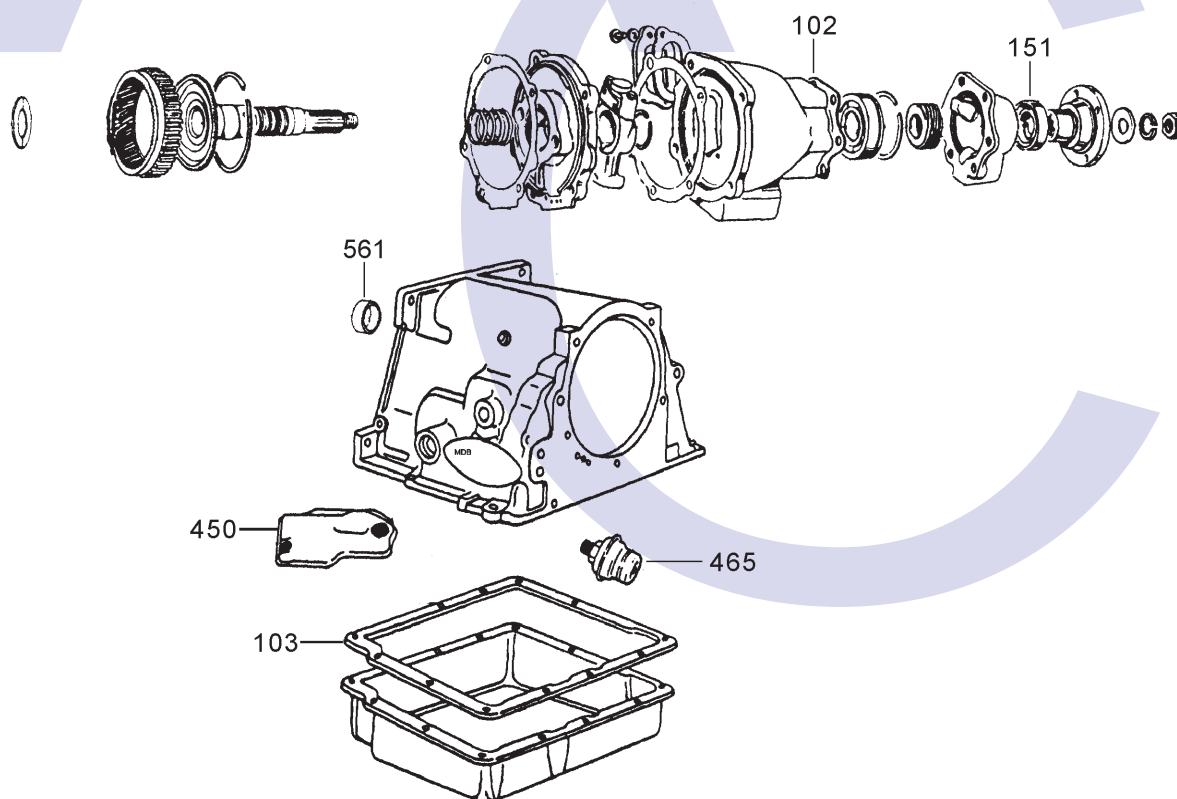
Forward & Direct Clutch Assembly's

C



Planetary Assembly

D



Case & Output Assembly Etc

BORG WARNER MODEL 8 & 12

3 SPEED RWD



AUTOMATIC CHOICE



THE AUTOMATIC TRANSMISSION PARTS WAREHOUSE

| ILL NO. | DESCRIPTION | YEARS | QTY | PART NO |
|--------------------------|---|-------|-----|-------------------|
| KITS | | | | |
| Kit | Master Overhaul Model 8..... | 56-66 | 1 | BW8.MOHK01 |
| Kit | Master Overhaul Model 8 (Precision)..... | 56-67 | 1 | BW8.MOHK51 |
| Kit | Overhaul Kit Model 8 (Precision)..... | 56-66 | 1 | BW8.OHK51 |
| Kit | Overhaul Kit Model 8 (Combo) (Transtec)..... | 56-71 | 1 | BW8.OHK01 |
| Kit | Overhaul Kit Model 12 (Transtec)..... | 67-71 | 1 | BW12.OHK01 |
| Kit | Overhaul Kit Model 12 (Precision)..... | 67-71 | 1 | BW12.OHK51 |
| Kit | Gasket & Rubber Mod 8 & 12... | 62-66 | 1 | BW12.GSK01 |
| GASKETS | | | | |
| 102D | Extension Seal Housing..... | 62-71 | 1 | BW12.GAS07 |
| 103D | Pan Gasket | 62-71 | 1 | BW12.GAS01 |
| RUBBER COMPONENTS | | | | |
| 120A | Front Pump O Ring..... | 62-71 | 1 | BW12.SQR01 |
| METAL CLAD SEALS | | | | |
| 150A | Front Pump Seal | 62-71 | 1 | BW12.MCS01 |
| 151D | Extension Housing Model 12 Jaguar Only..... | 67-71 | 1 | BW12.MCS02 |
| 151D | Extension Housing Model 8 | 62-66 | 1 | TF8.MCS06 |
| 151D | Extension Housing Fiat Only (78mm x 51mm x 13mm)..... | 67-75 | 1 | BW12.MCS03 |
| SEALING RINGS | | | | |
| Kit | Sealing Ring Kit Model 12..... | 67-71 | 1 | BW12.SRK01 |
| Kit | Sealing Ring Kit Model 8..... | 62-66 | 1 | BW8.SRK01 |
| FRICTION PLATES | | | | |
| 250B | Forward (Front 1.50mm) | 62-71 | 4-5 | BW12.FRP01 |
| 251B | High & Reverse (1.50mm) | 62-71 | 4-5 | BW12.FRP01 |
| 251B | High & Reverse Model 8 (2.40mm)..... | 62-66 | 4 | BW12.FRP02 |
| STEEL PLATES | | | | |
| Kit | Steel Plate (Alto)..... | 56-61 | 1 | BW12.STK51 |
| 300B | Forward (Front 1.75mm) | 62-71 | 3-4 | BW12.STP01 |
| 301B | High & Reverse (1.75mm) | 62-71 | 5 | BW12.STP02 |
| PRESSURE PLATES | | | | |

| ILL NO. | DESCRIPTION | YEARS | QTY | PART NO |
|--------------------------------------|--|-------|-----|-------------------|
| SPRINGS & CIRCLIPS | | | | |
| 410B | Forward Clutch Diaphragm | 62-ON | 1 | BW12.DIA01 |
| FILTERS | | | | |
| 450D | Filter Model 8 | 62-66 | 1 | BW8.FIL01 |
| NI | Filter Model 12 | 67-71 | 1 | BW12.FIL01 |
| BANDS | | | | |
| 500C | Intermediate Band Flexi | 67-71 | 1 | BW12.BAN01 |
| 500C | Intermediate (Front) Offset Ears Thick Lining..... | 62-66 | 1 | BW8.BAN01 |
| 501C | Low & Reverse Band (Rear)..... | 62-71 | 1 | BW12.BAN02 |
| BUSHINGS | | | | |
| 550A | Front Pump Bush | 62-71 | 1 | BW12.BUS01 |
| 551A | Front Pump Drive Gear Bush.... | 62-71 | 1 | BW12.BUS02 |
| 561D | Case Bush | 62-71 | 1 | BW12.BUS03 |
| THRUST WASHERS & BEARINGS | | | | |
| ELECTRICAL COMPONENTS | | | | |
| VALVE BODY PARTS | | | | |
| HARD PARTS | | | | |
| MODULATORS | | | | |
| 465D | Modulator Model 12 4.2 Litre | 67-71 | 1 | BW12.MOD02 |
| 465D | Modulator Jaguar V12 Only | 72-75 | 1 | BW12.MOD01 |
| SPECIAL ITEMS | | | | |
| TOOLS & MANUALS | | | | |