

HYUNDAI A4AF3, A4BF3 (Accent 2000-2007, Matrix 2003 >) 4 SPEED FWD With Lock Up (Electronic Control)

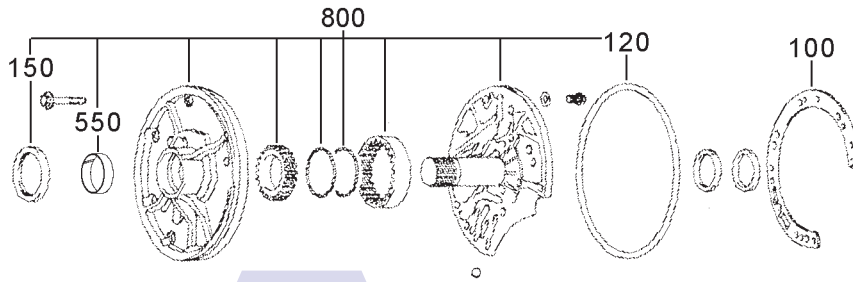


AUTOMATIC CHOICE



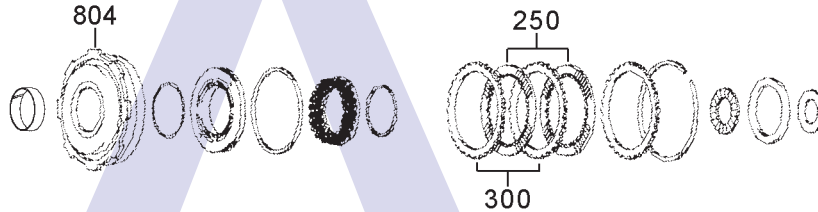
THE AUTOMATIC TRANSMISSION PARTS WAREHOUSE

A



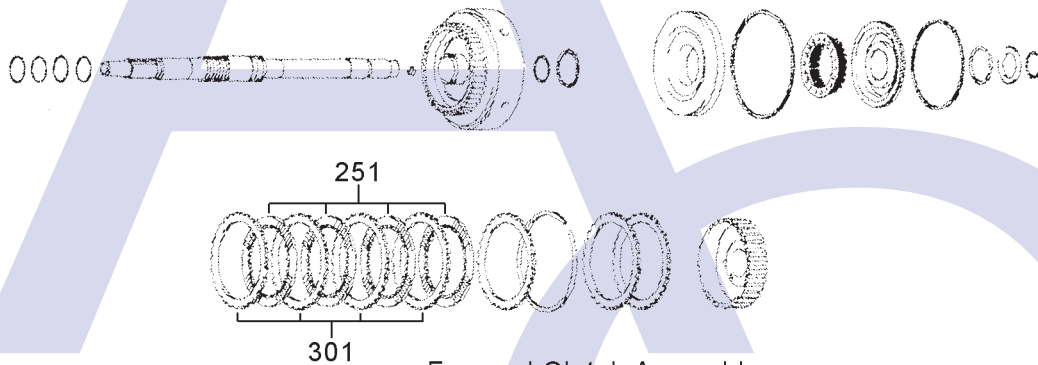
Oil Pump Assembly

B



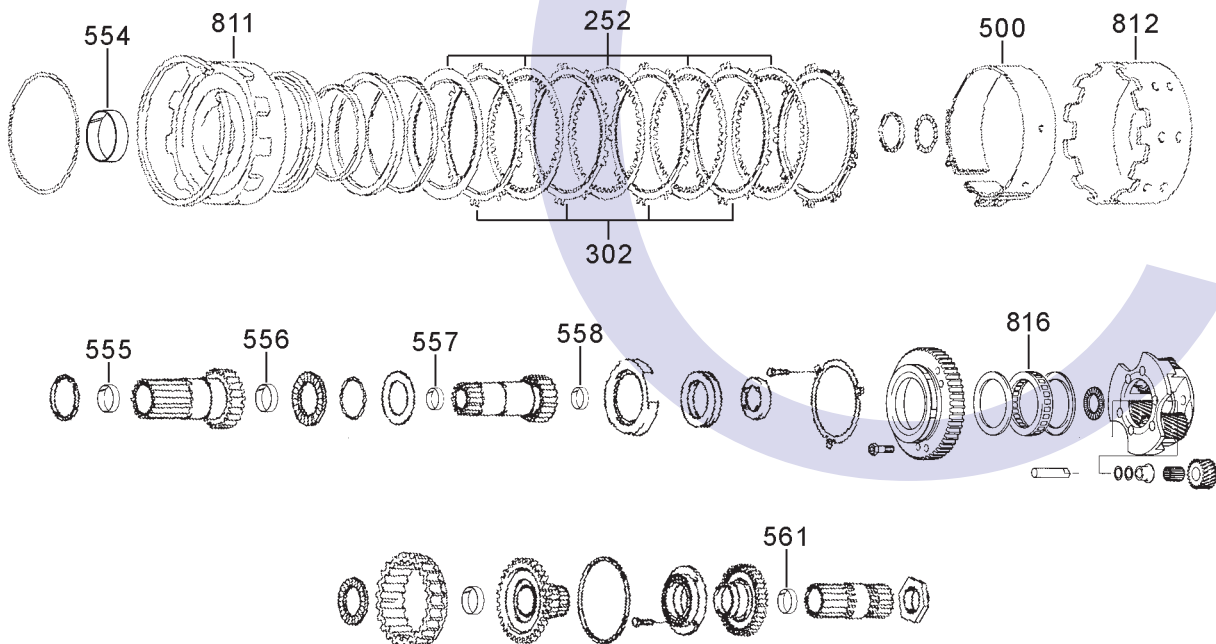
Direct Clutch Assembly

C



Forward Clutch Assembly

D



Low/Reverse Brake & Planetary Assemblies

HYUNDAI A4AF3, A4BF3 (Accent 2000-2007, Matrix 2003 >) 4 SPEED FWD With Lock Up (Electronic Control)

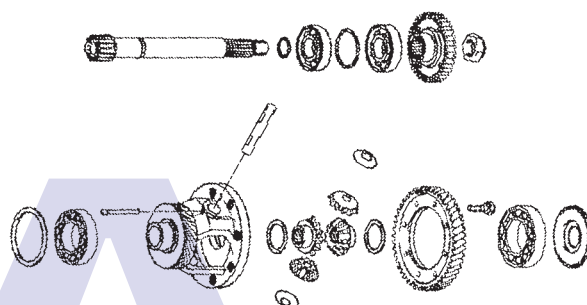


AUTOMATIC CHOICE



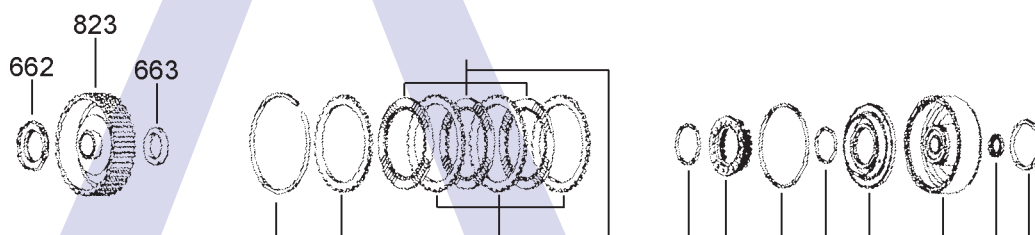
THE AUTOMATIC TRANSMISSION PARTS WAREHOUSE

E



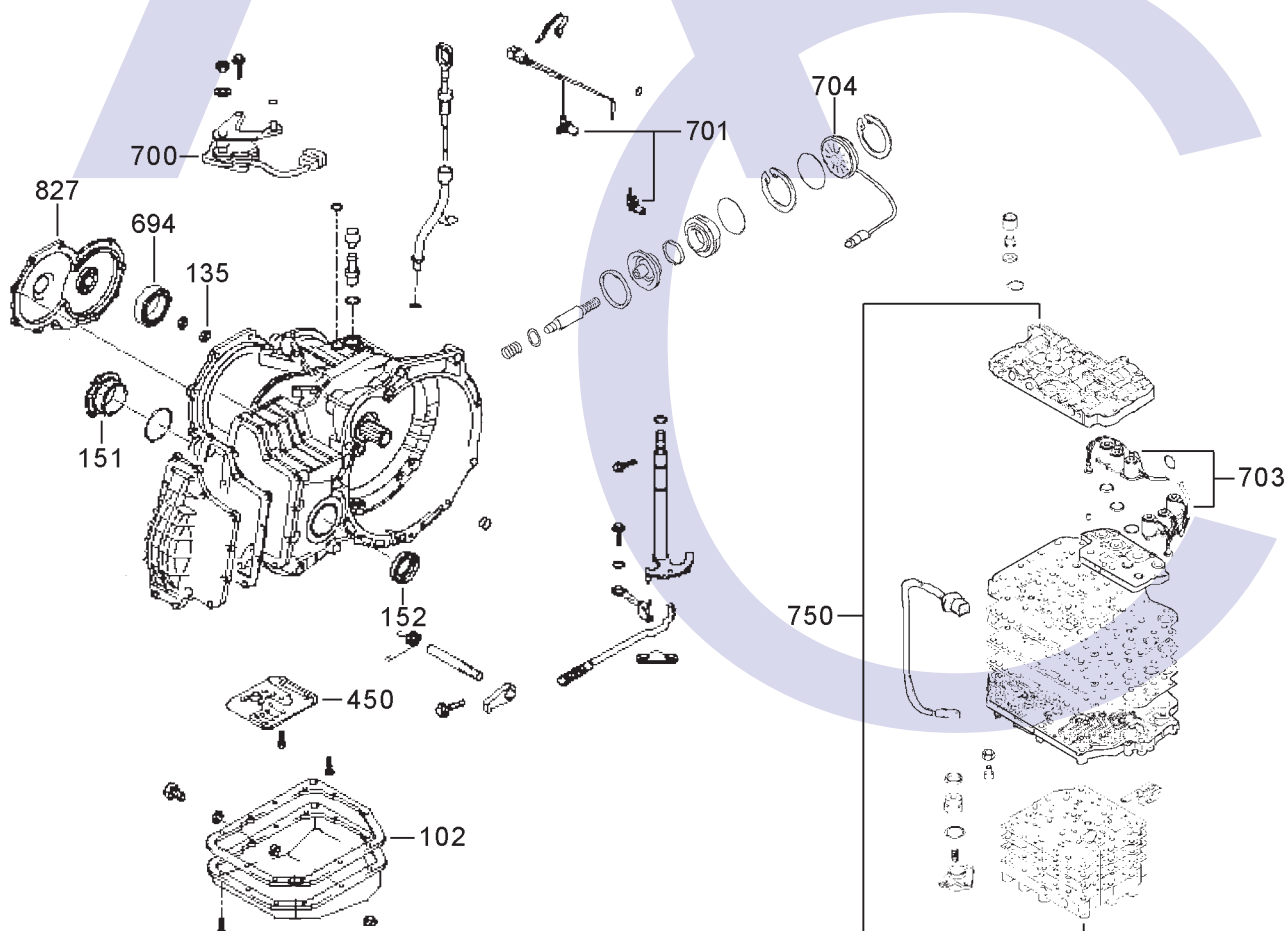
Transfer Shaft & Differential Assembly

F



End Clutch/Overdrive Clutch Assembly

G



Main Case, Oil Pan, Filter, Valve Body & External Components

HYUNDAI A4AF3, A4BF3 (Accent 2000-2007, Matrix 2003 >) 4 SPEED FWD With Lock Up (Electronic Control)



AUTOMATIC CHOICE



THE AUTOMATIC TRANSMISSION PARTS WAREHOUSE

ILL NO.	DESCRIPTION	YEARS	QTY	PART NO
KITS				
Kit	Overhaul A4AF3/A4BF3 (Transtec) (6 Solenoids).....	00-ON	1	KM177.OHK08
GASKETS				
100A	Pump Gasket	00-ON	1	KM177.GAS04
102G	Pan Gasket	00-ON	1	KM177.GAS05
NI	Spacer Plate Valve Body Upper With Bonded Gasket (Getz)	00-ON	1	KM177.SP01
NI	Spacer Plate Valve Body Lower With Bonded Gasket (Getz)	00-ON	1	KM177.SP02
RUBBER COMPONENTS				
120A	Pump O Ring	00-ON	1	KM170.OR01
135G	'O' Ring, End Cover to Case	00-ON	1	KM177.OR01
METAL CLAD SEALS				
150A	Front Pump Seal	00-ON	1	KM170.MCS01
151E	Drive Shaft Seal (Left Hand)	00-ON	1	KM170.MCS02
152E	Drive Shaft Seal (Right Hand)	00-ON	1	KM170.MCS02
MOULDED PISTONS				
SEALING RINGS				
Kit	Sealing Ring Kit	00-ON	1	KM177.SRK02
FRICTION PLATES				
250A	Direct Friction (127 x 38T x 1.70mm Thick)	00-ON	4	KM170.FRP12
250A	Direct Friction (127 O.D. x 104 I.D. x 38T x 1.90mm Thick)	00-ON	4	KM170.FRP04
251B	Forward Friction (127 x 38T x 1.70mm Thick)	00-ON	4	KM170.FRP12
2252C	Low/ Rev Friction (152 O.D. x 51T x 1.85mm)	93-ON	6	KM170.FRP05
253D	Overdrive Friction (Alto) (123mm x 36T x 1.65mm)	00-ON	3	KM170.FRP13
Check sizes before ordering as variations may exist				
STEEL PLATES				
300A	Direct Steel (104.4 I.D. x 3.00mm x 24T)	00-ON	3	KM170.STP06
301B	Forward Steel (104.4 I.D. x 2.00mm x 24T)	00-ON	5	KM170.STP23
302C	Low & Reverse Brake (134mm ID x 1.00mm x 20T)	00-ON	5	KM170.STP15
302C	Low & Reverse Brake (134mm ID x 1.08mm x 20T)	00-ON	5	KM170.STP16

ILL NO.	DESCRIPTION	YEARS	QTY	PART NO
STEEL PLATES Cont...				
303D	Overdrive (95.80mm ID x 4.00mm x 25T) .	00-ON	3-4	KM170.STP20
Check sizes before ordering as variations may exist				
PRESSURE PLATES				
403D	Low/Rev Brake (20 Teeth)	00-ON	1	KM170.PP04
SPRINGS & CIRCLIPS				
FILTERS				
450E	Pan Filter	00-ON	1	KM177.FIL02
BANDS				
500C	Band (44mm Wide)	00-ON	1	KM177.BAN01
BUSHINGS				
550A	Converter to Pump	00-ON	1	KM170.BUS01
554D	Centre Support (Narrow) (42.926mm ID)	00-ON	1	KM175.BUS05
555D	Reverse Sun Gear (Front) (28.00mm ID)	00-ON	1	KM175.BUS04
556D	Reverse Sun Gear (Rear) (28.00mm ID)	00-ON	1	KM175.BUS04
557D	Forward Sungear Front (20.57mm ID)	00-ON	1	KM175.BUS03
558D	Forward Sungear Rear (20.57mm ID)	00-ON	1	KM175.BUS03
561D	Overdrive Shaft (20.57mm ID)	00-ON	1	KM175.BUS03
THRUST WASHERS & BEARINGS				
600A	Thrust Washer Pump to Dir Clutch Drum Selective (1.80mm)	00-ON	AR	KM170.THW03
	(2.20mm)	00-ON	AR	KM170.THW02
	(2.60mm)	00-ON	AR	KM170.THW01
	(3.00mm)	00-ON	AR	KM170.THW04
662F	Radial Bearing OD Hub (Front)	00-ON	1	KM177.TOR01
663F	Thrust Washer, OD Hub (Rear)	00-ON	1	KM177.THW01
694G	Bearing, OD Clutch to End Cover	00-ON	1	KM177.BE01
ELECTRICAL COMPONENTS				
700G	Range Switch (Getz OE)	00-ON	1	KM177.INH01
701G	Speed Sensors, Input & Output (Red Tape, Wires are 39.37cm and 20.32cm Long)	00-ON	1	KM177.ELE02
701G	Speed Sensors, Input & Output (OE) (Hyundai Getz)	00-ON	1	KM177.ELE05

HYUNDAI A4AF3, A4BF3 (Accent 2000-2007, Matrix 2003 >) 4 SPEED FWD With Lock Up (Electronic Control)



AUTOMATIC CHOICE



THE AUTOMATIC TRANSMISSION PARTS WAREHOUSE

ILL NO.	DESCRIPTION	YEARS	QTY	PART NO
ELECTRICAL COMPONENTS Cont...				
703G	Solenoid Assembly (6 Sols) (Rostra).....	00-ON	1	KM177.SOL04
703G	Solenoid Assy (OE) (A4BF3 Hyundai Getz).....	00-ON	1	KM177.SOL05
704G	Cover, Kick Down Servo (OE) (A4BF3 Getz 80.00mm).....	00-ON	1	KM177.COV03
VALVE BODY PARTS				
750G	Valve Body Assembly (OEM) Hyundai Getz/Accent (A4BF3)....	00-ON	1	KM177.VB01
NI	Spacer Plate Valve Body Upper With Bonded Gasket (Getz)	00-ON	1	KM177.SP01
NI	Spacer Plate Valve Body Lower With Bonded Gasket (Getz)	00-ON	1	KM177.SP02
HARD PARTS				
800A	Pump Assy (A4BF2/3) Hyundai/Kia Cerato.....	00-ON	1	KM177.PUM03
804B	Dirct Drum (Matrix A4AF3).....	03-ON	1	KM177.DRU03
811D	Centre Support (37mm Tall).....	00-ON	1	KM177.SUP01
811D	Centre Support (40mm Tall).....	00-ON	1	KM177.SUP02
812D	Kickdown Drum (100mm Tall) (OEM)	00-ON	1	KM177.POT01
812D	Kickdown Drum (100mm Tall) (Aftermarket).....	00-ON	1	KM177.POT31
812D	Kickdown Drum (Matrix) (90mm Tall x 152mm O.D.)	03-ON	1	KM177.POT03
816D	One Way Clutch (O.E.) (Hyundai Matrix).....	00-ON	1	KM177.OWC02
823F	Hub, Overdrive Clutch.....	00-ON	1	KM177.HUB03
826F	Overdrive Clutch Assembly.....	00-ON	1	KM177.DRU22
827G	End Cover.....	00-ON	1	KM177.COV02
SPECIAL ITEMS				
TOOLS & MANUALS				

ILL NO.	DESCRIPTION	YEARS	QTY	PART NO
---------	-------------	-------	-----	---------