

722.8

CVT FWD (Electronic Control)

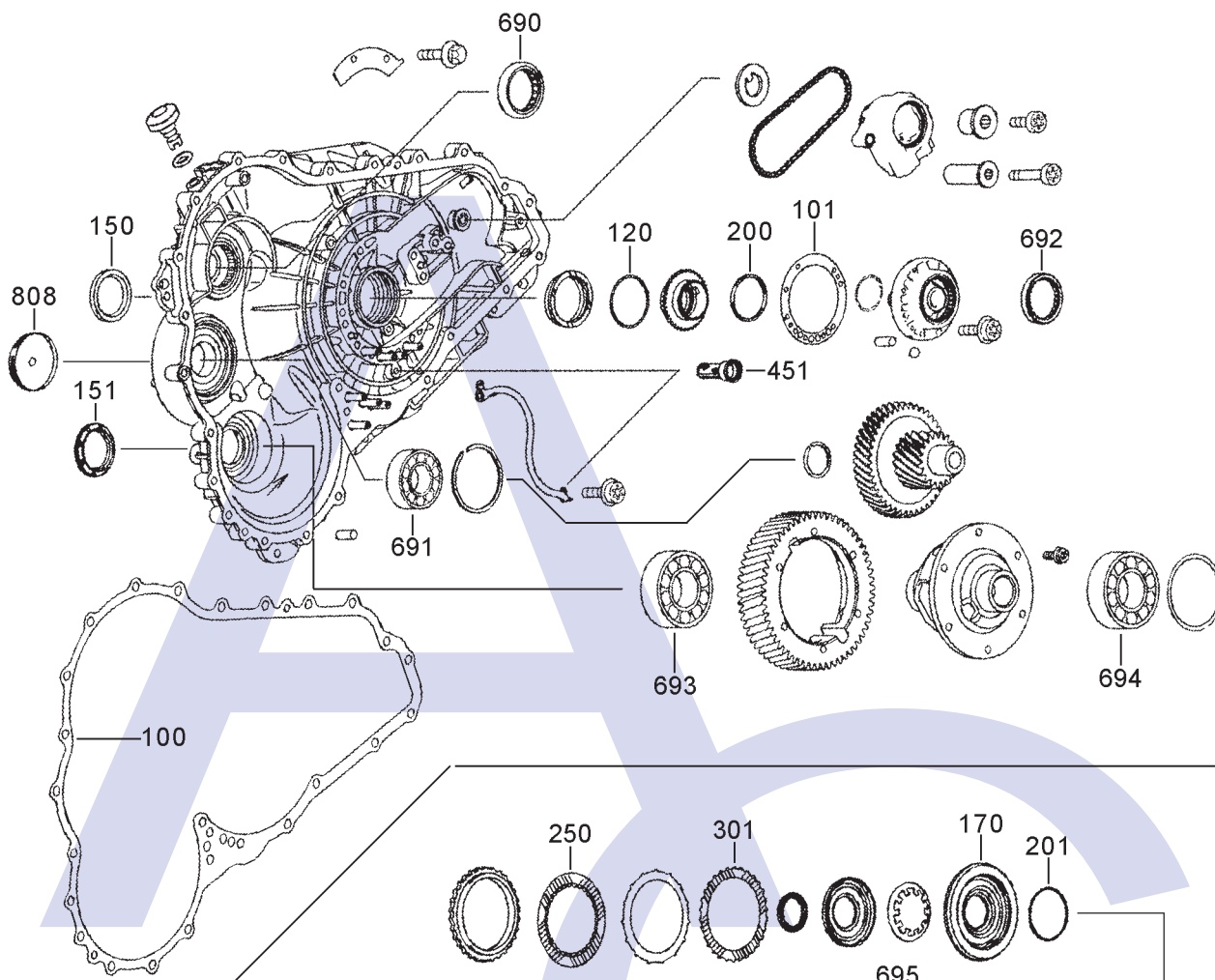


AUTOMATIC CHOICE

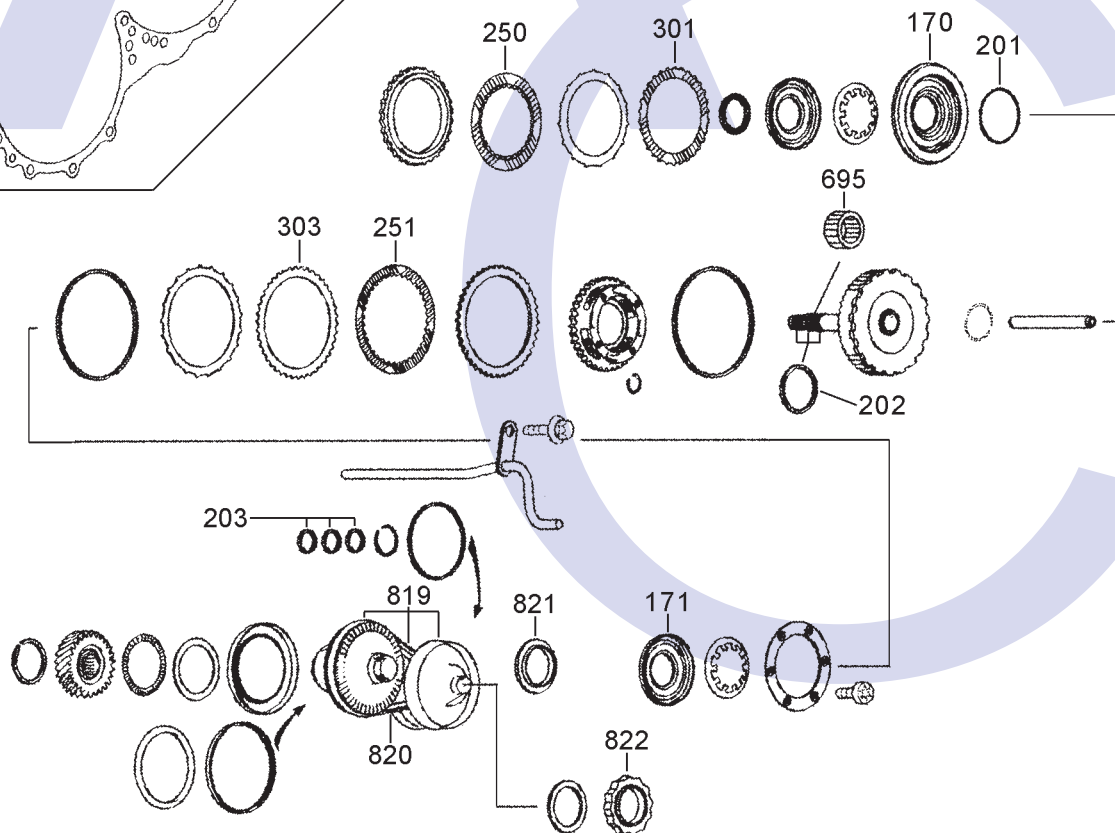


THE AUTOMATIC TRANSMISSION PARTS WAREHOUSE

A



B



722.8

CVT FWD (Electronic Control)

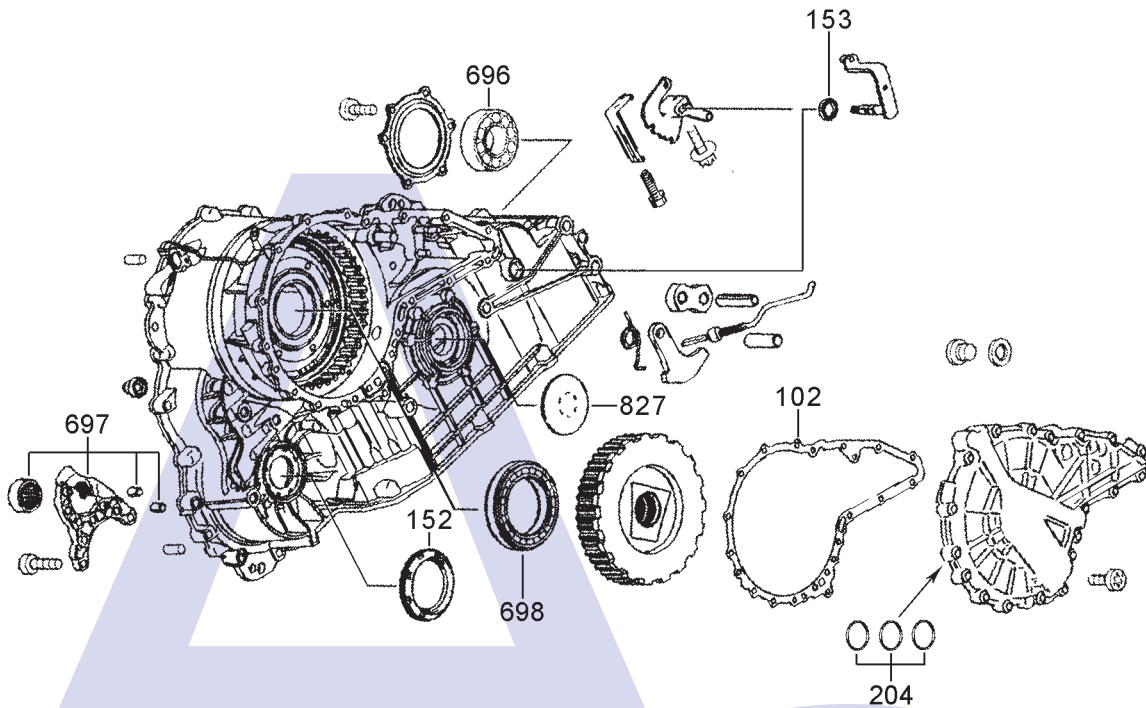


AUTOMATIC CHOICE

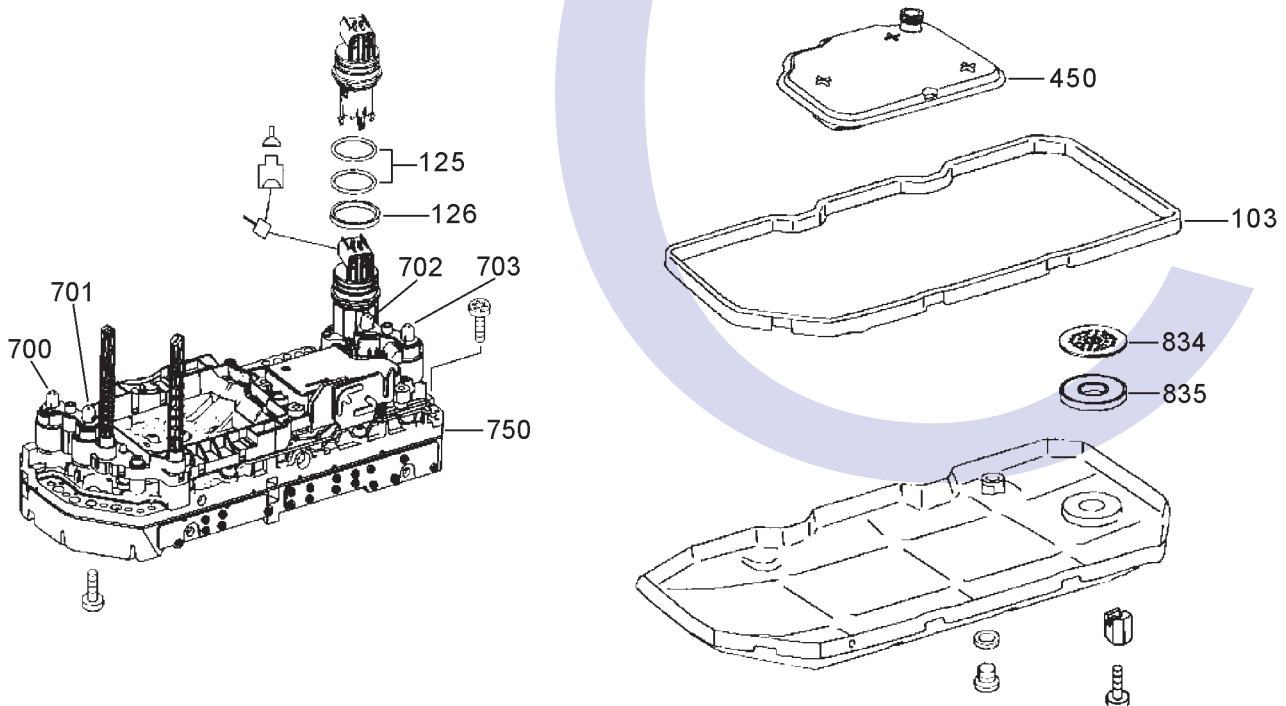


THE AUTOMATIC TRANSMISSION PARTS WAREHOUSE

C



D



ILL NO.	DESCRIPTION	YEARS	QTY	PART NO
KITS				
Kit	Overhaul Kit (Aftermarket)	05-ON	1	M169.OHK01
GASKETS				
100A	Main Case Gasket (OEM)	05-ON	1	M169.GAS03
100A	Main Case Gasket (AM)	05-ON	1	M169.GAS13
101A	Sprocket Cover Gasket	05-ON	1	M169.GAS04
102C	Rear Cover Gasket	05-ON	1	M169.GAS05
103D	Pan Gasket to Serial 305061 (All Rubber)	-05/07	1	M169.GAS01
103D	Pan Gasket from Serial 305062 (Metal With Rubber Seal)	05/07-ON	1	M169.GAS02
RUBBER COMPONENTS				
120A	'O' Ring, Pump Drive Gear Housing	05-ON	1	M169.OR01
125D	'O' Ring Case Connector (Small)	05-ON	2	M169.OR02
126D	'O' Ring Case Connector (Large)	05-ON	1	M169.OR03
METAL CLAD SEALS				
150A	Converter Seal	05-ON	1	MERC126.MCS01
151A	Drive Shaft Seal (L/Hand)	05-ON	1	M169.MCS02
152C	Drive Shaft Seal (R/Hand)	05-ON	1	M169.MCS02
153C	Selector Shaft Seal	05-ON	1	M169.MCS03
MOULDED PISTONS				
170B	Piston, Output Shaft (Forward Clutch)	05-ON	1	M169.PIS01
171B	Piston, Planet Carrier (Reverse Brake)	05-ON	1	M169.PIS02
SEALING RINGS				
200A	Pump Drive Gear	05-ON	1	M169.SSR01
201B	Output Shaft (Front)	05-ON	1	M169.SSR02
202B	Output Shaft (32mm O.D.)	05-ON	3	M169.SSR03
203B	Input Shaft (28mm O.D.)	05-ON	3	M169.SSR04
204C	Rear Cover (32mm O.D.)	05-ON	3	M169.SSR03
FRICTION PLATES				
250B	Forward Clutch (OEM) (180mm OD x 1.78mm x 46T) ..	05-ON	3	M169.FRP01
250B	Forward Clutch (Alto) (180mm OD x 1.78mm x 46T) ..	05-ON	3	M169.FRP51
251B	Reverse Brake (OEM) (193.3mm OD x 2.18mm x 36T)	05-ON	3	M169.FRP02
251B	Reverse Brake (Alto) (193.3mm OD x 2.18mm x 36T)	05-ON	3	M169.FRP52
STEEL PLATES				
301B	Forward Clutch (OEM) (154mm ID x 1.40mm x 48T)	05-ON	3	M169.STP01
301B	Forward Clutch (Alto) (154mm ID x 1.40mm x 48T)	05-ON	3	M169.STP51
303B	Reverse Brake (OEM) (145.8mm ID x 1.20mm x 42T) .	05-ON	3	M169.STP02
303B	Reverse Brake (Alto) (145.8mm ID x 1.20mm x 42T) .	05-ON	3	M169.STP52

ILL NO.	DESCRIPTION	YEARS	QTY	PART NO
PRESSURE PLATES				
SPRINGS & CIRCLIPS				
FILTERS				
450D	Pick Up Filter (OEM)	05-ON	1	M169.FIL01
450D	Pick Up Filter (Aftermarket)	05-ON	1	M169.FIL02
451A	Cone Filter, Case to Case	05-ON	2	M169.FIL03
BUSHINGS				
THRUST WASHERS & BEARINGS				
690A	Bearing, Secondary Front	05-ON	1	M169.BE04
691A	Bearing, Idler Gear Front	05-ON	1	M169.BE06
692A	Bearing, Primary Front	05-ON	1	M169.BE05
693A	Bearing, Differential L/Hand	05-ON	1	M169.BE07
694A	Bearing, Differential R/Hand	05-ON	1	M169.BE07
695B	Bearing, Output Drum Support .	05-ON	1	M169.BE08
696C	Bearing, Primary Rear	05-ON	1	M169.BE02
697C	Bearing & Support Assembly, Idler Gear Rear	05-ON	1	M169.BE03
698C	Bearing, Secondary Rear	05-ON	1	M169.BE01
ELECTRICAL COMPONENTS				
700D	Solenoid, Primary Control (OEM)	05-ON	1	M215.SOL02
	(Bosch OEM)	05-ON	1	M215.SOL12
701D	Solenoid, Clutch Control (OEM)	05-ON	1	M215.SOL02
	(Bosch OEM)	05-ON	1	M215.SOL12
702D	Solenoid, Lock Up (OEM)	05-ON	1	M215.SOL01
	(Bosch OEM)	05-ON	1	M215.SOL11
703D	Solenoid, Secondary Control (OEM)	05-ON	1	M215.SOL02
	(Bosch OEM)	05-ON	1	M215.SOL12
NI	Electro Plate/TCM Repair	05-ON	1	M169.ELE31
VALVE BODY PARTS				
750D	Valve Body, Various (OEM) (Vehicle Details Required)	05-ON	1	M169.VB5x
HARD PARTS				
808A	End Cap, Secondary Shaft (L/Hand)	05-ON	1	M169.CAP01
819B	Variator Assembly (2 x Pulley's & Drive Belt)	05-ON	1	M169.DRU01
820B	Drive Belt (Steel)	05-ON	1	RE09.CH01
821B	Nut, Secondary Shaft Locking ..	05-ON	1	M169.NUT02
822B	Nut, Primary Shaft	05-ON	1	M169.NUT01
827C	End Cap, Secondary Shaft (R/Hand)	05-ON	1	M169.CAP01



722.8

CVT FWD (Electronic Control)

ILL NO.	DESCRIPTION	YEARS	QTY	PART NO
HARD PARTS Cont...				
834D	Cover Plate for Pan Magnet (Use with M169.MAG01).....	05-ON	1	M169.RET01
835D	Magnet for Oil Pan (Standard) ..	05-ON	1	M169.MAG02
835D	Magnet for Oil Pan, (With Anti Bump Gel) Note: This part is placed into the oil pan and is designed to cure the following problem. When the 722.8 comes to a stop, there can be a bump into first, so Mercedes have produced a magnet filled with a special gel that gradually dissolves into the oil and should eliminate the bump.	05-ON	1	M169.MAG01
SPECIAL ITEMS				
TOOLS & MANUALS				
Click here to view special tools for this transmission				

ILL NO.	DESCRIPTION	YEARS	QTY	PART NO



AUTOMATIC CHOICE



THE AUTOMATIC TRANSMISSION PARTS WAREHOUSE