

6L80E, 6L90E

6 Speed RWD, AWD (Electronic Control)

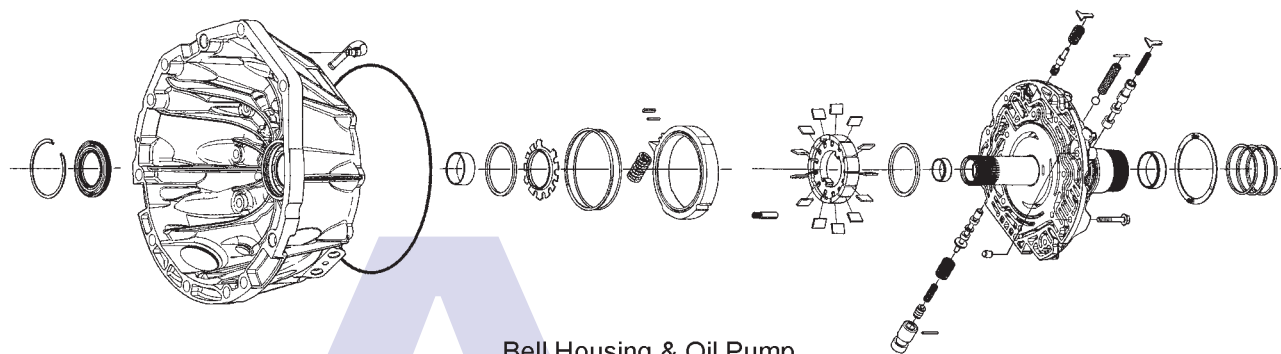


AUTOMATIC CHOICE



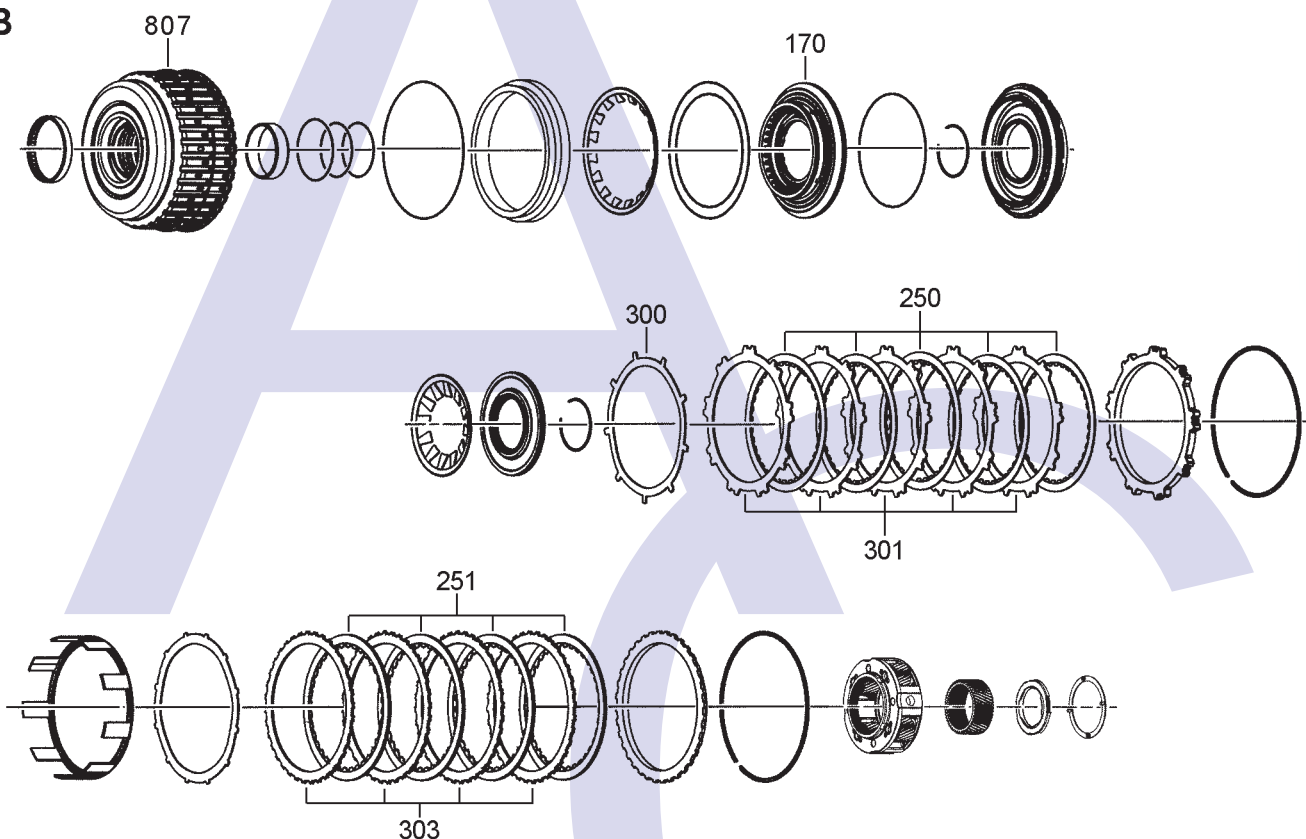
THE AUTOMATIC TRANSMISSION PARTS WAREHOUSE

A



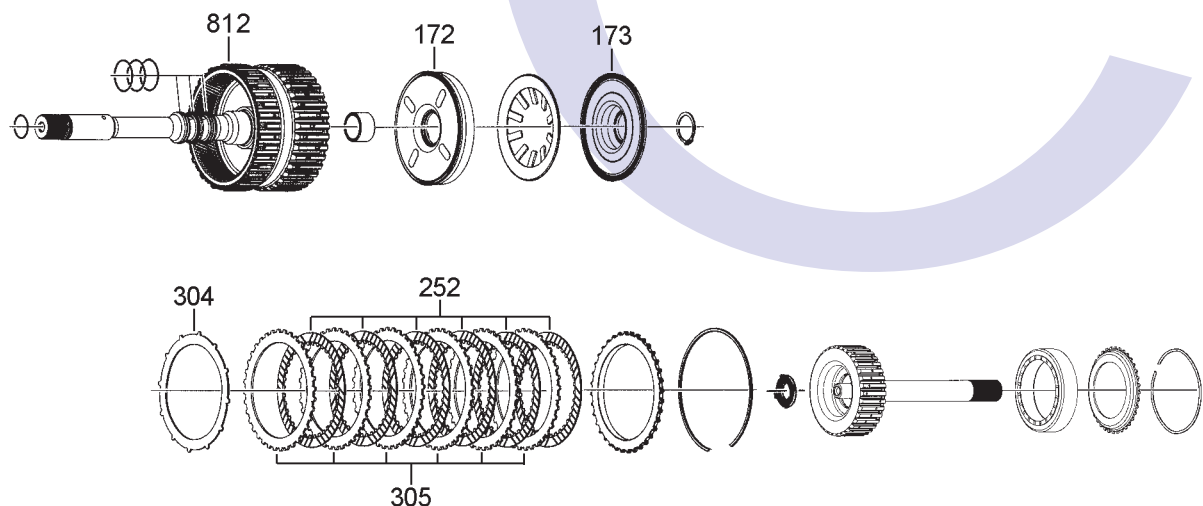
Bell Housing & Oil Pump

B



1-2-3-4 & 3-5-Reverse Clutch with Input Carrier Assembly

C



4-5-6 Clutch Assembly

6L80E, 6L90E 6 Speed RWD, AWD (Electronic Control)

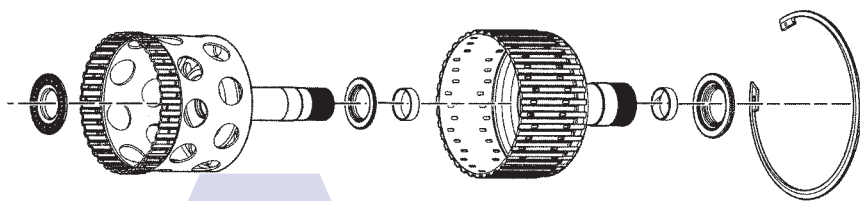


AUTOMATIC CHOICE



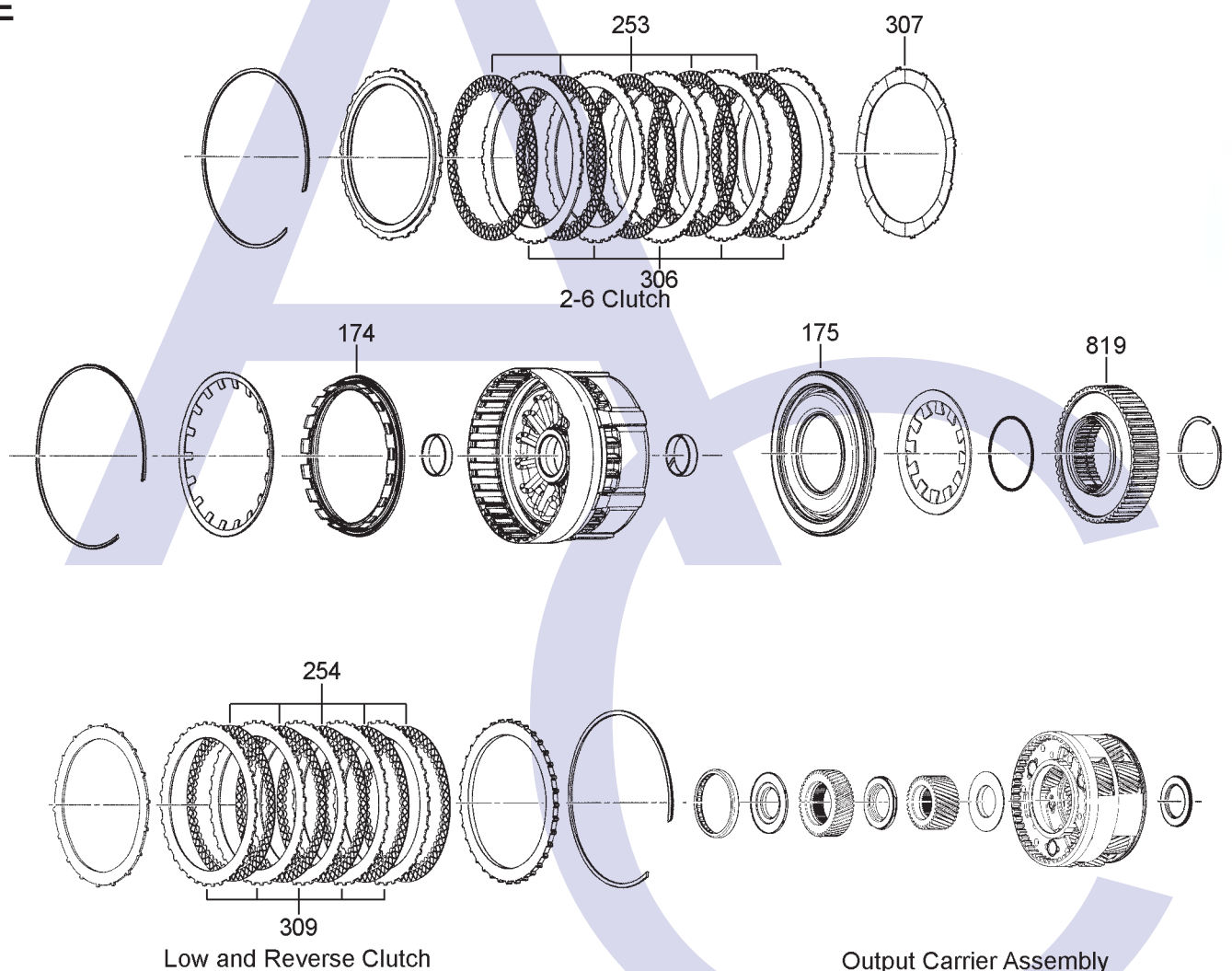
THE AUTOMATIC TRANSMISSION PARTS WAREHOUSE

D

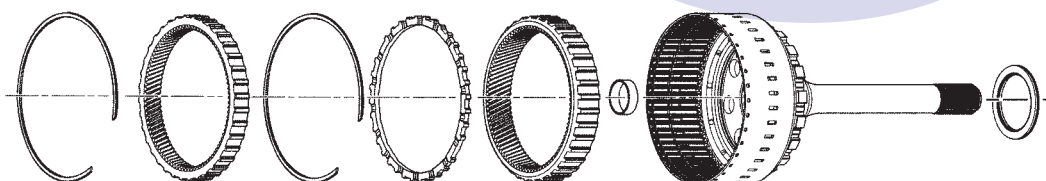


1-2-3-4 Clutch Hub, 2-6 & 3-5-Reverse Clutch Hub

E



F



Output Shaft Assembly

6L80E, 6L90E 6 Speed RWD, AWD (Electronic Control)

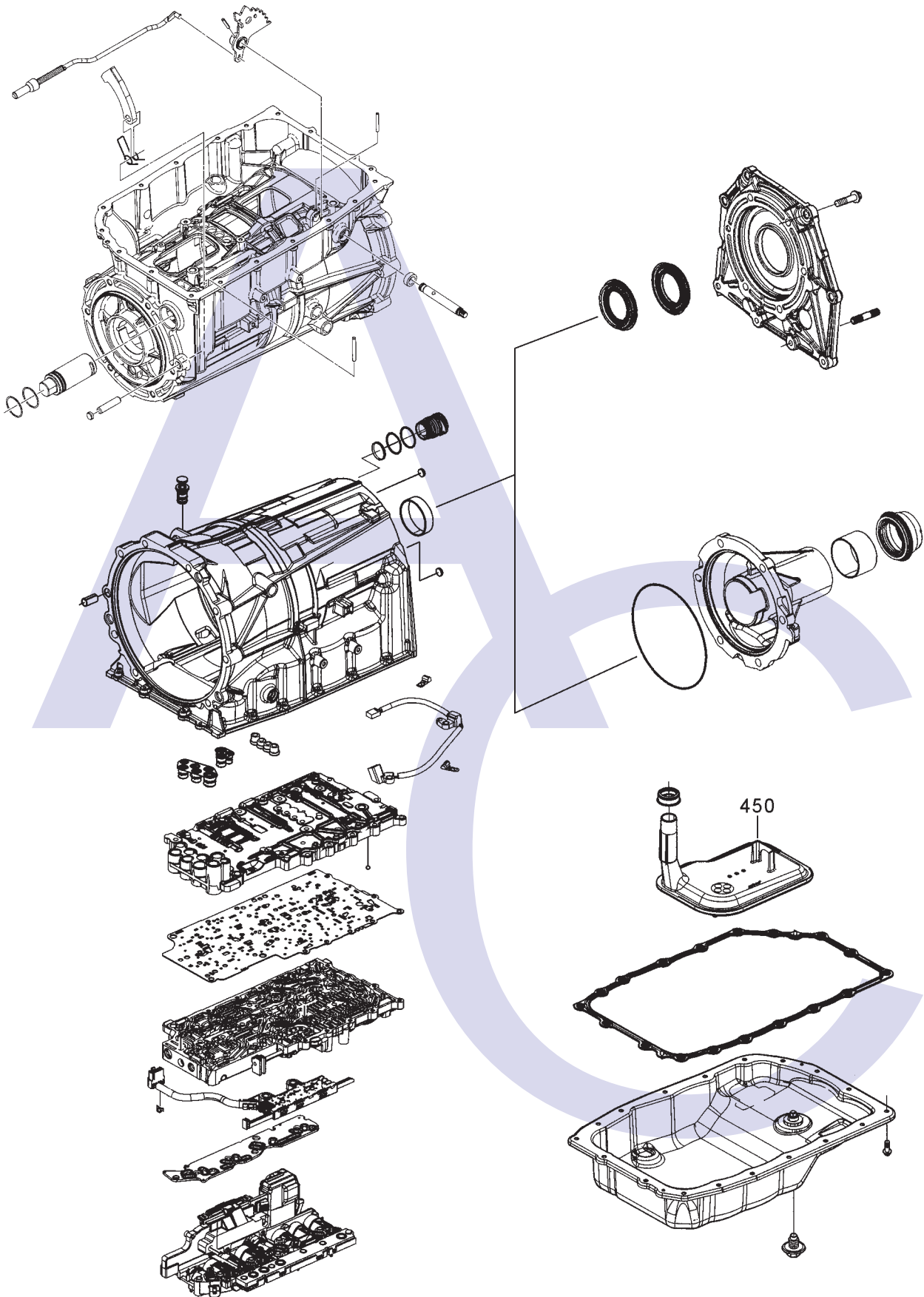


AUTOMATIC CHOICE



THE AUTOMATIC TRANSMISSION PARTS WAREHOUSE

G



Case Components, Valve Body, Oil Filter & Oil Pan

6L80E, 6L90E

6 Speed RWD, AWD (Electronic Control)



AUTOMATIC CHOICE



THE AUTOMATIC TRANSMISSION PARTS WAREHOUSE

ILL NO.	DESCRIPTION	YEARS	QTY	PART NO
KITS				
Kit	Overhaul Kit (Aftermarket) (6L80E)	06-ON	1	6L80E.OHK01
Kit	Overhaul Kit (Aftermarket) (6L90E)	06-ON	1	6L80E.OHK02
Kit	Overhaul Kit (Precision) (6L80E, 6L90E, With Pistons)...	06-ON	1	6L80E.OHK51
Kit	Overhaul Kit (Precision) (6L80E, 6L90E, Less Pistons) ..	06-ON	1	6L80E.OHK52
GASKETS				
RUBBER COMPONENTS				
METAL CLAD SEALS				
MOULDED PISTONS				
170B	Piston, 1-2-3-4 Clutch	06-ON	1	6L80E.PIS05
172C	Piston, 4-5-6 Clutch	06-ON	1	6L80E.PIS02
173C	Balance Piston 4-5-6 Clutch	06-ON	1	6L80E.PIS04
174E	Piston, 2-6 Clutch.....	06-ON	1	6L80E.PIS03
175E	Piston, Low & Reverse Clutch ..	06-ON	1	6L80E.PIS01
SEALING RINGS				
FRICTION PLATES				
250B	1-2-3-4 Clutch (183.6mm OD x 1.70mm x 36T) 06-ON		6	6L80E.FRP04
251B	3-5-Reverse Clutch (194.2mm OD x 1.80mm x 36T) 06-ON		5	6L80E.FRP03
252C	4-5-6 Clutch (129.5mm OD x 1.60mm x 36T) 06-ON		7	6L80E.FRP01
253E	2-6 Clutch (200mm OD x 1.83mm x 36T) .. 06-ON		6	6L80E.FRP02
254E	Low & Reverse Clutch (177.6mm OD x 1.62mm x 54T) 06-ON		6	6L80E.FRP05
STEEL PLATES				
300B	Waved Steel 1-2-3-4 Clutch	06-ON	1	6L80E.STP08
301B	1-2-3-4 Clutch (161.5mm ID x 1.70mm x 9T) ... 06-ON		6	6L80E.STP04
303B	3-5-Reverse Clutch (171mm ID x 2.74mm x 36T) 06-ON		5	6L80E.STP03
304C	Waved Steel 4-5-6 Clutch	06-ON	1	6L80E.STP06
305C	4-5-6 Clutch (108mm ID x 2.24mm x 36T) 06-ON		7	6L80E.STP01
306E	2-6 Clutch (169.5mm ID x 2.30mm x 24T) . 06-ON		6	6L80E.STP02

ILL NO.	DESCRIPTION	YEARS	QTY	PART NO
STEEL PLATES Cont...				
307E	Waved Steel 2-6 Clutch	06-ON	1	6L80E.STP07
309E	Low & Reverse Clutch (152.6mm ID x 1.73mm x 36T) . 06-ON		6	6L80E.STP05
PRESSURE PLATES				
SPRINGS & CIRCLIPS				
FILTERS				
450G	Filter, Oil Pan	06-ON	1	6L80E.FIL01
450G	Filter, Oil Pan (6L50E, 6L80E, 6L90E)	06-ON	1	6L80E.FIL02
450G	Filter, Oil Pan (6L80E, Shallow Pan)	06-ON	1	6L80E.FIL03
BANDS				
BUSHINGS				
THRUST WASHERS & BEARINGS				
ELECTRICAL COMPONENTS				
VALVE BODY PARTS				
HARD PARTS				
807B	Drum, 1-2-3-4, 3-5/Rev Clutch.....	06-ON	1	6L80E.DRU01
812C	Drum & Input Shaft, (4-5-6 Clutch)	06-ON	1	6L80E.DRU02
819E	One Way Clutch Assy, Low	06-ON	1	6L80E.OWC01
SPECIAL ITEMS				
TOOLS & MANUALS				
NI	6L80E Technicians Guide (OEM)	06-ON		6L80E.MAN01
NI	ATSG Rebuild Manual	06-ON		6L80E.MAN02