

62TE

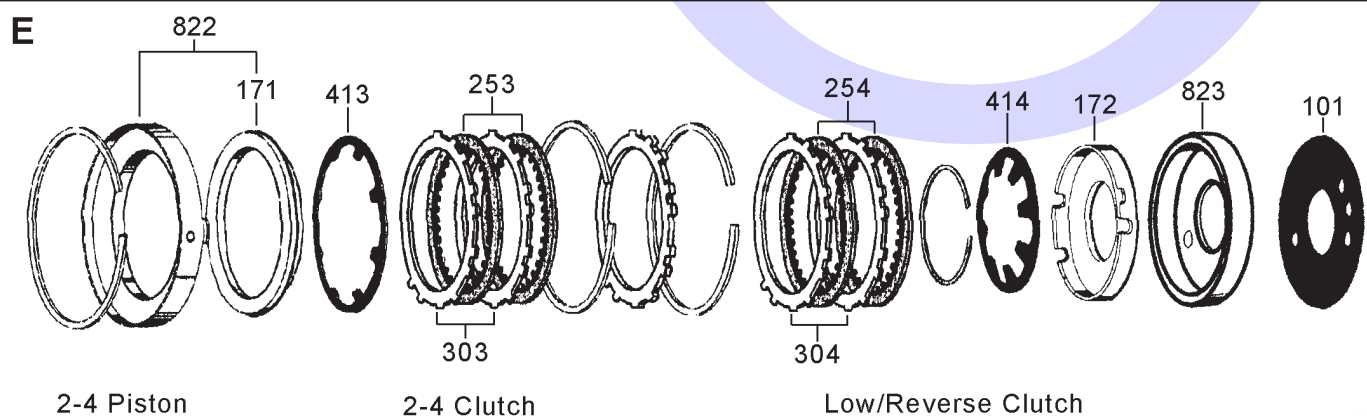
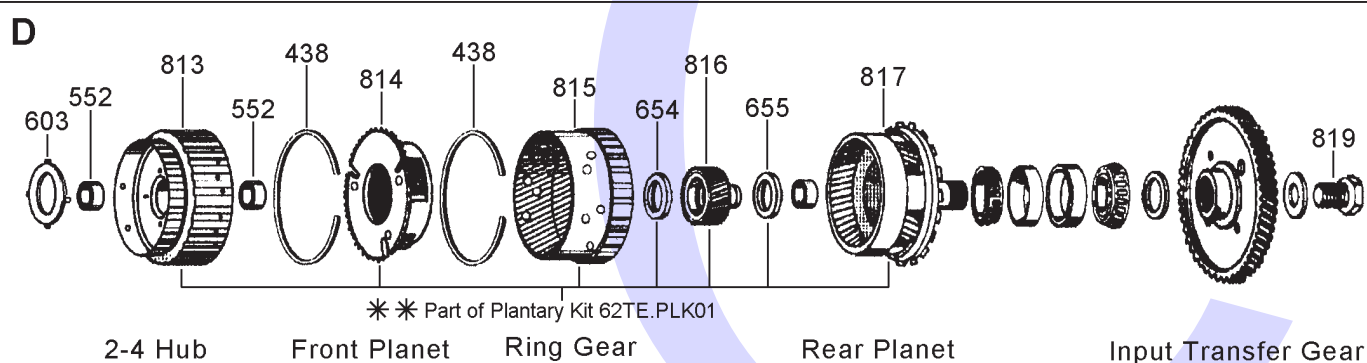
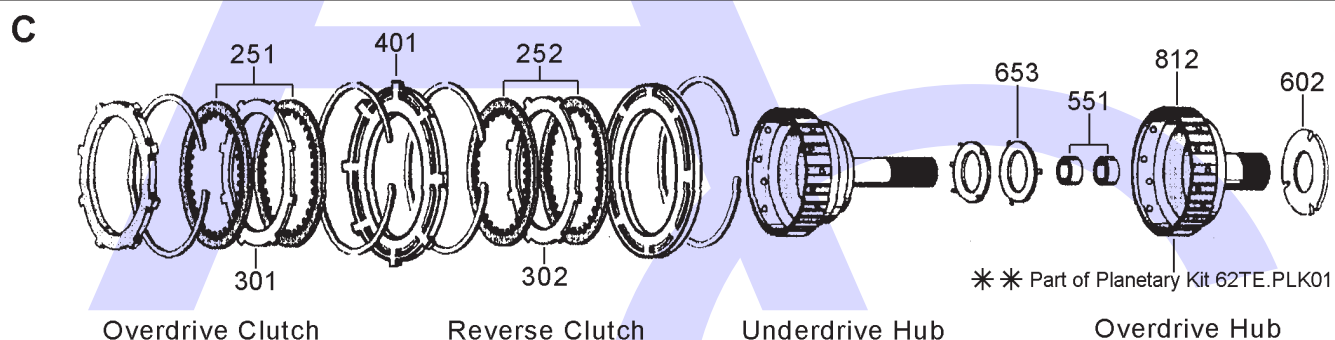
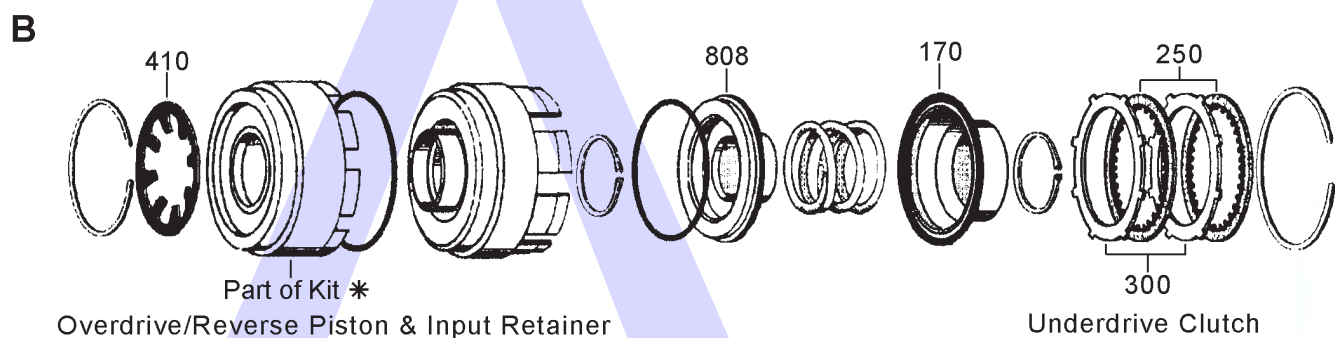
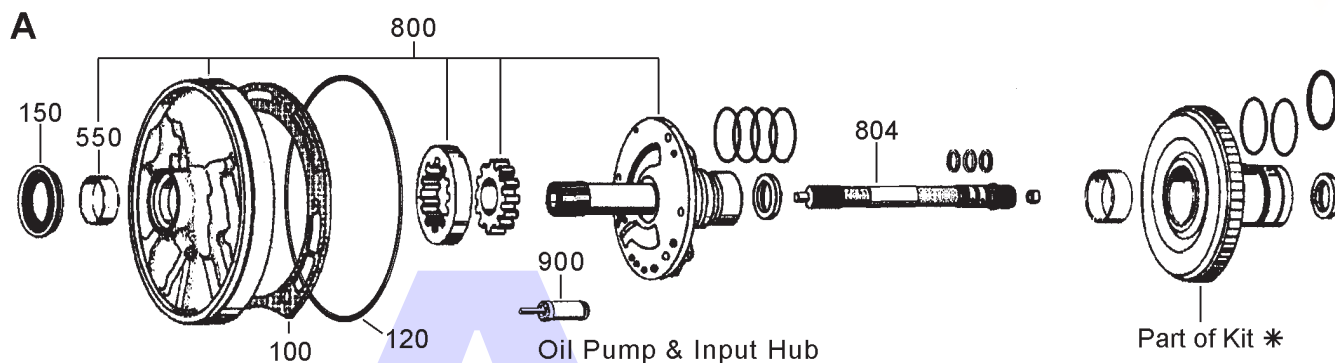
6 Speed FWD/AWD (Electronic Control) 2007-



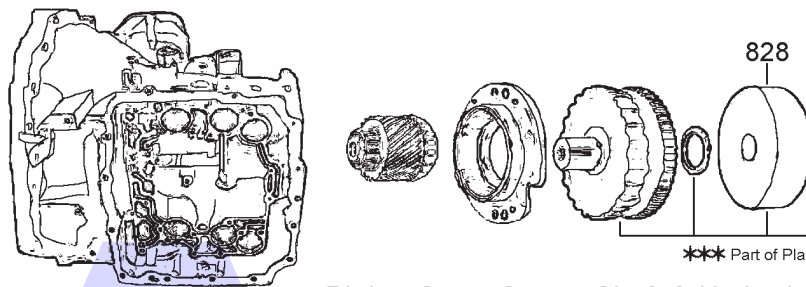
AUTOMATIC CHOICE



THE AUTOMATIC TRANSMISSION PARTS WAREHOUSE

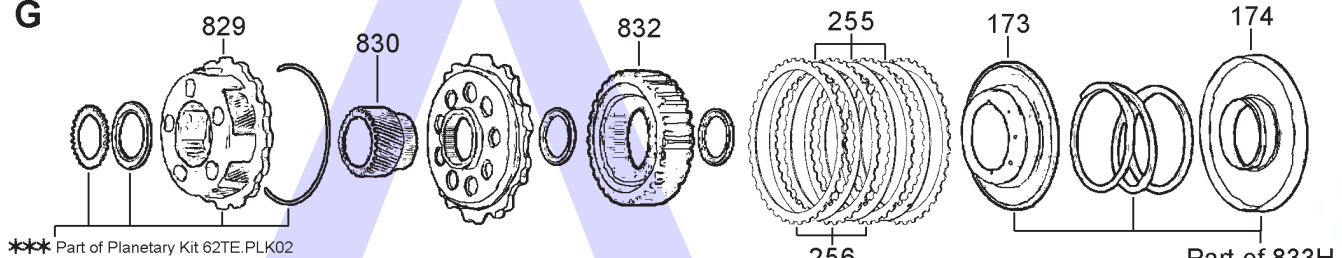


F



Pinion Gear, Output Shaft & Underdrive Ring Gear

G

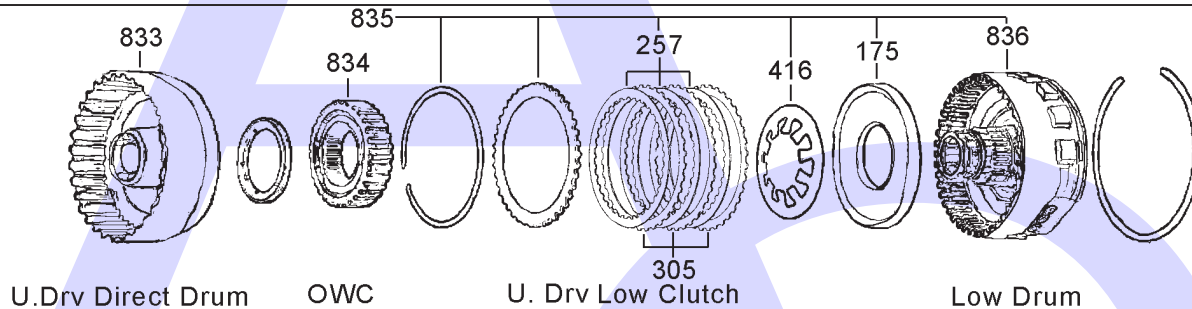


Planetary, Sun Gear & Hub

U.Drv Direct Clutch

Part of 833H

H



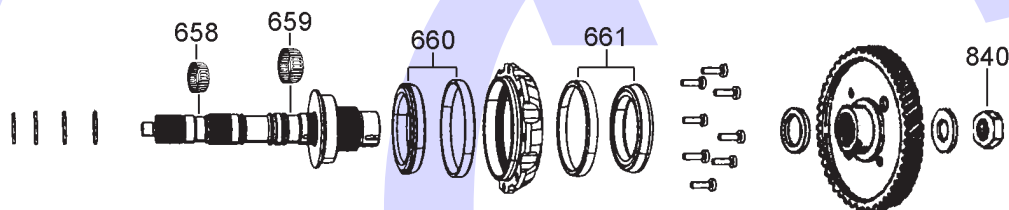
U.Drv Direct Drum

OWC

U. Drv Low Clutch

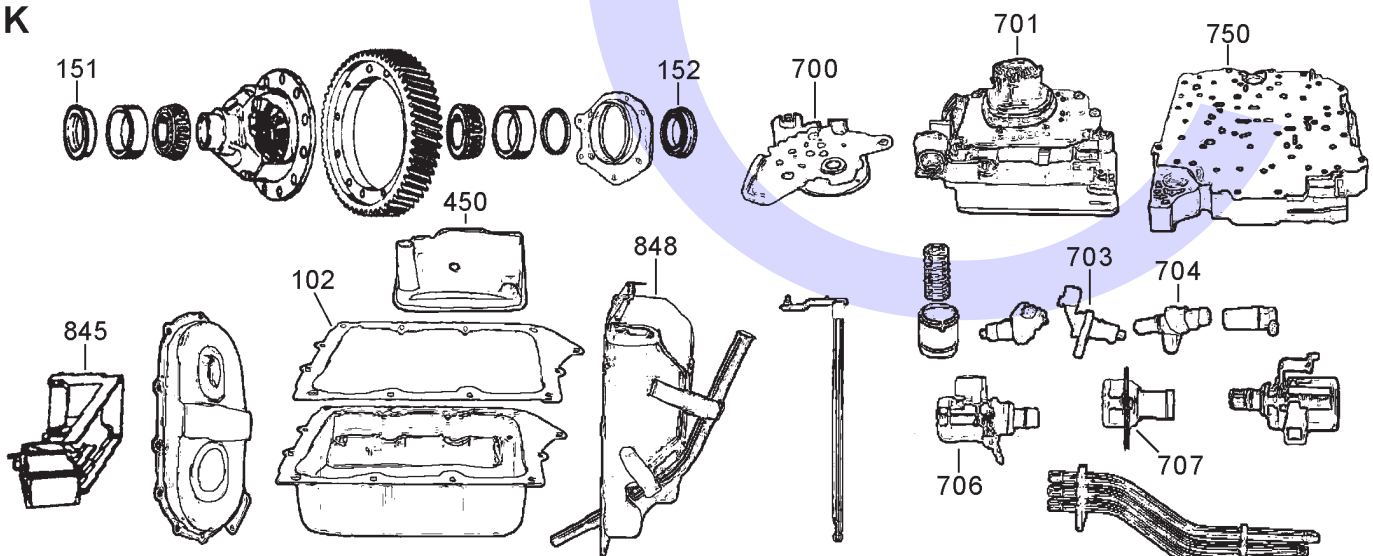
Low Drum

J



Transfer Shaft & Output Transfer Gear

K



Diff, Oil Pans, Valve Body, Sensors, Solenoids Etc.

62TE

6 Speed FWD/AWD (Electronic Control) 2006-



AUTOMATIC CHOICE



THE AUTOMATIC TRANSMISSION PARTS WAREHOUSE

ILL NO.	DESCRIPTION	YEARS	QTY	PART NO
KITS				
Kit	Overhaul Kit (Transtec) (Without Pistons).....	06-ON	1	62TE.OHK01
Kit	Overhaul Kit (Transtec) (With Pistons).....	06-ON	1	62TE.OHK02
Kit	Overhaul Kit (Precision) (With Pistons).....	06-ON	1	62TE.OHK52
GASKETS				
100A	Pump to Case	06-ON	1	62TE.GAS03
101E	Gasket, Low/Reverse Piston Retainer	06-ON	1	A604.GAS08
102K	Oil Pan to Case.....	06-ON	1	62TE.GAS01
NI	Valve Body Cover to Case.....	06-ON	1	62TE.GAS02
NI	V.B. Separator Plate to Case.....	06-ON	1	62TE.GAS54
NI	V.B. Separator Plate to V.B.....	06-ON	1	62TE.GAS55
RUBBER COMPONENTS				
120A	'O' Ring Pump Outer	06-ON	1	A404.OR01
METAL CLAD SEALS				
150A	Pump to Converter.....	06-ON	1	62TE.MCS01
151K	Drive shaft seal Right Hand	06-ON	1	A404.MCS02
152K	Drive shaft seal Left Hand.....	06-ON	1	A404.MCS02
MOULDED PISTONS				
Kit	Moulded Piston (Precision).....	06-ON	1	62TE.PISKIT51
170B	Piston-Moulded Lip and Spring Retainer	06-ON	1	A604.PIS01
171E	Piston 2-4 Brake (16.90mm Bonded Rubber)	06-ON	1	A604.PIS13
172E	Piston-Low & Reverse (Bonded 27mm High).....	06-ON	1	A604.PIS07
173G	Piston Reduction Direct	06-ON	1	62TE.PIS03
174G	Piston Reduction Direct	06-ON	1	62TE.PIS01
175H	Piston Reduction Low	06-ON	1	62TE.PIS02
SEALING RINGS				
Kit	Sealing Ring (Precision®).....	06-ON	1	62TE.SRK51
FRICTION PLATES				
250B	Underdrive Clutch (138mm OD x 1.80mm x 28T) ..	06-ON	4	A604.FRP01
250B	Underdrive Clutch (Alto) (138mm OD x 1.80mm x 28T) ..	06-ON	4	A604.FRP51
251C	Overdrive Clutch (138mm OD x 1.80mm x 28T) ..	06-ON	4	A604.FRP01
251C	Overdrive Clutch (Alto) (138mm OD x 1.80mm x 28T) ..	06-ON	4	A604.FRP51
252C	Reverse Clutch (138mm OD x 1.80mm x 28T) ..	06-ON	2	A604.FRP01
252C	Reverse Clutch (Alto) (138mm OD x 1.80mm x 28T) ..	06-ON	2	A604.FRP51
253E	2-4 Clutch (154mm OD x 2.15mm x 32T) ..	06-ON	4	A604.FRP02
253E	2-4 Clutch (Alto) (154mm OD x 2.15mm x 32T) ..	06-ON	4	A604.FRP52
254E	Low/Reverse Clutch (154mm OD x 1.80mm x 32T) ..	06-ON	5	A604.FRP03

ILL NO.	DESCRIPTION	YEARS	QTY	PART NO
FRICTION PLATES Cont...				
255G	Underdrive Direct Clutch (1 Sided Internal Teeth) (113mm OD x 1.52mm x 29T)...	06-ON	6	62TE.FRP04
256G	Underdrive Direct Clutch (1 Sided External Teeth) (92.30mm ID x 1.52mm x 30T) .	06-ON	6	62TE.FRP05
257H	Underdrive Low Clutch (121mm OD x 1.82mm x 31T) ..	06-ON	3	62TE.FRP06
STEEL PLATES				
Kit	Steel Plate Kit	06-ON	1	62TE.STK51
300B	Underdrive Clutch (115mm ID x 1.75mm x 8T)	06-ON	4	A604.STP01
301C	Overdrive Clutch (115mm ID x 2.00mm x 8T)	06-ON	3	62TE.STP02
302C	Reverse Clutch (115mm ID x 1.75mm x 8T)	06-ON	1	A604.STP01
303E	2-4 Clutch (134mm ID x 2.51mm x 16/24T) .	06-ON	4	62TE.STP04
303E	2-4 Clutch (134mm ID x 2.54mm x 14T)	06-ON	4	A604.STP02
304E	Low Reverse Clutch (134mm ID x 1.70mm x 16/24T) .	06-ON	5	62TE.STP06
304E	Low Reverse Clutch (134mm ID x 1.75mm x 14T)	06-ON	5	A604.STP03
305H	Underdrive Low Clutch (105mm ID x 1.73mm x 42T)	06-ON	3	62TE.STP08
PRESSURE PLATES				
401C	Overdrive/Reverse Clutch.....	06-ON	1	62TE.PP03
SPRINGS & CIRCLIPS				
410B	Diaphragm Spring O. Drive/Rev (125mm O.D.)	06-ON	1	A604.DIA03
413E	Diaphragm Spring 2/4 Clutch (165mm OD)	06-ON	1	A604.DIA02
414E	Diaphragm Spring Low / Rev (Bonded Design).....	06-ON	1	A604.DIA04
416H	Diaphragm Spring, Underdrive/Low Clutch.....	06-ON	1	62TE.DIA05
438D	Snap Ring-Front Planet to Ring gear (Front & Rear)	06-ON	2	A604.CIR06
FILTERS				
450K	Pick Up Filter (OEM)	06-ON	1	62TE.FIL01
450K	Pick Up Filter (AM).....	06-ON	1	62TE.FIL11
BUSHINGS				
Kit	Bushing Kit.....	06-ON	1	A604.BK02
550A	Bush, Pump to Converter.....	06-ON	1	62TE.BUS01
551C	Overdrive Clutch Hub (5 Pack) (Sonnax Replaces Both OEM) (Housing ID 23.901mm).....	06-ON	1	A604.BUS11
552D	Sun Gear & 2/4 Clutch Hub Assy (28.96mm OD)	06-ON	2	A604.BUS04
553D	Rear Planetary (31.115mm OD) 06-ON	06-ON	1	A604.BUS05

62TE

6 Speed FWD/AWD (Electronic Control) 2007-



ILL NO.	DESCRIPTION	YEARS	QTY	PART NO
THRUST WASHERS & BEARINGS				
602C	Washer Overdrive Clutch Hub (3 Slot Selective 0.91mm).....	06-ON	1	A604.THW01
602C	Washer Overdrive Clutch Hub (3 Slot Selective 1.15mm).....	06-ON	1	A604.THW02
602C	Washer Overdrive Clutch Hub (3 Slot Selective 1.35mm).....	06-ON	1	A604.THW03
602C	Washer Overdrive Clutch Hub (3 Slot Selective 1.80mm).....	06-ON	1	A604.THW04
602C	Washer Overdrive Clutch Hub (3 Slot Selective 2.25mm).....	06-ON	1	A604.THW05
602C	Washer Overdrive Clutch Hub (3 Slot Selective 2.47mm).....	06-ON	1	A604.THW06
602C	Washer Overdrive Clutch Hub (3 Slot Selective 2.90mm).....	06-ON	1	A604.THW07
602C	Washer Overdrive Clutch Hub (3 Slot Selective 3.20mm).....	06-ON	1	A604.THW08
603D	Washer Sun Gear/Clutch Hub (4 Tabs).....	06-ON	1	A604.THW13
653C	Bearing, Hub to Underdrive Drum.....	06-ON	1	62TE.BE03
654D	Bearing Front Planet to RearSun Gear (53.35mm x 34.50mm).....	06-ON	1	A604.BE02
655D	Bearing Rear Sun Gear to Rear Planet.....	06-ON	1	A604.BE03
NI	Bearing Front Planet (Must be Disassembled).....	06-ON	1	A604.BE03
658J	Needle Bearing, Transfer Shaft (Front 23mm I.D.).....	06-ON	1	62TE.BE04
659J	Needle Bearing, Transfer Shaft (Rear/Low Clutch 26mm I.D.)	06-ON	1	62TE.BE05
660J	Taper Bearing, Transfer Shaft, (Front).....	06-ON	1	62TE.BE01
661J	Taper Bearing, Transfer Shaft (Rear).....	06-ON	1	62TE.BE01
ELECTRICAL COMPONENTS				
Kit	Solenoid Pack Repair Kit.....	06-ON	1	45RFE.SOL05
700K	Transmission Range Sensor (DTR).....	06-ON	1	62TE.ELE01
701K	Solenoid Block Assembly.....	06-ON	1	62TE.SOL01
703K	Transfer Speed Sensor.....	06-ON	1	62TE.ELE03
704K	Input Speed Sensor.....	06-ON	1	62TE.ELE04
704K	Output Speed Sensor.....	06-ON	1	62TE.ELE04
706K	VFS Solenoid (TCC).....	06-ON	1	62TE.SOL02
707K	Switch, Pressure Transducer	06-ON	1	62TE.ELE02
VALVE BODY PARTS				
750K	Valve Body (Rebuild) (With Solenoids).....	06-ON	1	62TE.VB01
750K	Valve Body (Rebuild) (Without Solenoids).....	06-ON	1	62TE.VB02
HARD PARTS				
Kit *	Input Hub Assembly, With OD, Reverse Input Piston and 'O' Rings.....	06-ON	1	62TE.HUB02
Kit **	Planetary Kit, Front & Rear (See illustration for contents)	06-ON	1	62TE.PLK01
Kit ***	Planetary Kit, Underdrive Compounder (See illustration for contents)	06-ON	1	62TE.PLK02
800A	Pump Complete.....	06-ON	1	62TE.PUM01
804A	Input Shaft, (OEM).....	06-ON	1	62TE.SH01
808B	Piston-Input C. Drum/U. Drive (19.05mm Tall).....	06-ON	1	A604.PIS09

ILL NO.	DESCRIPTION	YEARS	QTY	PART NO
HARD PARTS Cont...				
812C	O.D. Clutch Hub 29.50mm (OEM).....	06-ON	1	A604.HUB05
812C	O.D. Clutch Hub 29.50mm (Aftermarket).....	06-ON	1	A604.HUB15
813D	Sun Gear & 2/4 Clutch Hub (OEM).....	06-ON	1	A604.DRU02
813D	Sun Gear & 2/4 Clutch Hub (AM).....	06-ON	1	A604.DRU12
814D	Front Planet Assy (OEM).....	06-ON	1	A604.PL01
814D	Front Planet Assy (AM).....	06-ON	1	A604.PL11
815D	Annulus-Rear Planetary.....	06-ON	1	A604.HUB03
816D	Sun Gear-Rear.....	06-ON	1	A604.SUN01
817D	Planetary, Rear (5 Gear).....	06-ON	1	62TE.PL01
819D	Bolt, Input Transfer Gear.....	06-ON	1	62TE.NUT02
822E	Piston Retainer & Piston, 2-4 Clutch.....	06-ON	1	62TE.RET01
823E	Retainer, Low Reverse Clutch (A604/62TE).....	06-ON	1	A604.RET07
828F	Annulus, U.Drive/Compounder .	06-ON	1	62TE.GE01
829G	Planet Carrier, Underdrive/Compounder.....	06-ON	1	62TE.PL02
830G	Sun Gear, Underdrive/Compounder.....	06-ON	1	62TE.SUN01
832G	Compounder Hub.....	06-ON	1	62TE.HUB03
833H	Overdrive Direct Drum Assembly (Used).....	06-ON	1	62TE.DRU01
834H	Sprag Assembly, Low Compounder.....	06-ON	1	62TE.OWC01
835H	Drum Kit, Low Clutch Complete, Used (Includes Piston, Retainer, Frictions, Steels & Nut).....	06-ON	1	62TE.DRU04
836H	Retainer, Low Clutch (AM) With Teflon® Coated Ring Lands For Durability.....	06-ON	1	62TE.DRU02
840J	Nut, Transfer Gear Shaft.....	06-ON	1	62TE.NUT01
845K	Oil Deflector, Under Transfer Gear Cover (Plastic).....	06-ON	1	62TE.DAM01
848K	Valve Body Cover.....	06-ON	1	62TE.PAN01
SPECIAL ITEMS				
900A	Cooler Bypass Valve (In Case Under Pump).....	06-ON	1	A604.VA08
TRANSMISSION UNITS				
Unit	Exchange Transmission, Diesel	06-ON	1	62TE.TRAN01
Unit	Exchange Transmission, Petrol (Transmission Code Required) .	06-ON	1	62TE.TRAN02
Unit	Exchange Transmission, Petrol (Transmission Code Required) .	06-ON	1	62TE.TRAN03
TOOLS & MANUALS				
NI	ATSG Repair Manual (On CD)..	06-ON	AR	62TE.MAN01
NI	Technical Manual (Chrysler/Dodge).....	06-ON	AR	62TE.MAN02
Click here to view special tools for this transmission				

AUTOMATIC CHOICE



THE AUTOMATIC TRANSMISSION PARTS WAREHOUSE