

ZF 4HP18E (ALFA, FIAT & LANCIA) Code: 1050 004 xxx

4 SPEED FWD (Electronic Control)

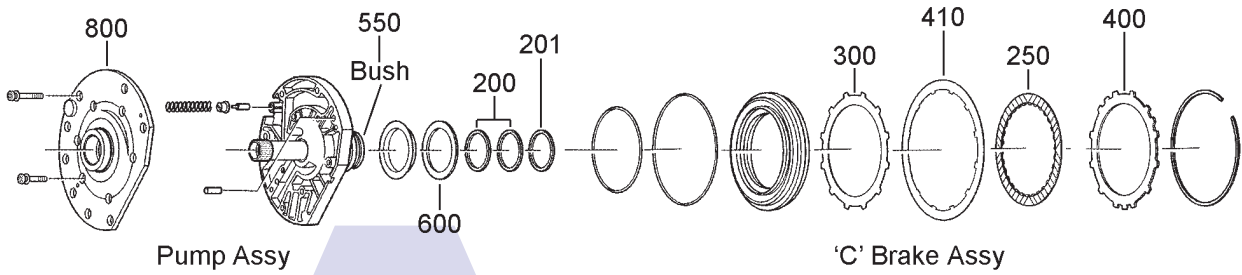


AUTOMATIC CHOICE



THE AUTOMATIC TRANSMISSION PARTS WAREHOUSE

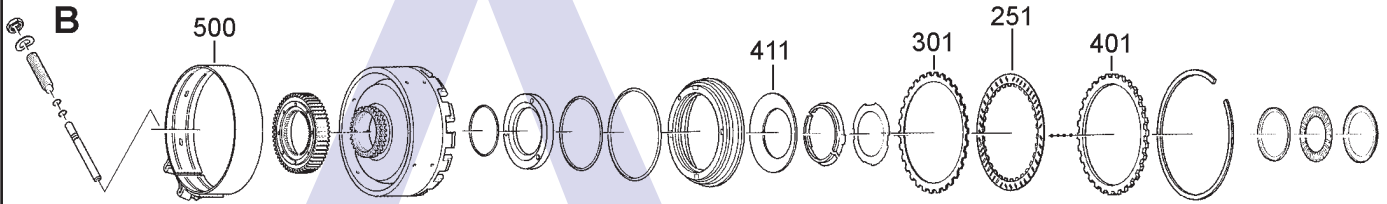
A



Pump Assy

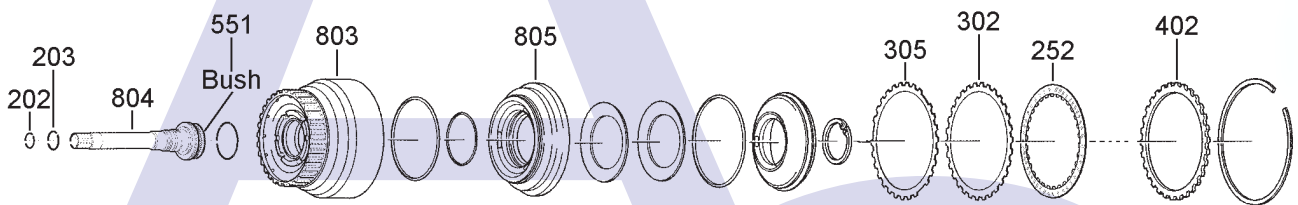
'C' Brake Assy

B



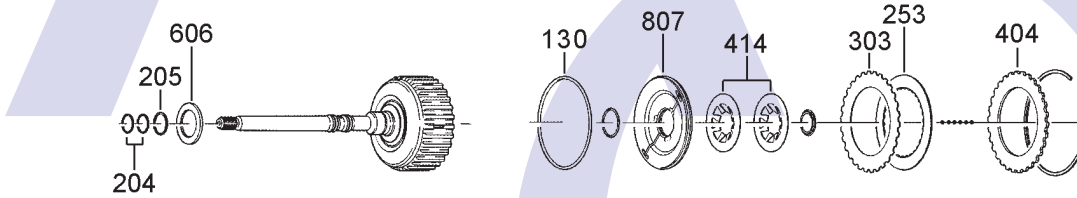
'B' Clutch Assy

C



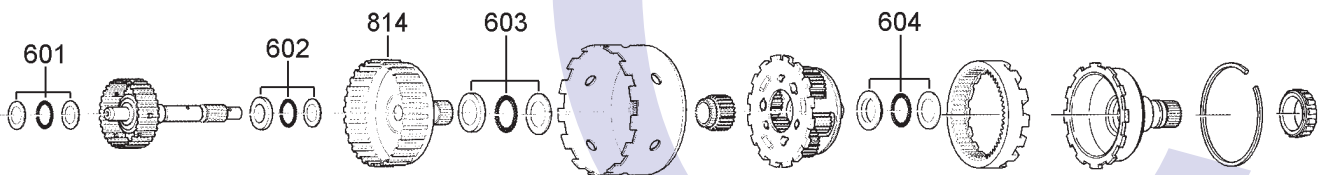
'A' Clutch Assy

D



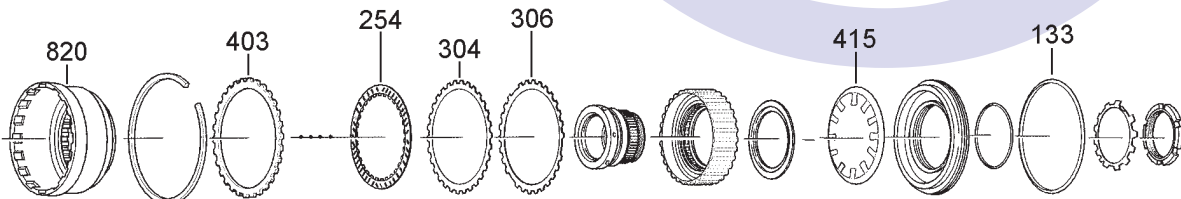
'E' Clutch Assy

E



Intermediate Shaft, Sun Gear Shaft, Drive Shell, Planetary & Output Shaft Assy's

F



'D' Brake Assy

ZF 4HP18E (ALFA, FIAT & LANCIA) Code: 1050 004 xxx 4 SPEED FWD (Electronic Control)

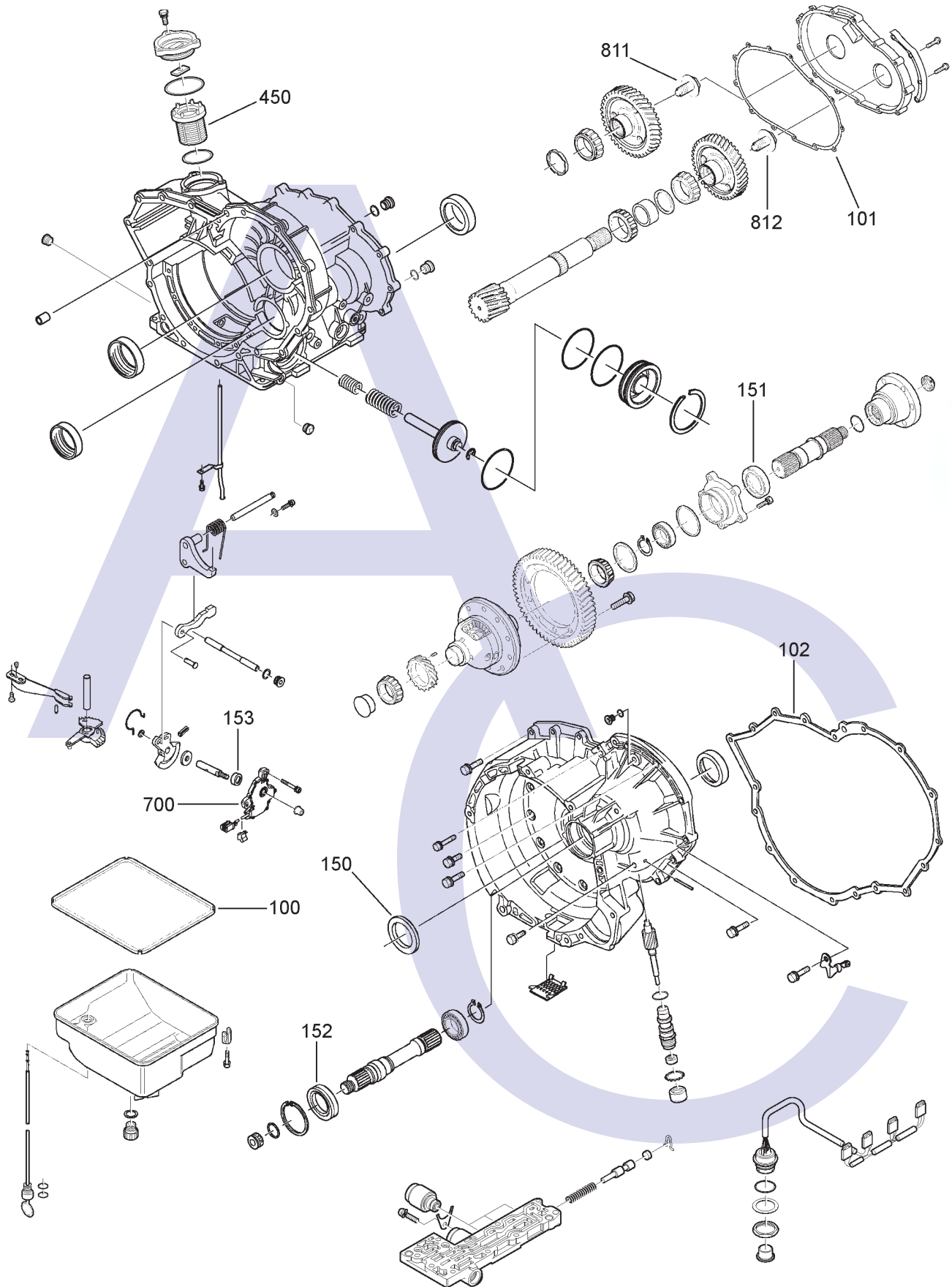


AUTOMATIC CHOICE



THE AUTOMATIC TRANSMISSION PARTS WAREHOUSE

G



Differential, Case & Valve Body Components

ZF 4HP18E (ALFA, FIAT & LANCIA) Code: 1050 004 xxx

4 SPEED FWD (Electronic Control)



AUTOMATIC CHOICE



THE AUTOMATIC TRANSMISSION PARTS WAREHOUSE

ILL NO.	DESCRIPTION	YEARS	QTY	PART NO
KITS				
GASKETS				
100G	Pan Gasket (OEM).....	92-ON	1	4HP18.GAS05
100G	Pan Gasket (AM)	92-ON	1	4HP18.GAS55
101G	Spur Gear Gasket.....	92-ON	1	4HP18.GAS02
102G	Maincase Gasket (OEM).....	92-ON	1	4HP18.GAS01
102G	Maincase Gasket (AM)	92-ON	1	4HP18.GAS51
RUBBER COMPONENTS				
130D	'O' Ring, 'E' Clutch Outer	92-ON	1	6HP19.OR01
133F	'O' Ring, 'D' Clutch Outer	92-ON	1	5HP19.OR11
METAL CLAD SEALS				
150G	Converter Seal.....	87-ON	1	4HP18.MCS01
151G	Diff Left Hand Side.....	92-ON	1	4HP18.MCS04
152G	Diff Right Hand Side	92-ON	1	4HP18.MCS05
153G	Selector Shaft	92-ON	1	CTX.MCS13
SEALING RINGS				
Kit	Sealing Ring Kit (OEM).....	92-ON	1	4HP18.SRK01
Kit	Sealing Ring Kit (Bryco).....	92-ON	1	4HP18.SRK02
200A	Stator Support (Front).....	92-ON	2	4HP18.SSR06
201A	Stator Support (Rear).....	92-ON	1	4HP14.SSR03
202C	Turbine Shaft Front (Small).....	92-ON	1	4HP18.SSR04
203C	Turbine Shaft Rear (Large).....	92-ON	1	4HP18.SSR07
204D	Motor Shaft Front (Plastic).....	92-ON	2	4HP18.SSR02
205D	Motor Shaft Rear (Large).....	92-ON	1	4HP18.SSR08
FRICTION PLATES				
Kit	Friction Kit.....	92-ON	1	4HP18.FRK01
Kit	Friction Kit (Alto)	92-ON	1	4HP18.FRK53
Kit	Friction Kit (Borg Warner)	87-ON	1	4HP18.FRK02
250A	'C' Brake (Borg Warner)	92-ON	3	3HP22.FRP23
251B	'B' Clutch (OEM)	92-ON	2-3	4HP18.FRP05
251B	'B' Clutch (Pattern).....	92-ON	2-3	4HP18.FRP15
252C	'A' Clutch (OEM)	92-ON	4-5	4HP18.FRP03
252C	'A' Clutch (Pattern).....	92-ON	4-5	4HP18.FRP12
253D	'E' Clutch (OEM)	92-ON	4-5	4HP18.FRP04
253D	'E' Clutch (Pattern).....	92-ON	4-5	4HP18.FRP14
253D	'E' Clutch (Alto)	92-ON	4-5	4HP18.FRP54
254F	'D' Brake (OEM).....	92-ON	5-6	4HP18.FRP02
254F	'D' Brake (Pattern).....	92-ON	5-6	4HP18.FRP12
STEEL PLATES				
Kit	Steel Plate Kit	92-ON	1	4HP18.STK01
Kit	Steel Plate Kit (Alto).....	92-ON	1	4HP18.STK51
300A	'C' Brake.....	92-ON	3	3HP22.STP03
301B	'B' Clutch.....	92-ON	2-3	4HP18.STP01
302C	'A' Clutch.....	92-ON	4-5	4HP18.STP01
303D	'E' Clutch.....	92-ON	4-5	4HP18.STP02
304F	'D' Brake.....	92-ON	5-6	4HP18.STP01
305C	'A' Clutch Waved Plate.....	92-ON	1	4HP18.STP03
306F	'D' Clutch Waved Plate	92-ON	1	4HP18.STP03

ILL NO.	DESCRIPTION	YEARS	QTY	PART NO
PRESSURE PLATES				
400A	'C' Brake Pressure Plate.....	92-ON	1	4HP18.PP01
401B	'B' Clutch Pressure Plate	92-ON	1	4HP18.PP02
402C	'A' Clutch Pressure Plate	92-ON	1	4HP18.PP02
403F	'D' Clutch Pressure Plate	92-ON	1	4HP18.PP02
404D	'E' Clutch Pressure Plate (Alto).....	87-ON	1	4HP18.PP03
SPRINGS & CIRCLIPS				
410A	'C' Brake Diaphragm Spring.....	92-ON	1	4HP18.DIA01
411B	'B' Clutch Diaphragm Spring.....	92-ON	1	4HP18.DIA02
414D	'E' Clutch Diaphragm Spring.....	92-ON	2	4HP18.DIA04
415F	'D' Brake Diaphragm Spring.....	92-ON	1	5HP19.DIA06
FILTERS				
450G	Filter.....	92-ON	1	4HP18.FIL01
BANDS				
500B	Band (OEM) Box Code:1050 000 011 Only... ..	92-ON	1	4HP18.BAN01
500B	Band (New) Box Code:1050 000 011 Only... ..	92-ON	1	4HP18.BAN11
BUSHES				
550A	Stator Support (Rear).....	92-ON	1	4HP18.BUS01
551C	Turbine Shaft (Bronze).....	92-ON	1	4HP14.BUS12
NI	Converter Bush.....	92-ON	1	4HP18.BUS03
ELECTRONIC COMPONENTS				
700G	Range Switch (Alfa) (Box Code:1050 004 010 Only)	92-ON	1	4HP18.ELE03
VALVE BODY PARTS				
NI	Spring Pressure Reg (Outer)	92-ON	1	5HP19.SPR03
NI	Encapulated Plastic Ball Valve (Fits in Main Valve Body)	92-ON	1	4HP22.VA01
NI	Orifice Plate 9In Vave Body) (2.20mm).....	92-ON	AR	4HP18.VA02
	(1.00mm).....	92-ON	AR	4HP18.VA03
	(1.40mm).....	92-ON	AR	4HP18.VA04
	(1.50mm).....	92-ON	AR	4HP18.VA05
THRUST WASHERS & BEARINGS				
600A	Selective Pump Thrust Washer (1.00mm Thick).....	92-ON	AR	4HP18.THW14
600A	Selective Pump Thrust Washer (1.20mm Thick).....	92-ON	AR	4HP18.THW13
600A	Selective Pump Thrust Washer (1.40mm Thick).....	92-ON	AR	4HP18.THW12
600A	Selective Pump Thrust Washer (1.60mm Thick).....	92-ON	AR	4HP18.THW11
600A	Selective Pump Thrust Washer (1.80mm Thick).....	92-ON	AR	4HP18.THW10
600A	Selective Pump Thrust Washer (2.00mm Thick).....	92-ON	AR	4HP18.THW09
600A	Selective Pump Thrust Washer (2.20mm Thick).....	92-ON	AR	4HP18.THW08
600A	Selective Pump Thrust Washer (2.40mm Thick).....	92-ON	AR	4HP18.THW07

ZF 4HP18E (ALFA, FIAT & LANCIA) Code: 1050 004 xxx 4 SPEED FWD (Electronic Control)



AUTOMATIC CHOICE



THE AUTOMATIC TRANSMISSION PARTS WAREHOUSE

ILL NO.	DESCRIPTION	YEARS	QTY	PART NO
THRUST WASHERS & BEARINGS Cont...				
600A	Selective Pump Thrust Washer (2.60mm Thick)	92-ON	AR	4HP18.THW06
600A	Selective Pump Thrust Washer (2.80mm Thick)	92-ON	AR	4HP18.THW05
600A	Selective Pump Thrust Washer (3.00mm Thick)	92-ON	AR	4HP18.THW04
600A	Selective Pump Thrust Washer (3.20mm Thick)	92-ON	AR	4HP18.THW03
600A	Selective Pump Thrust Washer (3.40mm Thick)	92-ON	AR	4HP18.THW02
600A	Selective Pump Thrust Washer (3.60mm Thick)	92-ON	AR	4HP18.THW01
601E	Thrust Bearing Kit ('E' Clutch to Int, Shaft)	92-ON	1	4HP18.TK01
602E	Thrust Bearing Kit (Int. Shaft to Sun Gear Shaft) ...	92-ON	1	4HP18.TK05
603E	Thrust Bearing Kit (Sun Gear Shaft to Drive Shell)	92-ON	1	4HP18.TK03
604E	Thrust Bearing Kit (Planetary to O. Shaft)	92-ON	1	5HP18.TK04
606D	Thrust Bearing 'A' to 'E' Clutch..	92-ON	1	4HP18.TOR04
HARD PARTS				
800A	Short Pump Assy	92-ON	1	4HP18.PUM01
803C	'A' Clutch Drum	92-ON	1	4HP18.DRU03
804C	Turbine Shaft	92-ON	1	4HP18.SH03
805C	'A' Clutch Piston	92-ON	1	4HP18.PIS01
807D	'E' Clutch Piston	92-ON	1	4HP18.PIS04
811G	Bolt Output Gear to O. Shaft.....	92-ON	1	4HP14.NUT01
812G	Bolt Output Gear - Pinion Shaft	92-ON	1	4HP18.NUT01
814E	Sun Gear Shaft	82-ON	1	5HP19.SH01
820F	Spider CL.Bell.....	92-ON	1	5HP19.PL01
NI	Cushion Spring 'C2' Servo (Pack of two).....	92-ON	1	4HP18.SER02
SPECIAL ITEMS				

ILL NO.	DESCRIPTION	YEARS	QTY	PART NO
---------	-------------	-------	-----	---------