

NISSAN RL4R01A (Nissan 1988-2001), (LTI TXI & TXII Taxi 1997-2006) 4 SPEED RWD (Hydraulic Control)

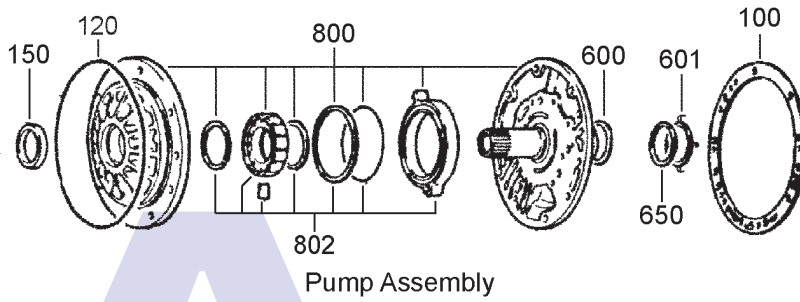


AUTOMATIC CHOICE



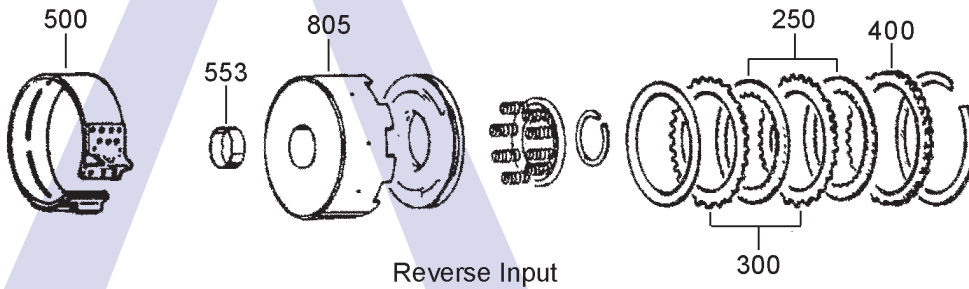
THE AUTOMATIC TRANSMISSION PARTS WAREHOUSE

A



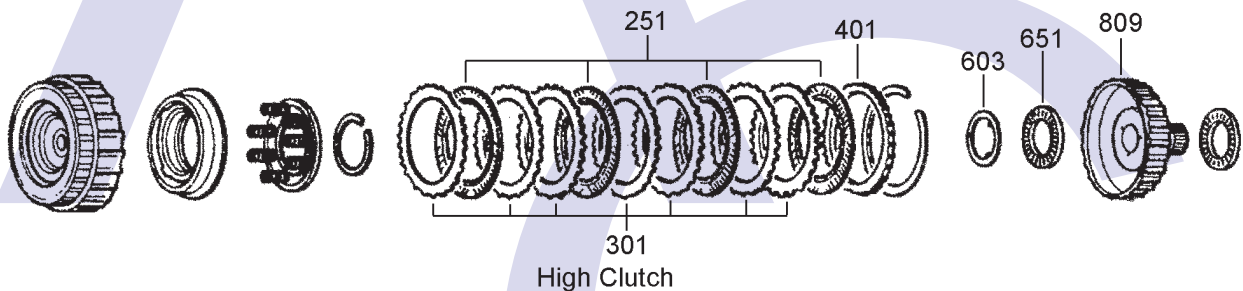
Pump Assembly

B



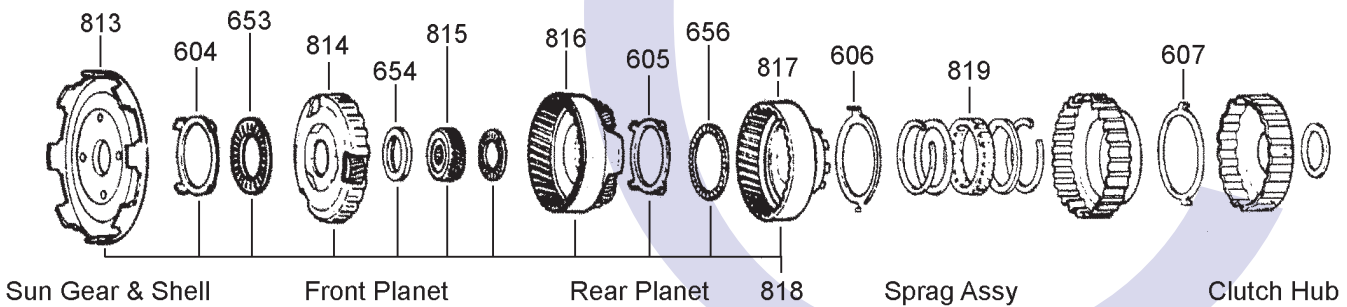
Reverse Input

C



High Clutch

D



Sun Gear & Shell

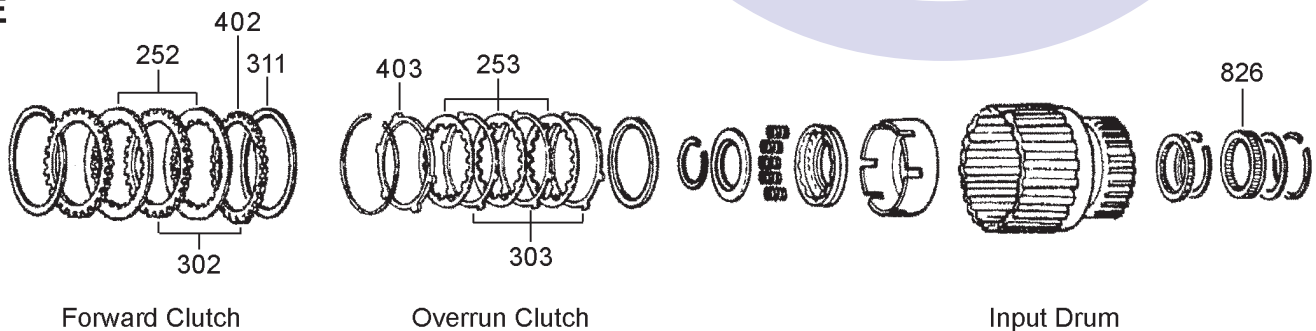
Front Planet

Rear Planet

Sprag Assy

Clutch Hub

E



Forward Clutch

Overrun Clutch

Input Drum

NISSAN RL4R01A (Nissan 1988-2001), (LTI TXI & TXII Taxi 1997-2006) 4 SPEED RWD (Hydraulic Control)

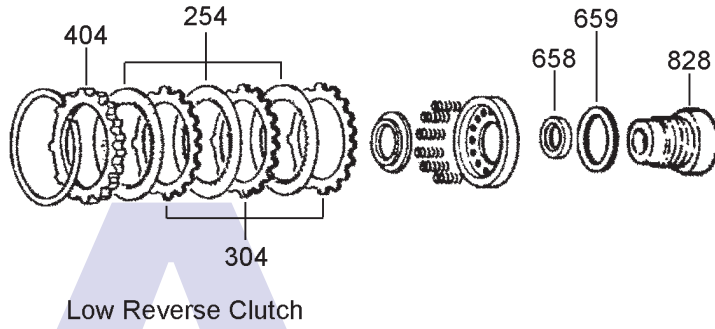


AUTOMATIC CHOICE



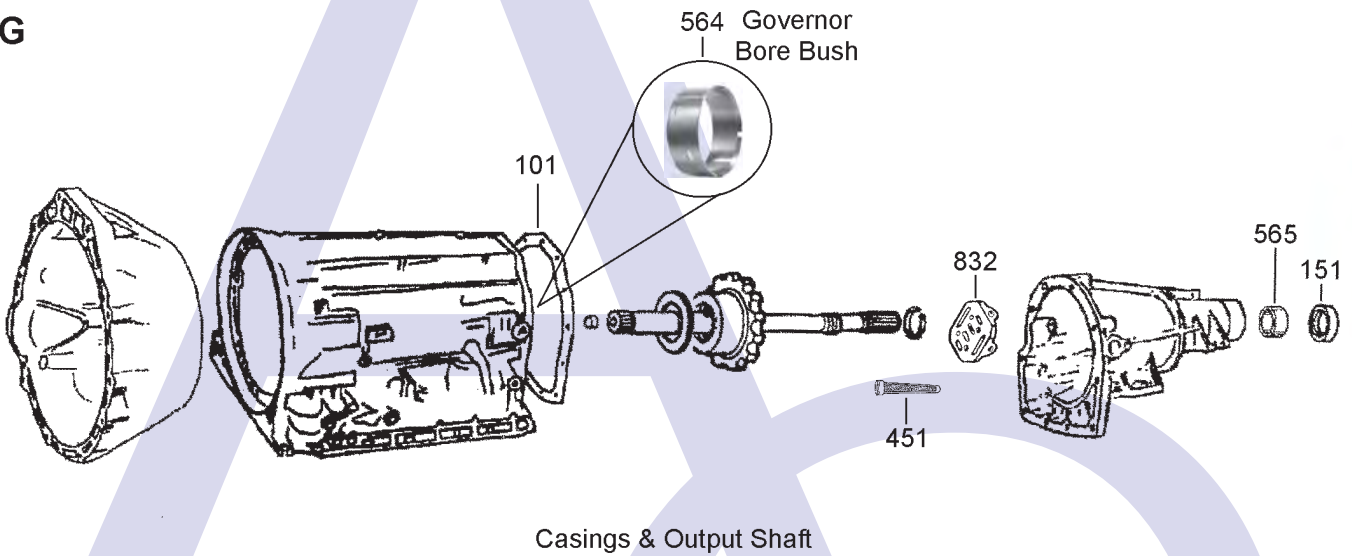
THE AUTOMATIC TRANSMISSION PARTS WAREHOUSE

F



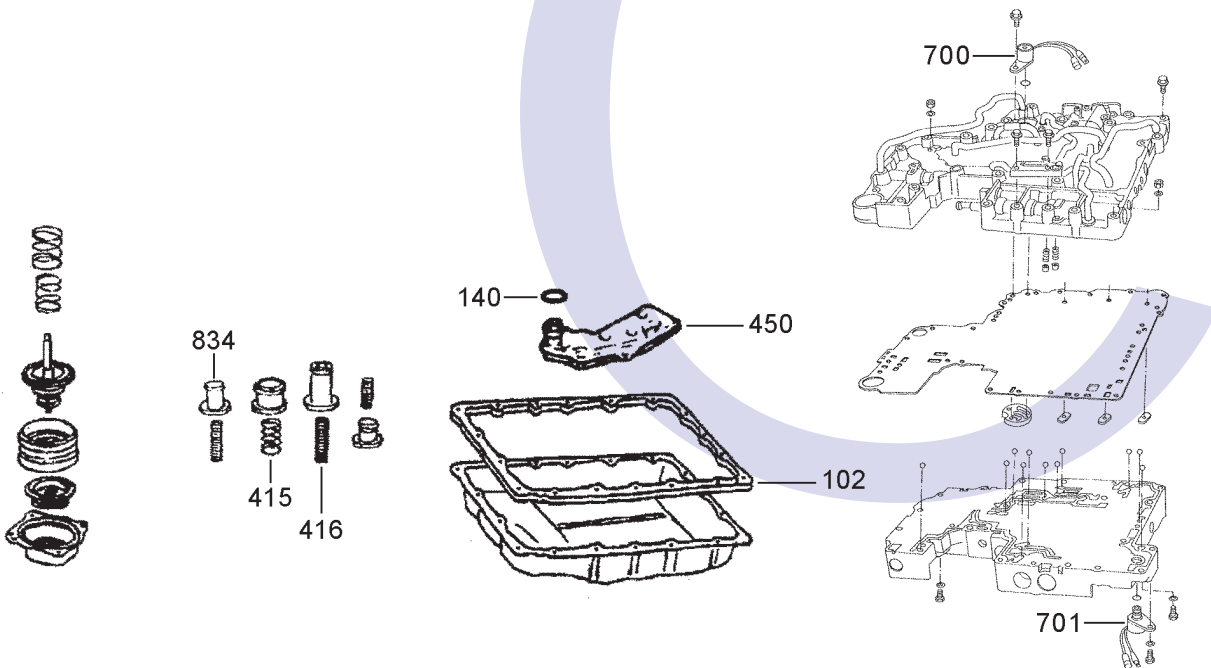
Low Reverse Clutch

G



Casings & Output Shaft

H



Valve Body, Oil Pan Etc

NISSAN RL4R01A (Nissan 1988-2001), (LTI TXI & TXII Taxi 1997-2006) 4 SPEED RWD (Hydraulic Control)



AUTOMATIC CHOICE



THE AUTOMATIC TRANSMISSION PARTS WAREHOUSE

ILL NO.	DESCRIPTION	YEARS	QTY	PART NO
KITS				
Kit	Master Overhaul	87-01	1	RE4.MOHK01
Kit	Overhaul Kit (Transtec).....	87-01	1	RE4.OHK01
Kit	Overhaul Kit (Precision).....	87-01	1	RE4.OHK51
Kit	Overhaul (Transtec) TX1, TXII Taxi Only (Can Use RE4.OHK01).....	97-06	1	RE4.OHK05
GASKETS				
102H	Pan Gasket All (Cork)	87-06	1	RE4.GAS01
102H	Pan Gasket All (Duraprene).....	87-06	1	RE4.GAS10
100A	Pump Gasket (Metal).....	87-06	1	RE4.GAS07
101G	Extension Housing Gasket.....	87-06	1	RE4.GAS08
RUBBER COMPONENTS				
Kit	Servo Sub Kit.....	87-ON	1	RE4.ORK01
Kit	Accumulator 'O' Ring Kit (TX1, TXII Taxi).....	97-06	1	RE4.ORK02
120A	Pump 'O' Ring.....	87-06	1	RE4.ORK01
140H	Filter 'O' Ring	87-06	1	RE4.ORK04
NI	'D' Ring - 60mm Servo.....	97-06	1	RE4.ORK02
NI	'D' Ring, Fwd Clutch Outer.....	03-06	1	RE4.ORK03
METAL CLAD SEALS				
150A	Convertor Seal All	87-06	1	RL4.MCS01
151G	Extension Housing (Nissan) (38mm x 50mm x 11mm)	87-ON	1	RE4.MCS01
NI	Adaptor Housing (Nissan) (60mm x 38mm).....	87-ON	1	RE4.MCS03
SEALING RINGS				
Kit	Sealing Ring Kit	87-06	1	RE4.SRK01
FRICITION PLATES (TX1, TXII TAXI)				
Kit	Friction Plate (Aftermarket) (TX1, TXII Taxi)	97-06	1	RE4.FRK04
Kit	Friction Plate (OEM) (TX1, TXII Taxi).....	97-06	1	RE4.FRK14
250B	Reverse Input (Aftermarket) (149mm OD x 2.00mm x 30T) ..	97-06	2	SUB4.FRP09
250B	Reverse Input (OEM) (149mm OD x 2.00mm x 30T) ..	97-06	2	SUB4.FRP39
251C	High 3-4 Clutch (Aftermarket) (132mm OD x 1.60mm x 30T) ..	97-06	5	RL4.FRP08
251C	High 3-4 Clutch (OEM) (132mm OD x 1.60mm x 30T) ..	97-06	5	RL4.FRP18
252E	Forward (Aftermarket) (148mm OD x 1.60mm x 36T)) .	97-06	7	SUB4.FRP01
252E	Forward (OEM) (148mm OD x 1.60mm x 36T)) .	97-06	7	SUB4.FRP31
253E	Overrun (Aftermarket) (130mm OD x 2.00mm x 18T) ..	97-06	3	SUB4.FRP02
253E	Overrun (OEM) (130mm OD x 2.00mm x 18T) ..	97-06	3	SUB4.FRP32
254F	Low & Reverse (Aftermarket) (147mm OD x 1.60mm x 30T) ..	97-06	6	SUB4.FRP07
254F	Low & Reverse (OEM) (147mm OD x 1.60mm x 30T) ..	97-06	6	SUB4.FRP37

ILL NO.	DESCRIPTION	YEARS	QTY	PART NO
FRICITION PLATES (NISSAN)				
Kit	Friction Plate (Alto) (Pathfinder 2WD)	90-95	1	RE4.FRK58
Kit	Friction Plate (Alto) (Pathfinder 4WD)	90-92	1	RE4.FRK56
Kit	Friction Plate (Alto) (Pickup 2WD 4Cyl).....	92-97	1	RE4.FRK58
Kit	Friction Plate (Alto) (Pickup 4WD).....	88-92	1	RE4.FRK56
250B	Reverse Input (Aftermarket) (149mm OD x 2.00mm x 34T) ..	87-92	2	SUB4.FRP04
250B	Reverse Input (Aftermarket) (149mm OD x 2.00mm x 30T) ..	92-ON	2	SUB4.FRP09
250B	Reverse Input (OEM) (149mm OD x 2.00mm x 30T) ..	92-ON	2	SUB4.FRP39
251C	High 3-4 Clutch (Aftermarket) (132mm OD x 1.60mm x 30T) ..	87-ON	4-5	RL4.FRP08
251C	High 3-4 Clutch (OEM) (132mm OD x 1.60mm x 30T) ..	87-ON	4-5	RL4.FRP18
252E	Forward (Aftermarket) (148mm OD x 1.60mm x 36T)) .	87-ON	5-7	SUB4.FRP01
252E	Forward (OEM) (148mm OD x 1.60mm x 36T)) .	87-ON	5-7	SUB4.FRP31
252E	Forward (148mm OD x 2.00mm x 36T)) .	89-ON	5-7	SUB4.FRP11
253E	Overrun (Aftermarket) (133mm OD x 2.00mm x 18T) ..	87-ON	3	SUB4.FRP02
253E	Overrun (OEM) (133mm OD x 2.00mm x 18T) ..	87-ON	3	SUB4.FRP32
254F	Low & Reverse (Aftermarket) (147mm OD x 2.00mm x 30T) ..	87-ON	4-8	SUB4.FRP03
254F	Low & Reverse (OEM) (147mm OD x 2.00mm x 30T) ..	87-ON	4-8	SUB4.FRP33
254F	Low & Reverse (Aftermarket) (147mm OD x 1.60mm x 30T) ..	95-ON	4-6	SUB4.FRP07
254F	Low & Reverse (OEM) (147mm OD x 1.60mm x 30T) ..	95-ON	4-6	SUB4.FRP37
NI	Transfer Case QX-4 (125mm ID x 1.95mm x 40T)	97-ON	8	SUB4.FRP06
STEEL PLATES				
Kit	Steel Plate (Alto) (Nissan Pathfinder 2WD)	90-94	1	RE4.STK58
Kit	Steel Plate (Alto) (Nissan Pathfinder 2WD)	1995	1	RE4.STK62
Kit	Steel Plate (Alto) (Nissan Pathfinder 4WD)	88-89	1	RE4.STK55
Kit	Steel Plate (Alto) (Nissan Pathfinder 4WD)	90-92	1	RE4.STK60
Kit	Steel Plate (Alto) (Nissan Pathfinder 4WD)	95-96	1	RE4.STK62
Kit	Steel Plate (Alto) (Nissan Pathfinder All)	96-ON	1	RE4.STK62
Kit	Steel Plate (Alto) (Nissan Pickup 2WD 4 cyl.)	90-92	1	RE4.STK59
Kit	Steel Plate (Alto) (Nissan Pickup 2WD 4 cyl.)	93-95	1	RE4.STK58
Kit	Steel Plate (Alto) (Nissan Pickup 2WD 4Cyl).....	96-ON	1	RE4.STK62
Kit	Steel Plate (Alto) (Nissan Frontier)	98-ON	1	RE4.STK62
300B	Reverse Input Shark Tooth (130mm ID x 2.00mm x 30T)	87-92	2	RE4.STP03
300B	Reverse Input Square Tooth (130mm ID x 2.00mm x 30T)	87-92	2	RL4.STP09
300B	Reverse Input (130mm ID x 2.00mm x 30T)	93-ON	2	SUB4.STP09

NISSAN RL4R01A (Nissan 1988-2001), (LTI TXI & TXII Taxi 1997-2006) 4 SPEED RWD (Hydraulic Control)



AUTOMATIC CHOICE



THE AUTOMATIC TRANSMISSION PARTS WAREHOUSE

ILL NO.	DESCRIPTION	YEARS	QTY	PART NO
STEEL PLATES Cont...				
300B	Reverse Input (136mm ID x 2.80mm x 30T)	96-ON	2	RE4.STP09
301C	High Clutch (110mm ID x 1.70mm x 27T)	88-93	7	RL4.STP13
301C	High Clutch (110mm ID x 2.00mm x 27T)	89-ON	3-5	RL4.STP11
301C	High Clutch (Not RE5R01A) (110mm ID x 2.75mm x 27T)	87-ON	AR	SUB4.STP11
301C	High Clutch (Not RE5R01A) (110mm ID x 3.00mm x 27T)	87-ON	5	RL4.STP10
401C	High Clutch Pressure Plate (4.3mm).....	87-ON	AR	RE4.PP04
302E	Forward (130mm ID x 2.00mm x 24T)	88-ON	5-7	SUB4.STP01
302E	Forward (130mm ID x 1.80mm x 24T)	87-ON	7	SUB4.STP13
303E	Overrun (115mm ID x 2.00mm x 6T)	87-ON	5	SUB4.STP02
304F	Low & Reverse 2 Thin Teeth (125mm ID x 2.00mm x 14T)	87-ON	6-7	SUB4.STP03
311E	Cushion Plate, Forward Clutch .	87-ON	1	RE4.DIA01
PRESSURE PLATES				
400B	Reverse Input (4.80mm Thick)	87-ON	AR	RE4.PP18
	(5.00mm Thick)	87-ON	AR	RE4.PP19
	(5.20mm Thick)	87-ON	AR	RE4.PP20
	(5.40mm Thick)	87-ON	AR	RE4.PP21
401C	High Clutch (3.40mm Thick)	87-ON	AR	RE4.PP14
	(3.60mm Thick)	87-ON	AR	RE4.PP15
	(3.80mm Thick)	87-ON	AR	RE4.PP16
	(4.00mm Thick)	87-ON	AR	RE4.PP10
	(4.20mm Thick)	87-ON	AR	RE4.PP11
	(4.30mm Thick)	87-ON	AR	RE4.PP04
	(4.40mm Thick)	87-ON	AR	RE4.PP05
	(4.60mm Thick)	87-ON	AR	RE4.PP12
	(4.80mm Thick)	87-ON	AR	RE4.PP13
402E	Forward Clutch (8.00mm Thick)	87-ON	AR	RE4.PP25
	(8.20mm Thick)	87-ON	AR	RE4.PP26
	(8.40mm Thick)	87-ON	AR	RE4.PP27
	(8.60mm Thick)	87-ON	AR	RE4.PP28
	(8.80mm Thick)	87-ON	AR	RE4.PP29
403E	Overrun Clutch (4.40mm Thick)	87-ON	AR	RE4.PP22
	(4.60mm Thick)	87-ON	AR	RE4.PP23
	(4.80mm Thick)	87-ON	AR	RE4.PP24
404F	Low/Reverse Clutch (7.00mm Thick)	87-ON	AR	RE4.PP17
	(7.20mm Thick)	87-ON	AR	RE4.PP06
	(7.40mm Thick)	87-ON	AR	RE4.PP07
	(7.60mm Thick)	87-ON	AR	RE4.PP08
	(7.80mm Thick)	87-ON	AR	RE4.PP09
	(8.00mm Thick)	87-ON	AR	RE4.PP30
	(8.20mm Thick)	87-ON	AR	RE4.PP31
	(8.40mm Thick)	87-ON	AR	RE4.PP32
	(8.60mm Thick)	87-ON	AR	RE4.PP33
SPRINGS & CIRCLIPS				
415H	Spring, 1-2 Accumulator.....	87-ON	1	RE4.SPR06
416H	Spring, 2-3 Accumulator.....	87-ON	1	RE4.SPR05
NI	Anti Rattle Spring, Low Reverse Clutch.....	87-ON	1	RE4.SPR09

ILL NO.	DESCRIPTION	YEARS	QTY	PART NO
FILTERS				
450H	Filter 25mm Pick Up.....	87-92	1	RE4.FIL01
450H	Filter 5mm Pick Up.....	90-ON	1	RE4.FIL03
450H	Filter 6.35mm Pick Up (Aftermarket) (4Cyl Nissan)	87-ON	1	RE4.FIL05
450H	Filter 6.35mm Pick Up (OEM) (4Cyl Nissan)	87-ON	1	RE4.FIL15
450H	Filter 6.35mm Pick Up (Aftermarket) (TX1, TXII Taxi)	97-06	1	RE4.FIL05
450H	Filter 6.35mm Pick Up (OEM) (TX1, TXII Taxi)	97-06	1	RE4.FIL15
451G	Governor Filter (Cone).....	97-06	1	L4N.FIL02
BANDS				
500B	Band (Aftermarket).....	88-ON	1	SUB4.BAN01
500B	Band (OEM)	88-ON	1	SUB4.BAN11
500B	Band (Aftermarket) (TX1 Taxi) ..	97-01	1	SUB4.BAN01
500B	Band (OEM) (TX1 Taxi).....	97-01	1	SUB4.BAN11
500B	Band (TXII Taxi)	02-06	1	RL4.BAN01
BUSHINGS				
Kit	Bush Kit.....	87-ON	1	RE4.BK01
NI	Pump Body Bush	87-ON	1	RE4.BUS01
553B	Reverse Input Drum.....	87-ON	1	RL4.BUS04
NI	Case Bush (One Piece Modified)	87-ON	1	RE4.BUS02
564	Governor Bore Sleeve (Sonnax@ Click here for Info) ...	87-ON	1	RE4.BUS05
565G	Extension Housing (TX1, TXII Taxi) (43mm OD x 40mm Long)	97-06	1	RE4.BUS04
THRUST WASHERS & BEARINGS				
Kit	Bearing and Race Kit.....	87-ON	1	RE4.TWK01
600A	Thrust Washer Pump - Rev Input (Sel 0.89mm Thick Plastic)	87-ON	AR	RL4.THW01
600A	Thrust Washer Pump - Rev Input (Sel 1.00mm Thick Plastic)	87-ON	AR	RL4.THW02
600A	Thrust Washer Pump - Rev Input (Sel 1.30mm Thick Plastic)	87-ON	AR	RL4.THW03
600A	Thrust Washer Pump - Rev Input (Sel 1.70mm Thick Plastic)	87-ON	AR	RL4.THW04
600A	Thrust Washer Pump - Rev Input (Sel 1.93mm Thick Plastic)	87-ON	AR	RL4.THW05
601A	Race Pump to High Drum (Sel 0.80mm Thick 3 Tang)	87-ON	AR	RL4.THW14
601A	Race Pump to High Drum (Sel 1.20mm Thick 3 Tang)	87-ON	AR	RL4.THW08
601A	Race Pump to High Drum (Sel 1.40mm Thick 3 Tang)	87-ON	AR	RL4.THW09
601A	Race Pump to High Drum (Sel 1.60mm Thick 3 Tang)	87-ON	AR	RL4.THW10
601A	Race Pump to High Drum (Sel 1.78mm Thick 3 Tang)	87-ON	AR	RL4.THW11
601A	Race Pump to High Drum (Sel 2.00mm Thick 3 Tang)	87-ON	AR	RL4.THW12
603C	Race High Drum to Hub (3 Inner Tangs).....	87-ON	1	RE4.THW03
604D	Race, Sun Gear Shell to Front Planet Bearing.....	87-ON	1	RE4.TOR04
605D	Race, Rear Planet to Annulus Bearing.....	87-ON	1	RE4.TOR04

NISSAN RL4R01A (Nissan 1988-2001), (LTI TXI & TXII Taxi 1997-2006) 4 SPEED RWD (Hydraulic Control)



AUTOMATIC CHOICE



THE AUTOMATIC TRANSMISSION PARTS WAREHOUSE

ILL NO.	DESCRIPTION	YEARS	QTY	PART NO
THRUST WASHERS & BEARINGS Cont...				
606D	T.Wash Rear Ring Gear to Sprag (Plastic).....	87-ON	1	RE4.THW04
607D	T.Wash Overrun Clutch Hub (Plastic).....	87-ON	1	RE4.THW04
650A	Bearing, Stator to High Clutch ..	87-ON	1	RE4.TOR07
651C	Radial Bearing, High Drum to Drive Hub.....	87-ON	1	RE4.TOR08
653D	Race Rear of Sun Shell (Can Use RE4.TOR05).....	87-ON	1	RL4 THW07
653D	Race Rear of Sun Shell (Can Use RL4.THW07).....	87-ON	1	RE4 TOR05
654D	Bearing Front Planet to S.Gear	87-ON	1	RE4.BE04
656D	Race Rear of Rear Planet (Can Use RE4.TOR05).....	87-ON	1	RL4.THW07
656D	Race Rear of Rear Planet (Can Use RL4.THW07).....	87-ON	1	RE4.TOR05
658F	Inner Hub to Inner Race Bearing (Open Face One Side 59mm OD) .	88-ON	1	RE4.TOR06
659F	Shim Fwd Drum to Hub Update (Replaces Bearing With Race)..	88-ON	1	RE4.TOR02
ELECTRICAL COMPONENTS				
700H	Solenoid, Overdrive Cancel (3-4 Shift).....	87-ON	1	RE4.SOL08
701H	Solenoid, Lock Up Control	87-ON	1	RE4.SOL03
NI	Internal/External Loom (TX1 & TX2 Taxi).....	97-06	1	RL4.ELE01
VALVE BODY PARTS				
NI	Spring, Throttle Valve (TX1 & TX2 Taxi).....	97-06	1	RE4.SPR07
NI	Spring, Pressure Regulator Valve (TX1 & TX2 Taxi).....	97-06	1	RE4.SPR08
HARD PARTS				
800A	Pump Assy (Flats On Rotor) (TX1, TXII Taxi).....	97-06	1	RE4.PUM03
802A	Pump Rotor Kit (13 Vane) (Flats Inside).....	87-ON	1	RE4.PUM05
805B	Drum, Reverse Input (40mm Wide Band).....	87-ON	1	RE4.DRU02
809C	Hub, High Clutch.....	87-89	1	RE4.HUB03
813D	Shell (w/ 33 T Front Sun Gear 48.51mm OD) 1 Groove (12 Lugs To Rev Drum).....	00-ON	1	RE4.SUN02
813D	Shell & Front Sun Gear (OEM) (33T, 48.51mm OD, 1 Groove 8 Lugs to Reverse Drum).....	87-ON	1	RE4.SUN12
814D	Front Planetary Assy (33T Fnt Sun Gear 2 Groove) ...	87-ON	1	RE4.PL04
814D	Front Planetary Assy (OEM) (21 Tooth Pinions).....	87-ON	1	RE4.PL14
815D	Rear Sun Gear (42T, No Groove) (4 Oil Notches on Rear).....	87-ON	1	RE4.SUN01
815D	Rear Sun Gear (OEM) (42T, No Groove) (4 Oil Notches on Rear).....	87-ON	1	RE4.SUN11
816D	Rear Planetary (42T Sun Gear, 1 Groove)	87-ON	1	RE4.PL05
816D	Rear Planetary (OEM) (42T Sun Gear, 1 Groove)	87-ON	1	RE4.PL15

ILL NO.	DESCRIPTION	YEARS	QTY	PART NO
HARD PARTS Cont...				
816D	Rear Planetary (42T Sun Gear, No Groove).....	87-ON	1	RE4.PL07
817D	Ring Gear, Rear Planet (37T Rear Sun Gear With 2 Grooves).....	87-ON	1	RE4.HUB04
817D	Ring Gear, Rear Planet (42T Rear Sun Gear With 1 Groove).....	87-ON	1	RE4.HUB05
817D	Ring Gear, Rear Planet (OEM) (42T Rear Sun Gear With 1 Groove).....	87-ON	1	RE4.HUB15
818D	Planetary Package (42T Sun Gear No Brgs).....	87-ON	1	RE4.PL02
818D	Planetary Package (37T Sun Gear No/ Brgs).....	87-ON	1	RE4.PL03
818D	Planetary Package (Heavy Duty) (Front Planetary has 4 Pinions with 20 Teeth Rear Planetary has 5 Pinions with 17 Teeth).....	87-ON	1	RE4.PL06
819D	Front Sprag (28 Element)	87-ON	1	RE4.OWC03
826E	Sprag, Low Sprag (30 Elements 10.31mm Wide) ..	87-ON	1	RE4.OWC02
828F	Rear Support / O.W.C. Inner Race (With 1 Lube Hole In Sprag Area).....	87-ON	1	RE4.OWC04
832G	Governor Assembly (TX1, TXII Taxi).....	97-06	1	RE4.GOV01
834H	Piston, 3-4/N-R Accumulator.....	87-ON	1	RE4.PIS02
SPECIAL ITEMS				
NI	3-4 Shift/Cancel Cable (TX1, TXII Taxi).....	97-06	1	RE4.CAB01
NI	Pump Seal Retaining Clip.....	87-ON	1	RE4.RET01
NI	Servo Pin W/O 'O' Ring	87-ON	1	RE4.VA01
NI	Washer, Cooler Pipe (Aluminium).....	87-ON	1	RE4.WA01
TOOLS & MANUALS				