

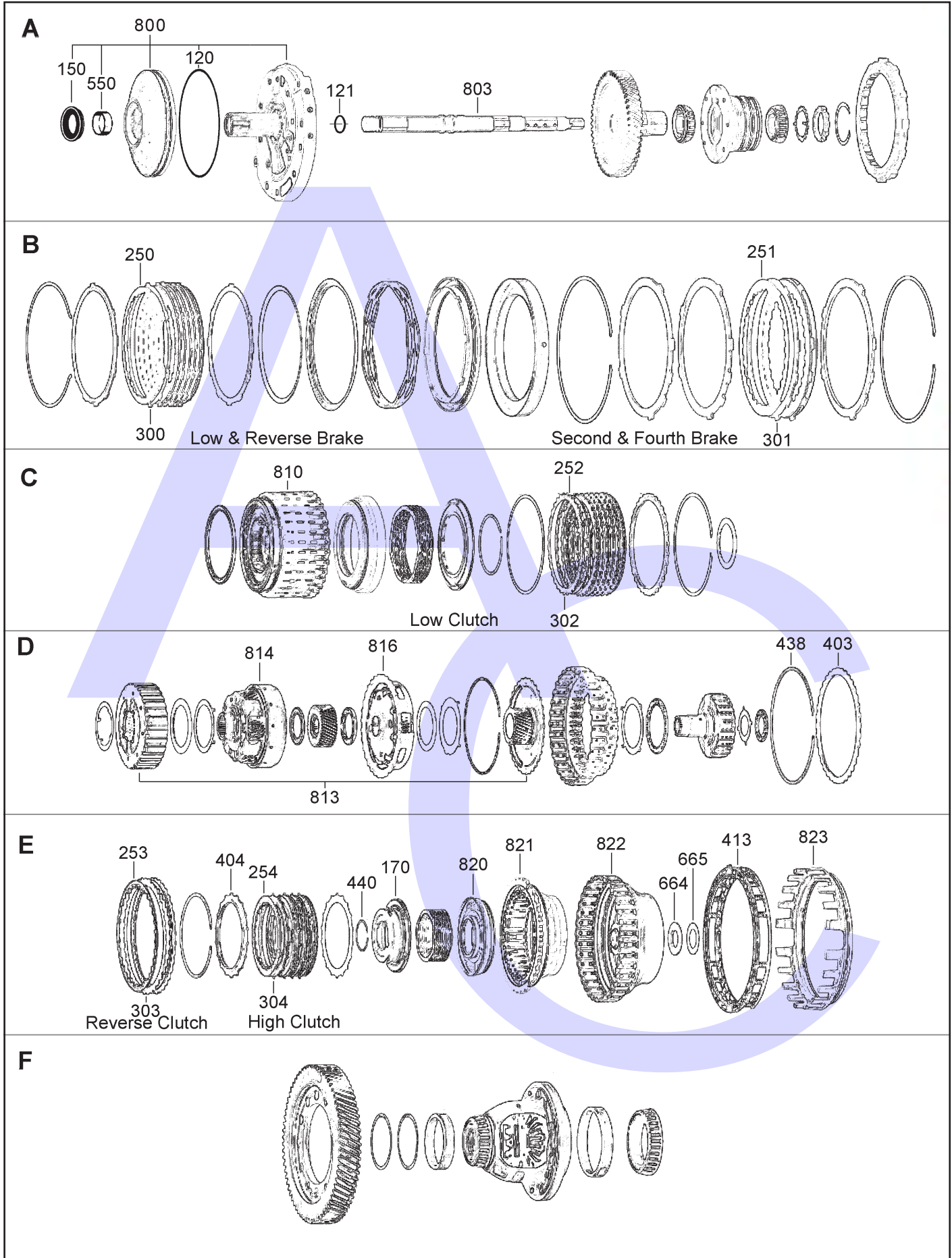
# JATCO JF506E (Jaguar, Rover, Land Rover, Ford, Mazda, VW & Seat) 5 SPEED FWD (Electronic Control)



AUTOMATIC CHOICE



THE AUTOMATIC TRANSMISSION PARTS WAREHOUSE



# JATCO JF506E (Jaguar, Rover, Land Rover, Ford, Mazda, VW & Seat) 5 SPEED FWD (Electronic Control)

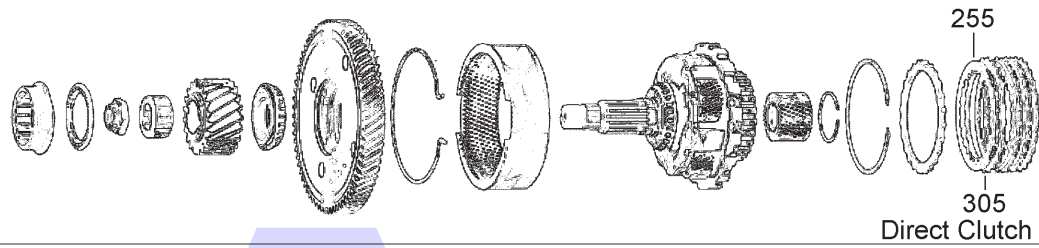


AUTOMATIC CHOICE

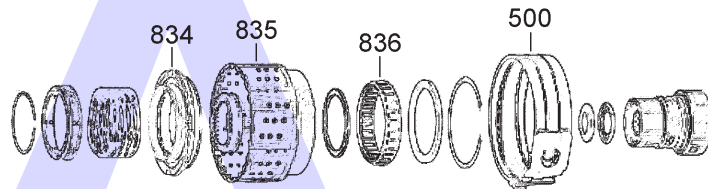


THE AUTOMATIC TRANSMISSION PARTS WAREHOUSE

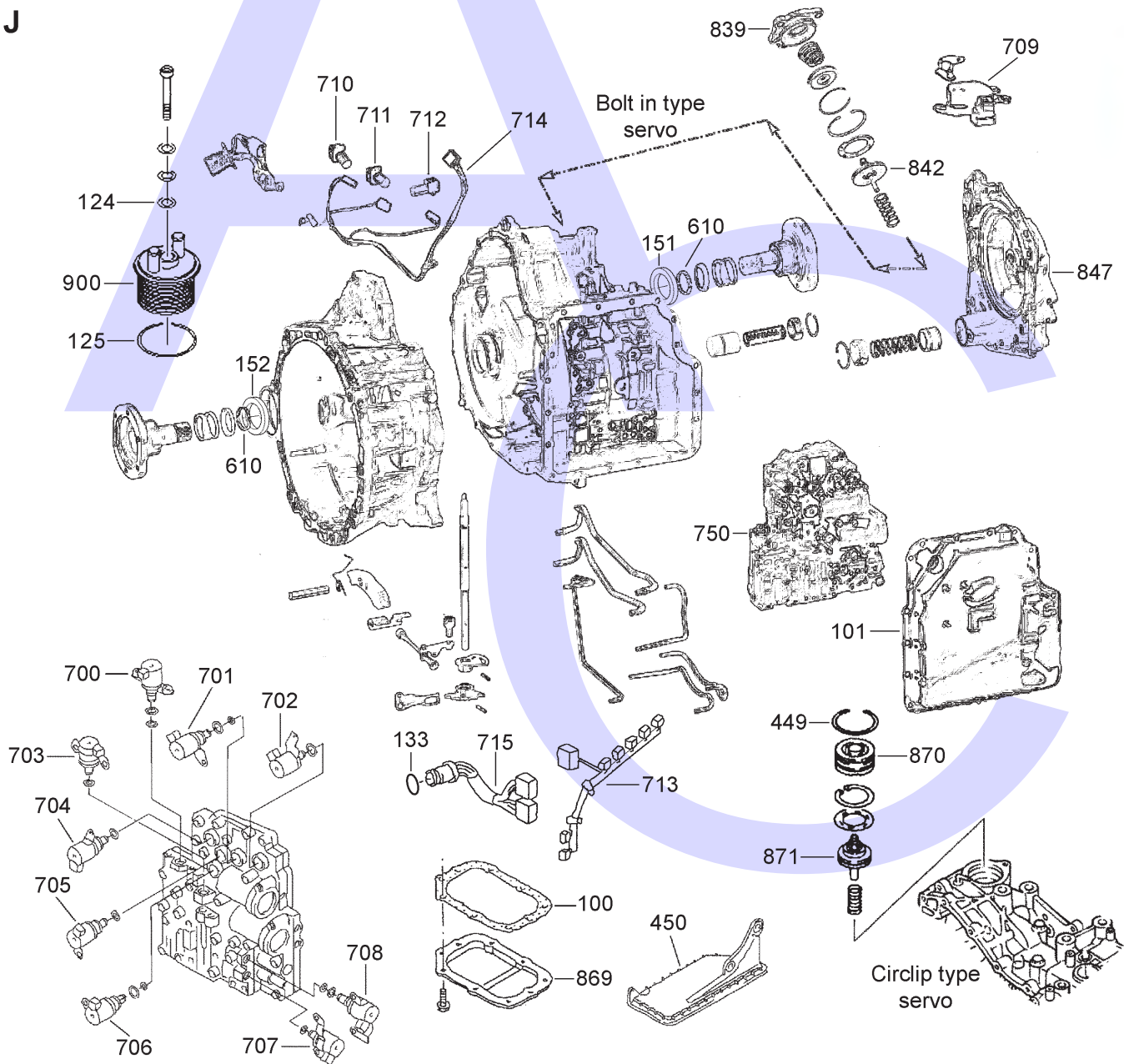
G



H



J



# JATCO JF506E (Jaguar, Rover, Land Rover, Ford, Mazda, VW & Seat) 5 SPEED FWD (Electronic Control)



AUTOMATIC CHOICE



THE AUTOMATIC TRANSMISSION PARTS WAREHOUSE

ILL NO.	DESCRIPTION	YEARS	QTY	PART NO
<b>KITS</b>				
Kit	Overhaul (Transtec) Except Golf/Bora/Galaxy (W/O Pistons).....	00-ON	1	JF506E.OHK01
Kit	Overhaul (Transtec) Golf/Bora/Galaxy (W/O Pistons).....	02-ON	1	JF506E.OHK02
Kit	Overhaul (Precision) .....	00-ON	1	JF506E.OHK03
Kit	Overhaul (MFC) .....	00-ON	1	JF506E.OHK51
Kit	Overhaul (Rover OEM) (Without Gaskets) .....	00-ON	1	JF506E.OHK10
Kit	Overhaul (Mazda OEM) (Without Gaskets) .....	00-ON	1	JF506E.OHK11
Kit	Overhaul (Ford OEM) (Without Gaskets) .....	00-ON	1	JF506E.OHK12
Kit	Overhaul (Jaguar OEM) (Without Gaskets) .....	00-ON	1	JF506E.OHK13
Kit	Overhaul (VW OEM) (Without Gaskets) .....	00-ON	1	JF506E.OHK14
Kit	Seal Kit, High Clutch (Precision).....	00-ON	1	JF506E.ORK01
Kit	Seal Kit, 2-4 Brake (Precision).....	00-ON	1	JF506E.ORK02
Kit	Seal Kit, Low/Low Reverse Clutch (Transtec®) .....	00-ON	1	JF506E.ORK03
Kit	Valve Body Gasket Kit .....	00-ON	1	JF506E.GK01
Kit	Reverse/ High Repair Package	00-ON	1	JF506E.REP01
<b>GASKETS</b>				
100J	Pan Gasket (Galaxy).....	4/00-ON	1	JF506E.GAS01
101J	Valve Body Cover .....	00-ON	1	JF506E.GAS02
101J	Valve Body Cover (Farpack).....	00-ON	1	JF506E.GAS12
NI	Pump to Case (Coated Metal) ..	00-ON	1	JF506E.GAS06
NI	Valve Body, Upper & Lower Main (Mazda Only) .....	00-ON	2	JF506E.GAS03
NI	Valve Body, Upper & Lower Main (All Except Mazda).....	00-ON	2	JF506E.GAS04
NI	Valve Body, Auxillary Upper & Lower (All).....	00-ON	2	JF506E.GAS05
<b>RUBBER COMPONENTS</b>				
Kit	Seal Kit, High Clutch (Precision).....	00-ON	1	JF506E.ORK01
Kit	Seal Kit, 2-4 Brake (Precision).....	00-ON	1	JF506E.ORK02
Kit	Seal Kit, Low/Low Reverse Clutch (Transtec®) .....	00-ON	1	JF506E.ORK03
120A	Pump 'O' Ring .....	00-ON	1	RL4.OR05
121A	'O' Ring, Input Shaft.....	00-ON	1	JF506E.OR05
124J	'O' Ring, Oil Cooler Bolt Seal....	00-ON	1	JF506E.OR04
125J	'O' Ring, Oil Cooler to Case.....	00-ON	1	JF506E.OR03
133J	'O' Ring, Valve Body Loom Connector to Case.....	00-ON	1	5HP18.OR03
<b>METAL CLAD SEALS</b>				
150A	Converter .....	00-ON	1	RL43.MCS01
151J	Drive Shaft (L.H. Galaxy).....	00-ON	1	JF506E.MCS02
151J	Drive Shaft (L.H. Rover 75).....	00-ON	1	JF506E.MCS04
151J	Drive Shaft (L.H. Freelander)....	00-ON	1	JF506E.MCS05
151J	Drive Shaft (L.H. Mondeo / Mazda) (56mm x 41mm x 8/13) .....	00-ON	1	JF506E.MCS06
152J	Drive Shaft (R.H. Galaxy) .....	00-ON	1	JF506E.MCS03
152J	Drive Shaft (R.H. Rover 75) .....	00-ON	1	JF506E.MCS04
152J	Drive Shaft (R.H. Freelander) ...	00-ON	1	JF506E.MCS05

ILL NO.	DESCRIPTION	YEARS	QTY	PART NO
<b>METAL CLAD SEALS Cont...</b>				
152J	Drive Shaft (R.H. Mondeo / Mazda) (56mm x 41mm x 8/13) .....	00-ON	1	JF506E.MCS06
152J	Drive Shaft (R.H. AWD Jaguar / Rover) (68mm x 56mm x 7mm) .....	00-ON	1	JF506E.MCS07
NI	Manual Shaft.....	00-ON	1	A130.MCS03
<b>MOULDED PISTONS</b>				
170E	Accumulator Piston (OEM) High Clutch .....	00-ON	1	JF506E.PIS03
170E	Accumulator Piston (Precision) High Clutch .....	00-ON	1	JF506E.PIS02
<b>SEALING RINGS</b>				
Kit	Sealing Ring Kit (Transtec) .....	02-ON	1	JF506E.SRK01
NI	Converter Sealing Washer (Behind Pump Seal).....	00-ON	1	JF506E.SSR01
NI	Input Shaft.....	00-ON	3	JF506E.SSR02
NI	Direct Clutch .....	00-ON	2	JF506E.SSR03
NI	Low Clutch .....	00-ON	2	JF506E.SSR04
NI	High/Reverse Clutch.....	00-ON	3	JF506E.SSR05
<b>FRICTION PLATES</b>				
Kit	Friction Kit .....	00-ON	1	JF506E.FRK01
Kit	Friction Kit (Alto) .....	00-ON	1	JF506E.FRK51
Kit	Overdrive Drum Saver Kit (Alto). ..	00-ON	1	JF506E.CK01
250B	Low Reverse (163mm OD x 1.80mm x 32T) ..	00-ON	7	RL4.FRP29
250B	Low Reverse (Alto) (163mm OD x 1.80mm x 32T) ..	00-ON	7	RL4.FRP79
251B	2nd & 4th Brake (191mm OD x 1.60mm x 32T) ..	00-ON	3	JF506E.FRP03
251B	2nd & 4th Brake (Alto) (191mm OD x 1.60mm x 32T) ..	00-ON	3	JF506E.FRP53
252C	Low Clutch (138mm OD x 1.80mm x 30T) ..	00-ON	7	JF506E.FRP02
252C	Low Clutch (Alto) (138mm OD x 1.73mm x 30T) ..	00-ON	7	JF506E.FRP52
253E	Reverse Clutch (155mm OD x 1.52mm x 32T) ..	00-ON	2	JF506E.FRP04
253E	Reverse Clutch (Alto) (155mm OD x 1.52mm x 32T) ..	00-ON	2	JF506E.FRP54
254E	High Clutch (Aftermarket) (112mm OD x 1.60mm x 24T)...	00-ON	5	RL4.FRP23
254E	High Clutch (Alto) (112mm OD x 1.60mm x 24T)...	00-ON	5	RL4.FRP73
255G	Direct Clutch (102mm OD x 1.73mm x 24T) ..	00-ON	4	JF506E.FRP01
255G	Direct Clutch (Alto) (102mm OD x 1.73mm x 24T) ..	00-ON	4	JF506E.FRP51
<b>STEEL PLATES</b>				
Kit	Steel Plate Kit .....	00-ON	1	JF506E.STK01
Kit	Overdrive Drum Saver Kit (Alto). ..	00-ON	1	JF506E.CK01
300B	Low Reverse (150mm ID x 1.4mm x 10T) .....	00-ON	7	JF506E.STP05
302C	Low Clutch (123mm ID x 1.40mm x 32T) ....	00-ON	7	JF506E.STP02
301B	2nd & 4th Brake (170mm ID x 3.00mm x 7T) .....	00-ON	3	JF506E.STP03
303E	Reverse Clutch (142mm ID x 2.00mm x 36T) ....	00-ON	2	JF506E.STP04
304E	High Clutch (91.50mm ID x 2.40mm x 18T) .	00-ON	5	JF506E.STP06

# JATCO JF506E (Jaguar, Rover, Land Rover, Ford, Mazda, VW & Seat) 5 SPEED FWD (Electronic Control)



AUTOMATIC CHOICE



THE AUTOMATIC TRANSMISSION PARTS WAREHOUSE

ILL NO.	DESCRIPTION	YEARS	QTY	PART NO
<b>STEEL PLATES Cont...</b>				
304E	High Clutch (OEM) (91.50mm ID x 2.40mm x 18T) . 00-ON		5	<b>JF506E.STP26</b>
304E	High Clutch (91.50mm ID x 1.60mm x 18T) . 00-ON		5	<b>JF506E.STP07</b>
04E	High Clutch (OEM) (91.50mm ID x 1.60mm x 18T) . 00-ON		5	<b>JF506E.STP27</b>
305G	Direct Clutch (86mm ID x 2.00mm x 24T) ..... 00-ON		4	<b>JF506E.STP01</b>
<b>PRESSURE PLATES</b>				
403D	Reverse Clutch (142mm ID x 36T) (3.60mm Thick) ..... 00-ON	AR		<b>JF506E.PP01</b>
	(3.80mm Thick) ..... 00-ON	AR		<b>JF506E.PP02</b>
	(4.00mm Thick) ..... 00-ON	AR		<b>JF506E.PP03</b>
	(4.20mm Thick) ..... 00-ON	AR		<b>JF506E.PP04</b>
404E	High Clutch (91.50mm ID x 18T) (3.00mm Thick) ..... 00-ON	AR		<b>JF506E.PP05</b>
	(3.02mm Thick) ..... 00-ON	AR		<b>JF506E.PP06</b>
	(3.04mm Thick) ..... 00-ON	AR		<b>JF506E.PP07</b>
	(3.06mm Thick) ..... 00-ON	AR		<b>JF506E.PP08</b>
<b>SPRINGS &amp; CIRCLIPS</b>				
413E	Return Spring Assy 2-4 Brake (21.40mm High) ..... 00-ON		1	<b>JF506E.SPR03</b>
438D	Circlip, Reverse Clutch ..... 00-ON		1	<b>JF506E.CIR01</b>
440E	Circlip, High Clutch Damper..... 00-ON		1	<b>JF506E.CIR03</b>
449J	Circlip, Servo Cover (Circlip Type Servo) ..... 00-ON		1	<b>JF506E.CIR02</b>
<b>FILTERS</b>				
450J	Pick Up Filter (Galaxy) (OEM) ..... 4/00-ON		1	<b>JF506E.FIL01</b>
450J	Pick Up Filter (Galaxy) (Aftermarket) ..... 4/00-ON		1	<b>JF506E.FIL11</b>
450J	Pick Up Filter (Rover 75, Freelander, Mazda & Mondeo) (OEM) ..... 02/02-ON		1	<b>JF506E.FIL02</b>
450J	Pick Up Filter (Rover 75, Freelander, Mazda & Mondeo) (Aftermarket) ..... 02/02-ON		1	<b>JF506E.FIL12</b>
450J	Pick Up Filter (Golf/Bora Audi A3) (OEM) ..... 99-ON		1	<b>JF506E.FIL03</b>
450J	Pick Up Filter (Golf/Bora Audi A3) (Aftermarket) ..... 99-ON		1	<b>JF506E.FIL13</b>
<b>BANDS</b>				
500H	Reduction Brake Band (All Models) ..... 00-ON		1	<b>JF506E.BAN01</b>
<b>BUSHINGS</b>				
Kit	Bushing Kit..... 00-ON		1	<b>JF506E.BK01</b>
550A	Bush, Front Pump..... 00-ON		1	<b>L3N.BUS01</b>

ILL NO.	DESCRIPTION	YEARS	QTY	PART NO
<b>THRUST WASHERS &amp; BEARINGS</b>				
Kit	Bearing Kit (Mazda) .....	00-ON	1	<b>JF506E.TWK01</b>
Kit	Bearing Kit (Ford).....	00-ON	1	<b>JF506E.TWK02</b>
610J	Conical Washer, Differential Drive Shaft .....	00-ON	1	<b>JF506E.THW01</b>
664E	Radial Bearing, High/Rev Drum to End Cover .....	00-ON	1	<b>JF506E.TOR01</b>
665E	Race, High/Rev Drum to End Cover .....	00-ON	1	<b>JF506E.TOR02</b>
<b>ELECTRICAL COMPONENTS</b>				
Kit	Solenoid Kit (Jaguar/Rover Etc)	00-ON	1	<b>JF506E.SOL20</b>
Kit	Solenoid Kit (Mazda/Mondeo)...	00-ON	1	<b>JF506E.SOL21</b>
700J	Line Pressure Duty Solenoid (All Models).....	00-ON	1	<b>JF506E.SOL09</b>
701J	Shift Solenoid 'B' (All Models).....	00-ON	1	<b>JF506E.SOL01</b>
702J	Shift Solenoid 'C' (Galaxy/Sharan/Jaguar/Rover) .	00-ON	1	<b>JF506E.SOL02</b>
702J	Shift Solenoid 'C' (Mazda/Mondeo, Green Conn) .	00-ON	1	<b>JF506E.SOL11</b>
703J	Low Clutch Timing Solenoid (Galaxy/Sharan/Jaguar/Rover) .	00-ON	1	<b>JF506E.SOL04</b>
703J	High Clutch Control Solenoid (Mazda/Mondeo).....	00-ON	1	<b>JF506E.SOL13</b>
704J	Shift Solenoid 'A' (Galaxy/Sharan/Jaguar/Rover) .	00-ON	1	<b>JF506E.SOL03</b>
704J	Shift Solenoid 'A' (Mazda/Mondeo).....	00-ON	1	<b>JF506E.SOL14</b>
705J	Reduction Timing Solenoid (Galaxy/Sharan/Jaguar/Rover) .	00-ON	1	<b>JF506E.SOL08</b>
705J	Reduction Timing Solenoid (Mazda/Mondeo).....	00-ON	1	<b>JF506E.SOL15</b>
706J	Lock Up Solenoid (Galaxy/Sharan/Jaguar/Rover) .	00-ON	1	<b>JF506E.SOL06</b>
706J	Lock Up Solenoid (Mazda/Mondeo).....	00-ON	1	<b>JF506E.SOL10</b>
707J	2-4 Brake Timing Solenoid (Galaxy/Sharan/Jaguar/Rover) .	00-ON	1	<b>JF506E.SOL05</b>
707J	Neutral Shift Solenoid (Mazda/Mondeo, Black Conn) ..	00-ON	1	<b>JF506E.SOL12</b>
708J	2-4 Brake Duty Solenoid (Galaxy/Sharan/Jaguar/Rover) .	00-ON	1	<b>JF506E.SOL07</b>
708J	2-4 Brake Solenoid (Mazda/Mondeo).....	00-ON	1	<b>JF506E.SOL13</b>
709J	Range Switch (Galaxy/Sharan)	00-ON	1	<b>JF506E.ELE01</b>
709J	Range Switch (Rover 75 V6 2500cc).....	99-ON	1	<b>JF506E.ELE02</b>
709J	Range Switch (Rover 75 2.0L TD) .....	99-ON	1	<b>JF506E.ELE13</b>
709J	Range Switch (Land Rover Freelander).....	00-ON	1	<b>JF506E.ELE03</b>
709J	Range Switch (Rover 45 V6 2000cc).....	00-ON	1	<b>JF506E.ELE03</b>
709J	Range Switch (Ford Mondeo) .....	00-ON	1	<b>JF506E.ELE10</b>
709J	Range Switch (Jaguar X-Type 2.5L V6).....	00-ON	1	<b>JF506E.ELE12</b>
710J	Intermediate Speed Sensor (OEM) .....	00-ON	1	<b>JF506E.ELE04</b>
710J	Intermediate Speed Sensor (Aftermarket) .....	00-ON	1	<b>JF506E.ELE54</b>
711J	Vehicle Speed Sensor (OEM)...	00-ON	1	<b>JF506E.ELE04</b>
711J	Vehicle Speed Sensor (Aftermarket) .....	00-ON	1	<b>JF506E.ELE54</b>
712J	Turbine Speed Sensor (OEM) ..	00-ON	1	<b>JF506E.ELE04</b>
712J	Turbine Speed Sensor (Aftermarket) .....	00-ON	1	<b>JF506E.ELE54</b>

# JATCO JF506E (Jaguar, Rover, Land Rover, Ford, Mazda, VW & Seat) 5 SPEED FWD (Electronic Control)



AUTOMATIC CHOICE



THE AUTOMATIC TRANSMISSION PARTS WAREHOUSE

ILL NO.	DESCRIPTION	YEARS	QTY	PART NO
<b>ELECTRICAL COMPONENTS Cont...</b>				
713J	Solenoid Wiring Loom (Mondeo).....	2/02-ON	1	JF506E.ELE05
713J	Solenoid Wiring Loom (Galaxy / Sharan).....	00-ON	1	JF506E.ELE07
714J	Internal Speed Sensor Loom Red 8 Pin Connector (Galaxy / Sharan) .....	00-ON	1	JF506E.ELE08
714J	Internal Speed Sensor Loom Black 10 Pin Connector Plus Temp Sensor (Mondeo) ....	00-ON	1	JF506E.ELE14
715J	Case Loom (Galaxy / Sharan) ..	00-ON	1	JF506E.ELE06
715J	Case Loom (3 Speed Sensors) (Freelander) .....	00-06	1	JF506E.ELE15
715J	Case Loom (2 Speed Sensors) (Freelander from VIN 3A000001).	06-ON	1	JF506E.ELE16
<b>VALVE BODY PARTS</b>				
750J	Valve Body Assy (OEM) (Galaxy, Sharan, Alhambra) .....	00-ON	1	JF506E.VB01
750J	Valve Body Assy (Remanufactured) (VW, Galaxy, Seat).....	00-ON	1	JF506E.VB02
750J	Valve Body Assy (Remanufactured) (Jaguar/Land Rover) .....	00-ON	1	JF506E.VB03
750J	Valve Body Assy (Remanufactured) (Mazda/Ford) .....	00-ON	1	JF506E.VB04
Kit	TCC Control Plunger Valve Assy (Sonnax® <a href="#">Click Here for Info</a> ) ...	00-ON	1	JF506E.VA01
Kit	TCC Control Valve & Plunger Assy (Sonnax® <a href="#">Click Here for Info</a> ) ...	00-ON	1	JF506E.VA06
Kit	Oversize Pressure Regulator Valve (Requires Tool JF506E.VA05 & Valve Body Fixture AG4.VA05) (Sonnax® <a href="#">Click Here for Info</a> ) ...	00-ON	1	JF506E.VA02
Kit	Toolkit for JF506E.VA02 (Sonnax®).....	00-ON	1	JF506E.VA05
Kit	TC Pressure Regulator Valve & Sleeve (Requires Toolkit JF506E.VA04 & Valve Body Fixture AG4.VA05) (Sonnax® <a href="#">Click Here for Info</a> ) ...	00-ON	1	JF506E.VA03
Kit	Toolkit for JF506E.VA03 (Sonnax®).....	00-ON	1	JF506E.VA04
Kit	Neutral Control Valve, Oversize (Requires Toolkit JF506E.VA08 & Valve Body Fixture AG4.VA05) (Sonnax® <a href="#">Click Here for Info</a> ) ...	00-ON	1	JF506E.VA07
Kit	Toolkit for JF506E.VA07 (Sonnax®).....	00-ON	1	JF506E.VA08
<b>HARD PARTS</b>				
800A	Pump Assembly .....	00-ON	1	JF506E.PUM01
803A	Input Shaft.....	00-ON	1	JF506E.SH01
810C	Drum, Low Clutch .....	00-ON	1	JF506E.DRU03
813D	Planetary Kit Complete (Used) .	00-ON	1	JF506E.PLK11
814D	Rear Planetary (Used) .....	00-ON	1	JF506E.PL12
816D	Front Planetary (Used).....	00-ON	1	JF506E.PL11
820E	High Clutch Piston .....	00-ON	1	JF506E.PIS04
821E	Reverse Clutch Piston .....	00-ON	1	JF506E.PIS01
822E	Drum, High & Reverse .....	00-ON	1	JF506E.DRU01
823E	Piston, 2-4 Brake (161.70mm I.D.).....	00-ON	1	JF506E.PIS05
	(164.30mm I.D.).....	00-ON	1	JF506E.PIS06
834H	Piston, Direct Clutch (5.20mm High) .....	00-ON	1	JF506E.PIS09
	(6.80mm High) .....	00-ON	1	JF506E.PIS07
	(8.40mm High) .....	00-ON	1	JF506E.PIS08

ILL NO.	DESCRIPTION	YEARS	QTY	PART NO
<b>HARD PARTS Cont...</b>				
835H	Drum, Direct Clutch (Need Sun Gear Tooth Count) ..	00-ON	1	JF506E.DRU02
835H	Drum, Direct Clutch (VW, 31 Tooth Sun Gear) .....	00-ON	1	JF506E.DRU31
835H	Drum, Direct Clutch (Not VW, 31 Tooth Sun Gear) ...	00-ON	1	JF506E.DRU32
835H	Drum, Direct Clutch (23 Tooth Sun Gear) .....	00-ON	1	JF506E.DRU33
836H	Reduction One Way Clutch (Used) .....	00-ON	1	JF506E.OWC11
839J	Servo Cover, Aluminium (Bolt in Type Galaxy, VW, Seat)	00-ON	1	JF506E.SER03
839J	Servo Cover, Aluminium (Bolt in Type Mondeo/Mazda) ...	00-ON	1	JF506E.SER05
842J	Servo Cover Damper Piston (Bolt in Type Servo 20mm Boss VW/Ford/Mazda) ...	00-ON	1	JF506E.SER04
847J	Rear Cover Assembly (Stamped 09A 321 827) .....	00-ON	1	JF506E.COV01
847J	Rear Cover Assembly (Stamped 09A 321 827A).....	00-ON	1	JF506E.COV02
869J	Bottom Pan (VW/Galaxy).....	00-ON	1	JF506E.PAN01
870J	Servo Cover, Aluminium (Circlip Type).....	00-ON	1	JF506E.SER01
871J	Servo Cover Damper Piston (Circlip Type Servo 25mm Boss Jaguar/Rover) .....	00-ON	1	JF506E.SER02
<b>SPECIAL ITEMS</b>				
900J	Oil Cooler Assy (Galaxy).....	00-ON	1	JF506E.COOL01
<b>TOOLS &amp; MANUALS</b>				
NI	Mazda JA5A-EL Repair Manual (OEM) .....	00-ON		JF506E.MAN01
NI	JF506E Repair Manual (ATSG) .....	00-ON		JF506E.MAN02
NI	JF506E Repair Manual Update (ATSG) .....	00-ON		JF506E.MAN03
NI	Valve Body Reaming Fixture (Sonnax® <a href="#">Click Here for Info</a> ) ...	00-ON		AG4.VA05
<a href="#">Click here to view special tools for this transmission</a>				
<b>TRANSFER CASES &amp; PARTS</b>				
<b>See Transfer Box Section</b>				

# JATCO JF506E (Jaguar, Rover, Land Rover, Ford, Mazda, VW & Seat) 5 SPEED FWD (Electronic Control)



AUTOMATIC CHOICE



THE AUTOMATIC TRANSMISSION PARTS WAREHOUSE

ILL NO.	DESCRIPTION	YEARS	QTY	PART NO
<b>SOLENOID IDENTIFICATION</b>				
No.	Colour	Description	VW/Audi Designation	
700	Green	Line Pressure	N93	
701	Brown	Shift Sol 'B'	N89	
702	Green	Shift Sol 'C'	N92	
703	Black	Low Clutch Timing	N90	
704	Brown	Shift Sol 'A'	N88	
705	White	Reduction Timing	N281	
706	Black	Lock Up	N91	
707	Black	2-4 Brake Timing	N282	
708	White	2-4 Brake Duty	N283	

ILL NO.	DESCRIPTION	YEARS	QTY	PART NO
---------	-------------	-------	-----	---------