

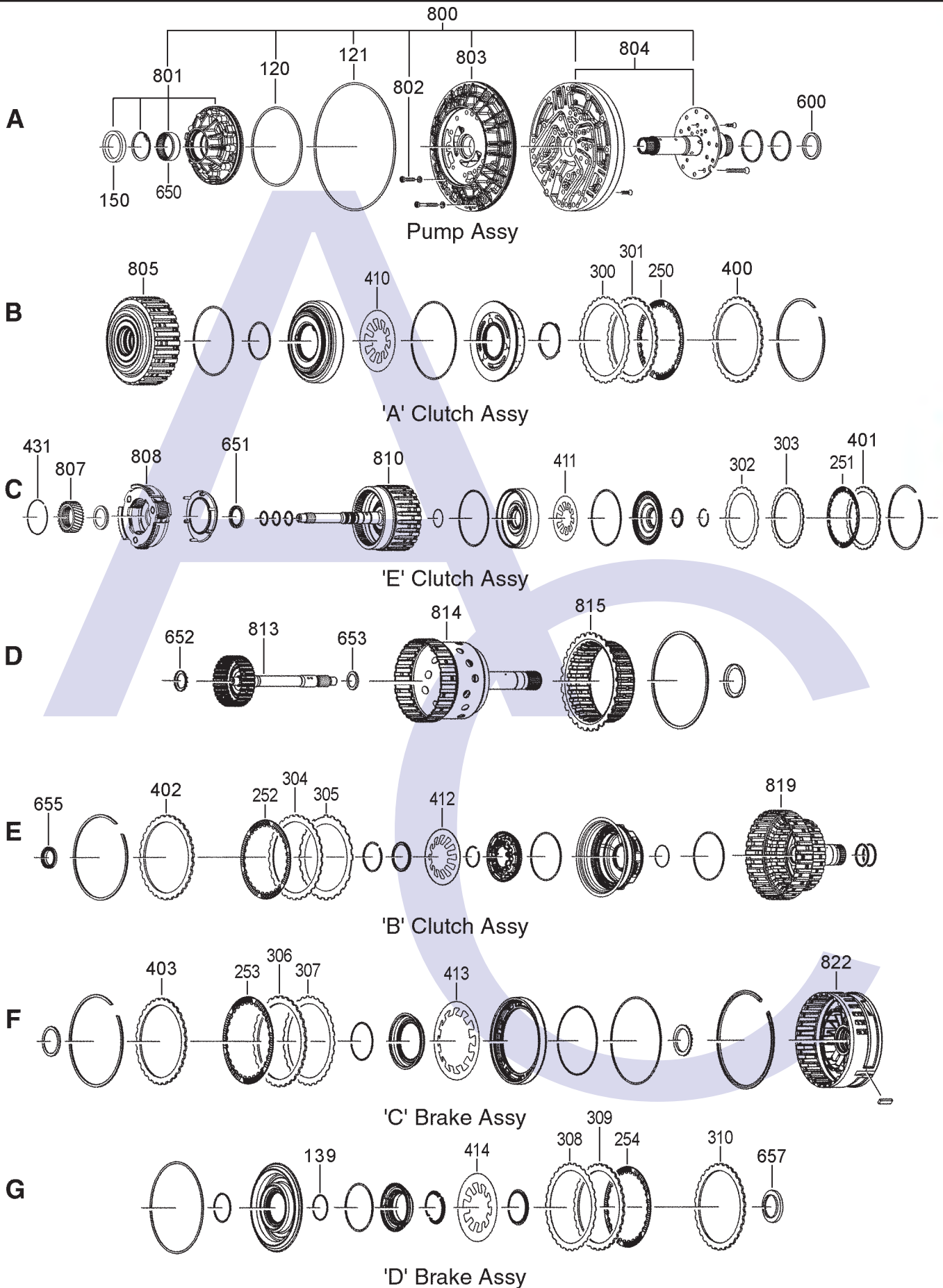
Ford 6R60E/6R75E (2006 - On) 6R80E (2007 - On) 6 SPEED 2WD & 4WD (Full Electronic Control)



AUTOMATIC CHOICE



THE AUTOMATIC TRANSMISSION PARTS WAREHOUSE



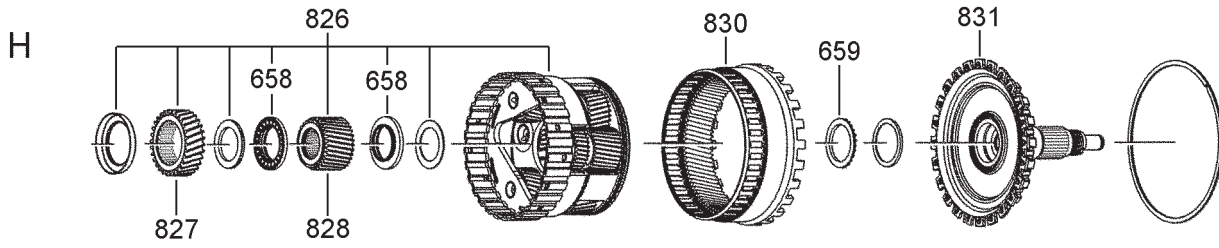
Ford 6R60E/6R75E (2006 - On) 6R80E (2007 - On) 6 SPEED RWD (Full Electronic Control)



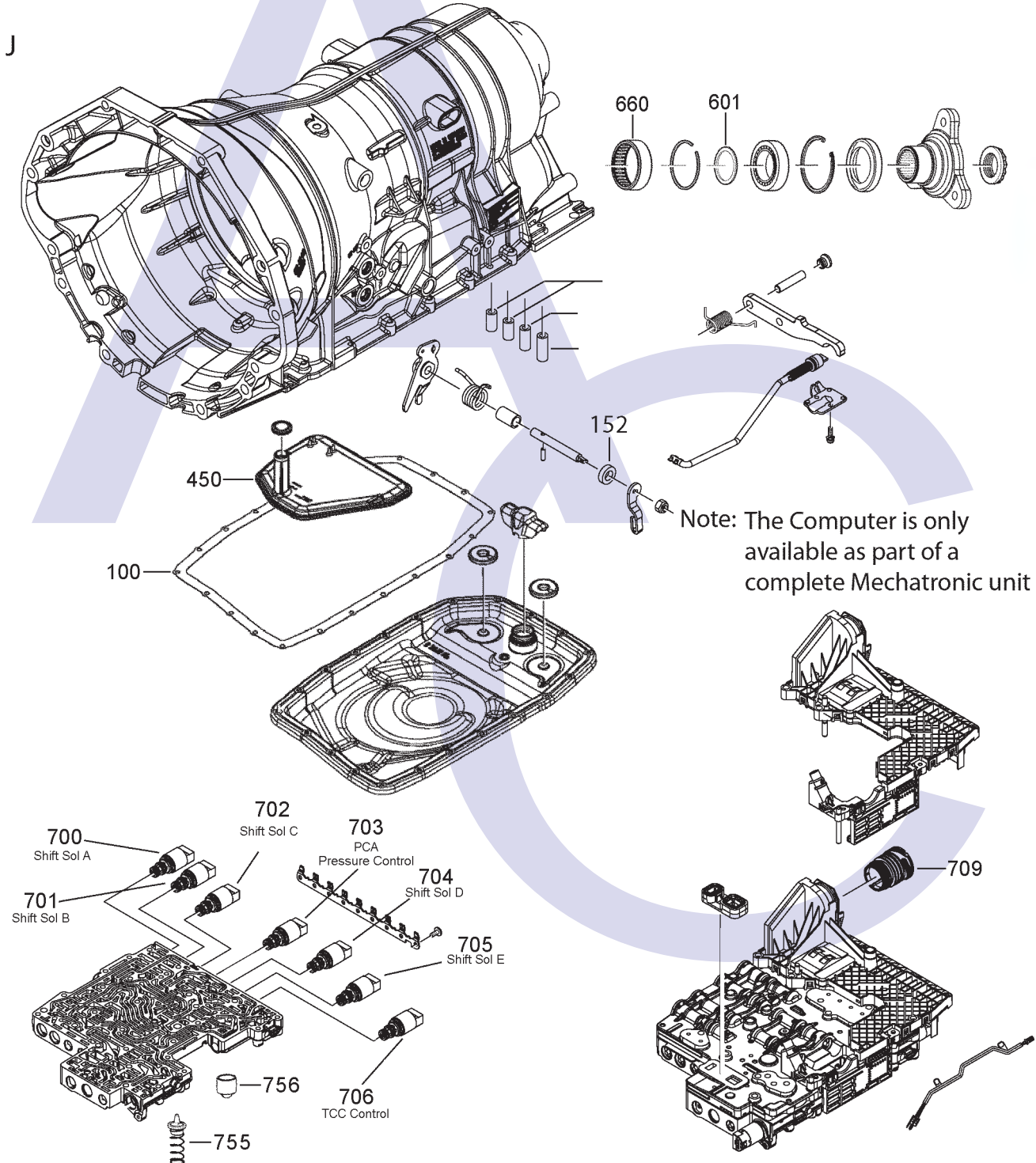
AUTOMATIC CHOICE



THE AUTOMATIC TRANSMISSION PARTS WAREHOUSE



Rear Planetary Assembly



Note: The Computer is only available as part of a complete Mechatronic unit

Ford 6R60E/6R75E (2006 - On) 6R80E (2007 - On)

6 SPEED RWD (Full Electronic Control)



AUTOMATIC CHOICE

ILL NO.	DESCRIPTION	YEARS	QTY	PART NO
KITS				
Kit	Overhaul Kit (Transtec).....	06-ON	1	6R60E.OHK01
Kit	Overhaul Kit (Aftermarket).....	06-ON	1	6R60E.OHK05
GASKETS				
100J	Pan Gasket.....	06-ON	1	6R60E.GAS01
RUBBER COMPONENTS				
120A	'O' Ring, Pump to Stator.....	06-ON	1	4HP24.OR01
121A	'O' Ring, Stator to Case.....	06-ON	1	5HP18.OR02
127C	'O' Ring, 'E' Clutch Piston (Inner).....	06-ON	1	5HP24.OR03
139G	'O' Ring, 'D' Damper Inner.....	01-ON	1	6HP19.OR02
METAL CLAD SEALS				
150A	Front Pump.....	06-ON	1	6HP26.MCS01
151J	Extension Housing (2wd).....	06-ON	1	6HP26.MCS02
151J	Extension Housing (4wd).....	06-ON	1	6HP26.MCS03
152J	Selector Shaft Seal (10mm x 18mm x 5mm).....	06-ON	1	3HP22.MCS03
MOULDED PISTONS				
SEALING RINGS				
Kit	Sealing Ring Kit.....	06-ON	1	6R60E.SRK01
FRICITION PLATES				
Kit	Friction Plate (6R60E) (Alto).....	06-ON	1	6R60E.FRK51
Kit	Friction Plate (6R80E) (Alto).....	07-ON	1	6R60E.FRK52
250B	'A' Clutch.....	06-ON	4-5	6HP26.FRP01
251C	'E' Clutch.....	06-ON	5-7	6HP26.FRP06
252E	'B' Clutch.....	06-ON	4-5	6HP26.FRP03
253F	'C' Brake.....	06-ON	4-5	6HP26.FRP03
254G	'D' Brake.....	06-ON	6-7	6HP26.FRP01
STEEL PLATES				
Kit	Steel Plate (6R60E).....	06-ON	1	6R60E.STK01
Kit	Steel Plate (6R80E).....	07-ON	1	6R60E.STK02
300B	Waved Steel 'A' Clutch.....	06-ON	1	6HP26.STP11
301B	'A' Clutch Steel (3.00mm).....	06-ON	4-5	6HP26.STP01
302C	Waved Steel 'E' Clutch.....	06-ON	1	6HP26.STP07
303C	'E' Clutch Steel (2.40mm).....	06-ON	6-7	6HP26.STP02
304E	'B' Clutch Steel (2.10mm).....	06-ON	4-5	6HP26.STP03
305E	Waved Steel 'B' Clutch.....	06-ON	1	6HP26.STP11
306F	'C' Brake Steel (3.00mm).....	06-ON	4-5	6HP26.STP01
307F	Waved Steel 'C' Brake.....	06-ON	1	6HP26.STP08
308G	Waved Steel 'D' Brake.....	06-ON	1	6HP26.STP11
309G	'D' Brake Steel (2.10mm).....	06-ON	6-7	6HP26.STP03
310G	End Steel 'D' Brake (Selective) (2.10mm Thick).....	06-ON	1	6HP26.STP03
	(3.00mm Thick).....	06-ON	1	6HP26.STP01

ILL NO.	DESCRIPTION	YEARS	QTY	PART NO
PRESSURE PLATES				
400B	'A' Clutch.....	01-ON	1	6HP26.PP04
401C	'E' Clutch.....	01-ON	1	6HP26.PP02
402E	'B' Clutch.....	06-ON	1	6HP26.PP03
403F	'C' Brake (3.90mm).....	06-ON	1	6HP26.PP01
SPRINGS & CIRCLIPS				
410B	Diaphragm 'A' Clutch.....	06-ON	1	6HP26.DIA01
411C	Diaphragm 'E' Clutch.....	06-ON	1	6HP26.DIA02
412E	Diaphragm 'B' Clutch.....	06-ON	1	6HP26.DIA03
413F	Diaphragm 'C' Brake.....	06-ON	1	6HP26.DIA05
414G	Diaphragm 'D' Brake.....	06-ON	1	6HP26.DIA04
431C	Snap Ring, Front Planet to 'A' Clutch Drum.....	06-ON	1	6HP26.RET01
FILTERS				
450J	Pick Up Filter.....	06-ON	1	6R60E.FIL01
450J	Pick Up Filter (Shallow Pan).....	11-ON	1	6R60E.FIL03
BUSHINGS				
Kit	Bushing Kit.....	06-ON	1	6R60.BK01
THRUST WASHERS & BEARINGS				
Kit	Thrust washer Kit.....	06-ON	1	6R60E.TWK01
Kit	Bearing Kit.....	06-ON	1	6R60E.TWK02
600A	Shim, Selective (Rear of Pump)			
	(2.60mm Thick).....	06-ON	AR	6HP26.SHIM01
	(2.80mm Thick).....	06-ON	AR	6HP26.SHIM02
	(3.00mm Thick).....	06-ON	AR	6HP26.SHIM03
	(3.20mm Thick).....	06-ON	AR	6HP26.SHIM04
	(3.40mm Thick).....	06-ON	AR	6HP26.SHIM05
	(3.60mm Thick).....	06-ON	AR	6HP26.SHIM06
	(3.80mm Thick).....	06-ON	AR	6HP26.SHIM07
	(4.00mm Thick).....	06-ON	AR	6HP26.SHIM08
	(4.20mm Thick).....	06-ON	AR	6HP26.SHIM09
	(4.40mm Thick).....	06-ON	AR	6HP26.SHIM10
	(4.60mm Thick).....	06-ON	AR	6HP26.SHIM11
	(4.80mm Thick).....	06-ON	AR	6HP26.SHIM12
601J	Shim, Selective (Output Shaft)			
	(1.00mm Thick).....	06-ON	AR	6HP26.SHIM22
	(1.20mm Thick).....	06-ON	AR	6HP26.SHIM13
	(1.40mm Thick).....	06-ON	AR	6HP26.SHIM14
	(1.60mm Thick).....	06-ON	AR	6HP26.SHIM15
	(1.80mm Thick).....	06-ON	AR	6HP26.SHIM16
	(2.00mm Thick).....	06-ON	AR	6HP26.SHIM17
	(2.20mm Thick).....	06-ON	AR	6HP26.SHIM18
	(2.40mm Thick).....	06-ON	AR	6HP26.SHIM19
	(2.60mm Thick).....	06-ON	AR	6HP26.SHIM20
	(2.80mm Thick).....	06-ON	AR	6HP26.SHIM21
650A	Needle Bearing (Front Pump).....	06-ON	1	6HP26.BE01
651C	Radial Bearing, 'E' Clutch to Front Planetary.....	06-ON	1	6HP26.TOR01
652D	Radial Bearing, 'E' Clutch to Intermediate Shaft.....	06-ON	1	6HP26.TOR02
653D	Radial Bearing, Sun Gear Shaft to Intermediate Shaft.....	06-ON	1	6HP26.TOR01
655E	Radial Bearing, 'B' Clutch to Sun Gear Shaft.....	06-ON	1	6HP26.TOR03



THE AUTOMATIC TRANSMISSION PARTS WAREHOUSE

Ford 6R60E/6R75E (2006 - On) 6R80E (2007 - On)

6 SPEED RWD (Full Electronic Control)



AUTOMATIC CHOICE



THE AUTOMATIC TRANSMISSION PARTS WAREHOUSE

ILL NO.	DESCRIPTION	YEARS	QTY	PART NO
THRUST WASHERS & BEARINGS Cont...				
657G	Radial Bearing, ('D' Brake to Rear Sun Gear)....	06-ON	1	6HP26.TOR05
658H	Radial Bearing, Rear Planetary	06-ON	2	6HP26.TOR04
659H	Radial Bearing, (Rear Planet to O. Shaft)	06-ON	1	6HP26.TOR06
660J	Needle Bearing, Output Shaft...	06-ON	1	6HP26.BE02
ELECTRICAL COMPONENTS				
Kit	Solenoid Kit.....	06-ON	1	6R60E.SOL01
700J	SSA Solenoid (PWM)	06-ON	1	TBA
701J	SSB Solenoid (PWM)	06-ON	1	TBA
702J	SSC Solenoid (PWM)	06-ON	1	TBA
703J	PCA Solenoid (PWM) (Pressure Control).....	06-ON	1	TBA
704J	SSD Solenoid (PWM)	06-ON	1	TBA
705J	SSE Solenoid (On/Off)	06-ON	1	TBA
706J	TCC Solenoid (PWM) (TCC Control).....	06-ON	1	TBA
709J	Case Connector.....	06-ON	1	6R60E.ELE01
VALVE BODY PARTS				
Kit	Valve Body End Plug Kit	06-ON	1	6HP26.VA02
755J	Spring & Cap Assy (Return Valve for Clutches & Retaining Valve for Converter Pressure)	06-ON	2	6HP26.VA01
756J	Damper Piston	06-ON	6	5HP19.ACC02
Kit	Pressure Regulator Valve (Oversize) Requires Toolkit 6HP19.VA02 & AG4.VA05 Universal Fixture (Sonnax® Click here for Info) ..	06-ON	1	6HP19.VA01
Kit	Toolkit for 6HP19.VA01 (Sonnax®).....	06-ON	1	6HP19.VA02
Kit	Sleeve, Pressure Regulator Valve (Sonnax® Click here for Info) ..	06-ON	1	6HP19.VA03
Kit	Valve Body End Plug (13mm & 17mm) (Sonnax® Click here for Info) ..	06-ON	1	6HP19.VA04
Kit	Valve Body End Plug (12mm) (Sonnax® Click here for Info) ..	06-ON	1	6HP19.VA05
Kit	Boost Valve & Sleeve (Sonnax® Click here for Info) ..	06-ON	1	6HP19.VA06
Kit	Accumulator Pistons & Springs (Sonnax® Click here for Info) ..	06-ON	1	6HP19.VA07
Kit	Lubrication Control Valve (Oversize) Requires Toolkit 6HP19.VA09 & AG4.VA05 Universal Fixture (Sonnax® Click here for Info) ..	06-ON	1	6HP19.VA08
Kit	Toolkit for 6HP19.VA08 (Sonnax®).....	06-ON	1	6HP19.VA09
Kit	Solenoid Pressure Regulator Valve (Oversize) Requires Toolkit 6HP19.VA11 & AG4.VA05 Universal Fixture (Sonnax® Click here for Info) ..	06-ON	1	6HP19.VA10
Kit	Toolkit for 6HP19.VA10 (Sonnax®).....	06-ON	1	6HP19.VA11
Kit	Converter Release Regulator Valve (Oversize) Requires Toolkit 6HP19.VA14 & AG4.VA05 Universal Fixture (Sonnax® Click here for Info) ..	06-ON	1	6HP19.VA13

ILL NO.	DESCRIPTION	YEARS	QTY	PART NO
VALVE BODY PARTS Cont...				
Kit	Toolkit for 6HP19.VA13 (Sonnax®).....	06-ON	1	6HP19.VA14
Kit	Bypass Clutch Control Valve (Oversize) Requires Toolkit 6HP19.VA16 & AG4.VA05 Universal Fixture (Sonnax® Click here for Info) ..	06-ON	1	6HP19.VA15
Kit	Toolkit for 6HP19.VA15 (Sonnax®).....	06-ON	1	6HP19.VA16
Kit	'D1''E' Clutch Control Valve (Oversize) Requires Toolkit 6HP19.VA12 & AG4.VA05 Universal Fixture (Sonnax® Click here for Info) ..	06-ON	1	6HP19.VA17
Kit	'A' Clutch Control Valve (Oversize) Requires Toolkit 6HP19.VA12 & AG4.VA05 Universal Fixture (Sonnax® Click here for Info) ..	06-ON	1	6HP19.VA18
Kit	Toolkit for 6HP19.VA17 & VA18 (Sonnax®).....	06-ON	1	6HP19.VA12
Kit	Valve Body Correction Package (Sonnax® ZIP KIT) (Click here for Info)	06-ON	1	6HP19.ZIP01
Kit	Valve Body Parts (Contains Accumulator Rubbers, Check Balls, Check Valves and Filters for the Valve Body).....	06-ON	1	6HP26.GK01
NI	Bonded Rubber Intermediate Plate for Mechatronic Unit / Valve Body ..	06-ON	1	6R60E.SP01
Click here for complete Sonnax® Valve Body Diagram				
HARD PARTS				
800A	Pump Assembly (27 Spline Stator).....	06-ON	1	6R60E.PUM01
801A	Short Pump Assy (All Except Ford Falcon Code 1068 010 175)	06-ON	1	6HP26.PUM01
802A	Pump Bolt (M6 x 20mm)	06-ON	1	4HP20.NUT03
803A	Pump Cover	06-ON	1	6R60E.PUM03
804A	Stator Housing & Tube (27 Splines).....	06-ON	1	6R60E.PUM04
805B	'A' Clutch Drum (Forward).....	06-ON	1	6R60E.DRU01
807C	Sun Gear, Front Planetary	06-ON	1	6R60E.SUN01
808C	Front Planetary	06-ON	1	6R60E.PL01
810C	'E' Clutch Drum (Overdrive) (2 Rings, 6 Plate)	06-ON	1	6R60E.DRU03
813D	Hub, Overdrive w/ Shaft (1.200" Long Pilot)	06-ON	1	6R60E.HUB03
814D	Hub, Forward w/ Shaft	06-ON	1	6R60E.HUB01
815D	Hub, Direct	06-ON	1	6R60E.HUB02
819E	'B' Clutch Dum (Direct).....	06-ON	1	6R60E.DRU02
822F	'C'/'D' Brake Drum (Centre Support)	06-ON	1	6R60E.SUP01
826H	Rear Planetary Kit.....	06-ON	1	6HP26.PLK02
827H	Sun Gear 1, Rear Planetary.....	06-ON	1	6R60E.SUN02
828H	Sun Gear 2, Rear Planetary.....	06-ON	1	6R60E.SUN03
830H	Rear Ring Gear	06-ON	1	6R60E.PL03
831H	Output Shaft (2WD)	06-ON	1	6R60E.SH01
831H	Output Shaft (4WD)	06-ON	1	6R60E.SH02

Ford 6R60E/6R75E (2006 - On) 6R80E (2007 - On)

6 SPEED RWD (Full Electronic Control)



AUTOMATIC CHOICE



THE AUTOMATIC TRANSMISSION PARTS WAREHOUSE

ILL NO.	DESCRIPTION	YEARS	QTY	PART NO
SPECIAL ITEMS				
NI	LifeGuardFluid6 Transmission Fluid (Shell M-1375.4)			
	(1 x 1 Ltr Bottle)	06-ON	AR	OIL.53
	(1 x 20 Ltr Canister)	06-ON	AR	OIL.54
	(1 x 209 Ltr Barrel)	06-ON	AR	OIL.55
TOOLS & MANUALS				

ILL NO.	DESCRIPTION	YEARS	QTY	PART NO