

# 4L80E (MT-1)

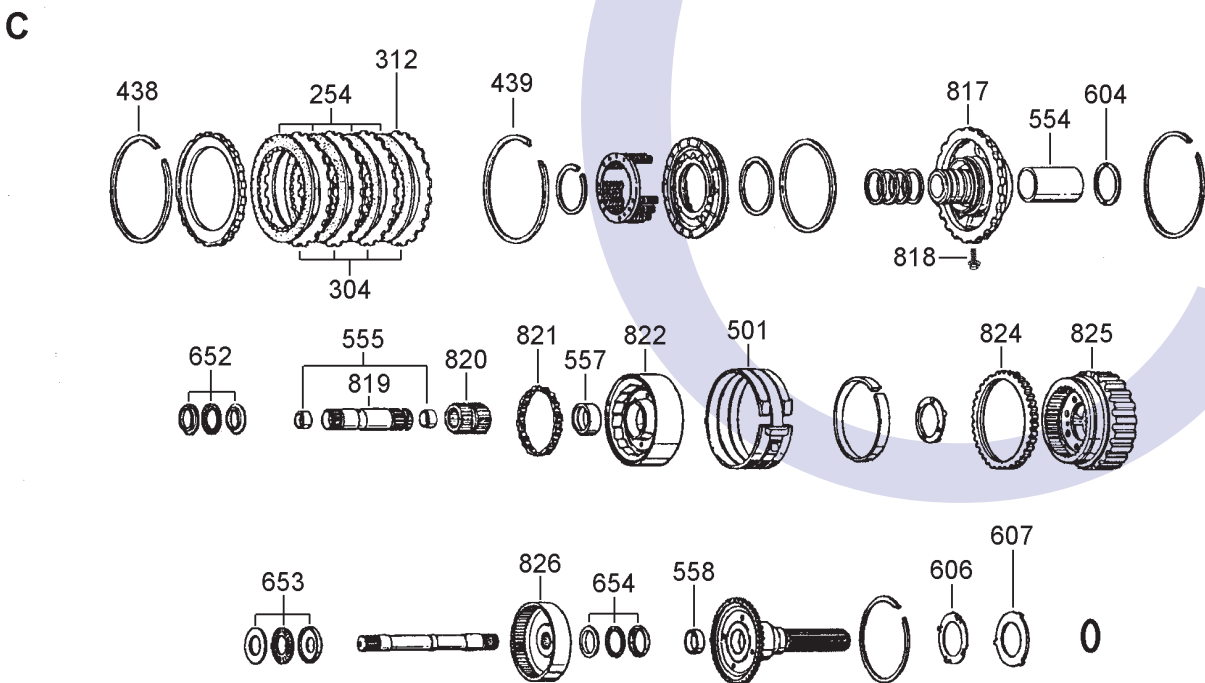
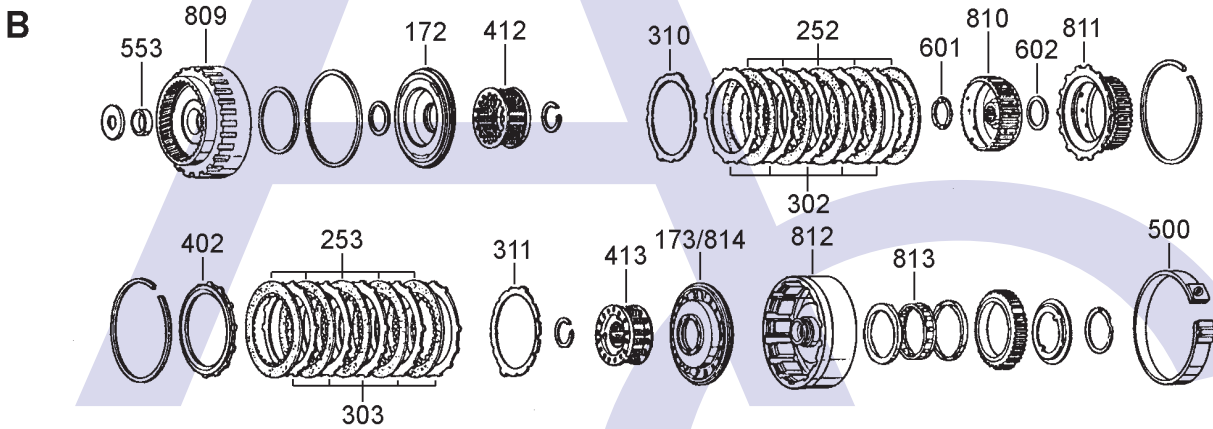
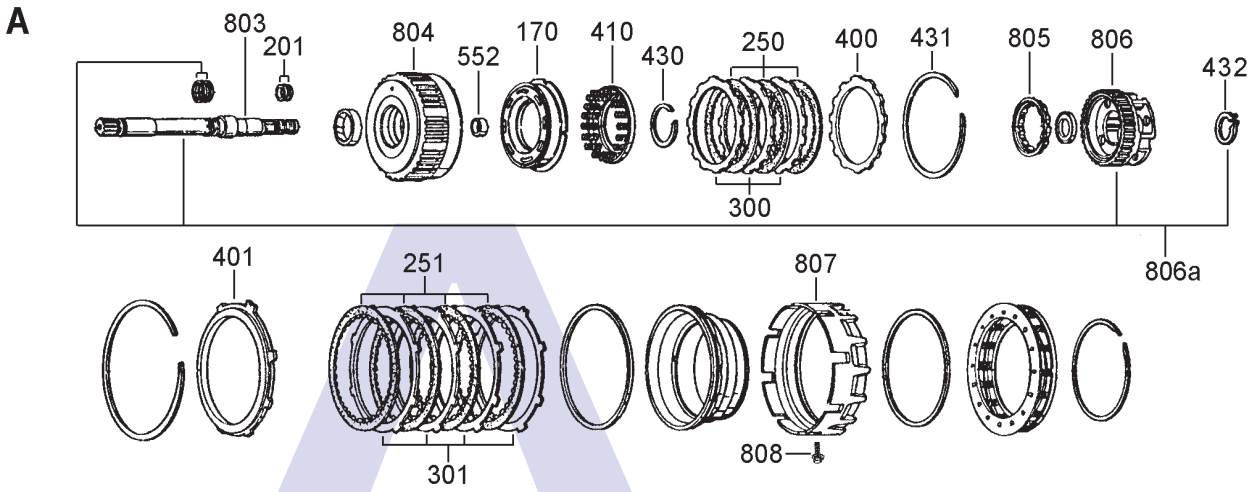
## 4 SPEED RWD (Electronic Control)



AUTOMATIC CHOICE



THE AUTOMATIC TRANSMISSION PARTS WAREHOUSE



# 4L80E (MT-1)

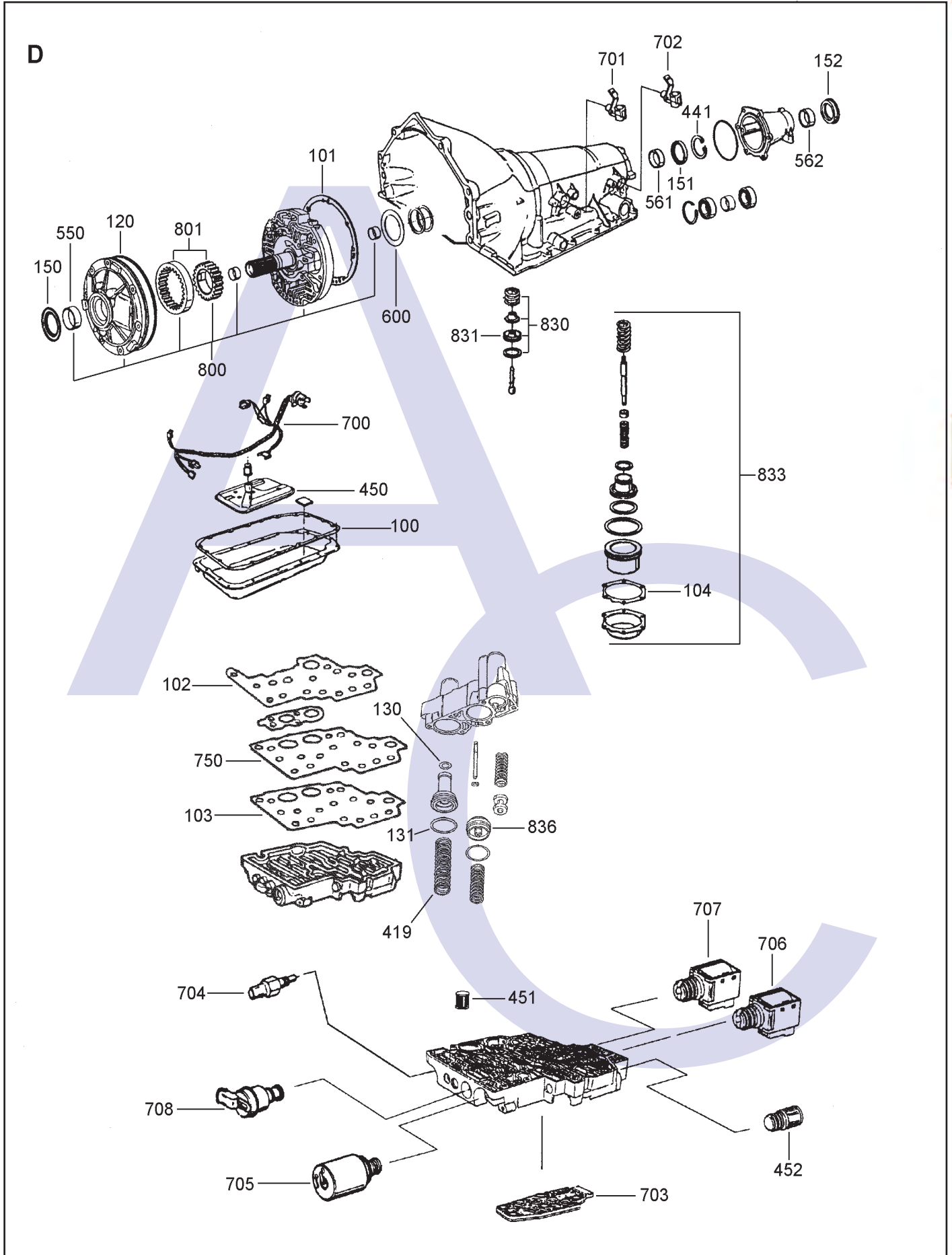
## 4 SPEED RWD (Electronic Control)



AUTOMATIC CHOICE



THE AUTOMATIC TRANSMISSION PARTS WAREHOUSE



# 4L80E (MT-1)

## 4 SPEED RWD (Electronic Control)



AUTOMATIC CHOICE



THE AUTOMATIC TRANSMISSION PARTS WAREHOUSE

ILL NO.	DESCRIPTION	YEARS	QTY	PART NO
<b>KITS</b>				
Kit	Master Overhaul Kit (Less Jaguar Pan Gasket) .....	91-ON	1	<b>4L80E.MOHK01</b>
Kit	Overhaul Kit (Transtec) (Less Jaguar Pan Gasket) .....	91-ON	1	<b>4L80E.OHK01</b>
Kit	Overhaul Kit (Precision) (Less Pan Gasket) .....	91-96	1	<b>4L80E.OHK51</b>
Kit	Overhaul Kit (Precision) (Less Pan Gasket & Pistons) ....	97-02	1	<b>4L80E.OHK52</b>
Kit	Sonnax™ Sure Cure Kit.....	91-ON	1	<b>4L80E.SCK01</b>
Kit	Plug, 4L80E, Pump Channel (Converts 4L80E.PUM02 to No Cooler) .....	97-On	1	<b>4L80E.GSK01</b>
<b>GASKETS</b>				
100D	Oil Pan Except Jaguar .....	91-ON	1	<b>4L80E.GAS01</b>
100D	Oil Pan Except Jaguar (OEM Style Metal Core).....	91-ON	1	<b>4L80E.GAS03</b>
100D	Oil Pan Jaguar Only.....	93-ON	1	<b>4L80E.GAS02</b>
101D	Pump to Case .....	91-ON	1	<b>4L80E.GAS04</b>
102D	Valve Body (Upper).....	91-ON	1	<b>4L80E.GAS06</b>
103D	Valve Body (Lower).....	91-ON	1	<b>4L80E.GAS05</b>
104D	Rear Servo Cover .....	91-ON	1	<b>4L80E.GAS08</b>
<b>RUBBER COMPONENTS</b>				
120D	Pump to Case Seal.....	91-ON	1	<b>TH400.SQR01</b>
130D	Seal, Lathe Cut 1-2 Accumulator (Inner) .....	91-ON	1	<b>4L80E.SQR04</b>
131D	Seal, Lathe Cut 1-2 Accumulator (Outer).....	91-ON	1	<b>4L80E.SQR05</b>
NI	Seal, Lathe Cut 3rd Accumulator (Small).....	91-ON	1	<b>4L80E.SQR06</b>
NI	Seal, Lathe Cut 3rd Accumulator (Large) .....	91-ON	1	<b>4L80E.SQR07</b>
NI	'O' Ring, Pump Bolt.....	91-ON	7	<b>4L80E.GAS07</b>
<b>METAL CLAD SEALS</b>				
150D	Front Pump .....	91-ON	1	<b>4L80E.MCS01</b>
151D	Case Seal .....	91-ON	1	<b>4L80E.MCS03</b>
152D	Extension Housing (68.58mm OD) (w/ Boot).....	91-ON	1	<b>4L80E.MCS02</b>
152D	Extension Housing (68.58mm OD) (w/o Boot).....	91-ON	1	<b>TH400.MCS01</b>
152D	Extension Housing (73.15mm OD) (w/o Boot).....	91-ON	1	<b>TH400.MCS04</b>
NI	Selector Shaft .....	91-ON	1	<b>TH180.MCS03</b>
<b>MOULDED PISTONS</b>				
170A	Piston, Overrun Clutch (Bonded Rubber) .....	91-ON	1	<b>4L80E.PIS01</b>
172B	Piston, Forward Clutch (Bonded Lip Seal) .....	97-ON	1	<b>4L80E.PIS03</b>
172B	Piston, Forward Clutch (Bonded With 3.17mm Orifice)..	97-ON	1	<b>4L80E.PIS05</b>
172B	Piston, Forward Clutch (Bonded With 4.45mm Orifice)..	97-ON	1	<b>4L80E.PIS06</b>
172B	Piston, Forward Clutch (Bonded With 5.72mm Orifice)..	97-ON	1	<b>4L80E.PIS07</b>
173B	Piston, Direct Clutch (Bonded Rubber) .....	97-ON	1	<b>4L80E.PIS02</b>

ILL NO.	DESCRIPTION	YEARS	QTY	PART NO
<b>SEALING RINGS</b>				
Kit	Shaft Sealing Ring Kit.....	91-ON	1	<b>4L80E.SRK01</b>
201A	Turbine Shaft to Forward Drum (Teflon) .....	91-ON	2	<b>4L80E.SSR04</b>
<b>FRICTION PLATES</b>				
Kit	Friction Plate .....	90-96	1	<b>4L80E.FRK01</b>
Kit	Friction Plate (Alto) .....	90-96	1	<b>4L80E.FRK51</b>
Kit	Friction Plate (High Energy).....	97-ON	1	<b>4L80E.FRK02</b>
Kit	Friction Plate (Alto) .....	97-ON	1	<b>4L80E.FRK52</b>
250A	Overrun Clutch (136mm OD x 2.00mm x 45T) ..	91-ON	3	<b>4L80E.FRP01</b>
251A	4th Clutch/Overdrive Brake (185mm OD x 2.00mm x 60T) ..	91-ON	4	<b>4L80E.FRP02</b>
252B	Forward Clutch (Flat) (150mm OD x 2.00mm x 42T) ..	91-95	5	<b>TH400.FRP01</b>
252B	Forward Clutch (Flat) (Alto) (150mm OD x 2.00mm x 42T) ..	91-95	5	<b>TH400.FRP51</b>
252B	Forward Clutch (Hi-Energy, Graphite) (150mm OD x 2.00mm x 42T) ..	96-on	5	<b>4L80E.FRP05</b>
253B	Direct Clutch (Flat) (150mm OD x 2.00mm x 42T) ..	91-95	5-6	<b>TH400.FRP01</b>
253B	Direct Clutch (Hi-Energy, Graphite) (150mm OD x 2.00mm x 42T) ..	96-on	5-6	<b>4L80E.FRP05</b>
254C	Intermediate Brake (167mm OD x 2.00mm x 47T) ..	91-95	4	<b>4L80E.FRP03</b>
254C	Intermediate Brake (167mm OD x 1.80mm x 47T) ..	96-ON	4	<b>4L80E.FRP06</b>
<b>STEEL PLATES</b>				
Kit	Steel Plate.....	90-96	1	<b>4L80E.STK01</b>
Kit	Steel Plate (Alto).....	90-96	1	<b>4L80E.STK51</b>
Kit	Steel Plate.....	97-ON	1	<b>4L80E.STK02</b>
Kit	Steel Plate (Alto).....	97-ON	1	<b>4L80E.STK52</b>
300A	Overrun Clutch (115mm ID x 2.50mm x 14T) ....	91-96	3	<b>4L80E.STP01</b>
300A	Overrun Clutch With Turbulator Holes (115mm ID x 2.50mm x 14T) ....	97-ON	3	<b>4L80E.STP05</b>
301A	4th Clutch/Overdrive Brake (160mm ID x 2.50mm x 8T) .....	91-96	4	<b>4L80E.STP02</b>
301A	4th Clutch/Overdrive Brake With Turbulator Holes (160mm ID x 2.50mm x 8T) .....	97-ON	4	<b>4L80E.STP04</b>
302B	Forward Clutch Flat (116mm ID x 1.96mm x 12T) ....	91-ON	5	<b>TH400.STP02</b>
303B	Direct Clutch Flat (116mm ID x 2.30mm x 12T) ....	91-ON	5	<b>TH400.STP03</b>
304C	Intermediate Brake (127mm ID x 1.93mm x 21T) ....	91-ON	4	<b>4L80E.STP03</b>
310B	Forward Clutch Dished Steel (2 Tangs) .....	91-ON	1	<b>TH400.DIA01</b>
310B	Forward Clutch Waved (116mm ID x 1.00mm x 14T) ....	97-ON	1	<b>4L80E.STP06</b>
311B	Direct Clutch Dished Steel (2 Tangs) .....	91-ON	1	<b>TH400.DIA01</b>
311B	Direct Clutch Waved (116mm ID x 1.00mm x 14T) ....	97-ON	1	<b>4L80E.STP06</b>
312C	Intermediate Waved (127mm ID x 1.78mm x 21T) ....	64-98	1	<b>TH400.STP05</b>
<b>PRESSURE PLATES</b>				
400A	Overrun Clutch.....	91-ON	1	<b>4L80E.PP03</b>
401A	4th Clutch/Overdrive Brake.....	91-ON	1	<b>4L80E.PP02</b>
402B	Direct Clutch .....	91-ON	1	<b>4L80E.PP01</b>

# 4L80E (MT-1)

## 4 SPEED RWD (Electronic Control)



AUTOMATIC CHOICE



THE AUTOMATIC TRANSMISSION PARTS WAREHOUSE

ILL NO.	DESCRIPTION	YEARS	QTY	PART NO
<b>SPRINGS &amp; CIRCLIPS</b>				
Kit	1-2 & 2-3 Shift Valve Spring Kit (Includes Both Springs) (Sonnax® <a href="#">Click here for Info</a> ) ...	91-ON	1	<b>4L80E.SPR05</b>
410A	Retainer w/ Spring, Overrun Clutch Return .....	91-ON	1	<b>4L80E.SPR04</b>
412B	Retainer w/ Spring, Forward Clutch Return .....	91-ON	1	<b>4L80E.SPR03</b>
413B	Retainer w/ Spring, Direct Clutch Return .....	91-ON	1	<b>4L80E.SPR03</b>
419D	Spring, 3rd Clutch Accumulator (Green 85mm x 28mm) .....	91-ON	1	<b>4L80E.SPR01</b>
430A	Circlip, Spring Retainer to Drum (Overrun Clutch) .....	91-ON	1	<b>4L80E.CIR03</b>
431A	Circlip, Overrun Clutch Pressure Plate Retaining .....	91-ON	1	<b>4L80E.CIR04</b>
432A	Circlip, Turbine Shaft to Overdrive Planetary .....	91-ON	1	<b>4L80E.CIR08</b>
438C	Circlip, Intermediate Clutch (Outer) .....	91-ON	1	<b>4L80E.CIR05</b>
439C	Circlip, Intermediate Clutch (Inner) .....	91-ON	1	<b>4L80E.CIR06</b>
441D	Circlip, Rear Main Case Seal Retainer .....	91-ON	1	<b>4L80E.CIR07</b>
NI	Circlip, Front Servo Spring Retainer .....	91-ON	1	<b>4L80E.CIR01</b>
<b>FILTERS</b>				
450D	Pan Filter .....	91-96	1	<b>4L80E.FIL01</b>
450D	Pan Filter (17mm Deeper Pan) ..	97-ON	1	<b>4L80E.FIL05</b>
451D	Screen, Force Motor/Pressure Control Solenoid .....	91-ON	1	<b>4L80E.FIL02</b>
452D	Screen, Shift Solenoid (In Valve Body w/ O-Ring) .....	91-ON	2	<b>4L80E.FIL03</b>
NI	Screen, PWM/TCC Solenoid-In Case (Thimble Type) .....	91-ON	1	<b>4L80E.FIL04</b>
<b>BANDS</b>				
500B	Front (25.40mm Wide) .....	91-ON	1	<b>TH400.BAN01</b>
500B	Front (1 1/4" Wide) (Hi-Energy) (Will Retro Fit 91-ON) .....	99-ON	1	<b>TH400.BAN04</b>
501C	Reverse (New) .....	91-ON	1	<b>TH400.BAN02</b>
501C	Reverse (Reline) .....	91-ON	1	<b>TH400.BAN03</b>
501C	Reverse (Smooth Lining) (Updated Design) .....	97-ON	1	<b>4L80E.BAN01</b>
<b>BUSHES</b>				
Kit	Bush Kit .....	91-96	1	<b>4L80.BK01</b>
Kit	Bush Kit .....	97-ON	1	<b>4L80.BK02</b>
550D	Front Pump (14.00mm Wide) .....	91-96	1	<b>4L80E.BUS01</b>
550D	Front Pump (17.78mm Wide) .....	97-ON	1	<b>4L80E.BUS03</b>
552A	Overrun Drum (Rear) .....	91-ON	2	<b>TH400.BUS07</b>
553B	Forward Clutch Drum .....	91-ON	1	<b>4L80E.BUS08</b>
554C	Centre Support .....	91-E97	1	<b>4L80E.BUS04</b>
554C	Center Support, w/ Center Lube Circuit 102.20mm Long .....	L97-ON	1	<b>4L80E.BUS07</b>
555C	Sun Gear Shaft .....	91-ON	1-2	<b>TH400.BUS07</b>
557C	Planetary Carrier .....	91-ON	1	<b>TH400.BUS05</b>
558C	Output Shaft .....	91-ON	1	<b>TH400.BUS06</b>
561D	Case, (OEM Style) .....	91-ON	1	<b>4L80E.BUS06</b>
561D	Case, (Flanged "No Walk-Out") (Sonnax® <a href="#">Click Here for Info</a> ) ...	91-ON	1	<b>4L80E.BUS02</b>
561D	Case, (Flanged "No Walk-Out", Oversize) (Sonnax® <a href="#">Click Here for Info</a> ) ...	91-ON	1	<b>4L80E.BUS10</b>
562D	Extension Housing .....	91-ON	1	<b>4L80E.BUS05</b>

ILL NO.	DESCRIPTION	YEARS	QTY	PART NO
<b>THRUST BEARINGS &amp; WASHERS</b>				
Kit	Thrust Washer Kit .....	91-ON	1	<b>4L80E.TWK01</b>
Kit	Selective Pump Thrust Kit (5) ...	91-ON	1	<b>4L80E.TWK02</b>
Kit	Thrust Bearing Kit .....	91-ON	1	<b>4L80E.TWK03</b>
600D	Pump Stator to Overrun Clutch Housing (Blue 1.50mm Thick) .....	91-ON	AR	<b>4L80E.THW01</b>
	(Red 1.90mm Thick) .....	91-ON	AR	<b>4L80E.THW02</b>
	(Brown 2.30mm Thick) .....	91-ON	AR	<b>4L80E.THW03</b>
	(Green 2.70mm Thick) .....	91-ON	AR	<b>4L80E.THW04</b>
	(Black 3.10mm Thick) .....	91-ON	AR	<b>4L80E.THW05</b>
601B	Forward Clutch Hub to Forward Clutch Housing .....	91-ON	1	<b>TH400.THW08</b>
602B	Forward Clutch Hub to Direct Clutch Housing .....	91-ON	1	<b>TH400.THW09</b>
604C	Center Support to Front Planet (Metal) .....	91-ON	1	<b>TH400.THW10</b>
606C	Output Shaft to Case (4-Tang) (Metal) .....	91-ON	1	<b>TH400.THW15</b>
607C	Output Shaft to Case (3 Tang) Selective (1.93mm Thick) .....	91-ON	AR	<b>TH400.THW16</b>
	Selective (2.13mm Thick) .....	91-ON	AR	<b>TH400.THW17</b>
	Selective (2.34mm Thick) .....	91-ON	AR	<b>TH400.THW18</b>
	Selective (2.54mm Thick) .....	91-ON	AR	<b>TH400.THW19</b>
	Selective (2.74mm Thick) .....	91-ON	AR	<b>TH400.THW20</b>
	Selective (2.95mm Thick) .....	91-ON	AR	<b>TH400.THW21</b>
607C	Case Saver (3 Tang Washer Replacement) .	64-98	1	<b>TH400.THW23</b>
652C	Bearing w/ Race, Center Support to Sun Gear .....	91-ON	1	<b>TH400.THW11</b>
653C	Bearing w/ Race, Sun Gear to Rear Ring Gear .....	91-96	1	<b>TH400.THW13</b>
653C	Bearing w/ Race, Sun Gear to Rear Ring Gear .....	97-ON	1	<b>4L80E.TOR01</b>
654C	Bearing w/ Race, Rear Ring Gear to Output Shaft .....	91-ON	1	<b>TH400.THW14</b>
<b>ELECTRICAL COMPONENTS</b>				
Kit	Master Solenoid Kit .....	91-ON	1	<b>4L80E.SOL06</b>
700D	Wiring Harness, Universal Internal & External Repair w/ External Connectors & Wires With Temp Sensor) (Retro Fit) Rostra ( <b>Not Jaguar</b> ) ..	91-ON	1	<b>4L80E.ELE01</b>
700D	Wiring Harness, ( <b>Jaguar</b> ) .....	91-ON	1	<b>4L80E.ELE10</b>
701D	Input Speed Sensor .....	91-ON	1	<b>4L80E.ELE02</b>
702D	Output Speed Sensor .....	91-ON	1	<b>4L80E.ELE02</b>
703D	Switch, Manifold Pressure .....	91-ON	1	<b>4L80E.ELE05</b>
704D	Sensor, Temperature .....	91-ON	1	<b>4L80E.ELE07</b>
705D	Solenoid, EPC (Borg Warner) (OEM Has Black Connector) Needs <b>TH700.RET01</b> For Vehicles Between 1991 & 1993 .....	91-03	1	<b>4L30E.SOL01</b>
705D	Solenoid, EPC .....	04-ON	1	<b>4L80E.SOL07</b>
NI	Retaining Bracket (EPC Sol) .....	91-93	1	<b>TH700.RET01</b>
706D	Solenoid, 1-2, 3-4 Shift (Solenoid 'A') .....	91-ON	1	<b>4L80E.SOL02</b>
707D	Solenoid, 2-3 Shift (Solenoid 'B') .....	91-ON	1	<b>4L80E.SOL03</b>
708D	Solenoid, TCC, PWM .....	91-ON	1	<b>4L80E.SOL04</b>
NI	Switch, Park/Neutral, Backup (Single Plug 12 Pin) .....	04-ON	1	<b>4L60E.ELE07</b>
NI	Speed Sensor Harness Repair Kit .....	91-ON	1	<b>4L80E.ELE06</b>

# 4L80E (MT-1)

## 4 SPEED RWD (Electronic Control)



AUTOMATIC CHOICE



THE AUTOMATIC TRANSMISSION PARTS WAREHOUSE

ILL NO.	DESCRIPTION	YEARS	QTY	PART NO
<b>VALVE BODY'S &amp; PARTS</b>				
Kit	Junior Shift Kit (TransGo®).....	91-ON	1	<b>4L80E.SK01</b>
Kit	Shift Correction Package (Superior®) .....	93-ON	1	<b>4L80E.SK02</b>
Kit	1-2 & 2-3 Shift Valve Spring Kit (Includes Both Springs) (Sonnax® <a href="#">Click here for Info</a> ) .	91-ON	1	<b>4L80E.SPR05</b>
Kit	Reverse Boost Valve & Sleeve Kit With 'O' Rings (Sonnax).....	91-ON	1	<b>4L80E.VA02</b>
Kit	Reverse Boost Valve & Sleeve Kit With 'O' Rings Self Regulating (Sonnax).....	91-ON	1	<b>4L80E.VA05</b>
Kit	TCC Regulator Valve Kit (Sonnax) .....	91-ON	1	<b>4L80E.VA03</b>
Kit	TCC Regulator Valve & Sleeve Kit (Requires Tool 4L80E.VA12 & Valve Body Fixture AG4.VA05) (Sonnax® <a href="#">Click Here for Info</a> ) .	91-ON	1	<b>4L80E.VA11</b>
Kit	Toolkit for 4L80E.VA11 (Sonnax®).....	91-On	1	<b>4L80E.VA12</b>
Kit	Line Pressure Booster (Sonnax® <a href="#">Click Here for Info</a> ) .	91-ON	1	<b>4L80E.VA14</b>
750D	Plate, Valve Body (Universal) (Transgo) .....	91-ON	1	<b>4L80E.SP01</b>
NI	Manual Valve (Sonnax® <a href="#">Click here for Info</a> ) .	91-ON	1	<b>4L80E.VA13</b>
Kit	End Plug & 'O' Ring, AFL Filter (Sonnax® <a href="#">Click here for Info</a> ) .	91-ON	1	<b>4L80E.VA16</b>
Kit	Accumulator Control Valve Kit (Oversize) (Requires Tool 4L80E.VA15 & Valve Body Fixture AG4.VA05) (Sonnax® <a href="#">Click Here for Info</a> ) .	91-ON	1	<b>4L80E.VA17</b>
Kit	Toolkit for 4L80E.VA17 (Sonnax®).....	91-On	1	<b>4L80E.VA15</b>
NI	TCC & PR Valve End Plugs (Sonnax®).....	91-ON	1	<b>4L80E.VA01</b>
NI	Actuator Feed Limit valve (Sinnax).....	91-ON	1	<b>4L80E.VA04</b>
NI	1-2 & 2-3 Shift Valve Springs (1 of each Sonnax).....	91-ON	1	<b>4L80E.VA09</b>
NI	Pressure Regulator valve (Line-to-Lube Sonnax) .....	91-ON	1	<b>4L80E.VA10</b>
<b>HARD PARTS</b>				
Kit	Front Servo, Piston & Sleeve Kit (Sonnax®).....	91-ON	1	<b>TH400.ACC02</b>
800D	Pump, Both Cooler Lines Behind Bellhousing .....	91-96	1	<b>4L80E.PUM01</b>
800D	Pump, Only One Cooler Line Behind Bellhousing .....	97-ON	1	<b>4L80E.PUM02</b>
801D	Pump Gear Set .....	91-ON	1	<b>4L80E.PUM03</b>
803A	Shaft, Turbine.....	91-ON	1	<b>4L80E.SH01</b>
804A	Overrun Clutch w/ Sun Gear (Uses 4L80E.OWC01) .....	91-E01	1	<b>4L80E.DRU01</b>
804A	Overrun Clutch w/ Sun Gear (Uses 4L80E.OWC03) .....	01-ON	1	<b>4L80E.DRU05</b>
805A	Roller Clutch, Overdrive (.310"OD Rollers, 3 1/4"OD Roller Clutch) .....	91-E01	1	<b>4L80E.OWC01</b>
805A	Roller Clutch, Overdrive (.195"OD Rollers, 3"OD Roller Clutch) .....	E01-ON	1	<b>4L80E.OWC03</b>
806A	Overdrive Planetary (2 Missing Splines) (3.215" Diameter Inside Race)..	91-92	1	<b>4L80E.PL01</b>
806A	Overdrive Planetary (4 Missing Splines) (3.210" Diameter Inside Race)..	93-00	1	<b>4L80E.PL05</b>
Kit	Repair Kit, Overdrive Planetary (Planet/FWD & Overrun Drum) .	93-01	1	<b>4L80E.PLK02</b>

ILL NO.	DESCRIPTION	YEARS	QTY	PART NO
<b>HARD PARTS Cont...</b>				
806aA	Overdrive Planet Kit, (3.025" Diameter Inside Race) (Includes Hardened Planetary & Turbine Shaft, also One Retaining Circlip & Two Sealing Rings).....	01-ON	1	<b>4L80E.PLK01</b>
807A	Drum, 4th Clutch/OD Brake .....	91-ON	1	<b>4L80E.DRU04</b>
808A	Bolt, 4th Clutch Housing to Case.....	91-ON	1	<b>4L80E.NUT01</b>
809B	Forward Clutch Drum w/ Ring Gear (Lip Seal Type Piston).....	91-96	1	<b>4L80E.DRU02</b>
809B	Forward Clutch Drum w/ Ring Gear (MouldedPiston Type).....	97-ON	1	<b>4L80E.DRU06</b>
810B	Clutch Hub, Forward Clutch.....	91-ON	1	<b>TH400.DRU04</b>
810B	Clutch Hub, Forward Clutch (Heavy Duty) (Sonnax® <a href="#">Click here for Info</a> )	91-ON	1	<b>TH400.DRU06</b>
811B	Clutch Hub, Direct Clutch.....	91-ON	1	<b>TH400.DRU05</b>
812B	Direct Clutch Drum (w/o Sprag)	91-ON	1	<b>4L80E.DRU03</b>
813B	Sprag, Intermediate (16 Elements).....	91-ON	1	<b>4L80E.OWC04</b>
813B	Sprag, Intermediate (34 Elements) Heavy Duty .....	91-ON	1	<b>TH400.OWC03</b>
814B	Piston, Direct Clutch (Alluminium).....	91-ON	1	<b>4L80E.PIS04</b>
817C	Center Support, (Uses 24mm Long Bolt) .....	91-96	1	<b>4L80E.SUP01</b>
817C	Center Support, (w/ Lube Hole Passage).....	97-98	1	<b>4L80E.SUP02</b>
817C	Center Support.....	99-ON	1	<b>4L80E.SUP03</b>
818C	Bolt, Center Support to Case (24mm Long).....	91-ON	1	<b>4L80E.NUT02</b>
819C	Shaft, Intermediate Sun Gear (28 Splines on Sun Gear) .....	91-96	1	<b>4L80E.SUN01</b>
820C	Sun Gear, Angled Teeth (28 Splines Inside) .....	97-ON	1	<b>4L80ESUN02</b>
820C	Sun Gear, Straight Teeth (32 Spline Inside).....	91-96	1	<b>TH400.SUN03</b>
821C	Sprag, Low Clutch Roller .....	91-E95	1	<b>TH400.OWC01</b>
821C	Roller Clutch, Low (Rear) (has 8 vertical tabs).....	L95-ON	1	<b>4L80E.OWC02</b>
822C	Front Planetary (Angled Teeth) .	91-98	1	<b>TH400.PL01</b>
822C	Front Planetary (Straight Teeth) .	91-98	1	<b>TH400.PL03</b>
822C	Front Planetary .....	99-On	1	<b>4L80E.PL06</b>
824C	Reluctor Wheel, Speed Sensor (Presses on Rear Planet).....	91-ON	1	<b>4L80E.SEN01</b>
825C	Rear (Angled Teeth) w/ Electric Pick-Up (No Reluctor Ring).....	91-98	1	<b>4L80E.PL02</b>
826C	Ring Gear, Rear Planet (Straight Teeth) .....	91-96	1	<b>4L80E.PL03</b>
826D	Ring Gear, Rear Planet (Angled Teeth) w/ 4 Notches.....	97-ON	1	<b>4L80E.PL04</b>
830D	Front Servo, Piston, Sleeve Spring & Seal Kit (Sonnax) .....	91-ON	1	<b>4L80E.SER01</b>
831D	Piston, Front Servo .....	91-ON	1	<b>TH400.PIS02</b>
833D	Rear Servo Assembly (With Raised Hump on Piston)..	91-ON	1	<b>TH400.PIS04</b>
836D	4th Accumulator Bore, Sleeve & Piston Kit (Sonnax).....	91-ON	1	<b>4L80E.ACC01</b>
NI	Sleeve, Rear Stator Support (Sonnax Replacement) .....	91-ON	1	<b>4L80E.SL02</b>
NI	Case Connector, Cooler.....	91-96	2	<b>4L80E.CON01</b>
NI	Cooler Connector, Snap In (Front) .....	97-ON	1	<b>4L80E.CON02</b>
NI	Cooler Connector, Snap In (Rear).....	97-ON	1	<b>4L80E.CON03</b>

# 4L80E (MT-1)

## 4 SPEED RWD (Electronic Control)



AUTOMATIC CHOICE



THE AUTOMATIC TRANSMISSION PARTS WAREHOUSE

ILL NO.	DESCRIPTION	YEARS	QTY	PART NO
<b>SPECIAL ITEMS</b>				
NI	Case Cooler Line Conversion Kit (this kit allows a centre lube transmission assembly to be insalled into a vehicle with early cooler lines, both case fittings at front).....		1	<b>4L80E.TU01</b>
Kit	Sonnax™ Sure Cure Kit.....	91-ON	1	<b>4L80E.SCK01</b>
<b>TOOLS &amp; MANUALS</b>				
NI	ATSG Rebuild Manual .....	91-ON		<b>4L80E.MAN01</b>
NI	GM Technicians Guide.....	91-ON		<b>4L80E.MAN02</b>
NI	ATSG Diagnostic Manual (4L80E/4L60E).....	91-ON		<b>4L60E.MAN04</b>
<p><a href="#">Click here to view special tools for this transmission</a></p>				

ILL NO.	DESCRIPTION	YEARS	QTY	PART NO
---------	-------------	-------	-----	---------